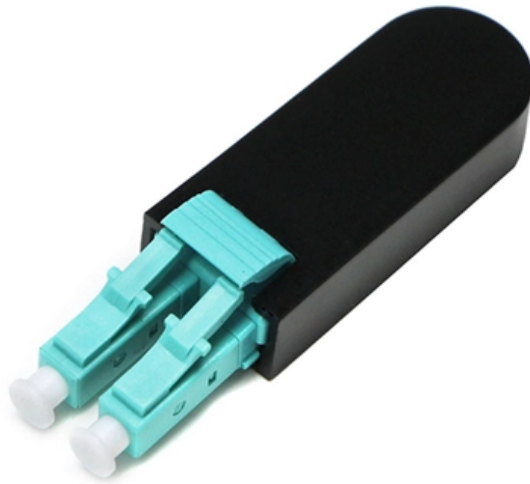




**Adam Tas Corridor Energy**

# **New projects should reserve power distribution boxes**





## Overview

---

Construction projects often require temporary power solutions to operate tools, lighting, and equipment. Temporary power systems are essential for construction projects, yet they often introduce serious safety risks. Loose wiring, exposed connectors, and unstable electrical connections can cause shocks, equipment failures, or costly downtime. It's a safe and reliable electricity supply for tools, lights and facilities for the duration of a construction project. In industrial power distribution systems, cable distribution boxes (also known as power distributor boxes, distribution electrical boxes, or electrical power distribution boxes) are the core hub of power transmission, branching, and protection.



## New projects should reserve power distribution boxes

---



### What construction teams need to think about when planning

If you're planning temporary power for an upcoming project, take a look at our range of power distribution units here on our site. Or if you're looking for something more specific, you can enquire

### How To Maximize Worksite Safety When Using Power Distribution Boxes

Power distribution boxes are designed to be rugged, durable, and dependable in even the most challenging situations and outdoor environments. Safety Standards for Temporary Power



### Understanding Distribution Boxes: Your Guide to Power

Weatherproof Distribution Boxes These serve specific outdoor purposes, with rain, dust, and extreme temperatures sealed shut, protecting any

### Temporary Power Distribution Box in the Real World: 5 Uses

Temporary power distribution boxes are essential tools across various industries. They provide



flexible, reliable electrical power in locations where permanent wiring isn't feasible or necessary.



### **What construction teams need to think about when planning temporary power**

Power distribution units should be built for outdoor construction environments, not adapted from lighter-duty applications. IP rated, rugged enclosures make a difference when units are exposed to weather,

### **The Complete Guide to Distribution Box: Installation, Types & More**

The electrical industry continues to evolve, bringing new technologies that enhance distribution box capabilities and functionality. Smart distribution boxes integrate digital monitoring and



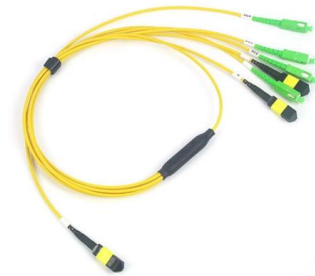
### **Electrical Distribution Equipment in Data Center Environments**

For IT professionals, the terminology can be very confusing - high voltage, medium voltage, low voltage; switchgear, switchboards, panel boards, power distribution units, etc. This paper defines these key



## Distribution box

From a physical point of view, the distribution box should provide sufficient space for existing and future components. It is advisable to plan a reserve of around 20 to 30 percent for the new installation so



## Cable Distribution Box Layout: 10 Industrial Strategies

The layout design needs to consider the future load growth and reserve new electrical power distribution boxes. Or modular expansion space - the Chuanli modular distribution box

## How to Choose a House Distribution Box , CHINT global

A well-chosen distribution box ensures the safety and efficiency of your household electrical system. This article guides you through selecting a



## How To Get Temporary Power for Your Construction

Working on a project in a remote location with no access to electricity? Here are 7 steps you can take to get temporary power for a construction site.



## How to Get Temporary Power for Your Construction Site

Consider the following when setting up temporary power on your site: 1. Evaluate Power Requirements. Think about your project objectives and timeline, and



## Understanding Power Distribution Boxes: Types, Features, and

This guide delves into the intricacies of power distribution boxes, shedding light on their design, functionality, and regulatory standards. Readers can expect to gain a comprehensive





## ELECTRICITY DISTRIBUTION NETWORK PLANNING CRITERIA

The Distribution system should be planned with the primary objective of meeting existing and future load growth efficiently & optimally and maintaining the desired redundancy level in the system to meet



### Temporary Power Distribution Box in the Real World: 5 Uses

Construction projects often require temporary power solutions to operate tools, lighting, and equipment. These boxes enable quick setup and flexible power distribution across large areas .

### Planning of Electric Power Distribution

To this end, we are launching a new series, whereby volume 2 will consist of several individual modules. This newly designed first volume, "Planning of Electric Power Distribution - Technical Principles",



### Cable Distribution Box Layout: 10 Industrial Strategies

Optimize your cable distribution box layout for safety and efficiency. Learn industrial best practices using Chuanli's IEC-standard outdoor and custom boxes.



## The Importance of Distribution Boxes in Electrical Systems

Learn more about how distribution boxes play a critical role in the safe and efficient operation of electrical systems.



## New Construction Temporary Power Systems

If there is limited time available to construct a temporary power system, it may be best to rent or buy portable power equipment such as generators, type-w generator cables, spider-box

## How to Make Temporary Power Safer on Construction

Through a real-world project scenario, we explore how structured connectors, IP67 plug systems, and modular distribution cabinets create safer,



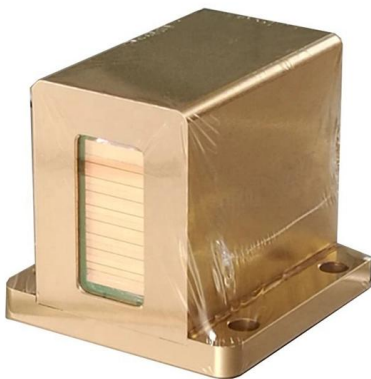


## The installation requirements for the distribution box

A distribution box is the heart of any electrical system. It takes the incoming power and safely distributes it to different circuits throughout your

## The various applications of distribution boxes

The use of distribution boxes can be useful in a variety of industries where power distribution plays an important role. From construction sites to

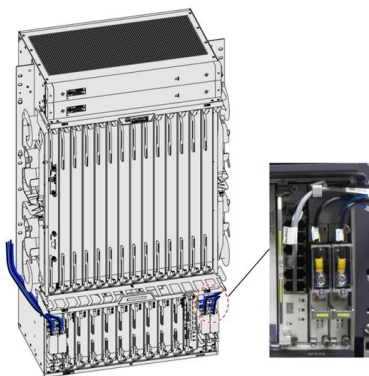
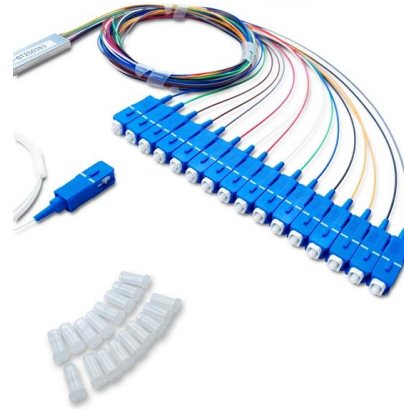


## Temporary Jobsite Power Setup: NEC & OSHA Compliance Guide

Whether you're working on a construction, renovation, or industrial project, reliable temporary power solutions are essential. Not only do they keep work moving quickly and efficiently,

## How to Install a Distribution Box--A Comprehensive

An electrical distribution box, also known as a power distribution box, panelboard, or consumer unit, is the core of an electrical system. It has three



## Why the Right Power Distribution Box is A Building's Real Safekeeper

Discover why a Power Distribution Box is essential for building safety. Learn how to pick the right one and how CEED Electric provides integrated LV switchgear and distribution solutions.

## Contact Us

---

For datasheets, pricing, or custom telecom energy solutions, please visit:  
<https://koskolong.co.za>