



No light penetration after cold-joint assembly



Strengthen door locks

More durable and aesthetically pleasing



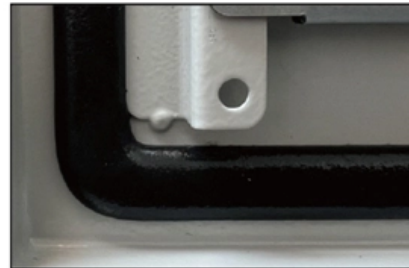
Grounding screw

More aesthetically pleasing and safer



Removable hinges

Make operation more convenient



Sealing strip

Dustproof and waterproof





Overview

Subsequently, use a torch and magnifying glass to check for light penetration through the joints. If light passes through a joint, it indicates poor bonding, requiring rework. These problems can disrupt the reliability of your PCB assembly, leading to circuit failures or costly rework. This guide explains what a cold solder joint is, what it looks like, why it happens, and how to reliably identify, fix, and prevent it. Whether you're troubleshooting a failed board or optimizing an SMT production line, this article gives you a practical, engineering-level reference for eliminating. A cold solder joint forms when the solder does not properly bond the component lead to the pad—typically due to inadequate heat, oxidation, or poor technique.



No light penetration after cold-joint assembly



What is a Cold Solder Joint and How to Fix or Prevent It

Learn what a cold solder joint is, why it's a problem, and how to identify, prevent, and fix it.

How to fix a cold solder joint? Soldering problems

How to fix a cold solder joint? Cold solder joints refer to soldering that is not fully melted due to insufficient temperature or too short a time, resulting in a



Cold Solder: Causes, Problems, and How to Fix It

Cold solder joints are a major cause of electronics failure. Learn what cold solder is, its causes and effects, and how to fix and prevent cold soldering issues to ensure

Cold Solder Joints - Identification, Effects, and Prevention

Learn what cold solder joints are, their causes, effects on PCB, and effective methods for



identification, prevention, and repair.



Cold Solder Joint Guide: How to Identify, Fix, and Prevent

Learn what a cold solder joint is, what it looks like, and its causes. Expert engineering guide on how to fix and prevent these defects in PCB assembly.

What is a Cold Solder Joint and How to Fix or Prevent It

A cold solder joint forms when solder fails to melt completely (preventing proper joint formation); it has a rough, rigid, uneven surface, and is prone to cracking, failure, and increased



What Is a Cold Solder Joint and How Do You Prevent It?

A cold solder joint or cold joint solder, is a defective connection between a component lead or terminal and a PCB pad during PCB assembly



Troubleshooting Solder Joint Problems in SMT Assembly

Learn to troubleshoot SMT solder joint issues like bridging, insufficient solder, and cold joints with practical solutions from ALLPCB.



Avoiding The Dreaded Cold Solder Joint

Avoiding The Dreaded Cold Solder Joint Good solder joint formation is a prerequisite in electronics manufacturing. The failure of one small solder joint can compromise

What is Cold Joint Concrete , Effects, Tips to Avoid and

What is cold joint Concrete and what are its effects. Learn more about how to avoid cold joints in concrete and repair tips.



The Critical Threat of Cold Joints in Concrete Columns: Ensuring

This strategic penetration is paramount, as it achieves two critical objectives: (1) it ensures the complete consolidation of the new concrete, removing entrapped air, and (2) it re-agitates the



PCB Cold Solder Joints

Cold solder joints are one of the most common and troublesome defects in Printed Circuit Board (PCB) assembly. These imperfect solder



How to Repair a Cold Joint in Concrete? (Effectively!)

If you have ever experienced concrete pour delays in any of your projects, you have likely faced issues associated with concrete cold joints. Cold joints typically occur



Cold Solder Joint: How to Identify, Fix & Prevent Defects

What does a cold solder joint look like and why does it cause failures? Learn to spot symptoms like dull surfaces and cracks, find root causes in your SMT process, and apply proven fixes.





Cold Solder Joint

Learn what is Cold Solder Joint - Symptoms, Prevent, Repair and Fix Cold Solder Joint. Everything You Should Know about Cold Solder Joints.

Cold Solder Joints: Causes, Detection & Prevention Guide

A cold solder joint occurs when solder doesn't properly melt or bond, creating a weak electrical/mechanical connection --



How to Identify and Repair Cold Solder Joints

Learn everything about cold solder joints - what causes them, how to identify dull grainy solder connections, their effects on circuits, and step-by-step repair

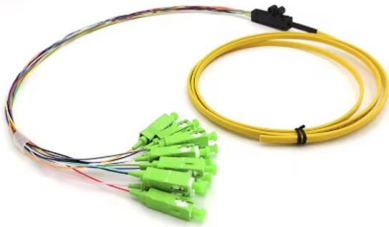
Solder Joint Defects: A Visual Inspection Guide for Electronics Hobbyists

Learn exact signs of bad joints, precise locations of solderability issues, and easy fixes tailored for electronics hobbyists. Spot problems fast and build reliable circuits every time.



Dry Solder Joints: How to Identify and Fix Them?

Learn everything you need to know about dry solder joints, including how to identify them, their causes, effects, and how to repair them. Understand



Troubleshooting Cold Solder Joints: A Practical Guide

Learn to troubleshoot cold solder joints with this practical guide. Tips on repair, identification, prevention, and optimal soldering temperature.



Understanding Cold joints solder: Causes, Consequences, and Solutions

The document titled "Understanding Cold Solder Joints: This work, "Causes, Consequences, and Solutions", gives an insight into the





Cold Solder Joints: How to Identify, Fix, and Prevent the #1 Hidden

Discover what cold solder joints are, how to detect them, and proven methods to fix and prevent failures. This complete guide



Understanding Cold Joints in PCB Soldering: Causes

Dive into the intricacies of cold joints in PCB soldering, exploring the causes, impacts, and effective remedies for ensuring robust electrical connections and

What is a Cold Joint Solder and How Can You Prevent it?

Too low process temperature of solder joints can result in incomplete wetting. You can detect a cold solder joint using magnifying glass or through visual checking.



The Ultimate Guide to Preventing Cold Solder Joints:

Learn how to prevent cold solder joints with our ultimate guide. Master temperature, techniques, and tools for reliable PCB connections.



How to Fix a Cold Solder Joint: The Ultimate Guide

To help you avoid cold solder joint in your electronics manufacturing process, we've put together this guide that covers all the details.



Concrete cold joint formation in hot weather conditions

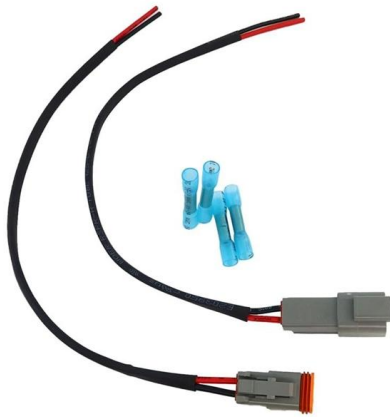
Cold joint formation becomes more likely in hot weather conditions due to the rapid setting behaviour of the concrete. The objective of this study was to examine the effect of the



Cold Solder Joints: Causes, Detection and Prevention

Learn what causes cold solder joints, how to detect them via visual/X-ray inspection, and proven prevention methods. Includes BGA/CSP solutions and





Red Dye Penetration Test to check for BGA solder joint

Evidence of poor soldering, such as cracks, cold solder, and voids, should be noticeable as traces of red dye penetrating the fracture surfaces of the

How to Test Solder Joints After PCB Assembly

This method can quickly identify open circuits caused by cold solder joints, insufficient solder, or component placement issues.



Contact Us

For datasheets, pricing, or custom telecom energy solutions, please visit:
<https://koskolong.co.za>