



**Adam Tas Corridor Energy**

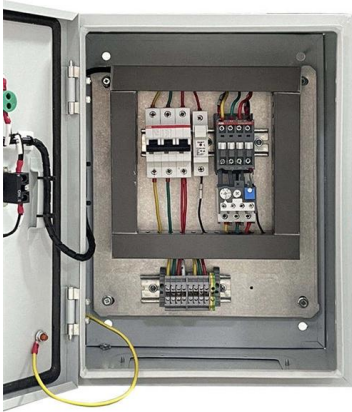
# **Nordic ODM Single-Fiber Bidirectional QSFP-DD**





## Nordic ODM Single-Fiber Bidirectional QSFP-DD

---



### QSFP-40G-SR-BD (Single-Fiber-Bidirectional Module)

This document provides an overall description of the CE5800& 6800& 7800& 8800 series switches hardware that versions earlier than V200R020C00, helping you obtain detailed information about

### Connectors and Cages

QSFP-DD plug is the same height and width as the 4-channel QSFP56 and QSFP28 used for 200G and 100G systems, but longer to support two rows of 4-channel electrical pins



### Cisco QSFP-100G-B20U4-I and QSFP-100G-B20D4-I

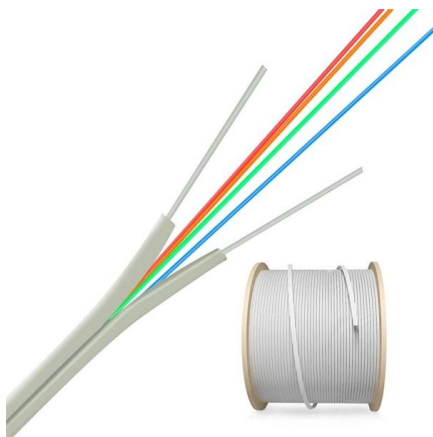
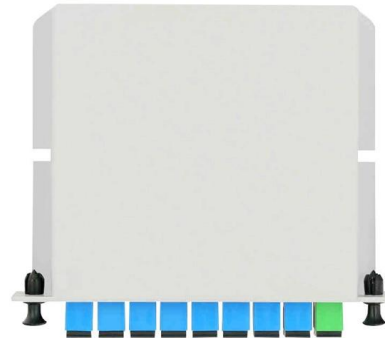
Bidirectional 100Gb on a single fiber Whether it's building a network or upgrading an existing network, the Cisco ® QSFP-100G-B20U4-I and QSFP

### Comprehensive Guide to QSFP - MapYourTech

QSFP-DD doubles the electrical interface to 8 lanes while maintaining backward compatibility



with QSFP28 modules (using 4 of the 8 lanes).  
This



### What is QSFP & QSFP+ Transceiver: An Ultimate Guide

What is a QSFP & QSFP+ Transceiver? QSFP stands for Quad Small Form-factor Pluggable. By integrating four-lane signals into a single module, it

### Dual to Single Fiber Solutions , RAD BiDi QSFP28 DD Adaptor

Simple to deploy, this compact adaptor doubles fiber capacity while avoiding costly new fiber/transceiver deployments and frees up fiber for other services. 50% fiber savings with quick ROI. Any bit rate up:



### 100G QSFP28 BiDi : Optical Transceiver Module , NEC

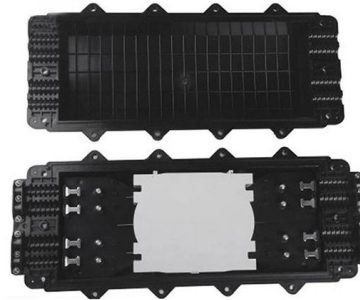
100G QSFP28 LR1 BiDi/ER1 BiDi /ZR4 BiDi NEC's 100G QSFP28 BiDi optical transceiver enables the transmission and reception of 100Gb/s high-speed data





## 100G QSFP28 / SFP-DD Modules and Cables FAQ , FS

The 100G BiDi transceiver refers to the QSFP28 single-mode fiber bidirectional optical module applied to 100G Ethernet. Each optical port on the QSFP28 BiDi contains both a transmitter and receiver,



## Specifications of the Fiber Gigabit Ethernet SFP, XFP, SFP+, QSFP+

Topic The following specifications are for the available Fiber Gigabit Ethernet modules and the platforms that support those modules. Important: The end user must ensure suitability of

## What is BiDi Transceiver: A Beginner's Guide

What is a BiDi Transceiver? BiDi transceiver, or Bidirectional or simplex optical transceiver, is an optical module that uses Wavelength Division



## 40G QSFP+

Eoptolink QSFP+ (Quad Small Form-factor Pluggable Plus) designed for SR4, LR4 and ER4 applications 40G CWDM QSFP+ Eoptolink's CWDM QSFP 40G uses



## Cisco QSFP-DD Pluggable Open Line System (QDD)

Learn more about the Cisco QSFP-DD Open Line System (QDD OLS), a pluggable optical amplifier module that provides a simple yet powerful open line



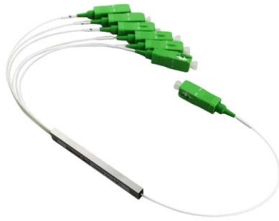
## OEM 100G QSFP28 & 200G QSFP56, QSFP-DD, CFP2

Direct OEM/ODM manufacturer of 100G/200G transceivers for AI clusters & hyperscale cloud. 100% tested 100G QSFP28, 200G QSFP56, QSFP-DD & CFP2 solutions.

## QSFP Cables Explained 2025: Types, DAC vs AOC, and DC Use Cases

But QSFP is not a single thing, there are multiple generations (QSFP+, QSFP28, QSFP56, QSFP-DD), different physical media (copper vs fiber), and multiple deployment options (DAC vs AOC). Picking





## Dual to Single Fiber Solutions , RAD BiDi QSFP28 DD Adaptor

BiDi QSFP28 DD Adaptor The RAD patented BiDi miniature passive adaptor fits any QSFP/SFP transceiver to perform a simple dual to single bi-directional fiber connectivity. Simple to deploy, this

## Cisco 400G QSFP-DD Cable and Transceiver Modules

The Cisco® family of QSFP-DD modules provide the industry's highest bandwidth density while leveraging the backward compatibility to lower-speed



## Optical Transceiver Buying Guide: SFP/QSFP Explained for

Understanding Fiber Compatibility: Single-Mode vs Multimode The choice between single-mode fiber (SMF) and multimode fiber (MMF) directly impacts the optical transceiver type: Multimode

## 100G QSFP28 / SFP-DD Modules and Cables FAQ , FS

Each optical port on the QSFP28 BiDi contains both a transmitter and receiver, transmitting and receiving data to/from interconnected network devices (like network switches or routers) at full-duplex



### QSFP-DD

QSFP-DD is a new module and cage/connector system similar to current QSFP, but with an additional row of contacts providing for an eight lane electrical interface.



### BiDi Transceivers For Beyond 100G Fiber Infrastructure

RAD has developed the patented BiDi QSP adaptor to solve the issue of making the transition from dual-fiber optical transceivers to single-fiber easy.



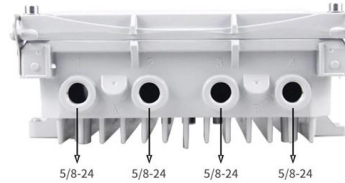
### QSFP-DD (Double Density) Interconnect System and Cable

QSFP-DD Interconnect System's 8-lane electrical interface transmits up to 28 Gbps NRZ or 56 Gbps PAM-4, up to 200 or 400 Gbps aggregate, with the same footprint as QSFP Interconnects, making



## Understanding the QSFP Cable: A Comprehensive

View qsfp cable - FiberMall for More Details How Does QSFP Work in Network Infrastructure? The QSFP technology functions by employing multiple data lanes



## SFP+, SFP28, QSFP+, QSFP28, QSFP56, QSFP-DD,

Initial Published: February 19, 2022 The optical transceiver plays a crucial role in modern fiber networking. Various high-speed transceiver types are

## Cisco QSFP-DD Pluggable Open Line System (QDD)

The ability to extend the reach and capacity of a single fiber span in



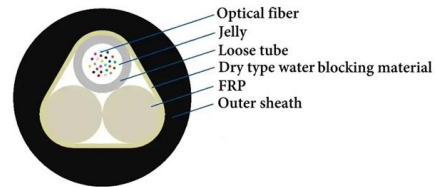
## Differences Between QSFP-DD and QSFP+ / QSFP28 /

QSFP-DD ports incorporate a riding heatsink, which can be sized independently of the optical module and is positioned on top of or between



## The Ultimate Guide to QSFP Cable: Everything You

Discover everything you need to know about QSFP cables with Fibermall's expert insights!



## Contact Us

---

For datasheets, pricing, or custom telecom energy solutions, please visit:  
<https://koskolong.co.za>