



Adam Tas Corridor Energy

Normal attenuation of the beam splitter





Normal attenuation of the beam splitter



Beam Splitter Tutorial

A beam splitter is an optical device that divides an incoming light beam into two separate beams. One beam is typically reflected while the other is transmitted. The ratio of reflected to transmitted light can

Polarization beam splitter based on a double-groove

To the best of our knowledge, this is the first report of a one-dimensional polarization beam splitter grating with a transmissive double-groove



Beam Splitters - optical power splitter, beamsplitter, thin

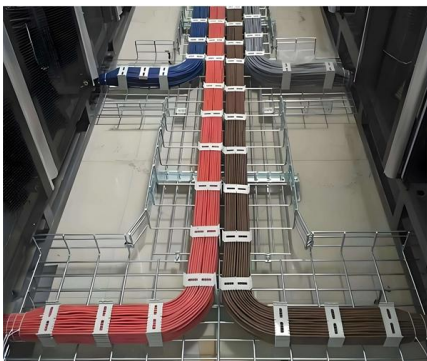
While most beam splitters have a fixed splitting ratio, variable beam splitters allow for the continuous adjustment of the ratio between reflected and transmitted power.

How Does a Beam Splitter Work?

Discover how beam splitters precisely divide light, exploring their fundamental optical principles, diverse designs, crucial performance



aspects, and wide-ranging real-world applications.

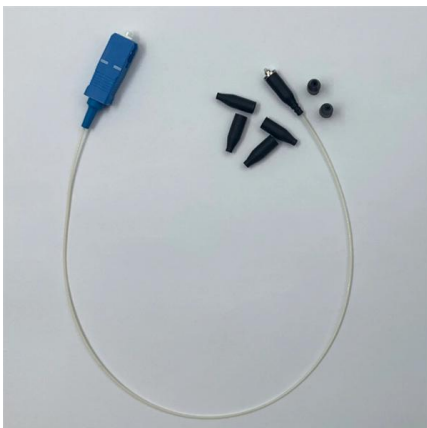


How beam splitters affect signal attenuation and polarization

In the context of beam splitters, attenuation can occur due to several factors, including absorption, reflection, and scattering. When a beam splitter divides the incoming light, some of the

Beamsplitters

Beam Splitter Gratings Multiple beamsplitters, also known as array illuminators, are gratings with sophisticated periodic structure that are capable of transforming an incident plane wave into a set of



Beam splitter

To reduce loss of light due to absorption by the reflective coating, so-called "Swiss-cheese" beam-splitter mirrors have been used. Originally, these were sheets of



Beam Splitting

Beam splitting is defined as the process of dividing an incident light beam into two or more separate beams, which can be achieved through various structures, including metasurfaces that utilize phase



Fundamental properties of beamsplitters in classical and

A lossless beam-splitter has certain (complex-valued) probability amplitudes for sending an incoming photon in to one of two possible directions.

What are Beamsplitters?

When p-polarized light hits the reflecting surface, the field has components both in the surface plane and normal to the surface. The reflectivity of the two



How to Calculate Splitter Loss in Optical Fiber

Besides splitter loss, other factors contribute to overall network loss, such as fiber attenuation and losses due to connectors and splices. Each component's performance, such as the



Quantum optics of lossy beam splitters

Beam splitters play important roles in much of optical physics. They are key elements in interferometers, both the classical instruments whose fringes are controlled by first-order coherence and the



Chapter 19 Beam Splitter

We will study the quantum mechanical analysis of how the beam splitter behaves under different input conditions such as pairs of photons incident on the two input arms which leads to two photon

Fundamental properties of beamsplitters in classical and

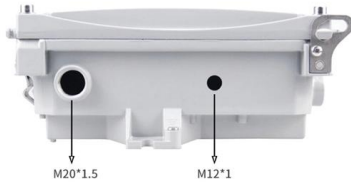
We use elementary laws of classical and quantum optics to obtain general relations among the magnitudes and phases of these probability amplitudes.





Single-mode optical fiber

Connecting couplers, splitters, and wavelength-division multiplexers (WDMs) to optical fibers
Connecting optical test equipment to fibers for testing and



Beam Splitter Input-Output Relations

The elements of the beam splitter transformation matrix B are determined using the assumption that the beamsplitter is lossless. While a beamsplitter is never lossless, it is a good approximation for most



Parameters of Beam Splitter

Article introduces the meaning of the basic parameters of beam splitter. Beam splitter at specific angles, creating arrayed beams, spot size on

Polarizing Beamsplitter

Sénarmont polarizing beam splitters are similar, but the polarizations of the deviated and undeviated beams are interchanged. Wollaston polarizers (Fig. 7b) deviate both output eigenpolarizations with



How Beamsplitters Work: Types, Mechanisms, and

This article explains the working principles of beamsplitters, detailing how they divide a beam of light into two separate paths, the different types of

The Buyer's Guide to Beam Splitters , Blue Ridge Optics

Matching the beam splitter's specifications to the characteristics of the light source ensures optimal performance. This minimizes light losses and aberrations while maintaining the



Lecture9: The lossless beamsplitter Lec

on non-absorbing beam splitters. If we neglect the three-dimensional character of the electromagnetic fields and focus on one-dimensional propagation only, we can regard a beam splitter simply as a



Diffraction Pattern Calculation from a Reflection-Type Diffractive Beam

Most diffractive beam splitter is designed with the normal incidence assumption. More specifically, the structure design from transmission function, which is achieved by using Iterative Fourier Transform



What kind of interference occurs in Beam splitter?

What kind of interference occurs in Beam splitter? Beam splitter (in Michelson Interferometer) divides radiations in two parts (half transmitted and half reflected). I want to know how this happens.

Fundamental properties of beamsplitters in classical and quantum optics

analyzing the behavior of a beam-splitter that culminated in Eq. (17). While detector arrays capable of localizing individual photons in space and time are commercially available nowadays, it is



Transmission and Reflection by Beamsplitters

Transmission and Reflection by Beamsplitters - Java Tutorial A beamsplitter is a common optical component that partially transmits and partially reflects an



Beam Splitter

A beam splitter is defined as an optical device that effects a linear transformation of fields presented at two input ports, producing output beams that are related to the input fields in a characteristic manner



Beamsplitters: A Guide for Designers , Optics

Nonpolarizing plate beamsplitters Nonpolarizing plate beamsplitters have been designed for use in situations in which the polarization characteristics of the

7.36: Bosonic and Fermionic Photon Behavior at Beam Splitters

However, recombining the photon beams at a second beam splitter appears to invest them with fermionic character. As is shown below, the addition of a second beam splitter is easily





Beam splitter , Description, Example & Application

A beam splitter is an optical device that splits a single beam of light into two or more beams. It is commonly used in scientific and industrial applications.

Contact Us

For datasheets, pricing, or custom telecom energy solutions, please visit:
<https://koskolong.co.za>