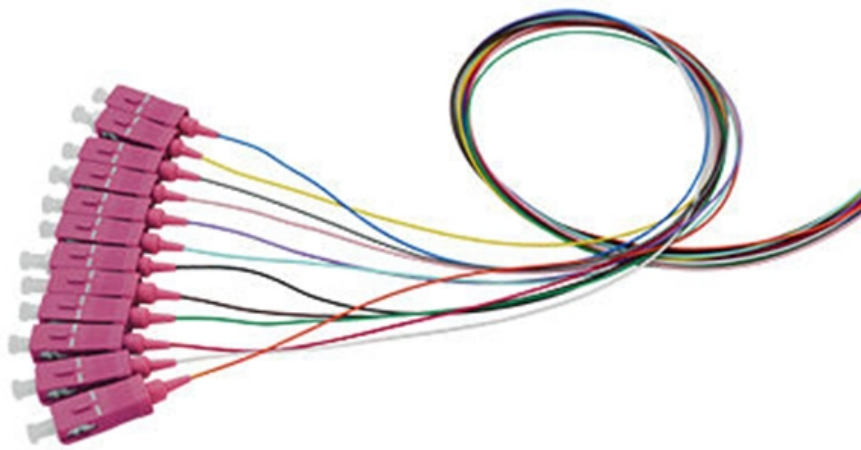




Adam Tas Corridor Energy

Normal optical power of the beam splitter





Overview

To reduce loss of light due to absorption by the reflective coating, so-called "Swiss-cheese" beam-splitter mirrors have been used. OverviewA beam splitter or beamsplitter is an that splits a beam of into a transmitted and a reflected beam. It is a crucial part of many optical experimental and measurement systems, such as In its most common form, a cube, a beam splitter is made from two triangular glass which are glued together at their base using polyester,, or urethane-based adhesives.



Normal optical power of the beam splitter



Optical Beam Splitters

Beam splitters usually play a vital role in laser-based optical systems, so predictable and accurate performance is an absolute must. In both standard and custom models, Keysight beam split

How Does a Beam Splitter Work in Optical Applications?

A beam splitter divides a light beam into two or more paths, crucial for optical devices like microscopes and interferometers.



Understanding Beamsplitters: Types, Principles, and

A cube beam splitter has a considerable advantage over a plate beam splitter because the former does not generate ghost images. Furthermore, users

Optical Splitters in Modern Networks

Fiber optic splitters, also referred to as optical splitters, fiber splitters, or beam splitters, are



integrated waveguide optical power distribution devices that



How does a beam splitter work? Common types and use cases

Understanding Beam Splitters Beam splitters are essential optical components used to divide a beam of light into two or more separate beams. They play a crucial role in various scientific,

Beam Splitter

A conventional beam splitter is an optical component used to divide an incident beam into two or more beams by refracting or reflecting it. In contrast, artificial nanostructures of metasurfaces provide



Understanding Beamsplitters: A Comprehensive Guide

Beamsplitters play a critical role in a variety of optical applications, splitting or combining beams. They are used in microscopy, laser systems, and



Fundamental properties of beamsplitters in classical and

We use elementary laws of classical and quantum optics to obtain general relations among the magnitudes and phases of these probability amplitudes.



What are Beamsplitters?

Beamsplitters are generally effective at reflecting s-polarization but they are not as effective at preventing p-polarization from reflecting. This occurs because when s

What Is a Beam Splitter and How Does It Work?

Pellicle Beam Splitter The Pellicle Beam Splitter uses an extremely thin membrane of optical film stretched over a frame. Because the film is only a few micrometers thick, this design



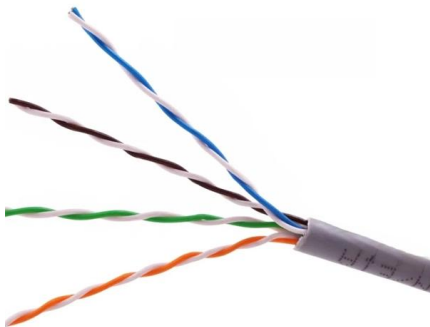
How Beamsplitters Work: Types, Mechanisms, and

It operates by splitting incoming light into one or two beams, with one or more beams passing through the optical element and one or more beams being



Optics & optical coatings

Optics & optical coatings Guide Beamsplitters selection Guide A beamsplitter is an optic that splits light into 2 directions. The split ratio of light transmittance and reflectance is 1:1 and is called a half mirror.



Covering the Basics of Beamsplitters -- Firebird Optics

Beamsplitters are usually made as a reflective device that splits the beam into exactly 50/50 with half of the beam being transmitted and the other half

Optical Splitters Demystified: The Silent Heroes

An Optical Splitter, also known as a beam splitter, is a passive optical device that divides a single input optical signal into two or more output signals.





How much useful light is lost due to the use of a beam splitter



The smaller the losses the more difficult is the splitter characterization, so the specifications of the commercial or custom filter must be carefully

Polarizing Beamsplitter

The plane of incidence contains both the incoming light beam (incident beam) and the reflected light beam. The angles for both the incident and reflected light beams are measured relative to an axis



Beam Splitter , Precision, Applications & Design Principles

Understanding Beam Splitters: Precision, Applications, and Design Principles Beam splitters are integral optical components that divide a beam of

How Does a Beam Splitter Work?

Optical coatings, often made of dielectric materials or thin layers of metal, are designed to achieve a desired balance, allowing a specific percentage of light to be reflected and the rest to be transmitted.



Beam Splitters - optical power splitter, beamsplitter, thin-film



Generally, cube beam splitters cannot tolerate a high optical powers as plate beam splitters, although optically contacted cubes can also exhibit substantial power handling capabilities.

What Is an Optical Splitter?

Fiber optic splitter, also referred to as optical splitter, fiber splitter or beam splitter, is an integrated waveguide optical power distribution device that



What is a Beam Splitter?

A beam splitter or power splitter is an optical device that can split an incident light beam e.g. a laser beam into two or sometimes more beams, which may or may not have the same optical



What Are Optical Beam Splitters?

What Are Optical Beam Splitters? Key Takeaways
Beam splitters, essential for applications such as teleprompters and holograms, have different types that play



Mastering Polarizing Beam Splitters

Unlock the potential of polarizing beam splitters in optical design with our in-depth guide, covering principles, applications, and best practices.

What are Beamsplitters?

Optical components that create two beams by splitting incident light are beamsplitters. Read more about the different types of beamsplitters at Edmund



Chapter 19 Beam Splitter

Output states from beam splitters under different inputs such as single photons entering through one port, two photons entering through the two input ports, single photon in a multimode state, and



Understanding Fiber Optic Splitters: Principles,

The splitting ratio refers to the ratio of the power of the output light beams to the power of the input light beam. Insertion loss is the loss of signal power resulting



Beam splitter , Description, Example & Application

A beam splitter is an optical device that splits a single beam of light into two or more beams. It is commonly used in scientific and industrial applications.

Contact Us

For datasheets, pricing, or custom telecom energy solutions, please visit:
<https://koskolong.co.za>