



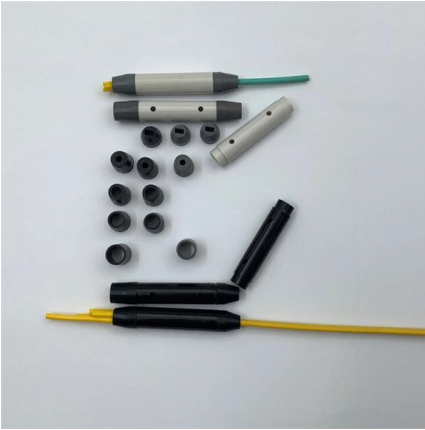
Adam Tas Corridor Energy

ODF patch panel sample





ODF patch panel sample

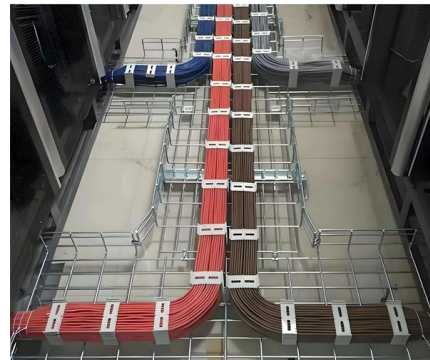


Comprehensive Comparison: Fiber Patch Panel vs ODF

In the intricate and rapidly evolving landscape of fiber optic infrastructure, two components frequently appear in network design discussions:

Fiber Patch Panel (ODF) and High-Density MPO

Explore the structure, functions, and technical advantages of fiber patch panels (ODF) and high-density MPO distribution systems. Learn how



Optical Distribution Frame VS Patch Panel

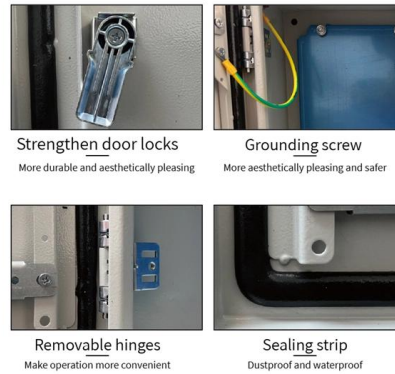
When we talk about Optical Distribution Frame VS Patch Panel, It seems they are quite different. Learn more about the differences from ODF vs patch panel now.

Optical Distribution Frames/Patch Panel

An optical Distribution Frame (ODF) or patch panel is the starting point for optical cables,



most commonly found in rack cabinets in Head End (HE)/Central Office (CO)/Point of Presence



Optical Distribution Frame (ODF): The Complete Guide for Fiber

Q1: What is the difference between an ODF and a patch panel? An ODF is the entire frame or cabinet managing fiber connections, while a patch panel is a modular unit inside the ODF



Optical Distribution Frame (ODF): The Complete Guide for Fiber

Comprehensive guide to Optical Distribution Frames (ODF) for data centers. Learn ODF types, installation best practices, fiber management, patch panels, MPO/MTP solutions, and high



ODF Module , High Quality ODF Module , Patch Panel

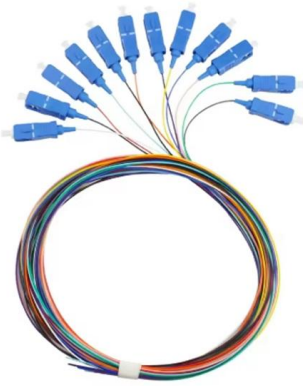
ODF (Optical Distribution Frame) rack mount patch panel ODU-L21 ultimate new design with the most advanced splice & patch system and cable management





Comprehensive Comparison: Fiber Patch Panel vs ODF

This extended definitive guide examines every facet of the Fiber Patch Panel vs ODF comparison.



Fiber Optic Patch Panel & ODF , 1U/2U/4U Rack & Wall Mount

View our full range of Fiber Optic Patch Panels to browse available configurations, including Rack Mount, Wall Mount, and High-Density ODF solutions.

Fiber Optic Patch Panel Manufacturer , Rack & ODF Panels

Fiber Optic Patch Panels Manufacturer for FTTH & Telecom Networks Fiber optic patch panels are used to terminate, manage, and distribute optical fibers in telecom and FTTH networks. Available in rack



ODF vs Patch Panel

This comparison focuses on architectural and deployment-level differences between ODFs and patch panels. Vendor-specific products, pricing, and commercial evaluation are intentionally out of scope.



Fiber Patch Panel vs ODF : What's the Differences

When setting up a fiber optic network, two critical pieces of equipment come into consideration: the fiber patch panel and the optical distribution frame



Fiber Patch Panel vs ODF (2026 Guide) - Differences

Learn differences between fiber patch panels and ODF. Covers topology placement, splicing, MPO/MTP, OS2/OM4, density, best practices, and

ODF

For example, patch cords may have PON port labels or more detailed labels can be used, including geographical locations of the first splitter and exact locations on the ODF and OLT, which include:





Optical distribution frames and patch panels

Supporting more fiber with lower cost and higher flexibility, Technetix offers a variety of wall, floor and rack-mounted optical distribution frames (ODF) and patch panels.



What is Optical Distribution Frame ODF?

What is ODF? ODF, also known as optical distribution frame or fiber optic patch panel, is a critical device used in optical communication for managing



Installation of ODF ,, Optical Fiber patch panel ,, Eman

From the initial setup of the ODF to connecting and managing fiber cables within the patch panel, we ensure a seamless process that minimizes downtime and

Fiber Patch Panel vs ODF - Main Differences

? Compare fiber patch panels and ODFs in terms of design, function, and applications to choose the right solution for fiber optic networks.



Fiber Patch Panel vs ODF : What's the Differences

Fiber Patch Panel vs ODF: both serve similar purposes in managing and organizing fiber connections, but also some differences to consider.



CRX Fiber Patch Panel (ODF) Guide , Network Protection

Fiber Patch Panel (ODF) Solutions for Secure Fiber Optic Networks Comprehensive guide to fiber patch panel protection, components, and high-density configurations for telecommunications infrastructure



Datasheet Fiber Optic Patch Panels UHD ORMP 1U and UHD ORMP 2U

The Fiber Optic Patch Panels UHD ORMP 1U and UHD ORMP 2U are pre-assembled according to customers' exact specifications to begin splicing right out of the carton, so the panels provide





ADTEK Science , The difference between fiber optic

Fiber Optic Patch Panel enables rapid deployment of high-density interconnections and cross-connections in data centers, simplifying cabling



Fiber Distribution Products and Data Cabinets , Micos Telcom

Fiber Distribution Products and Data Cabinets , Micos Telcom

ODF vs. Fiber Patch Panel: Key Differences Explained

Discover the key differences between ODF and fiber patch panels to build efficient, scalable, and well-managed fiber optic networks.



How to Choose the Optical Fiber Patch Panel/ODF

Optical Fiber Patch Panel or Optical fiber distribution frame (ODF), as an important cable management equipment, is widely used in data centers to



Understanding the Difference Between ODF and Patch

Understanding the distinctions between ODF and patch panel is vital to making informed decisions about your network infrastructure.



How to Arrange Fiber Optic Patch Panel in Data Center

In modern data centers, where high-speed and high-density connectivity is critical, organizing fiber optic patch panels effectively is essential



Contact Us

For datasheets, pricing, or custom telecom energy solutions, please visit:
<https://koskolong.co.za>