



Adam Tas Corridor Energy

Office AI Server





Overview

This is an MCP (Model Context Protocol) server that runs in Docker and gives AI assistants (like Claude, Cursor, or any MCP-compatible client) the ability to generate real Office files on demand. [GitHub - iOfficeAI/OfficeCLI: OfficeCLI is the first and best Office suite purpose-built for AI agents to read, edit, and automate Word, Excel, and PowerPoint files.](#) MCP-office is an AI server designed to automate tasks within Microsoft Office applications, enhancing productivity and efficiency.



Office AI Server

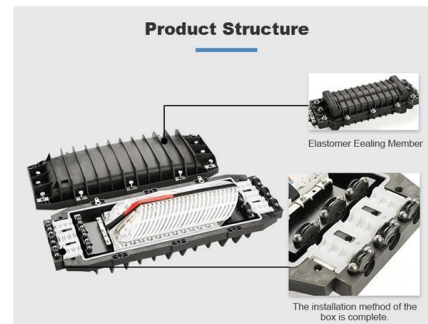


Perform Office Online Server Update via Windows Updates

Learn how to update Office Online Server via Windows Updates instead of downloading updates from the Microsoft Update catalog

GitHub

This copies the binary to your PATH and installs the officecli skill into every AI coding agent it detects -- Claude Code, Cursor, Windsurf, GitHub Copilot, and more. Your agent can



Microsoft

Service Level Agreements (SLA) for Online Services. The Service Level Agreements (SLA) describe Microsoft's commitments for uptime and connectivity for Microsoft Online Services

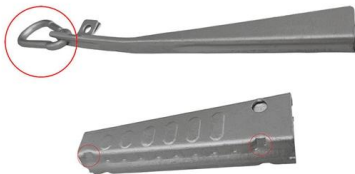
Using the Microsoft 365 Connector for Claude

The Microsoft 365 Connector for Claude allows Claude to access SharePoint and OneDrive files, emails, and Teams chats and meetings.



Local AI Engine , OfficeAIAssistant

When having your own APIKey, you can communicate with AI vendors online on your own machine. Currently, supports using your own KEY from the following list:



GitHub

The MCP server for AI like to automate Microsoft office applications like Word, Excel, Outlook, PowerPoint, Access, OneNote, Publisher, Visio, Project and also WPS .



List of Microsoft 365 applications and services

List of Microsoft 365 applications and services
Microsoft 365 is a family of productivity software, collaboration and cloud-based services, encompassing online services, products formerly marketed





April 2026 updates for Microsoft Office

Microsoft released the following security and nonsecurity updates for Office in April 2026. These updates are intended to help our customers keep their computers up to date.



mcp-office MCP Server

To use mcp-office, integrate it with your Microsoft Office applications and configure it to perform specific automation tasks such as document generation, data entry, and report creation.

Microsoft is killing off Office Online Server

Microsoft has decided to retire a version of Office Online in an effort to focus on cloud-first solutions like Microsoft 365.



List of Microsoft 365 applications and services

Microsoft 365 is a family of productivity software, collaboration and cloud-based services, encompassing online services, products formerly marketed under Microsoft Office, and enterprise products and



GitHub

OfficeMCP server is designed for AI to automate Microsoft Office Applications (Word, Excel, PowerPoint, Access, OneNote, Visio, Project, WPS.word, Wps.powerpoint,



Microsoft 365 Plan Updates for 2026: New Features and

Get the key takeaways from Microsoft's recently announced news detailing new 2026 features across Microsoft 365 plans, including AI, security,

MCP Office Documents Server

An MCP protocol service that enables AI assistants to generate professional Office documents (PowerPoint, Word, Excel, emails, and XML) with a single prompt. This MCP Server has been





Windows Server end of support and Microsoft 365 Apps

For more information on support after October 2025, see Office and Windows configuration support matrix. For end of support dates for Windows Server 2019, see the Windows

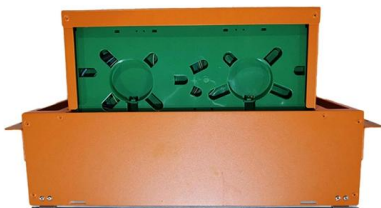
How to Find the SMTP Server in Outlook 365: A Full Guide

If you're having trouble sending emails, you may need to update your SMTP server settings, which are the settings for the outgoing mail servers. Whether you need to find the name of the SMTP server to enter into Outlook or want to use Outlook's SMTP server in a different email app, this wikiHow guide



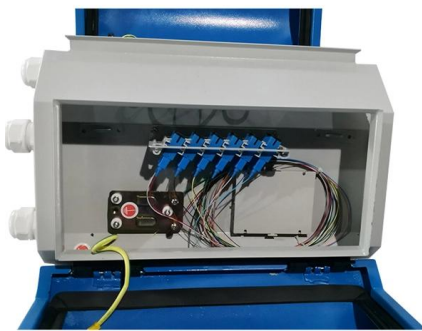
Build Smarter with the Microsoft 365 Agents Toolkit

Whether you're building Copilot agents, extending Teams apps with AI, or experimenting with new AI-first workflows, the Microsoft 365 Agents Toolkit



Microsoft Office Volume Activation Using KMS Server

A KMS server allows corporate clients to activate Microsoft Office on their networked computers without requiring an Internet connection to Microsoft's



Office MCP Server by OfficeMCP , AI Toolhouse

Empower artificial intelligence to streamline various Microsoft Office tasks on Windows using COM interfaces. This protocol facilitates program initiation, document editing, screen capturing,

Office Suite: AI-Powered Automation for Word, Excel, PowerPoint

This server seamlessly integrates with popular AI clients like Claude and Cursor, making advanced office automation accessible and efficient.



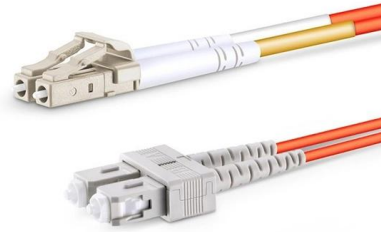
Claude now available in Microsoft Foundry and Microsoft

This enables companies to build with Claude, the world's best models for coding, agents, and office tasks, all while using their existing Microsoft



Activating Office 2019 Retail/KMS

In this example we are using Office 2019 Professional Plus in the retails channel and we need to adapt it to run the KMS version which is activated by a enterprise KMS server. Start



Office -- MCP server , explainx.ai

Office is a community-built MCP server published by officemcp that provides AI assistants with tools and capabilities via the Model Context Protocol. Automate Microsoft Office apps like Word and Excel on

Contact Us

For datasheets, pricing, or custom telecom energy solutions, please visit:
<https://koskolong.co.za>