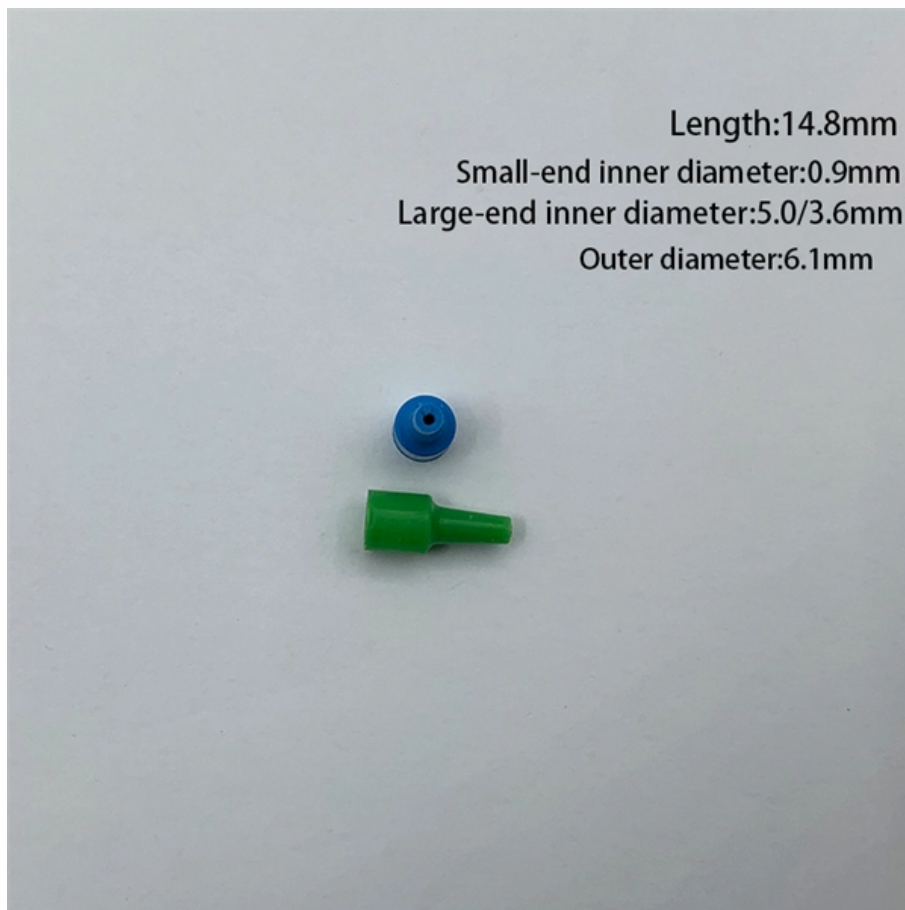




**Adam Tas Corridor Energy**

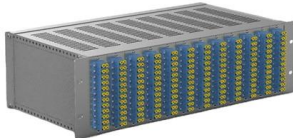
# **Optical Module Gigabit SFP Single-mode Dual-fiber 1310nm**





## Optical Module Gigabit SFP Single-mode Dual-fiber 1310nm

---

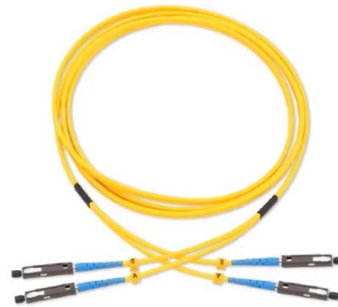


### 2RJ45 UTP 2SFP Fiber Gigabit Fiber Optical Media Converter

2100mAh Long-Lasting Battery 4G LTE Mobile Hotspot , SIM Card Supported Portable Router £26.08FREE Delivery 1.25G Gigabit SFP Module 1000BASE-LX/LH 1310nm 10km DDM Single

### 10G SFP

Looking for a cost-effective SFP+ solution that enables higher port densities and greater bandwidth? Choose the 1310-nm Singlemode SFP (LC) 10G optical



### 10G SFP+ Dual Fiber 1310nm 20km Single Mode

10G SFP+ Dual Fiber 1310nm 20km Module is a high-performance, cost-effective optical transceiver designed for 10-Gigabit Ethernet applications. Operating at a

## 11 Best Fiber Optic Switch Modules for 2026 Networking

Discover the top 11 fiber optic switch modules for 2026 networking that can elevate your infrastructure--continue reading to find the



perfect fit for your



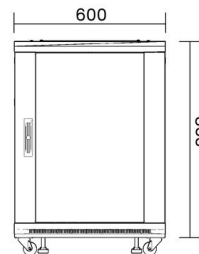
### **XG-SFP-LR-SM1310 10GBASE-LR SFP+ 1310-nm 10-km DOM**

The XG-SFP-LR-SM1310 is aligned to IEEE 10GBASE-LR optical specifications and supports a link length of up to 10 kilometers over a single-mode fiber (SMF) with an LC connector.



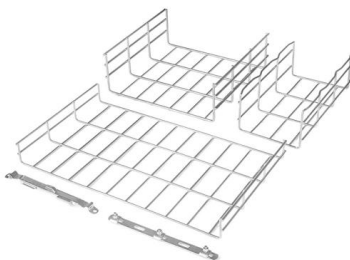
### **1.25G SFP Module Transceiver, 1000Base-LX,1310nm**

1.25G SFP MODULE- 1.25Gbps SFP Optical Transceiver, Dual LC single-mode



### **optical transceiver sfp+ 10g single mode module 1310nm 10km lc**

The 1310nm LC Interface 10G Singlemode Dual-fiber Optical Module is the workhorse of the modern network. It combines speed, distance, and reliability into a compact package.





## ipolex Gigabit Single-Mode LC Fiber to Ethernet Media

About this item Seamless Conversion of LC Fiber to Copper - This fiber optic to ethernet media converter kit includes a single mode 1000BASE-LX SFP module (1310nm), which enables you to convert 1000BASE-LX Duplex LC fiber to 10/100/1000 Base-T RJ-45 copper media or vice versa.



## Introduction of 10G SFP+ Optical Modules

10G SFP+ optical module is a popular category widely used in data centers, enterprise networks, edge devices, and CPEs. Function: They're

## 10Gtek 1.25G SFP Transceiver 1000Base-LX, 1310nm SMF

1000BASE-LX/LH SFP to LC Optical Gigabit Ethernet Fiber transceiver module, 1.25G Singlemode MiniGBIC SFP (supports OS1/OS2/OS3 fiber cables), Duplex LC connector, 1310nm, DDM, up to 13km. [Wide Compatibility] Compatible with Cisco GLC-LH-SMD, Meraki MA-SFP-1GB-LX10, Ubiquiti UniFi, Fortinet,



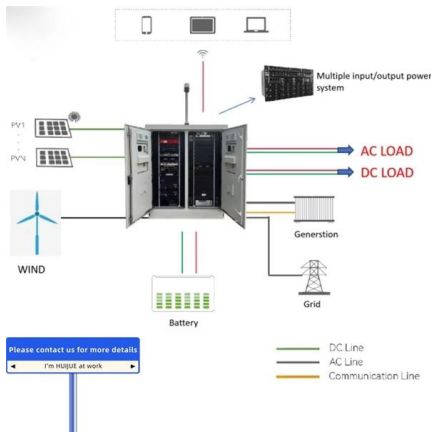
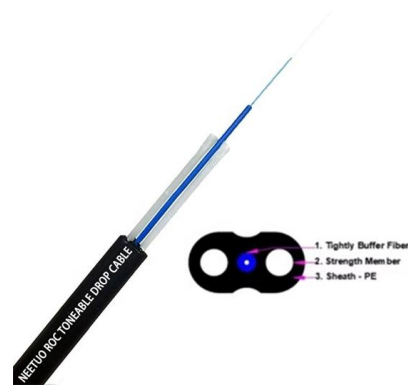
## Gigabit Single-Mode Optical Module Dual Fiber 40KM SFP 1.25G 1310nm

Gigabit Single-Mode Optical Module Dual Fiber 40KM SFP 1.25G 1310nm : Amazon.ca: Electronics Fields with an asterisk \* are required Price Availability Website (Online



### 1.25G SFP 1310nm Single-Mode Module SMF

Fiber Type:1.25Gb/s Wavelength: 1310-nm; 1PCS Dual LC Single-Mode Fiber



### SFP-10G-LR-1310nm 20km LC DDM Optical Transceiver

Single-mode optical module is used to match single-mode fiber with better transmission capacity, which is suitable for long-distance transmission. Multi

### 1G SFP LX 1310nm 20km Single mode Transceiver

Generic SFP-1G-LX Compatible 1000BASE-LX/LH SFP 1310nm 10km-20km Transceiver supports 1G gigabit Ethernet throughput over singlemode fiber (SMF)





## Optical Transceiver Module

400G QSFP-DD LR4 10km LC Optical Transceiver? The 400G QSFP-DD LR4 transceiver is a high-performance optical module designed for long-distance 400

## SFP Optical Transceiver , SFP Optical Module , Perle

Multimode and single-mode fiber Gigabit Ethernet, Fast Ethernet, Fiber channel, ATM/SONET, SDH Hot-pluggable with durable metal enclosure Can be installed



## 1PCS Gigabit Single-Mode Dual-Fiber Optical Module LC Interface SFP

1PCS Gigabit Single-Mode Dual-Fiber Optical Module LC Interface SFP Optical Module is Compatible with switches of All Major Brands (LC-10G-1310nm-2km)

## Small Form-factor Pluggable

Small Form-factor Pluggable Small Form-factor Pluggable connected to a pair of fiber-optic cables Small Form-factor Pluggable (SFP) is a compact, hot-pluggable



### **Cisco GLC-LH-SMD Compatible SFP Module**

Cisco GLC-LH-SMD Compatible SFP Module - 1000BASE-LH - 1GbE Single Mode Fiber SMF Optic Transceiver - 1GE Gigabit Ethernet SFP - LC 20km - 1310nm -

### **2Pair Gigabit Fiber SFP Module 1.25G Single Mode 40km LC 1310nm**

2Pair Gigabit Fiber SFP Module 1.25G Single Mode 40km LC 1310nm/1550nm Compatible with Multiple Types of Switches Description The Gigabit Fiber SFP Module comes with a personalized steel ring,



### **SFP Optical Module 1.25G 20km single-mode duplex-LC**

This is a industrial SFP optical module. It uses duplex single mode optical fiber and the speed rate can up to 1.25Gbps, transmission distance up to 20km.



## Haile SFP-GE40-SM1310-A Gigabit single-mode single fiber optical module

Product Overview The Haile SFP-GE40-SM1310-A is a high-performance Gigabit single-mode single fiber optical module designed for reliable long-distance data transmission. Operating at 1.25Gbps,



## A Complete Guide to 1x9 Optical Transceiver Module

1x9 optical module applications include industrial automation, telecom backhaul, and legacy network upgrades for reliable, cost-effective data links.

## 1.25g 40km SFP Fibre Optic Modules 1310nm Single

Optical modules are optoelectronic devices that perform photoelectric and electro-optical conversion. The transmitting end of the optical module converts the



## 1PCS 1.25G SFP-LX-SM1310 SFP Optical Module Compatible with Gigabit

1PCS 1.25G SFP-LX-SM1310 SFP optical module compatible with Gigabit single-mode dual fiber 20KM Specifications: 20KM -1310nm, 40KM -1310nm, 80KM -1550nm, 100KM-1550nm,



### Gigabit 1.25G Single-Mode Optical Module sfp Dual-Fiber 1310nm

Transmission distance: 10km Transmission method: single mode dual fiber Emission wavelength: 1310 Transmitted power: -9.5 ~-3 Voltage input: 3.3 Size: 1 Package type: SFP LH

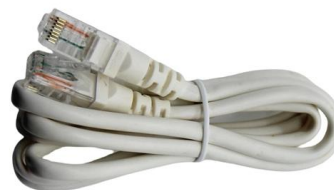


### Arista SFP-10G-LRL-Arista , 10G SFP+ Transceiver, Single-Mode,

Description The Arista SFP-10G-LRL is a 10GBASE-LRL SFP+ optical transceiver designed for short-reach single-mode fiber links up to 1 kilometer. Operating at 1310nm wavelength with duplex LC

### Amazon : Sfp Module

Upgrade your network infrastructure with versatile SFP modules. Discover options for 1G, 10G, and fiber optic standards to meet your connectivity needs.





## **100BASE FX SFP: Complete Guide to 100Mbps Fiber Transceivers**

100BASE FX SFP remains a widely used solution for deploying 100Mbps fiber connectivity in industrial, enterprise, and legacy Fast Ethernet networks. While Gigabit and higher-speed optics dominate

### **Contact Us**

---

For datasheets, pricing, or custom telecom energy solutions, please visit:  
<https://koskolong.co.za>