



Adam Tas Corridor Energy

Outdoor Non-metallic Butterfly-shaped Drop Optical Cable





Outdoor Non-metallic Butterfly-shaped Drop Optical Cable



FTTH GJYXFH butterfly-shaped optical fiber cable

The butterfly-shaped optical fiber cable is to place the optical fiber in the center, place two parallel FRP wires on both sides as reinforcing elements, and extrude a

Butterfly Drop Cable , FTTH Terminal Cable , Fasten

Fasten butterfly drop cable is conform to the EU ROHS standard, and the flame retardant grade accords with IEC60332.



Fiber Drop Cable and Its Application in FTTH

Because of its butterfly shape, it is also called butterfly optical cable and figure 8 optical cable. Structure and Type of Fiber Drop Cable The fiber drop cable is also divided into indoor and

Why Need Drop Cable For Your Outdoor FTTx Projects

Fiber optic drop cables utilize one or more optical fiber lines enclosed within protective sheaths and



serve as essential components for transmitting data directly or in combination. Communication cable



FTTH Drop Cable , Indoor & Outdoor Fiber Optic Drop

A non-metallic ftth drop cable uses Fiber Reinforced Plastic (FRP) strength members instead of steel. This makes the cable immune to electromagnetic interference

FTTH - Round Drop Armoured Butterfly-Shaped Cable

Briticom ® offers Armoured Butterfly-Shaped Cable as well as a wide range of indoor and outdoor fibre optic distribution, patching and consumer cords including



GJYXFC Self-Supporting Drop Cable , FTTH / FTTB

Ideal for use in both indoor environments and short outdoor spans, especially for



4F Butterfly Flat Indoor FTTH Drop Cable

Fiber Optic Communication System FTTH (Fiber to The Home) Indoor Building Optical fiber connected and transmitted equipment Ideal Solution by FTTH Indoor

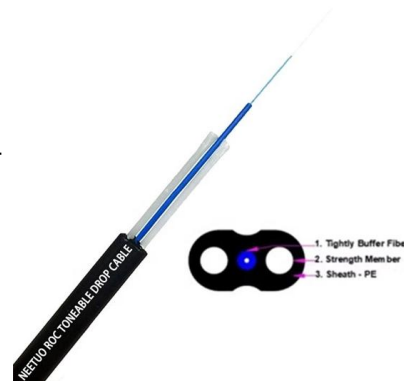


Outdoor Fiber Drop Cables FTTH 2 Core Butterfly Type Drop Optical

The cable is protected by two parallel strength members made of metal, steel wire and a LSZH outer jacket. Designed for outdoor installation, the cable is well suited for connections between the dome

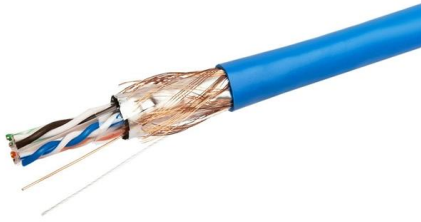
Butterfly Flat FTTH Drop Cable , FS

1 FTTH Outdoor Aerial Cable Central loose tube cables and self-supporting FTTH drop cables are designed for outdoor aerial distribution. With non-metal strength member, suitable for access network



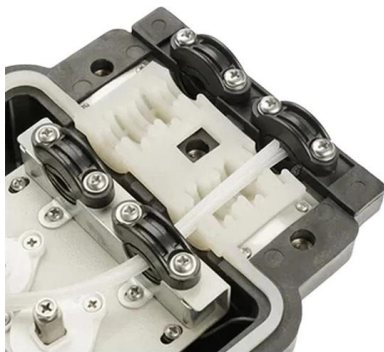
Butterfly Flat FTTH Drop Cables , OMC Butterfly Cables

Our Butterfly Flat FTTH Drop Cable is an exceptional choice for providing fast and stable internet connections. Designed with precision and innovation, this



2-8F Butterfly Flat Indoor FTTH Drop Cable assemblies.pub

Product introduction FTTH Indoor Drop Cable uses butterfly flat structure, whose optical fiber unit is positioned in the center. Two parallel Fiber Reinforced Plastic (FRP) or Steel wire

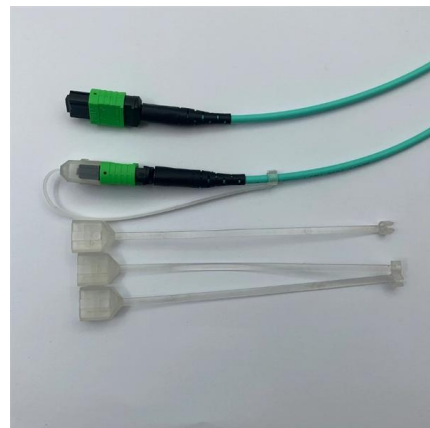


GJYXFC Self-Supporting Drop Cable , FTTH / FTTB

Description GJYXFC optical cable is designed for access network applications. The communication unit is centrally positioned, flanked by two parallel non-metallic

What is Fiber Optic Drop Cable?

What is Fiber Optic Drop Cable? Fiber drop cable is the basic fiber optic cable that is used to connect the terminal of a distribution cable to a





Pre-Terminated Outdoor Butterfly Drop Cable

The optical cable has a compact structure and excellent high and low temperature performance. The strength member adopts high-carbon steel wire, featuring superior tensile performance.

FTTH Optical Fiber Cable Drop GYFXY GJYXFCH

FTTH floor standing cable is a new type of fiber optic cable. It is a butterfly-shaped cable. Because of its small size and lightweight, it is suitable for fiber-to-the-home



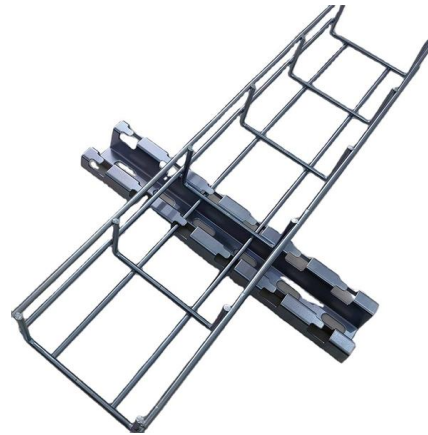
Self-supporting Butterfly Drop Optical Fiber Cable

Get a reliable self-supporting butterfly drop optical fiber cable, designed for outdoor installations. Experience durability and high quality for your networking needs.



Butterfly drop cable for outdoor overhead use-Ningbo Lianhai

Features: Optical cable has small outer diameter, light weight, and low construction cost; Using cold connection technology, fast connection speed; The optical cable has high resistance to flattening and



Outdoor prefabricated end butterfly drop optical cable

Address: No.43, Sanhai Road, East Zone of Guanhaiwei Industry Zone, Cixi City China Phone: +86-574-63668812 Fax: +86-574-63668501 Email:



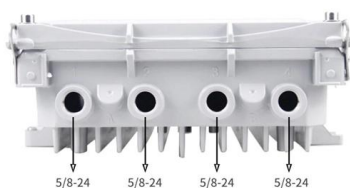
Drop Cables , Optical Communications , Corning

Drop cables are the critical connection between a service provider's distribution network and the end user's home or business. Designed to deliver high-speed



From Installation to Longevity: A Complete Guide to FTTH Butterfly

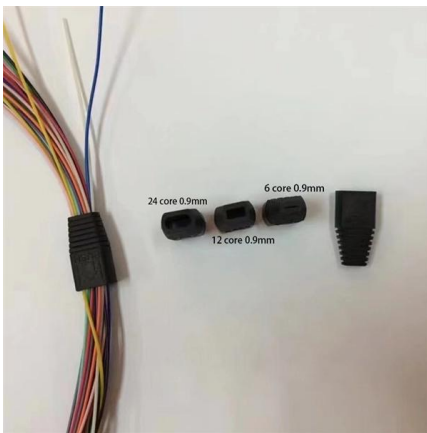
What Is an FTTH Butterfly Optical Cable? An FTTH butterfly optical cable -- also referred to as a flat drop fiber cable -- is a compact, single-mode fiber optic cable engineered specifically for last-mile





Fiber Optic Drop Cable Guide

Types of Drop Cable The main types of drop cables include indoor drop cables (GJXFH, GJXH, GJXKH), outdoor self-supporting drop cables

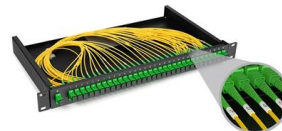


FTTH Drop Cables , Indoor & Outdoor Fiber Drop Solutions

In any FTTH (Fiber to the Home) network, the drop cable is the final and most critical part of the optical access network. It connects the outdoor

GJYXCHN Self-supporting Butterfly Lead-in Non-Metal fiber Optical

Its butterfly-shaped structure allows for easy stripping and installation, offering excellent tensile strength and weather resistance. As it is entirely non-metallic, it is ideal for use in non-metallic environments



Contact Us

For datasheets, pricing, or custom telecom energy solutions, please visit: <https://koskolong.co.za>