



Adam Tas Corridor Energy

PE wire connection in the distribution box





Overview

The PE conductor must have a cross-section of at least 10 mm² or must have a second PE connection with a cross-section at least equal to the mains feeder (cf. These conductors conduct fault current due to insulation failure (between a phase conductor and an exposed. Find the grounding bar or PE bar Open the distribution box and find the position marked with the grounding plate or PE letter. Why are the N and PE rails in a household switchboard bridged, and should they be connected if the PEN conductor has already been split at the meter box?

The N and PE rails are only bridged at the PEN split point; if the PEN has already been separated upstream, the N and PE rails in the house. The three-phase five-wire system includes three phase wires (A, B, C wires), neutral wire (N wire), and ground wire (PE wire) of three-phase electricity.



PE wire connection in the distribution box

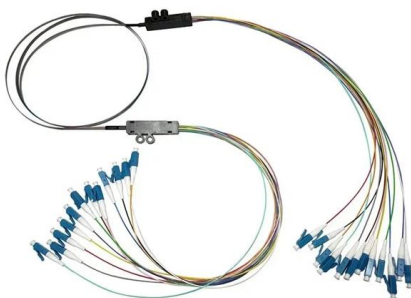


on video **How to Wire a Home Distribution Box**

How to Wire a Home Distribution Box - Step-by-Step , Distribution DB box wiring diagram
Welcome to our channel! In this video, we'll walk you through the

Browse Hard Wired Distribution Boxes , TE Connectivity

TE Connectivity's (TE) hard-wired power distribution boxes and systems help provide the next evolution of reliable and optimized power network structure. The increasing number of functions in vehicles



Understanding Circuit Breaker Wiring Configurations in

Protective Earth (PE) Wire Connection: For circuit breakers with residual current protection (RCDs such as 1P+N with RCD or 2P with RCD), a

What Is PE In Electrical Wiring

What happens if PE wiring is not installed correctly? Incorrect installation of PE wiring can lead to potential electrical



Protective Conductor (PE): What is it? (Designation, Cross-section

Each exposed-conductive-part of class I equipment must be connected by a separate protective conductor which is formed, for example, as a branch from the protective conductor of the



Distribution box Wiring Connection Diagram , Animated Guide , DB Box

The basics of home electrical distribution systems Key components of a wiring diagram How to safely and efficiently connect circuits Step-by-step animated instructions Whether you're a DIY



Power Distribution Boxes Explained Simply

Bus bars and internal wiring help distribute electricity to each connected circuit efficiently. The box keeps everything safe by balancing the load,





How to Wire a Single Phase Breaker Box: Step-by-Step

The wiring diagram for a single phase breaker box illustrates the connections and distribution of electrical power within the panel. It shows how the main breaker,



Connection and choice for protective earthing conductor

Connection PE conductors must: Not include any means of breaking the continuity of the circuit (such as a switch, removable links, etc.) Connect exposed conductive parts individually to the

How to Wire 120/240V Main Panel

These three wires enter the meter box and then connect to the main panel. In the following tutorial, we will show how to wire 120V single-phase and 240V split



The installation requirements for the distribution box

Learn how to install a distribution box safely and correctly. Covers wiring, placement, standards, and expert tips for a compliant setup.



Explain in detail the connection method of the three-phase five-wire

The three-phase five-wire system standard wire colors are: A wire is yellow, B wire is green, C wire is red, N wire is light blue, and PE wire is yellow-green.



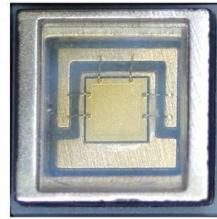
PE connection

EN 61800-5-1 requires that the devices be firmly connected on the power side. The PE conductor must have a cross-section of at least 10 mm² or must have a second PE connection with a cross-section



Grounding System Installation Standards for Distribution Boxes and

Understanding Electrical Grounding Fundamentals Grounding isn't just about connecting a wire to a rod in the dirt--it's a sophisticated balancing act for your entire electrical system. Remember those



How to Wire a Home Distribution Box

The above mentioned electrical wiring accessories and protective devices are used to control and distribute electric supply (safely to connected electrical appliances)



N and PE terminal rails

As the PEN conductor has been separated in the PGE meter box, the PE and N terminal strips should not be connected to each other in the main



Correct Connection Method Of Grounding Wire Of

Open the distribution box and find the position marked with the grounding plate or PE letter. This position is the connection point of the grounding





How to Wire a Home Distribution Box

Welcome to our channel! In this video, we'll walk you through the process of wiring a home distribution box with a detailed connection diagram. Whether you're an electrician or a DIY enthusiast

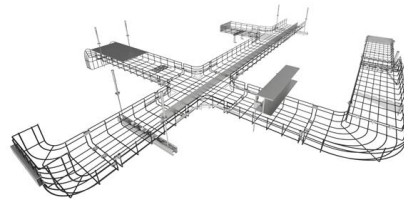


Residential Electric Meter Box Wiring Diagram Guide

Clear wiring diagram for residential electric meter box, showing connections, safety components, and layout for accurate installation and maintenance.

Size determination, installation method and wiring mode

The distribution box is the central hub of the home circuit and the general control of our daily power consumption. It is an indispensable electrical equipment. If there



Englisch

The external equipment-grounding-conductors (i.e. the main grounding conductor from customer's power distribution panel as well as the other conductors of the grounding system outside of cabinets



Explain in detail the connection method of the three-phase five-wire

The three-phase five-wire system includes three phase wires (A, B, C wires), neutral wire (N wire), and ground wire (PE wire) of three-phase electricity. The neutral wire (N wire) is the neutral wire. When



Connection and choice for protective earthing conductor

Protective Earthing (PE) conductors provide the bonding connection between all exposed and extraneous conductive parts of an installation, to create the main equipotential bonding

How To Wire A Distribution Board (DB Board): A Step-By-Step Guide

A distribution board (DB board), also known as a fuse box or breaker panel, is essential for managing electrical circuits in a building. It distributes electrical power from the main supply to





Wiring of the Distribution Board From Energy Meter to



How to Wire a Distribution Board? Distribution Board also known as "Panel Board", "Switch & Fuse Board" or "Consumer Unit" is a box installed in the building

Connecting the Meter to the Breaker Box: A Guide to

Learn about the important wire connection between the meter and breaker box for electrical systems. Ensure a safe and efficient power distribution.



Contact Us

For datasheets, pricing, or custom telecom energy solutions, please visit:
<https://koskolong.co.za>