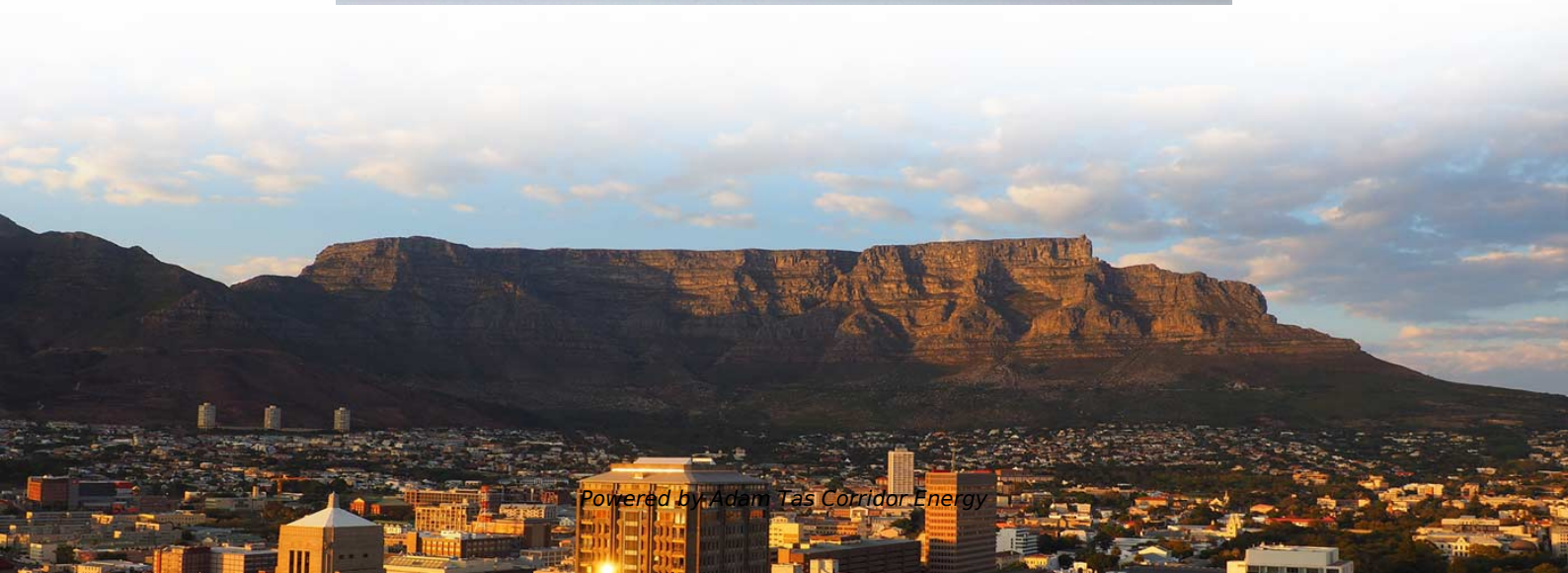




Adam Tas Corridor Energy

PE wire for distribution box equipment





Overview

PE-insulated cables are commonly used in power distribution and transmission systems. They offer good electrical properties and are suitable for both overhead and underground applications. Protective conductor (identification: PE): conductor provided for purposes of electrical safety (source IEC 60050-195:2021). Electrical safety is a critical aspect of any power distribution system, and two essential protective measures are Protective Earthing (PE) and Protective Neutral (PEN). Mouser offers inventory, pricing, & datasheets for Polyethylene (PE) Hook-up Wire. How should I wire a construction switchboard when the supply has 3 phases and neutral but no separate ground: bridge PE to N, add grounding, or rely on an RCD?

If the supply is TN-C with a PEN conductor, bring the PEN to the construction switchboard and split it into separate N and PE there; do not. This thermoplastic material is referred to as PE, or occasionally the more specific compounds MDPE (medium density polyethylene) and HDPE (high-density.



PE wire for distribution box equipment



What Are the Main Materials Used in Distribution Boxes

You can find distribution boxes made from various distribution box materials such as steel, aluminum, PVC, polycarbonate, high-density polyethylene, and thermoset

Grounding System Installation Standards for Distribution Boxes and

Hey there! If you're working with electrical systems, you know that grounding isn't just some bureaucratic requirement--it's literally the difference between a safe, functional system and a potential disaster.



tech_doku_schutzleiteranschluss_en

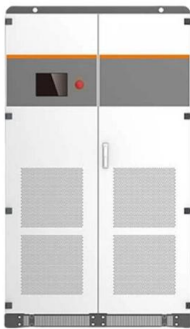
One assembly component should be marked with a PE conductor symbol to label its function as a PE conductor. An additional PE conductor connection is not required.

PE Distribution Box , Portable Power Distribution Solution

Durable PE electric distribution box for safe power distribution. Portable, weather-resistant,



and ideal for construction and temporary applications.

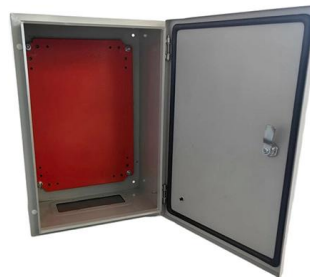


Size determination, installation method and wiring mode

The distribution box is the central hub of the home circuit and the general control of our daily power consumption. It is an indispensable electrical equipment. If there

Best Material for LV Distribution Box , Axis Electricals

Learn which material is ideal for your LV distribution box. Axis Electricals explains how to choose the right enclosure for safety, durability, and



Cable structure

Correct Connection Method Of Grounding Wire Of

Open the distribution box and find the position marked with the grounding plate or PE letter. This position is the connection point of the grounding



Outdoor Electrical Distribution Box Specifications: NEC

Complete specification guide for outdoor electrical distribution boxes covering NEC Article 312 requirements, NEMA ratings, sizing calculations, and



Connection and choice for protective earthing conductor

Connection PE conductors must: Not include any means of breaking the continuity of the circuit (such as a switch, removable links, etc.) Connect exposed conductive parts individually to the

Ex E Terminal & Junction Boxes IP66 Terbox · Atex

For installation of signal and power distribution networks in explosion hazardous areas, various types of terminal boxes and junction boxes are available. They are



PE Power Distribution Box :

Ozplast PE Power Distribution Box's are manufactured locally In the UAE and made from high quality PE Material. The Power Distribution Box are portable and



Power Distribution Equipment

Introduction Power Distribution Equipment is a term generally used to describe any apparatus used for the generation, transmission, distribution, or control of electrical energy. This section concentrates



Polyethylene (PE) Hook-up Wire - Mouser

Mouser offers inventory, pricing, & datasheets for Polyethylene (PE) Hook-up Wire.

Sizing of protective earthing conductor

^ Data valid if the prospective conductor is of the same material as the line conductor. Otherwise, a correction factor must be applied. ^
When the PE conductor is separated from the



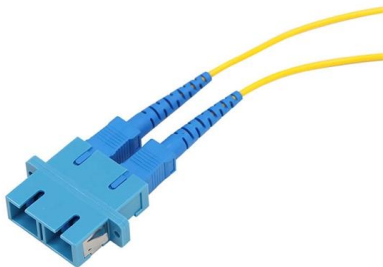
Portable Power Distribution Systems

6493221 PDU with IEC Cable Assembly 0.99 MB
Custom Power Distribution Unit - 100A, 3 Phase, 3 Pole, 5 Wire Walther Electric provides power distribution



How to Install a Cable Distribution Box Safely and

Application scenarios: The distribution box is widely used in residential, commercial, and industrial electrical systems as the core distribution



Distribution Box Manufacturer, Best Power Distribution

Distribution Box Manufacturer DOHO is a major manufacturer of distribution boxes and products in China. We have been providing quality OEM/ODM service to

What is PE Cable? Advantages & Uses

Discover what PE cable is: HDPE & XLPE types explained. Where to use it (power grids/data centers) & how to maximize performance. Make the right





PE Cables , Polyethylene sheathed , Eland Cables

Global supplier of PE, MDPE and HDPE sheathed cables for external applications requiring abrasion resistance, oil & chemical resistance, and good water resistance properties.



PE Cables

PE-insulated cables are commonly used in power distribution and transmission systems. They offer good electrical properties and are suitable for both overhead and underground applications.



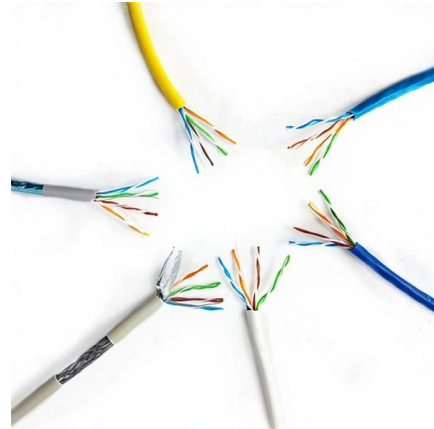
Complete Guide For Distribution Boxes Types

Distribution boxes, also known as electrical distribution boards or panels, are pivotal components in electrical systems, ensuring the safe and organized distribution of



Cable Distribution Box, Outdoor Cable Junction Box

DOHO is a leading cable distribution box manufacturer and supplier. We cater to applications including industrial, data center, security, and telecommunications.



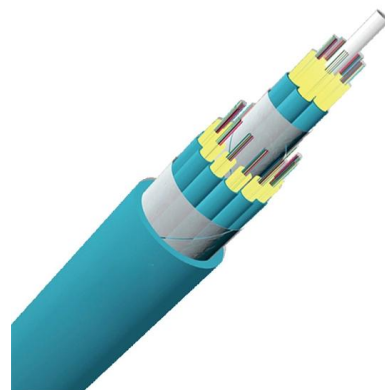
Protective Conductor (PE): What is it? (Designation, Cross-section

Each exposed-conductive-part of class I equipment must be connected by a separate protective conductor which is formed, for example, as a branch from the protective conductor of the



Englisch

The external equipment-grounding-conductors (i.e. the main grounding conductor from customer's power distribution panel as well as the other conductors of the grounding system outside of cabinets



PE connection

EN 61800-5-1 requires that the devices be firmly connected on the power side. The PE conductor must have a cross-section of at least 10 mm² or must have a second PE connection with a cross-section





Power Distribution Boxes Explained Simply

Learn what a power distribution box is, how it works, key components, types, and why it's vital for safe and efficient electrical systems.



Understanding Circuit Breaker Wiring Configurations in

Correct wiring methods for circuit breakers within distribution boxes are fundamental to ensuring electrical safety and compliance with established codes.

Distributor's Box Wiring: Bridging PE with N or Creating

The discussion revolves around the proper grounding methods for a construction distributor's box that provides three-phase power and neutral but



Understanding the Differences Between Protective

Electrical safety is a critical aspect of any power distribution system, and two essential protective measures are Protective Earthing (PE) and Protective Neutral



Distribution materials specification

Find comprehensive specifications for distribution materials used in the Saudi Electricity Company's network, including design, manufacturing, and performance



Contact Us

For datasheets, pricing, or custom telecom energy solutions, please visit:
<https://koskolong.co.za>