



Packet loss at the core switches VLAN port

An Extensive Library of Self-Developed Products



Optical Distribution Frame



Rack Mount Fiber Patch Panel



Stand Network Cabinet



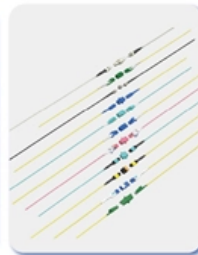
Fiber Optic Distribution Box



Fiber Adapters



Copper Cable Patch Panel



Fiber Patch Cords





Packet loss at the core switch s VLAN port

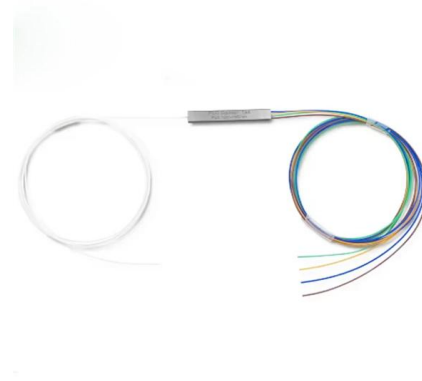


Troubleshooting VLAN Connectivity Issues

Pinging between VLANs or capturing traffic between VLANs shows packet loss, even though the physical NICs (vmnics) are reported as being up (from the physical switch and the ESXi hosts).

How to Troubleshoot and Resolve Packet Loss

1. Identify the Cause of Packet Loss Before diving into troubleshooting, it's important to understand the common causes of packet loss



S3410 Series Switches Port Packet Loss Troubleshooting , FS

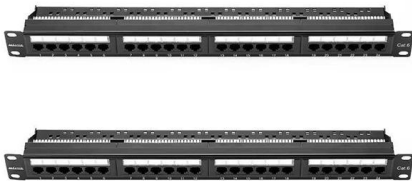
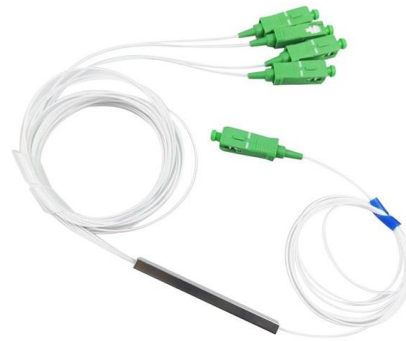
Summary: Port packet loss is only a possible cause of Layer 2 and Layer 3 forwarding. If you encounter a Layer 2 or Layer 3 forwarding failure, you still need to troubleshoot according to the above possible

Packet loss on TL-SG2428P after enabling VLAN profile on ports

Situation: After configuring a VLAN interface and then enabling that VLAN interface on the above



switch, I can see and experience frequent packet loss across my entire network (not just

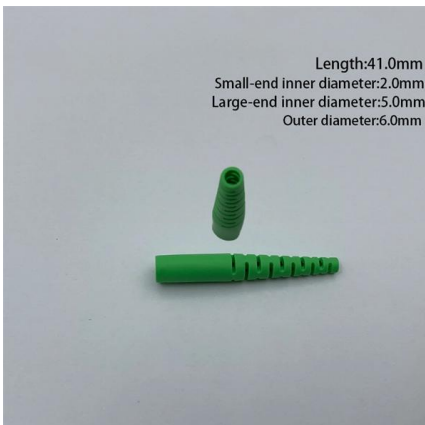


Solved: Packet loss in switch

Hi Please see the attached picture, which comes from Solarwind. The orange represents packets loss. Switch is 2960. some packets were lost. What

Dropping packets on specific VLAN only : r/networking

It's my firm believe that the core switch is discarding these packets from VLAN 100 to the open internet for some reason or another. It shouldn't be link saturation.



packet loss between networks / VLANs

Hi all, what is an acceptable amount of packet loss between networks / VLANs. for example what would you expect in the following situations PC (VLAN10) -- Switch -- PC (VLAN10)



Packet loss in VLAN setup

Currently, FE1 connects to the main LAN switch (a simple managed Planex switch). In the future I want to run the Planex into the FE9 port of the 1812 so that I am able to start using the

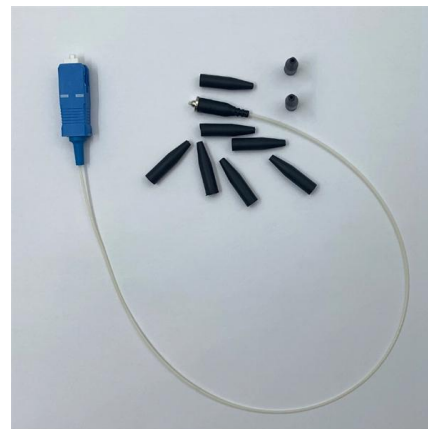


How to Troubleshoot and Resolve Packet Loss

Below is a comprehensive guide to identifying and resolving packet loss issues on 10GbE switches, including commands for checking port status on

Port base VLAN packet loss when connected to same switch (TP-Link)

PCs on VLAN2 have 60-70% packet loss, pinging the routers VLAN2 interface results in lots of time outs. The VLAN1 PCs don't suffer quite as badly but I am getting packet loss, enough to



Intermittent Packet Loss on Switch Only on Secondary VLAN

It is a port channel that contains 4x 10gb ports uplink to the core switch (not sure if that's normal, if it isn't please let me know lol). Resolution Wanted to edit the post to mark this as resolved. We determined



50% packet loss ping between VLAN

I have configured 4 different vlans on the 4 switches on the right, when i ping between the vlans i have a 50% package drop. I've setup vlan port on fa =0/5 on all the switches, trunking on port



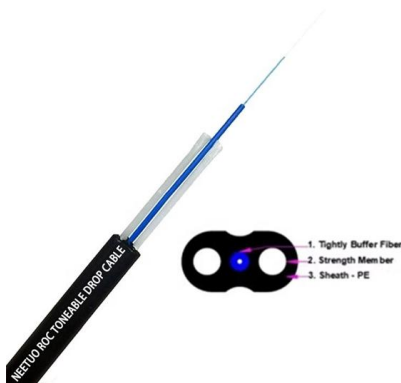
Solved: Packets loss at the same VLAN

Hi everybody. This is my first discussion here. I have an issue, and I would like your help. My client is having packets loss between servers at the same VLAN. They have a Cluster

Inter-Vlan packet loss on subnet gateway

Hopefully you can narrow down the latency and packet loss to a particular link or interface. You can check the show interface X for the interfaces





Troubleshooting VLAN Related Issues on a Switch in

Trunk Port Issues: VLANs may not be correctly configured on trunk ports connecting to other switches or routers. VLAN Not Created: The VLAN may not be created or

Solved: Packet Loss between VLANS

Hi all, I have a C2970 Switch and I am having some real bad packet loss. I finally moved some network devices from VLAN1 to VLAN20 and now I am getting very bad packet loss from items



Layer2 misconfiguration

The most noticeable issue would be that packets from ether1-ether5 through ether10 are simply dropped, this is because these ports are located on different switch chip, this means that VLAN

troubleshooting Packet Loss at Layer 2 on Cisco CataLyst 2960

troubleshooting Packet Loss at Layer 2 on Cisco CataLyst 2960 HI, I'm desperately trying to figure out what show command I could use to notice any packet that my Cisco switch C2960 (version below)



lost of packet Switch Aruba 2930F

In general a mirror port gets the lowest priority in the switching silicon, to not inhibit the performance of the traffic ports. With that in mind, if all traffic crossing interfaces is mirrored to the

Switch Port Packet Loss Troubleshooting , FS

Summary: Port packet loss is only a possible cause of Layer 2 and Layer 3 forwarding. If you encounter a Layer 2 or Layer 3 forwarding failure, you still need to troubleshoot according to the above possible



HIGH PING LATENCY TO VLAN GATEWAYS

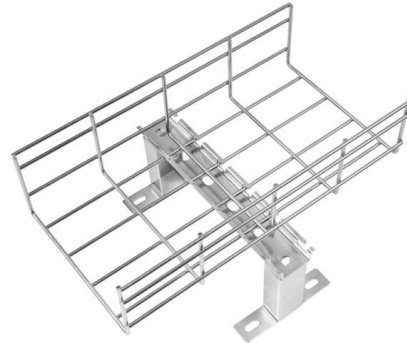
Hi, I am getting high latency while pinging to VLAN gateways, which is created in core switch. The ping status to the client devices are normal (1ms). The two core switches are 4500,





Layer2 misconfiguration

The most noticeable issue would be that packets from ether1-ether5 through ether10 are simply dropped, this is because these ports are located on different switch chip, this means that



Solved: Packets Loss

Hi there, I am working on different networks and realise a few of them, complaining of connectivity issues, have quite a bit of packet loss even internally on their network. Most of this

Switch Port Packet Loss Troubleshooting , FS

Therefore, not only the packet loss on the port will cause the layer 2 forwarding packet loss, but also the packet loss caused by other more complex factors. To sum up, there are several reasons: (1) Duplex

190X95X25mm



Understanding VLAN types: Private, Static, Dynamic, Trunk

For example-the client has sent 6 packets at the reciving end the server only got 4 out of 6 packets.Hence there is 33.3 % packet loss. ? Bandwidth -Link speed refers to maximum rate at which



Contact Us

For datasheets, pricing, or custom telecom energy solutions, please visit:
<https://koskolong.co.za>