



**Adam Tas Corridor Energy**

# **Packet loss under the same aggregation switch**





## Overview

---

Verify LAG (Link Aggregation Group) of a Juniper Networks EX Series switch is UP and troubleshoot it if it is not. Port aggregation is useful for implementing load balancing and provides a redundant link backup. It enhances bandwidth, provides fault tolerance, and allows load balancing between connected devices. The following are the common causes for this type of issue:

- Incorrect configuration on the aggregate interface.



## Packet loss under the same aggregation switch

---



### How To Set Up Switch Link Aggregation

In this article, I'm going to describe how to set up Link Aggregation between two managed switches to provide connectivity, redundancy, and expanded

### Understanding Network TAPs

A network TAP is a hardware component that connects into the cabling infrastructure to copy packets for monitoring purposes. A SPAN (switch port analyzer) is a software function of a switch or router that



### Back Button

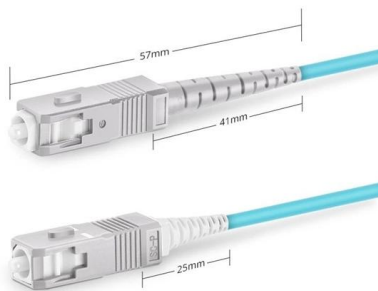
Hier sollte eine Beschreibung angezeigt werden, diese Seite lässt dies jedoch nicht zu.

### In-depth analysis: What is an aggregation switch?

In many network constructions, we have all heard of switches. So do you really understand



switches? Why are aggregation switches often overlooked?



Simplex SC UPC

## Solving Traffic Imbalance in Aggregation Groups After Switch Stacking

Switch stacking is a popular technique used to combine multiple switches into a single logical unit, simplifying management and improving network scalability. However, one common issue that arises



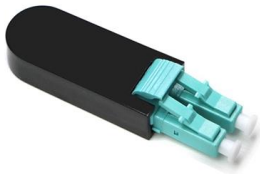
## Link Aggregation and Ethernet Bonding Feature Overview and

Ethernet bonding is used to refer to static or dynamic (LACP) aggregation configured on router Ethernet ports, where the router's CPU manages the link aggregation and the packet hashing and forwarding



## Configuring Link Aggregation Group and Link Aggregation Control

Link Aggregation Group and Link Aggregation Control Protocol Configuration Procedures Cost savings resulting from use of existing hardware and software for additional functions.



### Support

Use the display link-aggregation verbose command to check if the number of member ports in the aggregation group reaches the upper limit. If yes, the excess

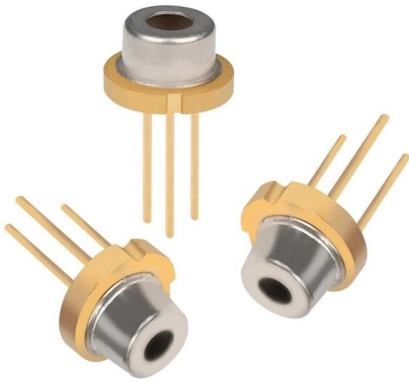
## What Are Link Aggregation, LAG, and LACP?

What Is LAG and How Does It Work? Link Aggregation Group (LAG) is the practical implementation of link aggregation, where multiple physical ports are



## Link Aggregation: Static vs Dynamic, LACP, and MLAG Configuration

Understand how link aggregation (LACP, MLAG, static vs dynamic) improves bandwidth and redundancy. Learn configuration steps on Cisco and Huawei switches and best practices for



## Link aggregation explained

IEEE link aggregation Standardization process By the mid-1990s, most network switch manufacturers had included aggregation capability as a proprietary extension to increase bandwidth



## How to set up switch Link Aggregation (LAG) - HeelpBook

LAG example We're going to set up Link Aggregation between two gigabit switches: an 8 port Linksys SRW2008; and a 16 port Netgear GS716GT, shown in Figures

## Resolution Guide

Confirm that at least one LAG child interface in the Aggregated Ethernet bundle is Physically Up (Link status Up). For each Child Interface that is not 'up up', follow the steps in the



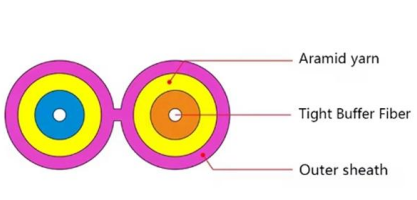


## Support

To prevent packet loss that might occur at a reboot, do not enable the spanning tree feature together with link-aggregation traffic redirection. Link-aggregation traffic redirection cannot ensure zero packet

## Interfaces User Guide for Switches

Link Aggregation Group (LAG) You configure a LAG by specifying the link number as a physical device and then associating a set of interfaces (ports) with the link. All the interfaces must have the same



## I1: Best Practices for Packet Collection, Aggregation & Distribution in

Design to eliminate packet loss in the monitoring fabric - Over subscription often due to excessive aggregation or uplink capacity - If packets go missing there, you've got an unreliable and potentially

## Junos Aggregated Ethernet Example

LACP is configured under the aggregated-ether-options of the relevant ae interface. You must choose to have it set as either active or passive, and at least one of the ends must be set to active.



### Aggregation Layer

Aggregation-layer submodule The aggregation-layer submodule plays a pivotal role in providing a highly reliable, scalable "middle layer" for bringing together the traffic from the access-layer submodule,



### Wiley Online Library , Scientific research articles, journals, books

Hier sollte eine Beschreibung angezeigt werden, diese Seite lässt dies jedoch nicht zu.



### Performance Analysis of Packet Aggregation Mechanisms and Their

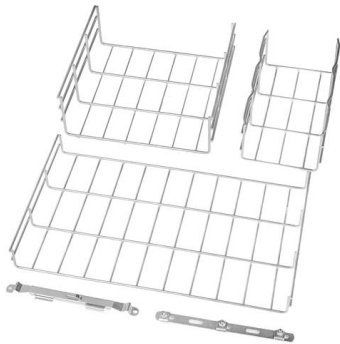
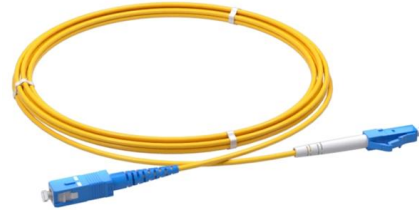
This paper presents a review of packet aggregation applications in access networks (IoT and 4G/5G mobile networks), optical core networks, and cloud computing data centre networks. We also





## Chapter18:Link Aggregation Configuration

To aggregate multiple physical ports into a logical channel, you can use static aggregation or LACP protocol for negotiation.



### Link Aggregation and Load Balancing

You may want to set up and configure a bonded link between your Meraki MS series switch and a Cisco switch. This is often referred to as link aggregation, link bonding or EtherChannel.

### What is an Aggregation Switch?

The aggregation switch is located in the middle of the network architecture, which is equivalent to a middle-level manager of a company. It



### Load Balancing on Aggregated Ethernet Interfaces

Load balancing on aggregated ethernet interfaces reduces network congestion by dividing traffic among multiple interfaces. When you bundle several physical



## Modelling Downlink Packet Aggregation in Paced 802.11ac WLANs

In this paper we develop an accurate yet simple analytic model of packet aggregation on the downlink of an 802.11ac WLAN when packet arrivals are paced. Three factors combine to make finite-load

### REINFORCED VIRGIN PVC TRUNKING

Superior Crush Resistance



37.6MPA  
Tensile Strength



2856MPA  
Elastic Modulus



9.8KJ/M<sup>2</sup>  
Impact Strength



1.54G/CM  
Density



## Chapter18:Link Aggregation Configuration

1.1 Overview Port aggregation is binding the physical ports with the same attribute together, so as to establish a logic channel. To aggregate multiple physical ports into a logical

## Multi-chassis Link Aggregation Group

MLAG (Multi-chassis Link Aggregation Group) implementation in RouterOS allows configuring LACP bonds on two separate devices, while the client device believes to be connected to





## Contact Us

---

For datasheets, pricing, or custom telecom energy solutions, please visit:  
<https://koskolong.co.za>