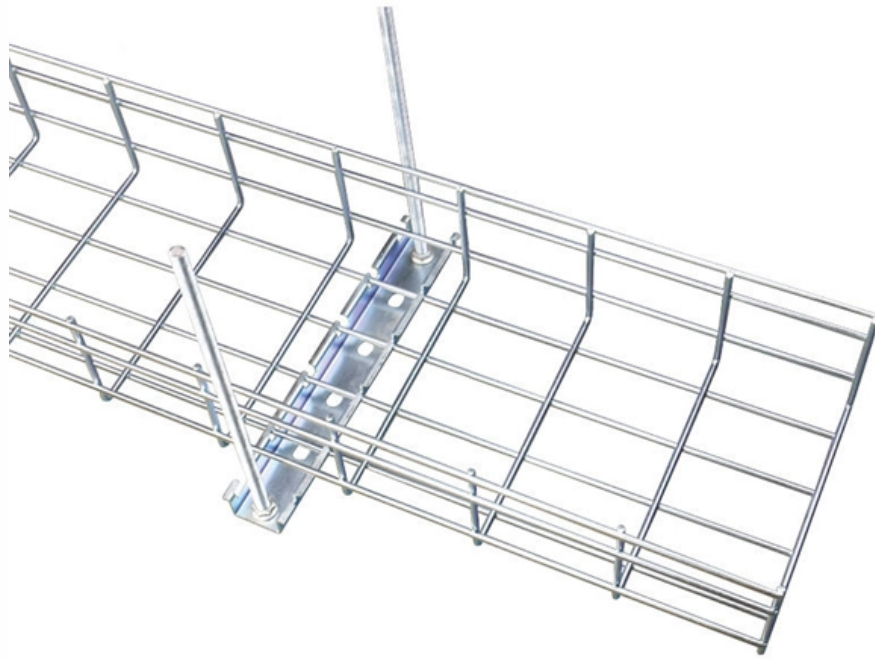




Adam Tas Corridor Energy

Papua New Guinea Butterfly Drop Optical Cable 6 cores





Papua New Guinea Butterfly Drop Optical Cable 6 cores

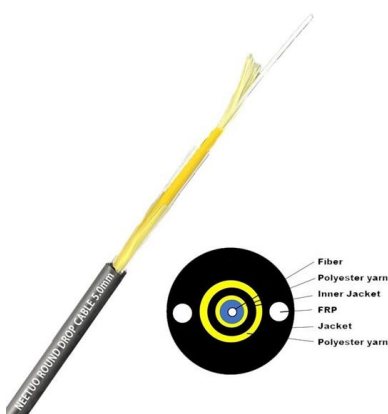
Bluerigger Digital Optical Audio Toslink Cable 6ft Fiber Optic Cord



Shop Bluerigger Digital Optical Audio Toslink Cable 6ft Fiber Optic Cord at best prices at Desertcart Papua New Guinea. FREE Delivery Across Papua New Guinea. EASY Returns & Exchange.

Factory Direct Butterfly 1 Core G657A LSZH FTTH Drop Cable , Optical

Looking for high-quality Optical Fiber Cable Flat Type Butterfly 1 Core G657A LSZH FTTH Drop Cable? Look no further! We are a factory specializing in manufacturing this premium product. Order now!



What the Coral Sea Cable will really mean for Papua

The Coral Sea Cable from Sydney to Port Moresby, which will greatly increase internet speeds in Papua New Guinea, will be ready for commercial use

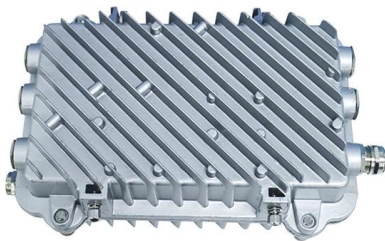
The System -- Coral Sea Cable Company

The 4700 km Coral Sea Cable System is a 40Tbps submarine fibre optic cable



Coral Sea Cable Company

The Coral Sea Cable System is a 4700km long fibre optic submarine cable system linking Sydney, Australia, to Port Moresby, Papua New Guinea and Honiara.



Coral Sea Cable System

The Coral Sea Cable System (CS2) is a 4700 kilometre-long fibre optic submarine telecommunications cable that links both Papua New Guinea and Solomon Islands to the major East



PNG DataCo upgrades internet gateway, shifts traffic to PPC-1

Papua New Guinea's state-owned wholesale operator PNG DataCo says that it has completed an upgrade of its internet gateway with a 100-Gbps link that enables it to migrate traffic



Outdoor FTTH Drop Fiber Cable, Self-Supporting

FTTH outdoor drop cable (GJYXFCH/GJYXCH) is also called self-supporting butterfly drop optical cable which consists of a indoor butterfly cable and an



PPC-1

The PPC-1 (PIPE Pacific Cable 1) submarine cable system consists of two segments of digital fiber-optic cable: (1) the Australia-Guam Trunk, connecting Sydney,

Coral Sea Cable System (Australia Papua New Guinea Solomon)

The CS2 has a four fibre-optic pair core, sheathed in one physical cable from Australia over 2500 km to a Branching Unit (BU) in the Coral Sea, where the four fibre-pair core is then split into two cables,



Network Cabinet & Rack

Coral Sea Cable System makes big progress

The 4,700km Coral Sea Cable System under construction by Australian operator Vocus has achieved two major milestones, with the cable now



Butterfly Flat FTTH Drop Cable

Butterfly flat FTTH Drop Cable adopts a butterfly flat structure design, a fiber unit in the center, and two FRP strength members placed at the two sides. Then, the



Coral Sea Cable System project marks key milestones

The 4,700km Coral Sea Cable System under construction by Vocus, has achieved two major milestones, with the cable now



COUNTRY REPORT in PAPUA NEW GUINEA

Telecommunications in PNG The PNG telecommunications network comprises of microwave radio, satellite (domestic & international) and optical fibre transmission systems (intra-city and



6 Core FTTH Fiber Drop Cable G.657A2 FRP LSZH

In the center of the cable is the optical communication unit, with the two parallel non-metrical enhanced FRP/Metal/KFRP as the strength member,



Butterfly Drop Cable

It can be used for laying in indoor environments such as vertical shafts, concealed pipes, cable trays, walls, flower boards, etc. It can be matched with connectors for



Subsea cables connecting Papua New Guinea to Australia and

The Coral Sea Cable System (CSCS), backed by Australia, appears to be on track for completion by the end of 2019, bringing an additional 20 Tbps of capacity to Papua New Guinea as of 2020. Several



Butterfly cables, Butterfly fiber optic cables

Butterfly Fiber optic cables are specifically designed for use in indoor environments, often in confined spaces such as inside buildings or data centers. They are



Leading Fiber Optic Supplier Port Moresby

If you're searching for a dependable fiber optic supplier in Port Moresby, Cetelnet delivers the quality, support, and local expertise you can trust. We're committed

Coral Sea Cable System

Project highlights The Coral Sea Cable System (CS2) is a 4,700 km fibre-optic submarine telecommunications cable that links both Papua New Guinea and Solomon Islands to the major East





The Coral Sea Cable: One Step Closer to Cheaper

TechInPacific - The Coral Sea Cable is a collaborative project between Australia and Papua New Guinea (PNG) through the Australian

China Butterfly Drop Optical Fiber Cable Manufacturers

High-quality Butterfly Drop Optical Fiber Cable from Yancheng Jingze New Material Technology Co., Ltd. ensures reliability for all your fiber optic cable needs at competitive prices.



Cables & Leads Archives


Cables & Leads At Brian Bell Trade Electrical we stock the most extensive range of Cables and Leads in PNG.

Leading Fiber Optic Supplier Port Moresby

We're committed to powering Papua New Guinea's digital future with high-performance fiber products and customized solutions. Contact us today to find the



Ordering information

NO.	1	2	3	4	5	6
Model	SP-201	SP-202	SP-203	SP-204	SP-205	SP-206
Product name	Patch Panel	Patch Panel	Patch Panel	Patch Panel	Patch Panel	Patch Panel
Illustration						
M2	1	2	4	1	2	4
Maximum number of cores	144	288	576	144	288	576
Product size (including module and connector)	482.8*102.5*47 (mm)	482.8*102.5*81 (mm)	482.8*102.5*117 (mm)	482.8*102.5*47 (mm)	482.8*102.5*81 (mm)	482.8*102.5*117 (mm)
Standard color code	RAL9005	RAL9005	RAL9005	RAL9005	RAL9005	RAL9005
Inventory	2	2	2	2	2	2



6

What Is 6 - 12 Cores Drop Cable FTTH Butterfly Flat Type Indoor Drop Cable ? Product introduction FTTH Indoor Drop Cable uses butterfly flat structure, whose optical fiber unit is

From Installation to Longevity: A Complete Guide to FTTH Butterfly

Learn how to install FTTH butterfly optical cables correctly, avoid common mistakes, and maximize service life with practical maintenance strategies.



PPC-1

The Australia-Guam Trunk of the PPC-1 cable system consists of two optical fiber pairs, with a design capacity of 96 wavelengths (10 Gbps) on each fiber pair, for a



6-12 Core Butterfly Optical Cable, FTTH Drop Optical Cable Wholesale

OMC specializes in R&D and production of 6-core to 12-core butterfly drop optical cables, please leave a message to purchase



Contact Us

For datasheets, pricing, or custom telecom energy solutions, please visit:
<https://koskolong.co.za>