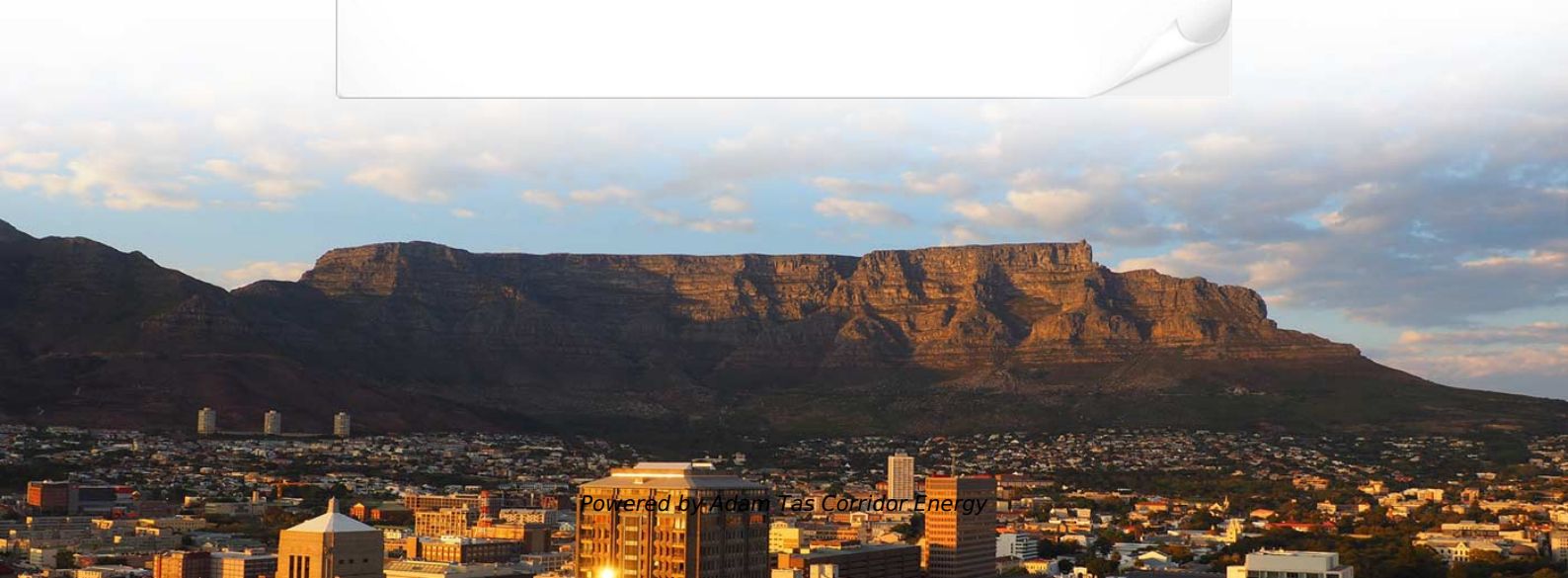




**Adam Tas Corridor Energy**

# **Parameter Settings for Mongolian Communication Distribution Box**





## Overview

---

As the least densely populated country in the world, with a significant portion of the population living a nomadic lifestyle, it has been difficult for many traditional (ICT) companies to make headway into society.



## Parameter Settings for Mongolian Communication Distribution Box

---

### How to Stay Connected from Mongolia: Complete Guide to Communication

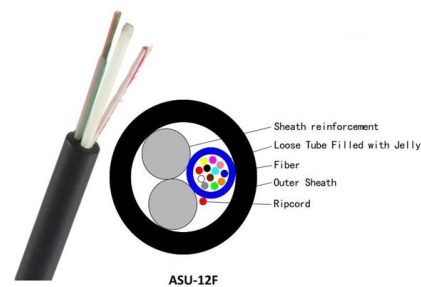


Discover how to stay connected with loved ones from Mongolia. Tips on local carriers, eSIM, calling apps, and backup solutions for optimal connectivity.

### Telecommunications in Mongolia

Overview  
Telecommunications infrastructure  
Telephones  
Radio  
Television  
Internet  
Further reading  
External links

Telecommunications in Mongolia face unique challenges. As the least densely populated country in the world, with a significant portion of the population living a nomadic lifestyle, it has been difficult for many traditional information and communication technology (ICT) companies to make headway into Mongolian society. With almost half the population clustered in the capital of Ulaanbaatar, most landline technologies are deployed there. Wireless technologies have had greater success in rural areas.



### What Are Distribution Boxes and Their Functions in

Understand the role of distribution boxes in fiber optics. Learn about their components, types, and functions in protecting and managing fiber optic



**EFFICIENT FIELD TERMINATION**

- 1. PREPARE** - Strip and clean the fiber
- 2. INSERT** - Fast and easy insertion
- 3. LOCK** - Secure connection achieved

**No Polishing | No Epoxy**

Eliminates cable excess length and pigtail splice storage.  
Designed for high-efficiency onsite installation.

## Xarilczan xolboony` zoxiczuulax xoroo

2024-05-27 Key indicators Economic indicators  
Telecommunications network Mobile network  
Fixed telephone service Broadband Fixed  
Internet Service Postal Multichannel distribution  
service Read more



## Mongolian communication base station inverter grid connection

First, on the basis of in-depth analysis of the operating characteristics and communication load transmission characteristics of the base station, a 5G base station of virtual power plants



## Technical Specifications for Outdoor LT Distribution boxes with

Scope: The scope of this specification covers Weather / Vermin proof LT distribution boxes (LTD) with controllers, MCCB, MCB, Bus bars, Contactors, CT's, Energy Meter, LT gas filled fixed capacitor, DC



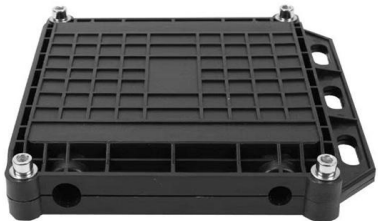


## Important Information

This chapter contains instructions on how to perform hemodialysis with two needles, using the AK 96 dialysis machine. The chapter begins with how to start the machine and continues with how to attach

## Flush-Mounted Breaker Box Solutions for Mongolia's

Flush-mounted breaker box solutions for Mongolia's electrical installations, offering reliable power distribution and space-efficient integration for



## Types of Distribution Boxes Explained with Applications & Functions

These Boxes eliminate chances of short circuits by distributing electricity in the right portions and serve as the load centre and distributor of electrical power.

## Post & Communication

Post & Communication The history of Mongolian communication started from 13th century. The Genghis khans developed the postal service. Mongolian modern telecommunication history started in 1898





## Mongolian DDish TV-provider.. Find make of the set-top box via

I am currently in Mongolia, where I have DDish satellite tv. I want to find the make of the DDish set-top box, so I can integrate it into my smart home-solution.

## Type approval , COMMUNICATIONS REGULATORY COMMISSION

There will be 2 types, and the information and communication equipment included in the "List of products and services to be included in the guarantee of conformity" approved by Appendix 1



## Information and Communication Technology Policy in Mongolia

The transition to a market economy has changed Mongolia with the economic strategy of the country more focused on first priority issues, rather than on the issues of the use of information and

## Quality Fiber Distribution Box & FTTH Distribution Box

China leading provider of Fiber Distribution Box and FTTH Distribution Box, Cixi Anshi Communication Equipment Co.,Ltd is FTTH Distribution Box factory.



## MAXINCOM MUC1004 ADMINISTRATOR'S MANUAL Pdf Download

WEB Interface Configuration PBX IP PBX has the same web interface. This chapter describes web configuration of PBX. The PBX contains an embedded web server to set parameters by using the

### Size determination, installation method and wiring mode

The distribution box is the central hub of the home circuit and the general control of our daily power consumption. It is an indispensable electrical equipment. If there



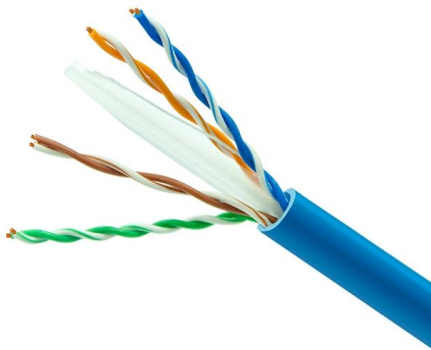
### Safe & Efficient Power Distribution Boxes , GEYA

GEYA offers a range of distribution boxes, including: MCB Distribution Boxes: GYB1 (metal), GYB4 (modular), GYB5 (transparent), and GYB8 (large capacity) series



## Mongolia CRC Updates Certification Rules for Telecom & ICT

Updates Mongolia On 13 February 2026, Mongolia's Communications Regulatory Commission (CRC) officially implemented the Regulation for Certification of Information and Communication Technology



## Telecommunication Zone Distribution Boxes

Features: The Zone Distribution Box functions as a telecommunication Consolidation Point (CP) or Multi-User telecommunication Outlet box (MUTO). This enclosure,

## Mongolia CRC Updates Certification Rules for Telecom & ICT

The update strengthens Mongolia's mandatory and voluntary conformity assessment framework for radio and communications equipment, with a clear emphasis on human health



## Telecommunications in Mongolia

Telecommunications in Mongolia  
Telecommunications in Mongolia face unique challenges. As the least densely populated country in the world, with a significant portion of the population living a nomadic



## Mongolia type approval

Mongolia Regulatory Approval Overview The Communications Regulatory Commission (CRC) of Mongolia is the government body responsible for regulating and overseeing telecommunications,



## Mongolia CRC issued new Type Approval Regulatory guidelines for

On Aug. 19th, 2019 Communications Regulatory Commission of Mongolia (CRC) issued Resolution No. 29 regarding the Type Approval Regulatory guidelines for Information and

## MONGOLIAN GRID DATA

Relay protection and system automation settings In addition, some databases such as asset information and technical specification are being





## Installation and Operating Instructions Ethernet interface option for

The Ethernet interface parameters listed here are for all peripherals identical to whom the balance can communicate with. This section gives an overview of all parameters.

## Understanding the Mongol Communication Systems in Historical

Discover how Mongol communication systems, including relay networks, signaling methods, and the Yam system, provided the strategic edge that fueled the Mongol Horde's success.



## Updated requirements for communication equipment in Mongolia

Mongolia's Communications Regulatory Commission (CRC) has now implemented the Regulation for Certification of Information & Communication Technology Equipment, approved under

## Setting communication parameters

Communication port settings such as baud rate (bit/s), data length (data bit), stop bit, parity, etc. can be set as a Windows OS standard function. However, serial communication parameters are generally



## Contact Us

---

For datasheets, pricing, or custom telecom energy solutions, please visit:  
<https://koskolong.co.za>