



Adam Tas Corridor Energy

Parameters of Explosion-proof Distribution Box in Mali





Parameters of Explosion-proof Distribution Box in Mali

Explosion-proof illumination (power) distribution box



Adopting one-time die-casting process, the surface is smooth, the appearance is beautiful, the internal structure is high in density, the impact resistance is strong, and the explosion-proof performance is

Explosion proof Enclosures and Distribution Boxes

For more information on our range of explosion proof enclosures and distribution boxes please click on the links above or contact us at ex@warom.ae



Distribution box solutions for explosion-proof environments in

At the Magnus platform, stainless steel distribution boxes weren't just protecting against explosions - they were combatting constant saltwater corrosion. Engineers specified special low-nickel alloys to



Explosion proof distribution box standards and installation issues

All components and technical parameters need to comply with the national standard GB7251



design requirements, sample production needs to be notified to the construction unit, supervision,



Explosion proof Distribution Boxes HLDP03-M Malaysia

Explosion proof Distribution Boxes HLDP03-M Malaysia Zone 1 and Zone 2 Zone 21 and Zone 22 Meet the necessities in the following industries, such as petroleum,

Explosion-proof distribution box: the "invisible guard" protecting

Ordinary distribution boxes may become a safety hazard in high temperature, corrosive or flammable environments. The explosion-proof distribution box uses explosion-proof, anti



Model and Specification of Explosion-Proof Distribution Box

Explosion-proof lighting distribution boxes and cabinets come in a variety of models. They vary in terms of materials, including metal and flame-retardant plastic; installation methods, such as





BXM(D)58 Explosion-Proof Distribution Box for Hazardous Areas

BXM (D)58 explosion-proof distribution box for hazardous areas, designed for safe power distribution in Zone 1 and Zone 2 environments. Custom sizes, flexible cable entries, IP65/IP66 protection, and



How to Wire an Explosion-Proof Distribution Box and

Explosion-proof electrical equipment, such as explosion-proof distribution boxes, is specifically designed for hazardous environments where flammable gases,

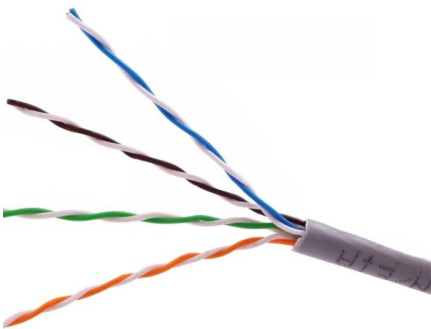
Explosion Proof Illumination Distribution Boxes (With

Flameproof and explosion proof, these power overhaul distribution boxes are suitable for use in hazardous areas. Specs: Ex mark: Ex de IIC T4 Gb DIP A21 TA,T4



HLDP03-Series Explosion-proof Distribution Boxes Exporter China

Home >> Products >> Explosion Proof Electric Apparatus >> HLDP03-Series Explosion-proof Distribution Boxes



Full Guide on Explosion-Proof Distribution Panel

Explosion-proof distribution panels are vital components in hazardous industrial environments, ensuring safety by preventing electrical equipment from igniting



IP66 Explosion Proof Distribution Boxes for Hazardous Areas

Shop high-quality IP66 explosion proof distribution boxes for safe and reliable electrical installations in hazardous areas. Find durable, customizable solutions now.

Ex-Proof & Flameproof Enclosures & Junction Box , Supermec

All explosion-proof enclosures, lighting or power distribution boxes are manufactured using the latest technologies, both mechanical and electrical, using materials able to resist in most highly corrosive

Pre-Terminated Patch Panel

- Standard 19" width
- Max 144 fibers in 1U
- Ultra-High Density Ready



Dual-tail, easy install & maintain



Lightweight ABS fiber optic cassette



Premium sheet metal with matte coating



Explosion Proof Power Distribution Boxes CE92

Flameproof and explosion proof, these power overhaul distribution boxes are suitable for use in hazardous areas. Specs: Ex mark: Ex de IIC T4 Gb DIP A21 TA, T4

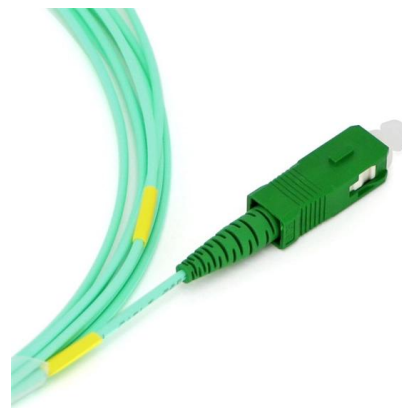


Explosion-proof junction box, explosion-proof distribution box use and

It is a junction box with explosion-proof function through various explosion-proof transformations. Explosion-proof junction box electrical equipment must be connected to the power supply network

Energy Distribution

BARTEC offers one of the most extensive ranges of explosion-proof and substance-resistant components, devices, and systems for controlling, switching, and



Explosion proof Power Distribution Panel Box

Power Distribution panel box - Hazardous locations for explosive gas mixtures: Zone 1 and Zone 2. Explosive gas mixtures: Class IIA, IIB, and IIC.



Distribution Boxes and Empty Enclosures

Boxes and Empty Enclosures Distribution Boxes
BXM(D)S1 Series Explosion-proof Illumination
(Power) Distribution Boxes (Ex de IIB)



Technical Specification for Explosion Proof Cabinets: A Guide

Developing a precise technical specification for explosion proof cabinets is fundamental for safety and operational integrity in hazardous environments. These specifications dictate the



CE92 Explosion-proof power distribution boxes

CE92 Explosion-proof power distribution boxes
Category: ATEX Junction Boxes



Explosion-Proof Electrical Distribution Boxes: Applications in

Explosion-proof electrical distribution boxes are essential for safety in hazardous environments. These specialized enclosures are built to contain internal explosions and stop the ignition of flammable



HRMD91 Explosion proof Distribution Box (Ex d IIB+H2)

HRMD91 Explosion proof Distribution Box
Explosion protection to - IEC - CENELEC - NEC
Can be used in Zone 1 and Zone 2 Zone 21 and Zone 22 Class I, Zone 1

Explosion Proof Device Box Factory

MINMILE Operates As Explosion Proof Device Box Factory And Supplier, Producing Compact Protective Housings Enabling Safe Device Integration In Harsh Fields.



Explosion-Proof Distribution Box , Product Center

Explosion-proof distribution boxes are designed to safely control and distribute electrical power in hazardous environments, preventing ignition risks.



High-quality ceramic ferrule



Contact Us

For datasheets, pricing, or custom telecom energy solutions, please visit:
<https://koskolong.co.za>