



Adam Tas Corridor Energy

Pengbai Core Switch Configuration Table





Pengbai Core Switch Configuration Table

huawei switch cheat sheet · GitHub

Check the ARP table: Use the command "display arp" to view the ARP table of the switch. This will show you the IP addresses and MAC addresses



FS Community

Hier sollte eine Beschreibung angezeigt werden, diese Seite lässt dies jedoch nicht zu.



Typical DHCP Configuration

S300, S500, S2700, S3700, S5700, S6700, S7700, and S9700 Series Switches Typical Configuration Examples (V200) This document provides campus networks typical configuration examples and

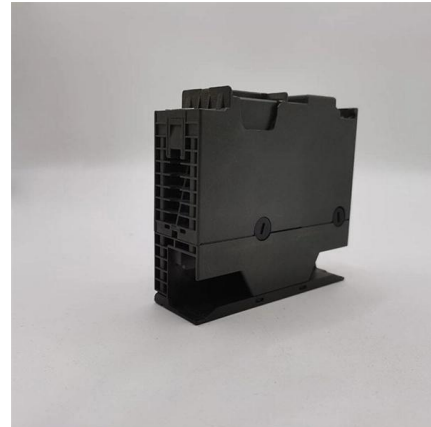


Huawei eNSP Command Reference Guide

This document provides summaries of commands for configuring routing, VLANs, link



aggregation, and other features on Huawei networking devices.



Stacking and High Availability Configuration Guide, Cisco IOS XE

Stacking and High Availability Configuration Guide, Cisco IOS XE 17.18.x (Catalyst 9300 Switches) First Published: 2025-07-31

Switch box configurations. , Download Table

Download Table , Switch box configurations. from publication: A hierarchical test scheme for system-on-chip designs , System-on-chip (SOC) design methodology



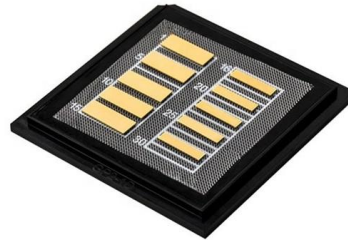
Example for Configuring a Layer 3 Switch to Work with a Router for

Example for Configuring a Layer 3 Switch to Work with a Router for Internet Access Layer 3 Switch Layer 3 switches provide the routing function, which indicates a network-layer function in the OSI



Configuring the Core Switch

In this scenario, IP addresses of the interfaces connecting the core switch to the BRASs and firewalls and OSPF need to be configured on the core switch, so as to implement connectivity



Switch Configuration on Cisco Packet Tracer

Here, you will learn Cisco switch configuration on Cisco Packet Tracer. We will focus on packet tracer switching commands together.

Cross-Platform Network Mastery: Unifying Switch Configurations for

Cross-Platform Network Mastery: Unifying Switch Configurations for Huawei, H3C, Ruijie, and Cisco Introduction: The Universal Language of Network Engineering In a world where enterprises operate



Layer 3 Switch Example

Layer 3 Switch Example Last updated Dec 1, 2025 Save as PDF Table of contents Initial Topology Configuring the Layer 3 Interfaces Configuring the Switch Ports Additional Considerations Switch



Huawei Switch Configuration Guide , PDF , Network

The document provides detailed steps and examples for completing common switch configuration tasks.



Hardware Configuration , hiddenswitch/ComfyUI , DeepWiki

Hardware Configuration Relevant source files
comfy/cli_args.py comfy/cli_args_types.py
comfy/controlnet.py comfy/lora.py
comfy/model_management.py
comfy/model_patcher.py

Huawei Switch Configuration Guide , PDF , Internet

The document provides configuration instructions and commands for basic switch configuration using Huawei switches. It covers topics such as changing the





Core Switch Configuration

Core Switch Configuration Table of contents
Configuring VRRP Standards Network
Engineering Cell Site Configuration Core Switch
Configuration THIS PAGE IS A FORGOTTEN WORK
IN

ECS5520 Series CLI Reference Guide

Section III "Appendices" -- Includes information on troubleshooting switch management access. This guide focuses on switch software configuration through the CLI. For information on how



Basic Cisco Switch Configuration Example in 10 Steps

Unlike other lower class switch vendors (which are plug-and-play), the Cisco switch needs some initial basic configuration in order to enable management, security

ECS2100 Series Web Management Guide

Section III "Appendices" -- Includes information on troubleshooting switch management access. This guide focuses on switch software configuration through the web browser. For information on how to



Introduction to Core Switch Configuration

In this switching, transmission is determined not only by MAC address (layer 2 bridge) or source/destination address (layer 3 routing), but also by TCP/UDP (layer 4) using port Numbers that



Configuring Aggregation and Access Switches to Be Managed by the

Configuration Roadmap Access devices downstream to the core layer can automatically go online through Zero Touch Provisioning (ZTP). This section describes three automatic deployment modes,



Configuring PBR

A firewall connects to core switch SwitchA in bypass mode to ensure security of traffic exchanged between servers and the Internet. Then all traffic passing through SwitchA is redirected to the firewall



Configuring the Core Switches to Be Managed by the Controller

To manage a core switch on iMaster NCE-Campus using commands, you need to connect the core switch to iMaster NCE-Campus first and then enable the NETCONF function.



Huawei Switch Configuration Guide , PDF , Network

This document provides instructions for configuring Huawei switch commands. It discusses starting a configuration session, viewing different configuration modes,

Huawei Switch Configuration Tutorial Basic

Huawei Switch Configuration Tutorial: System-View sysname Switch-1 , user-interface vty 0 4 , set authentication password cipher P@ssw0rd



Contact Us

For datasheets, pricing, or custom telecom energy solutions, please visit:
<https://koskolong.co.za>