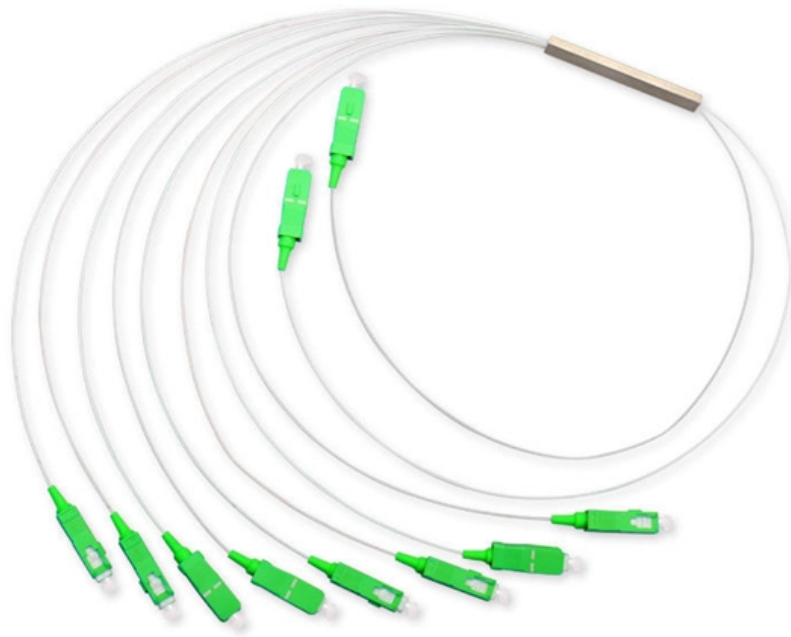




Adam Tas Corridor Energy

Performance Comparison of Best-Selling Dense Wavelength Division Multiplexers and Delays





Performance Comparison of Best-Selling Dense Wavelength Division



Wavelength Division Multiplexers (WDM)

Explore the fundamentals of Wavelength Division Multiplexing (WDM), its types, benefits, challenges, and future prospects in our detailed guide.

Performance Analysis and Comparison between Coarse WDM and Dense WDM

Performance Analysis and Comparison between Coarse WDM and Dense WDM Avizit Basak a, Md. Zargis Talukders & Md. Rakibul Islam r Abstract - Although optical fiber communication is the best



DENSE WAVELENGTH DIVISION MULTIPLEXING (DWDM)

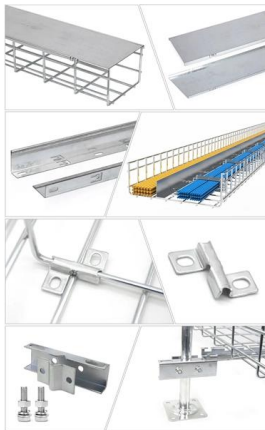
Dense Wavelength Division Multiplexing, or DWDM for short, refers originally to optical signals multiplexed within the 1550-nm band so as to leverage the capabilities (and cost) of erbium doped

High-performance Si-based on-chip wavelength division

We present a novel multi-channel wavelength division (de)multiplexer (WDM) with



unprecedented compactness and efficiency. To be more precise, our WDMs with four, five, and six



Wavelength division multiplexing

The library also features studies on components critical to WDM systems, such as optical filters, multiplexers, and photodetectors, along with insights into system integration and performance

An all-fiber dense wavelength-division multiplexer/demultiplexer using

The device consists of an all-fiber Mach-Zehnder interferometer with photoinduced Bragg gratings. The following performances were measured: extraction/coupling efficiency =99.4%, excess loss <0.5 dB,



CWDM and DWDM explained

CWDM vs DWDM explained: key differences and when to use each Wavelength Division Multiplexing (WDM) allows multiple data streams to be transmitted



Comparative Analyses of Dense Wavelength Division

We present the performance analysis of 112 Gb/s×4 wavelength division multiplexing (WDM) 100 GHz channel spacing polarization division multiplexed-differential quadrature phase shift



Dense Wavelength Division Multiplexer

Description The GKER Photonics GK-BPDWDM Series Dense Wavelength Division Multiplexer (DWDM) is engineered to deliver high performance in demanding optical network applications.

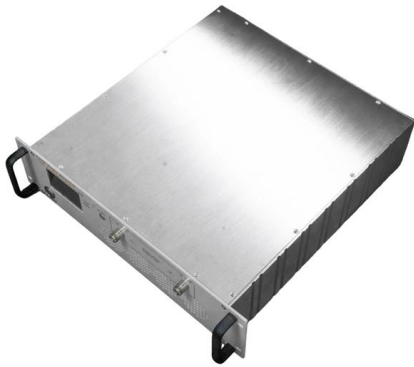
Wavelength-Division Multiplexing Network

Known as wavelength division multiplexing (WDM) and later dense wavelength division multiplexing (DWDM), this technique has driven the total bandwidth capacity of a single fiber from a



Performance optimization of Band Pass Filters and Wavelength

Abstract The growing demand for compact, high-speed, and spectrally precise components in next-generation communication systems poses significant challenges in the design



Dense wavelength division (de-)multiplexer for space application

Dense wavelength division multiplexing techniques are widely used in terrestrial state-of-the-art telecom applications. The optical link between the terminals requires a data rate in the



Wavelength Division Multiplexers (WDM)

Wavelength Division Multiplexing (WDM) is a technique in fiber-optic communication systems that enables multiple optical signals with different wavelengths to be combined, transmitted, and

Wavelength Division Multiplexers from CWDM/DWDM

CWDM Multiplexers - Coarse Wave Division Multiplexing uses up to 18 wavelengths in a fiber pair and is suitable for shorter distances, max. 120 km. DWDM





High-Performance Wavelength Division Multiplexers Enabled by Co

Here, we develop a novel design approach that co-optimizes inverse-designed wavelength division multiplexers and distributed Bragg gratings to achieve ultra-low crosstalk without compromising

Advancements in Wavelength Division Multiplexing for High-Capacity

Wavelength Division multiplexing a core technology for increasing the capacity and performance of optical networks. This is called wavelength-division multiplex.



Dense Wavelength Division Multiplexing (DWDM)

Dense wavelength division multiplexing (DWDM) employs multiple light wavelengths to transmit signals over a single optical fiber. Today, DWDM is a crucial component of optical networks because it

High-Performance Wavelength Division Multiplexers

Here, we develop a novel design approach that co-optimizes inverse-designed wavelength division multiplexers and distributed Bragg gratings to



Design and performance analysis of 1.28Tbps ultra

In the work presented here, the performance of the target 128-channel UDWDM-NRZ scheme under such degradations is analyzed, shedding

High-Performance Wavelength Division Multiplexers Enabled by Co

Wavelength division multiplexers are fundamental to the functioning and performance of integrated photonic circuits, with applications ranging from optical interconnects to sensing and quantum



Wavelength Division Multiplexers (WDM) Selection

How To Select Wavelength Division Multiplexers
Image Credit: Microwave Photonic Systems Inc.
Wavelength division multiplexers (WDM) are electronic devices that





Dense Wavelength-division Multiplexing

Dense wavelength-division multiplexing (DWDM) revolutionized data transmission technology by increasing the capacity signal of embedded fiber. This increase means that the incoming optical

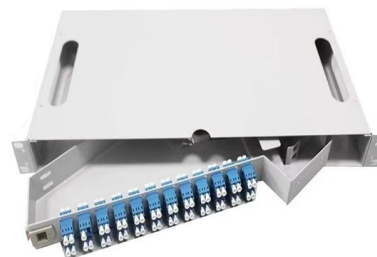


Comparative Analyses of Dense Wavelength Division Multiplexing and

Both DWDM and CWDM systems were compared using the quality factor (QF), eye-opening factor (EOF), optical signal-to-noise ratio (OSNR), and received optical power (ROP). Both

Wavelength division multiplexers and some experimental analysis in

Based on research and comparison, wavelength division multiplexing technology has the advantages of easy reconstruction and good scalability. Still, problems such as immature technology of some



[2509.07233] High-Performance Wavelength Division Multiplexers

Here, we develop a novel design approach that co-optimizes inverse-designed wavelength division multiplexers and distributed Bragg gratings to achieve ultra-low crosstalk without



Comparative Analyses of Dense Wavelength Division Multiplexing and

Both DWDM and CWDM systems were compared using the quality factor (QF), eye-opening factor (EOF), optical signal-to-noise ratio (OSNR), and received optical power (ROP). Both simulation



(PDF) Performance evaluation of the dense wavelength

In this paper, reconfigurability in the dense wavelength division multiplexing system is analyzed with the placement of digital switches by varying the bit rate from 10



Wave Division Multiplexers , WDM, CWDM, DWDM

These wavelength division multiplexers enable fiber optic networks to mux or demux multiple wavelengths through the same fiber. Each wave division multiplexer,





Fiberdyne Labs, Inc. Dense Wave Division Multiplexers



Dense Wave Division Multiplexers (DWDMs)
Introduction: Dense WDM (DWDMs) provide the ability to expand fiber capacity by allowing you to combine or

dense wavelength-division multiplexing (DWDM)

Learn how dense wavelength-division multiplexing (DWDM) dramatically scales bandwidth by combining up to 80 channels over a single pair



Contact Us

For datasheets, pricing, or custom telecom energy solutions, please visit:
<https://koskolong.co.za>