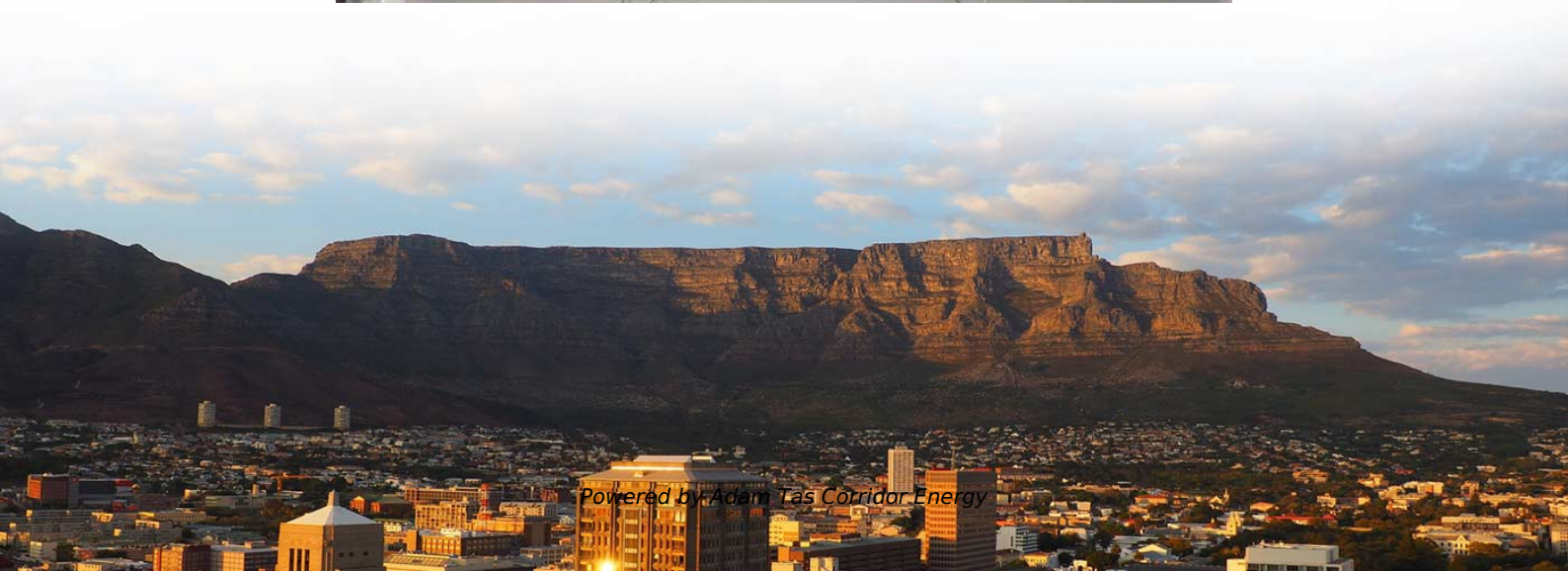
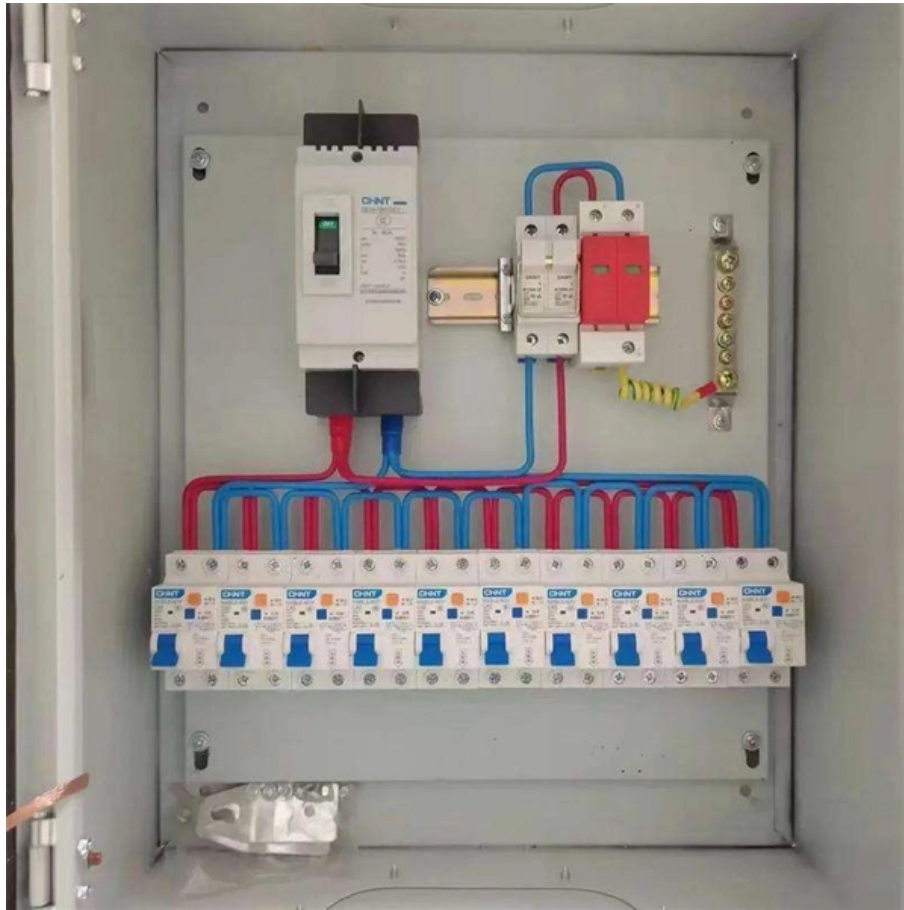




Adam Tas Corridor Energy

Petrochemical Standard Cable Tray Support Frame





Petrochemical Standard Cable Tray Support Frame



IEEE 1242: Guide for Specifying and Selecting Cable for

The guide provides specifications for selecting cables in petrochemical plants, addressing unique industry challenges. Key cable specifications include

Use of Cable Trays in Oil and Chemical Refineries

Cable trays are important for industrial cables in Oil and Chemical Refineries for a variety of reasons, including supporting cable management systems and protecting cables. Hutaib



Do You Know Cable Trays in the Petrochemical Industry

When working in the petrochemical industry, one question always arises: how do we ensure our cable trays support safety and efficiency? Cable



Cables

Cables should be installed in conduits, trays, or aerial supports according to their design and environmental conditions. Following detailed



specifications and



Performance-based optimum seismic design of cable tray system

In the paper, the drift ratio between adjacent supports is proposed as a performance index and the acceptable threshold values are specified based on experimental results of shaking table

Cable Tray

Cable Tray Cable trays are mechanical support systems that provide a rigid structural system for electrical cables, raceways, and insulated conductors used



TECHNICAL AND SIZING DATA

100% Canadian Owned, CSA and UL certified. Complete technical support and service for Unitray product lines. Custom sizing and non-standard tray lengths are available. Interchangeable with other



Document DICOS

Do not use a cable tray as a walkway, ladder, or support for people; a cable tray is a mechanical support system for cables and raceways. Using cable trays as walkways can cause personal injury and can



Petrochemical Applications

Our MT modular support system for light- and medium-duty cable trays and cable ladders offers easier installation, greater flexibility and more adjustability for corrosion areas.

Cables

Pur-pose Cable for Petroleum and Chemical Plants. This standard addresses wire and cable design, materials, testing, and installation, along with illustrations of typical construc-tions and application



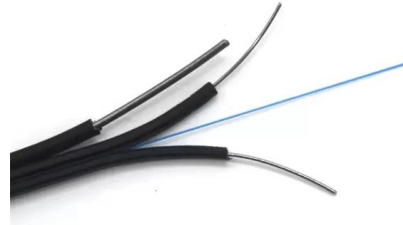
Best Practice Guide to Cable Ladder and Cable Tray Systems

Introduction This publication is intended as a practical guide for the proper and safe* installation of cable ladder systems, cable tray systems, channel support systems and associated supports.



Basor Electric

With more than 30 years of experience, BASOR supplies all kinds of cable trays for electricity, instrumentation and communications



Pipe Rack Modules: Fabrication, Transportation, and

Fabrication of Pipe Rack Modules Pipe racks are structural units that support pipes or cable trays used to transport liquids, gases, or cables between different

Pre-engineered Modular Pipe Rack

Pre-engineered modular pipe racks are structures designed and





RECOMMENDED SPECIFICATIONS OF JUNCTION BOX AND CABLE TRAY

The design standard for junction boxes and cable trays in the offshore projects is based on applicable industry standards, regulations, and classification requirements.

Petrochemical White Paper Part 1

This paper reviews various cable tray materials by weight, strength, durability, and protection against corrosion when used in both off-shore and land-based petrochemical facilities.



Vessel tray systems

We are an industry leader in petrochemical cable support systems. By reviewing your petrochemical project vessel design specifications, we can manufacture "ready to install" Vessel Tray Systems to

CABLE MANAGEMENT SYSTEMS FOR THE PETROCHEMICAL

In most petrochemical facilities, the cable management system alternatives are either cable tray or conduit installations. When comparing these two systems, it is important to take the problem of



Cable Tray for Oil & Gas Facilities

Explore durable cable tray systems engineered for oil & gas facilities, offshore rigs, and marine environments. UL-classified Snap Track trays with ABS certification,

Pipe Bridges , Pre-engineered Modular Pipe Rack

Pre-engineered modular pipe racks are used to support pipes, power cables, or instrument cable trays in petrochemical, chemical, or power plants. In some



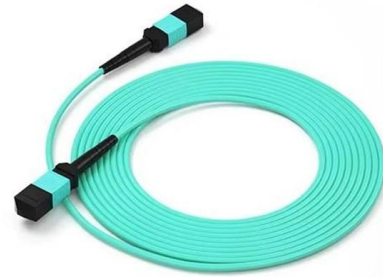
Pentax Ferro Incorporate

Pentax cable support systems consisting of wide range of Cable trays (Ladder & Perforated) with accessories including supports (for ceiling, wall mounting & floor



Petrochemical White Paper Part 2

This paper considers the various for cable management systems at each stage of the process -- upstream, midstream, and downstream. While the needs vary at each process stage, we find the



Main Pipe Rack

A main pipe rack is defined as a structural system that supports and routes interconnecting process pipelines and utility headers through a plant area, facilitating the transportation of process and utility

Full cable tray systems specification document

B. Cable tray systems are defined to include, but are not limited to straight sections of [ladder type] [trough type] [solid bottom type] [channel type] cable trays, bends, tees, elbows, drop-outs, supports



Guide to cable support systems

The basis for the recommendation is not the standard load capacity of the brackets, as tested according to DIN-EN 61537, but rather the realistically occurring loads of a standard cable support system.



Cable Tray Systems for petrochemical industry

These infrastructures can be fixed to the ocean floor as an artificial island with or without connection. For the exploration of crude oil and natural gas using offshore platforms, many companies in the sector



Beama Best Practice Guide , Installation Of The System , Cable

The following recommendations are intended to be a practical guide to ensure the safe and proper installation of cable ladder and cable tray systems and channel support and other support systems.

Cable Management Support Systems

Cable Support Systems are well designed to provide necessary support for cable trays, cable ladders and trunkings. Cable supports are manufactured according to





Cable trays

We offer a wide range of cable tray systems to support tubing, electrical cables and instrumentation. Our cable trays are produced in fit for purpose materials like

How to Cable Trays for Oil & Chemical Plants

A practical guide to selecting cable trays for refineries & chemical plants. Covers standards (API, IEC), material selection (SS 316L, FRP, HDG),



Cable Tray SHIB NAL

Overloading cable trays can lead to a breakdown of the tray, its connecting points, and/or supports, causing hazards to persons underneath the cable tray and even leading to possible electric shock

Pipe Rack Design Guidelines

Multiple engineering disciplines work together to finalize a pipe rack design. multiple engineering disciplines work together to finalize a design.



(PDF) Design-of-Structural-Steel-Pipe-Racks

Pipe racks are structures in petrochemical, chemical and power plants that are designed to support pipes, power cables and instrument cable trays. They may



Cable Trays in Specific Industries: Petrochem & Nuclear

Explore special Cable Trays in Specific Industries like Petrochemical & Nuclear Power. Learn how they handle corrosion, fire, radiation, seismic risks,



Cable Tray for Petrochemical Plants

Discover industrial cable tray systems engineered for petrochemical plants, refineries, and processing facilities. Learn about corrosion-resistant Snap Track cable tray solutions, technical specifications,





SABP-007 Steel Piperack Design

The guidelines require the consideration of the piping or cable trays separately from the structural members. The following calculations are only for piping and cable trays without the



Unistrut Cable Tray Support Structures

Cable Tray systems are often used to support electric power, signal, control, instrumentation, and communication cables used for power distribution and

(PDF) Design of Structural Steel Pipe Racks

Pipe racks are structures in petrochemical, chemical and power plants that are designed to support pipes, power cables and instrument cable trays. They may



Contact Us

For datasheets, pricing, or custom telecom energy solutions, please visit:
<https://koskolong.co.za>