



**Adam Tas Corridor Energy**

# **Photometric power meter for red and green light**





## Photometric power meter for red and green light

---

### Budget Intensity Measurements for Red Light Therapy

Budget Intensity Measurements for Red Light Therapy Part 1 of 3: Tenmars TM-206 How can we measure intensity from red light therapy panels



### Optical Power Meters

Benchtop optical power meters provide accurate measurements of optical power and energy by reading the output of calibrated optical sensors. Our benchtop optical power and energy meters are plug and



### Photometer

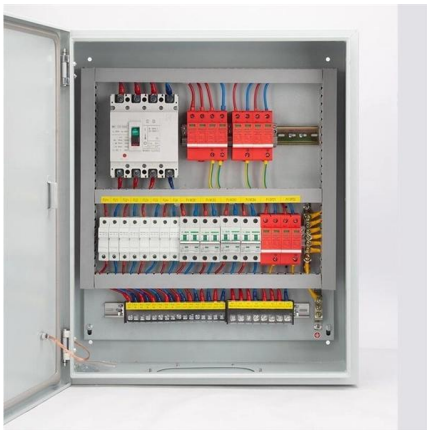
7.5.1 Photometers From the definition of photometric units and its relation to eye response, photometric measurements will be appropriate when evaluating a light source or lighting from the point of view of

### Laboratory Light Measurement

These meters provide long term accurate measurements for both low and high intensity



lamp systems, in order to enable proper output and aging determination.



## Photometers

Typical photometric units include lumen, lux, and candela. In order to have also a well defined photometer, an "artificial eye" has been constructed to simulate the light sensitivity of the human eye.

## MSC15 Spectral Light Meter Gigahertz-Optik

With over 30 different light, spectral, color quantity & actinic measurements, this versatile light meter for LED and other light sources can work precisely for you in



## Understanding the Units for LED Output

Essentially, it quantifies how much the source illuminates a surface and is measured in terms of Lux (lx), or lumens per square meter (lm/m<sup>2</sup>).  
Figure 2: Plot shows



## Common photometric quantities and units

Radiometry studies the absolute power of the electromagnetic radiation (that also includes light). In contrast, photometry considers the eye's response



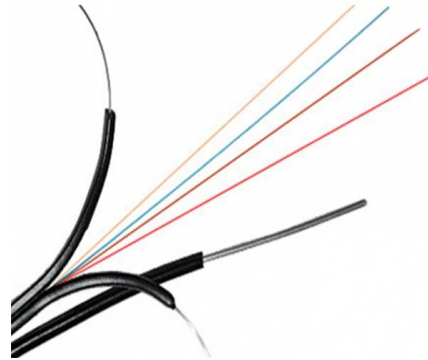
## Light Meters

Edmund Optics offers a wide range of Light Meters suited for many light measurement needs. Light Meters are available in a number of different effective



## Lighting Metrics Explained: Choosing the Right

As the height of the grow lamp above the canopy increases, light intensity decreases while light distribution angle increases. Lighting



## Luminous efficiency function

Photopic (black) and scotopic (green) luminous efficiency functions. [c 1] The photopic includes the CIE 1931 standard [c 2] (solid), the Judd-Vos 1978



## Microsoft PowerPoint

The lumen (lm) is the photometric equivalent of the watt, weighted to match the eye response of the "standard observer". Yellowish-green light receives the greatest weight because it stimulates the eye



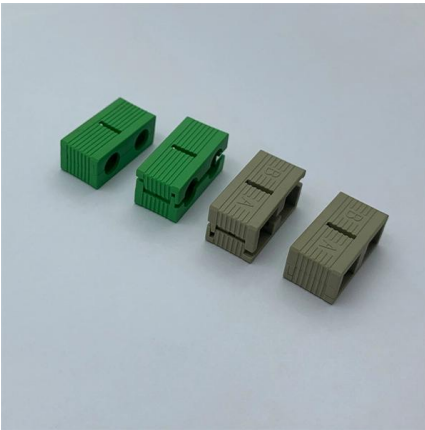
## Photometer

Photometers measure light in photometric units. The simple photodiode discussed above can be converted from a radiometer to a photometer by replacing the filter in front of it with a specific

## Photometry - perceived brightness, human eye,

Photometry is the science and technology of quantifying and measuring properties of light related to its perceived brightness for human eyes.



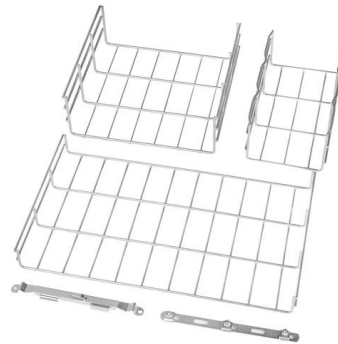


## Photometry (optics)

Photometric measurement is based on photodetectors, devices (of several types) that produce an electric signal when exposed to light. Simple applications of this

## Photometer

Light quality is often measured by a spectroradiometer, which is designed to measure the spectral power distribution of a light source. From the spectral power distribution, the characteristics of a light source



## Laboratory Light Measurement

Solarmeter® Visible Light Meters (400-700 nm)  
The OL 730E is a microprocessor-controlled, high sensitivity radiometer/photometer that can be programmed to read directly in any user-specified

## Graphics and CAD Programs

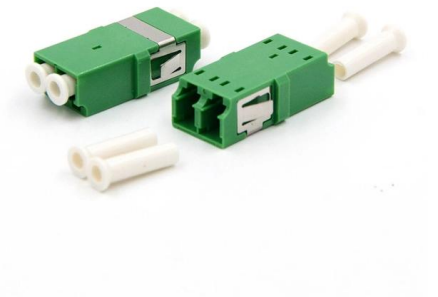
Hier sollte eine Beschreibung angezeigt werden, diese Seite lässt dies jedoch nicht zu.





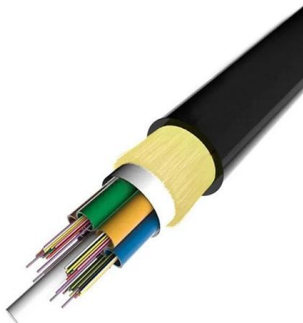
## Master Lighting Design: Understand Radiometric vs. Photometric

For photometric data, tools like photometers and lux meters measure light intensity in lumens. For radiometric data, radiometers or spectroradiometers are used to measure total energy



## Spectral Light Meters for Photometric and Colorimetric Measurements

Comprehensive range of spectroradiometers for the measurement of illuminance (lux),



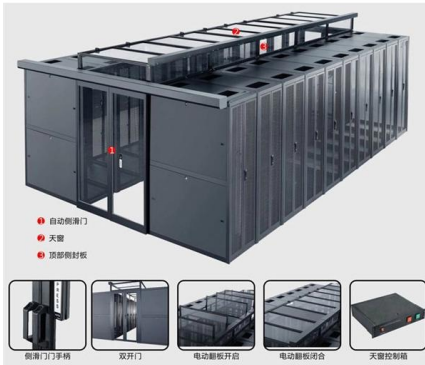
## Photometry

ILT offers photometric light measurement instruments that are unmatched in accuracy, sensitivity, & versatility for photopic and scotopic applications.

## Y3 Handheld Optical Power Meter & Red Light Pen All

The Y3 Handheld Optical Power Meter & Red Light Pen combines precision testing and fault locating. Ideal for FTTH, CATV, and network





## Spectral Light Meters for Photometric and Colorimetric Measurements

Spectral Light Meters for Photometric and Colorimetric Measurements Comprehensive range of spectroradiometers for the measurement of illuminance (lux), luminance ( $\text{cd}/\text{m}^2$ ), luminous flux

## Light Meter: Amazon

Save on Light Meters and Photometers at Amazon's Lab Consumables Store, featuring every day low prices on Lab & Scientific Equipment.

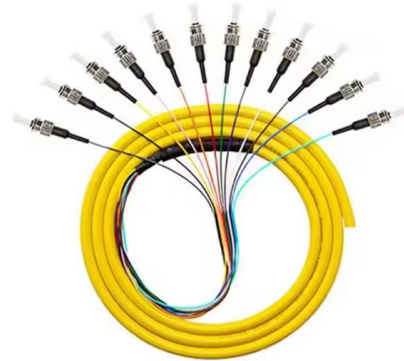


## Photometric quantities: Photometric standards for

Photometric quantities are fundamental concepts in lighting technology that measure the power and distribution of light when analyzing light sources. The luminous

## Photometers & Colorimeters

A photometer is used to measure the photometric quantities of illuminance (lx), luminous intensity (cd), luminous flux (lm), and luminance ( $\text{cd}/\text{m}^2$ ). The integral



### **Spectra Candela III Traffic Signal Light Tester**

The Spectra Candela III Traffic Signal Light Tester measures luminous intensity and light output degradation of Red, Yellow and Green LED signal modules in order to



### **Recalibrated Solar Power Meter for Accurate Intensity Measurement**

Recalibrated Solar Power Meter for Accurate Intensity Measurement of Red Light Therapy Panels! GembaRed LLC 7.95K subscribers  
Subscribe



### **Lumu Power: an impressively accurate iOS light meter**

RedShark Review: Slovenia's Lumulabs is a small operation that develops the Lumu Power light meter, a hardware sensor combined with an iOS





## Contact Us

---

For datasheets, pricing, or custom telecom energy solutions, please visit:  
<https://koskolong.co.za>