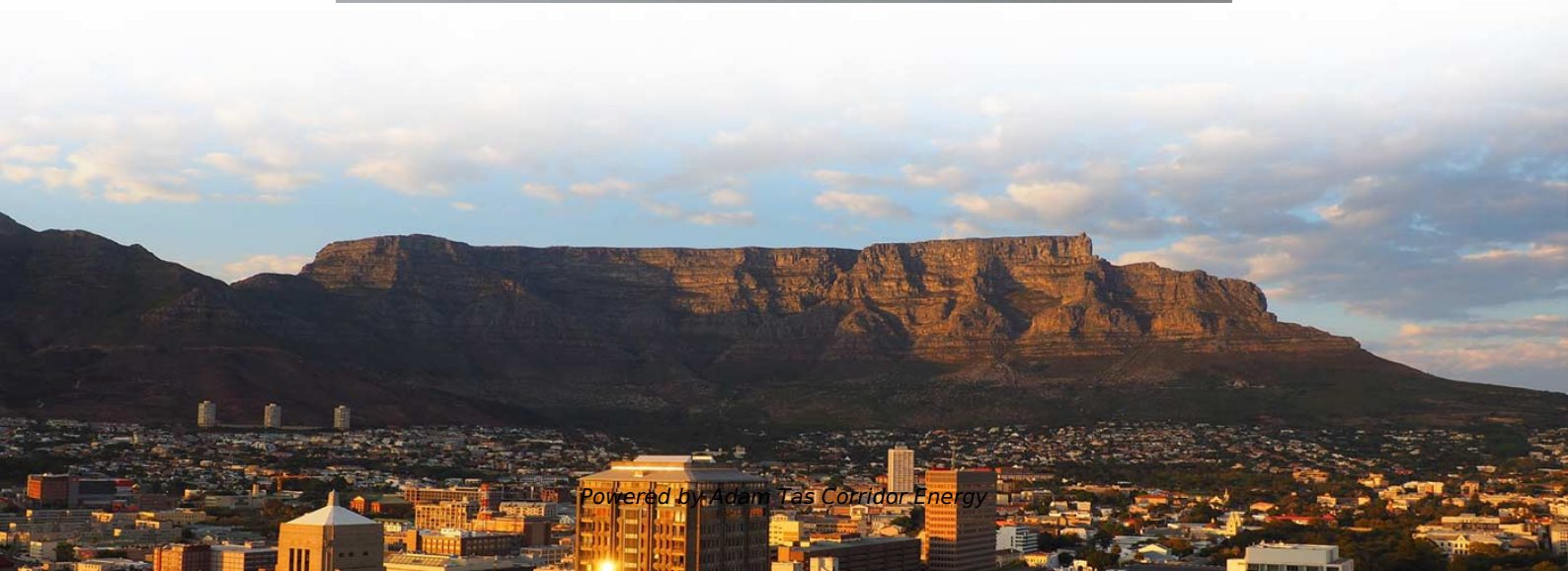




**Adam Tas Corridor Energy**

# **Plastic Tail Fiber Channel Dimensions**





## Plastic Tail Fiber Channel Dimensions

---



### RBJ Plastics - Carbon Fibre Tube

Carbon fibre telescopic profiles are typically stocked in 3 metre lengths in black. Longer lengths are available upon request.\* As a UK manufacturer and pultrusion company we are able to tailor

### Custom Plastic Channels , Plastic U Channels, Profiles & Molding

Made-to-Order Plastic Channels with Flexible Production Support At Inline Plastics, every part we produce is custom-made. Each plastic extrusion project is built to match your exact specifications,



### The FOA Reference For Fiber Optics

By installing a "cable" which is just a bundle of empty plastic tubes, you can "blow" fibers into the tubes using compressed gas as needed. If you need to upgrade,

### Shaxon

Shaxon Fiber Optic Duct Channel is made from fire-retardant plastic for safe cable management. Durable and reliable--contact us today to place your order.



### **BuildOpt(TM) Terminal System Assembly - PPC**

After mounting the TSA, the installer simply pays out the desired length of fiber tail, utilizing the supplied pulling eye. The pre-terminated tail can then connect to any



### **Custom Plastic Channels**

Preferred Plastics is proud to be a leading manufacturer of custom plastic channels used in a range of industries, including C, H and U-channels. Request a quote!



### **FiberRunner 6x4 Routing System**

a p p l i c a t i o n s The FiberRunner® 6x4 Routing System is a system of channel, fittings, and brackets designed to segregate, route, and protect fiber optic and high performance copper cabling. It is suited



## Plastic PVC All Channel

The table below lists all of the standard extruded plastic channel profiles in width order, as some functions can be satisfied with channels of different leg length or design.



## Data Sheet

The HFBR-C/R/EXXYYYYZ series of plastic fiber optic cables are constructed of a single step-index fiber sheathed in a black poly ethylene jacket. The duplex fiber consists of two simplex fibers joined with a

## FIBER CLOSURE AND TERMINAL QUICK REFERENCE CHART

FIBER CLOSURE AND TERMINAL QUICK REFERENCE CHART ER CLOS AND TERMI QUICK REFERENC



## Plastic PVC Capping Channels

Plastic PVC Capping Channels in different shapes, sizes and also in a range of colours. Supplied by TP Extrusions.



## Fiberglass Channels , McMaster-Carr

Choose from our selection of fiberglass channels, including over 14,800 products in a wide range of styles and sizes. Same and Next Day Delivery.



## Fiber patch panels

The Fiber Optic Patch panel 19 inch standard structure, rack mounted, suitable for 19" frame rack mount or cabinet, designed for backbone-to-backbone and backbone-to-horizontal fiber cabling.

## JIS Channel Dimensions and Weights

The document provides specifications for various JIS channel profiles including their thickness, dimensions, weights, radii, cross-sectional properties, and material



## Plastic PVC & Carbon Fibre Profiles , Plastock

Suppliers of PVC, HDPE, PPH, GRP & Carbon Fibre Profiles Plastock offers an extensive range of extruded plastic PVC, HDPE, PPH, GRP and carbon fibre profiles including Angle Trims, Plastic



### POF Basics: Size and Bandwidth

For many communication applications, it may be desirable to use duplex POF cable, which consists of two fibers for separate transmit and receive channels in a zip



### FRP Channels , Fiberglass Channel, Structural Channel

Use FRP channels for ladder rails, step stringers, horizontal supports, stair treads, pedestrian bridges and girders. Contact us for a quote!

### FiberRunner 12x4 Routing System

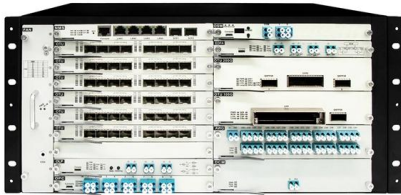
ling a p p l i c a t i o n s The FiberRunner® 12x4 Routing System is a system of channel, fittings, and brackets designed to segregate, route, and protect fiber optic and . igh performance copper cabling.





## Plastic Channels , McMaster-Carr

Choose from our selection of plastic channels, including over 550 products in a wide range of styles and sizes. Same and Next Day Delivery.



## Reel Dimensions

Optical Fiber Specifications Fiber Optic Cable Color Coding Reel Capacity Calculator Cable Termination Transportation and Storage Reel Dimensions Truck Load

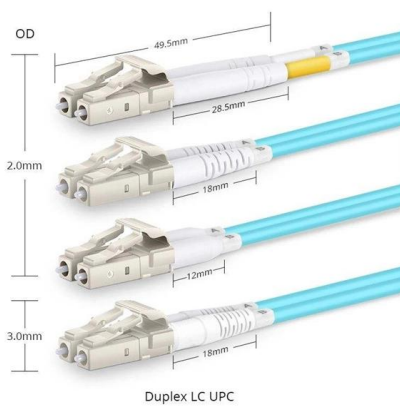


## Plastic Channel Manufacturers , Plastic Channel Suppliers

Plastic channels are formed with different shapes according to the type of die used during extrusion; U-, H-, L-, C-, and J-channels are the most common ones.

## The relationship between optical cables, terminal boxes, and tail fiber

In fiber optic communication systems, optical cables are used to transmit light signals over long distances. Terminal boxes are used to connect and protect the fiber optic cables at various

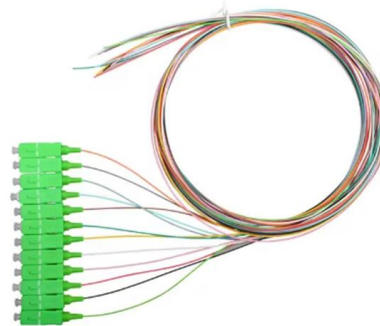


## Fibre Channel Cabling

Fibre Channel Cabling This webinar is for anyone with questions concerning cabling in a Fibre Channel environment, specifically those who are directly or indirectly responsible for SAN cable

## Tail Fiber: Types, Functions, and Common Interfaces

Similar to fiber optic jumpers, tail fibers are classified into single-mode and multimode types, differing in color, wavelength, and transmission distances. Generally, multimode tail fibers are



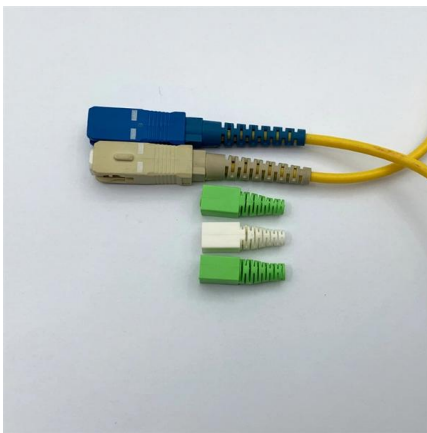
## Plastic Channel

Plastic Channels come in many different shapes and sizes, and have multiple uses, as Capping, Sliding Track, Edging trim and more.



## Spools and Reels Technical Product Line Card

DIN spools and large process reels are also used for magnet wire High speed winding oOptional foamed barrel surface to minimize stress on fibers



## FibreFab-Fibre-Optic-Cable-Catalogue

FibreFab Established in 1992, FibreFab is a leading provider of fibre optic connectivity products used in data communications and Telecommunication networks. The Company designs, develops,

## QUICK REFERENCE CHART

RODUCT DIMENS. 5748 - 4.826mm) 108 All specifications subject to change without notice.  
© 2023 Channell C. mmercial Corporation. All rights .



## Custom Plastic Channels , Plastic U Channels, Profiles & Molding

Our team works with clients across industries to develop plastic U channels, custom profiles, and channel extrusions that meet exact performance and fit specifications.



### **FRP Channels Catalog Type & Feature & Application & Specification**

FRP channel is mainly used to insulated handrails and roof supports, because of anti-corrosion, insulation and economic benefits. The simple steps are fiberglass roving, dipped in resin, preforming,



### **Contact Us**

---

For datasheets, pricing, or custom telecom energy solutions, please visit:  
<https://koskolong.co.za>