



Adam Tas Corridor Energy

PoE switch A B connection





Overview

When you examine the ends of your Ethernet cable, you'll notice eight metal stripes - these are the pins.



PoE switch A B connection



NVT Phybridge Power over Ethernet Networking Solutions

NVT Phybridge Power over Ethernet Networking Solutions

An Illustrated Guide to Rj45 Poe Wiring

Learn how to wire an RJ45 connector with Power over Ethernet (PoE) using a wiring diagram and step-by-step instructions.



Power over Ethernet (PoE) Pinouts Guide

Understanding the pinouts for PoE is essential for correctly wiring and troubleshooting network devices. This guide will cover the various PoE pinouts required for different standards.

Power over Ethernet (POE) pinout signals @ PinoutGuide

A midspan power supply, also known as a PoE power injector, is an additional PoE power source



that can be used in combination with a non-PoE switch. Standards-based Power over



Power over Ethernet Technology Overview

Power over Ethernet (PoE) is technology that passes electric power over twisted-pair Ethernet cable to connected devices, such as wireless access points, IP

Ubiquiti Store United States

Precision-timed AV switching with 10G ports, 100G uplinks, & PTP sync support



Configuring Power over Ethernet

The switch monitors and tracks requests for power and grants power only when it is available. The switch tracks its power budget (the amount of power available on the device for PoE). The switch



Beginner Guide-How to Use PoE (Power over Ethernet)

To use the PoE injector, you power the injector first, use a Cat5 Ethernet cable to connect the network switch and the injector and use another cable to connect the



Power over Ethernet (PoE)

PoE is being used in many of today's wired and wireless connectivity applications saving both time and money. Many communication devices are now being designed with PoE interfaces such as wireless

Installing and Troubleshooting Power over Ethernet (PoE)

This is typically a PoE-enabled network switch but can also be a midspan injector used in instances where the switch is not capable of supplying power. Twisted



Power over Ethernet (POE) pinout signals @ PinoutGuide

Power is supplied in common mode over two or more of the differential pairs of wires found in the Ethernet cables and comes from a power supply within a PoE-enabled networking



Beginner Guide-How to Use PoE (Power over Ethernet)

By using a PoE switch, you can mix PoE and non-PoE devices in the same network, while the regular switch fails to do so on its own. However, the regular switch can

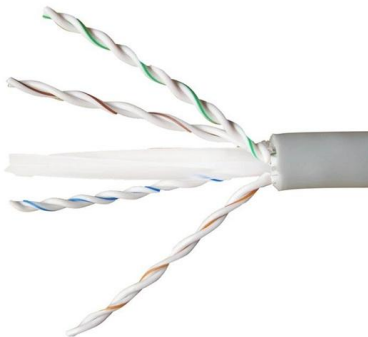


PoE Modes (Power over Ethernet)

Power is inserted into the Ethernet cable by either an Ethernet switch or a PoE injector. An injector takes the existing Ethernet data cable at its input, adds the power and then its output is the data and power

Power over Ethernet (PoE) Pinouts Guide with Cable Colors

Power over Ethernet (PoE) is a technology that enables Ethernet cables to carry electrical power along with data, simplifying the installation of devices such as IP cameras, VoIP

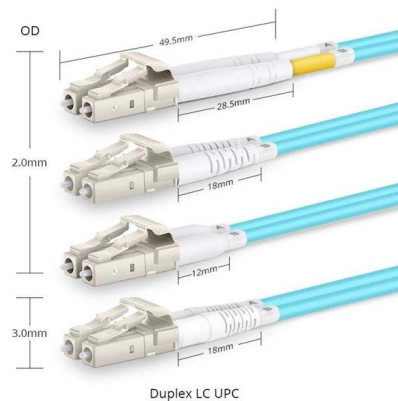


Configuring Power over Ethernet

The switch detects a Cisco prestandard or an IEEE-compliant powered device when the PoE-capable port is in the no-shutdown state, PoE is enabled (the default), and the connected device is not

A Comprehensive guide to PoE Switches and their Uses

PoE switches work by injecting electrical power into the Ethernet cable, ensuring that connected devices receive both data connectivity and power from a single source.



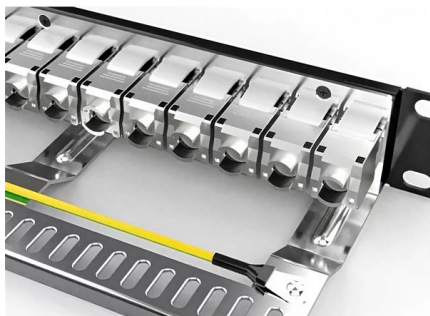
Power over Ethernet (PoE) Explained: PoE Standards

Explore different PoE standards and wattage levels to power devices efficiently. Unlock smarter networking with the right PoE switch today!



POE mode A and mode B pinouts.

Older, slower networks use Mode A, while newer network cabling uses Mode B. We will also review 802.3bt type 3 and 4 pinouts for units receiving more than 30



Mode B vs. Mode A: What's up with that?

That's just the way it is. Devices that are powered with 48 or 56 volt PoE will almost always power up in Mode A or Mode B, but for the sake of

The Definitive Guide To Power Over Ethernet , PoE

The perfect solution for your power-hungry devices, our 24 Port Gigabit Unmanaged PoE Switch delivers reliable and lightning-fast connectivity without the hassle of



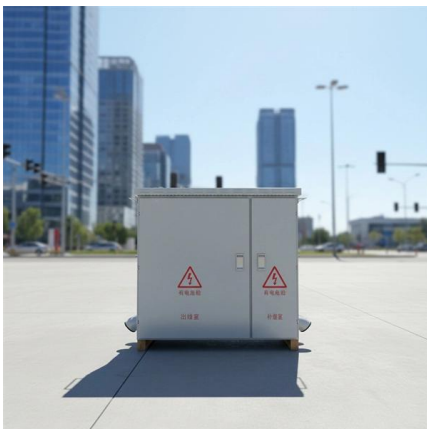


Power over Ethernet (PoE) Pinouts Guide

Power over Ethernet (PoE) is a technology that enables Ethernet cables to carry electrical power along with data, simplifying the installation of devices such as IP cameras, VoIP

Intro to Networking

Overview This article will cover the basics of Power over Ethernet (PoE). PoE streamlines the process of powering and providing data to a connected device by



What is a PoE Switch

Network switches form the backbone of any Local Area Network, or "LAN" (pronounced "lan") for short. On this page you will learn what differentiates

PoE Pinout Explained and Wiring Guide

Understand what is PoE pinout with this comprehensive guide. Learn about Mode A/B, wiring best practices, and PoE standards. Read on!



PoE

Varianten der Energieversorgung bzw. Energiequelle Der Standard IEEE 802.3af beschreibt einen Verbraucher, das Powered Device (PD), und die Stromquelle,

Power over Ethernet (PoE) Installation Best Practices

Power over Ethernet (PoE) Installation Best Practices Written by Don Schultz, trueCABLE Technical Manager, Fluke Networks Copper/Fiber CCTT,

Motor protection controller



Diagram for Wiring a Poe Switch

Learn how to wire a Poe switch with a comprehensive diagram, helping you set up Power over Ethernet connectivity for your network devices.



Power over Ethernet

In this configuration, an Ethernet connection includes Power over Ethernet (PoE) (gray cable looping below), and a PoE splitter provides a separate data cable



Contact Us

For datasheets, pricing, or custom telecom energy solutions, please visit:
<https://koskolong.co.za>