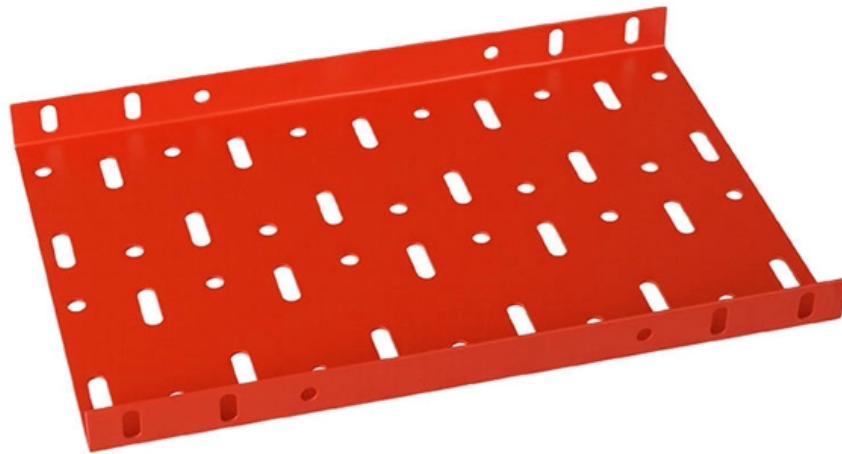




Adam Tas Corridor Energy

PoE switch management IP





Overview

Open installed web browser on your PC, input the switch's IP address like, then open that URL to login web management. This Quick Start Guide is designed to guide you through installation and includes warranty terms. Browser as a universal access tool, uses the HTTP protocol to communicate with switch directly. Learn how to configure your Managed PoE Switch in this quick tutorial! Discover how to set up the IP address, access the WEB Management interface, and adjust key settings such as port, PoE, link aggregation, and VLAN. The topology view allows you to remotely access, manage and monitor all discovered IP devices in your product's network, for example via a tablet or a smart phone. The device does not receive redundant power when it is only connected to the PoE port.



PoE switch management IP

STEAMEMO PoE+ Switch, 8 Port Managed PoE Ethernet Switch (8 POE



Smart Management - Control Your Network from Anywhere: STEAMEMO 8 ports PoE+ switch Manage your network effortlessly with web interface, desktop software, or mobile app. Monitor real-time traffic, prioritize devices with QoS, and configure VLANs (802.1Q) for better security.

Managed PoE Switch Setup Tutorial: Easy Configuration

Learn how to configure your Managed PoE Switch in this quick tutorial! Discover how to set up the IP address, access the WEB Management



Managed PoE Switch Web Management User Manual , FS

Using the onboard Web agent, you can define system parameters, manage and control the Managed Switch, and all its ports, or monitor network conditions. Via the Web-Management, the administrator

Amazon

About this item . 5 Ports Easy Managed Poe



Switch: Goalake easy managed poe+switch includes 4 managed poe ports(2*1000M+2*100M) + 1*1000M uplink



PoE Switch (16/24-port Managed Desktop Switch)

It provides a high-performance switching engine and large buffer memory to ensure smooth video stream transmission. With a full-metal design, the Device has great heat dissipation capabilities on

PoE Switch Tutorial: Simplifying Network Power

Access the PoE switch's management interface using a web browser or dedicated software. Set up essential parameters such as IP addresses,



Using the IP Address for Remote Switch Management

With your switch, you can use the switch's IP address to manage the switch from any PC that is on the same subnet as the switch. You can use either a Telnet session or a standard Web browser to



TOUGHSwitch PoE Pro TS-8-PRO Quick Start Guide

Introduction Thank you for purchasing the Ubiquiti Networks® TOUGHSwitch™ PoE Pro. This Quick Start Guide is designed to guide you through installation and includes warranty terms.



Dahuasecurity

Hier sollte eine Beschreibung angezeigt werden, diese Seite lässt dies jedoch nicht zu.

PoE+ Series Switches Enable Web Management Configuration Guide

NOTE: Although the web network management method intuitively manages the device through a graphical interface, which is convenient for users to operate, it provides basic functions for daily



AXIS D8248 Managed PoE++ Switch

Use AXIS IP Utility or AXIS Device Manager to find the device on the network. For more information about how to discover devices, go to axis.com/support. Enter



Managed Switches , Omada by TP-Link Official Store

Omada Switches are engineered to be the powerful, intelligent, and reliable backbone for any business network. As a core component of the Omada Software-Defined Networking (SDN) platform, our



Interface

When Cisco powered devices are connected to PoE ports, the switch uses Cisco Discovery Protocol (CDP) to determine the CDP-specific power consumption of the devices, and the switch adjusts the



8-Port Easy Mount Gigabit Ethernet PoE+ Smart Managed Plus Switch

This user manual describes how you can configure and operate the NETGEAR 8-Port Easy Mount Gigabit Ethernet PoE+ Smart Managed Plus Switch, Model GS408EPP, by using the local





Cisco Products: Networking, Security, Data Center

Explore Cisco's comprehensive range of products, including networking, security, collaboration, and data center technologies



Managed PoE Switches & Why They Matter

A managed PoE switch is essential for businesses looking to simplify their network management, improve security, and reduce power infrastructure costs. Whether you need cloud management,

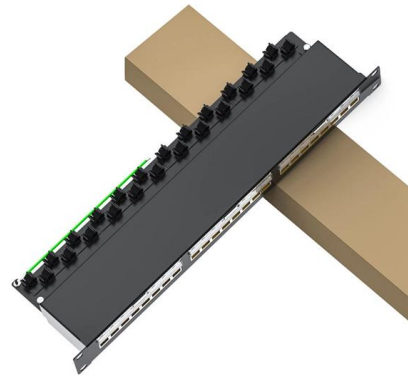


TSW202 PoE+ managed Ethernet Switch

TSW202 is a managed PoE+ Ethernet switch, designed to provide granular network management capabilities while centralising power distribution. This PoE+ switch

Managed Industrial PoE Switches

Managed Power over Ethernet (PoE) switches enable network managers to remotely access a wide range of capabilities to configure, manage, and monitor a local area network. Our managed PoE



TOUGHSwitch PoE User Guide

Note: PoE is disabled by default on all numbered ports and is not available on the Management port. To enable PoE on the appropriate ports, use the Ports tab in the Configuration Interface (see "PoE" on



Configuring Switch Management IP Address , ZyXEL PoE Switching

Chapter 5 Initial Setup Example 5.2 Configuring Switch Management IP Address The default management IP address of the Switch is 192.168.1.1. You can configure another IP address in a



Dahua Managed Gigabit PoE Switch

This Web Configuration Manual (hereinafter referred to as "the manual") introduces operations on web interface of Dahua Managed Gigabit PoE Switch (hereinafter referred to as "the Switch").





Meraki Switches

Meraki MS Switches combine enterprise-grade hardware with cloud management, allowing your organization to scale effortlessly. Explore the models.



Managed PoE Switch Setup Tutorial: Easy Configuration Steps

Learn how to configure your Managed PoE Switch in this quick tutorial! Discover how to set up the IP address, access the WEB Management interface, and adjust key settings such as port, PoE, link

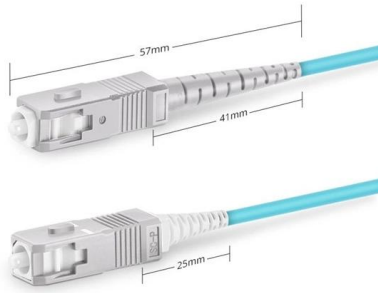
Teltonika's TSW202 managed switch for PoE management

PoE Ethernet switches are the ideal choice for those looking to simplify the management of networking solutions and minimise the number of wires cluttering



PoE Switch Tutorial: Simplifying Network Power

PoE Switch Tutorial: Simplifying Network Power Management PoE switches have become increasingly popular in both residential and commercial



Simplex SC UPC

HPE Aruba 6000 12G Class4 Poe (12 ports)

The switch is backward compatible, allowing for seamless integration into existing network infrastructures. - 12 Gigabit Ethernet ports with PoE support - Up to 30 watts per port for connected

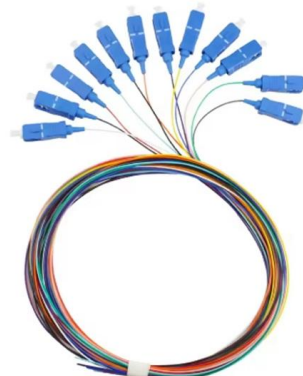


POE Management Profile

The Aruba Mobility Access Switch supports three PoE power management modes: Static Mode--The power deducted from the total power pool is the maximum power for that interface.

Configuring PoE Interfaces on EX Series Switches , Junos OS

Note: For PoE to be enabled on all PoE-capable interfaces, the configuration must include the interface all statement in the [edit poe] hierarchy level. With the exception of EX8200 switches that were





Contact Us

For datasheets, pricing, or custom telecom energy solutions, please visit:
<https://koskolong.co.za>