



**Adam Tas Corridor Energy**

# **Polarization-maintaining lens fiber optic patch cord**





## Overview

---

The LBTEK polarization-maintaining single-mode fiber patch cord ensures the polarization direction of light remains unchanged during the transmission of polarized light signals, improving coherent signal-to-noise ratio. We offer a wide range of connector types, including FC, SC, LC, MTP, and E2000, as well as AR-coated variants. Polarization Maintaining Fiber Optic Patchcords are available with FC/PC or FC/APC terminated connectors. Hybrid terminated connectors enable users to adapt FC/PC or FC/APC patchcords for compatibility with existing fiber assemblies. Available from stock, these cables feature a high-quality polish, which leads to a typical return loss of 60 dB.



## Polarization-maintaining lens fiber optic patch cord

---



### **LBTEK-Polarization-Maintaining Single-Mode Fiber**

The LBTEK polarization-maintaining single-mode fiber patch cord ensures the polarization direction of light remains unchanged during the transmission of

### **Polarization Maintaining Patch-cord**

Description Specifications Order-  
options Inquiry Description Polarization  
maintaining (PM) optical patch cords are widely  
used in polarization sensitive fiber optical  
systems for transmission of light that



### **Polarization Maintaining Fiber Optic Patchcords**

Polarization Maintaining Fiber Optic Patchcords  
are ideal for applications including beam  
delivery, telecommunications, fiber optic  
sensing. Each connector is engraved with the  
fiber type for easy



### **Polarization Maintaining (PM) Patch Cord**

Polarization maintaining (PM) fiber optic patch  
cord is built with polarization maintaining panda



fiber and connectorized by FC/UPC or FC/APC connectors.



### **780nm Polarization Maintaining Fiber Optic Connector/Patch Cord**

Product features Slow Axis Alignment? Polarization-maintaining fiber with a pair of FC/APC connectors? Wavelength range of 400-2200 nm? Narrow key (2 mm) and slow axis alignment?



### **Polarization-Maintaining FC/APC Fiber Optic Patch Cables**

These polarization-maintaining fiber optic patch cables are terminated on both ends with narrow key, ceramic-ferrule FC/APC connectors. Available from stock, these cables feature a high-quality polish,



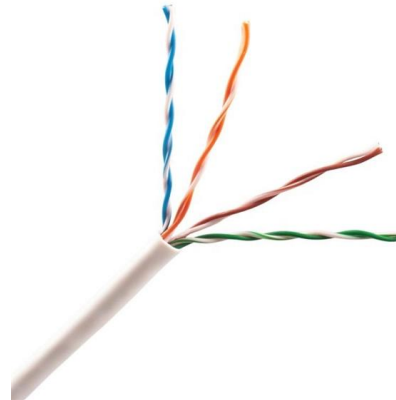
### **Polarization Maintaining Patch-cord , Optical Passive**

Polarization Maintaining Patch-cord Polarization maintaining (PM) optical patch cords are widely used in polarization sensitive fiber optical systems for transmission of



## What Is Polarization Maintaining (PM) fiber patch cables?

Today we will introduce another special fiber patch cable--polarization maintaining (PM) fiber patch cables. Definition of PM Patch Cables At the very first beginning, let's check the basic



## Polarization Maintaining Fiber Patch Cord , FiberMania

Polarization Maintaining Fiber Optic Patch Cords are designed to preserve the polarization state of light for high-precision optical systems. They feature high extinction ratios, precise axis alignment, and

## Polarization Maintaining Fiber Optic Patch Cords

SQS manufactures high-quality Polarization-Maintaining (PM) Single Mode Fiber Optic Patch Cords with consistently high extinction ratios (ER). We offer a wide range of connector types, including FC, SC,



## Polarization Maintaining (PM) Optical Patch Cord

Polarization maintaining (PM) optical patch cords are widely used in polarization sensitive fiber optical systems for transmission of light that requires the PM state to be maintained.



**REINFORCED VIRGIN  
PVC TRUNKING**

Superior Crush Resistance



<b>37.6MPA</b> Tensile Strength	<b>2856MPA</b> Elastic Modulus
<b>9.8KJ/M²</b> Impact Strength	<b>1.54G/CM</b> Density

**PM Fiber Patch Cord, Polarization Maintaining Fiber**

Polarization Maintaining (PM) Fiber Patch Cord, PM optical fiber patch cable, or PM fiber jumpers, is fabricated using polarization maintaining (PM) panda fibers and



**Customized Polarization Maintaining Patch Cord - FC, LC, MPO**

DESCRIPTION This high-performance Polarization Maintaining (PM) Fiber Patch Cord is engineered for precision-critical optical systems. Using Panda-type PM fibers and carefully aligned

**The Role of Polarization Maintaining Fiber Patch Cable in Optical**

The emergence of polarization maintaining fiber patch cable solves these problems. It can maintain the polarization state of light throughout the transmission process, thereby achieving





## High quality tensile aramid yarn

Protecting the fiber core and optical signal transmission High tensile and bending strength

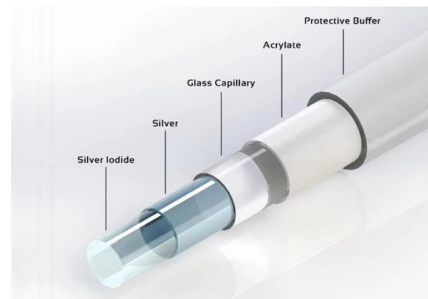


## Polarization-Maintaining Fiber Optical Patch Cables 350

These polarization-maintaining fiber optic patch cables boast industry-leading performance, including low loss, an exceptional polarization extinction ratio of

## 1310/1480/1550nm Polarization Maintaining PM Fiber

This PM fiber patch cable is widely used in fiber optic sensors, interferometers, fiber amplifiers, fiber laser systems, and quantum communication setups, where



## Polarization Maintaining PM Fiber Optic Patch Cables

FS offers polarization maintaining PM fiber patch cables with excellent birefringence and low attenuation for polarization sensitive fiber optic communication systems.

## Polarization Maintaining PM Fibre Optic Patch Leads

FS offers polarization maintaining PM fibre patch leads with excellent birefringence and low attenuation for polarization sensitive fibre optic communication systems.



### **Polarization Maintaining Fiber Patch Cord**

FIBERWDM's Polarization Maintaining Fiber Patch Cord (PM Fiber Patch Cord) are available with FC, SC, LC connector options or as a pigtail assembly, center



### **Customized Polarization Maintaining Patch Cord - FC, LC, MPO**

This high-performance Polarization Maintaining (PM) Fiber Patch Cord is engineered for precision-critical optical systems. Using Panda-type PM fibers and carefully aligned connectors, it



### **1550nm Fujikara PM Fiber Jumper Polarization**

1550nm Fujikara PM Fiber Jumper Polarization Maintaining Fiber Optic Patch Cord Precise refractive index distribution Good load-carrying symmetry



## **Polarization-Maintaining Fiber Patchcords: Precision and Performance**

Introduction In the fast-evolving landscape of photonics and optical communication, maintaining signal fidelity is paramount. Polarization-maintaining (PM) fiber patchcords have



### **PM1550nm Polarization Maintaining Fiber Patch Cord**

PM1550nm Polarization Maintaining Fiber Patch Cord FC-LC PM Panda Fiber Polarization-maintaining optical fiber transmits linearly polarized light and is

## **POLARIZATION MAINTAINING FIBER PATCHCORDS AND**

A common requirement in polarizing devices is a fiber optic patchcord assembly where two or more polarization maintaining fibers are terminated in a single ferrule, to be attached to a lens or other



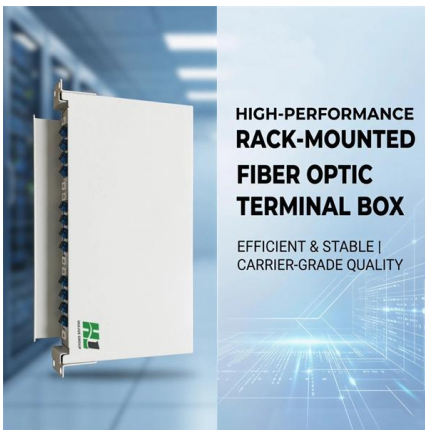
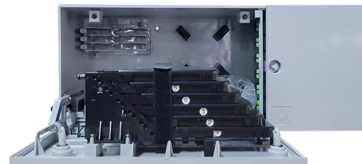
### **850nm Polarization Maintaining Patch-cord**

850nm Polarization maintaining (PM) optical patch cords are widely used in polarization sensitive fiber optical systems for transmission of light that requires the PM state to be maintained. Polarization



## Standard PM Fiber Patch Cables , Polarization

Support: (877)835-9620 Mon.-Fri. 5am - 5pm PST  
Contact Us Investors Return Policy Careers Check  
Order Status Visa/MasterCard Accepted



## Polarization Maintaining High ER Patchcord, FC/APC, 0.12NA, 970

High Extinction Ratio Polarization Maintaining (PM) Fiber Optic Patchcords are pre-terminated with FC/PC, FC/APC, and hybrid options, with typical extinction ratios between 30 - 33dB. Shop now with

## Polarization Maintaining Patchcord

Specification Polarization Maintaining Patchcord  
GEZHI Polarization Maintaining (PM) patchcords are based on a high precision butt-style connection technique.





## **Polarization Maintaining (PM) Fiber Patch Cables**

Polarization maintaining (PM) optical patch cords are widely used in polarization sensitive fiber optical systems for transmission of light that requires

## **Contact Us**

---

For datasheets, pricing, or custom telecom energy solutions, please visit:  
<https://koskolong.co.za>