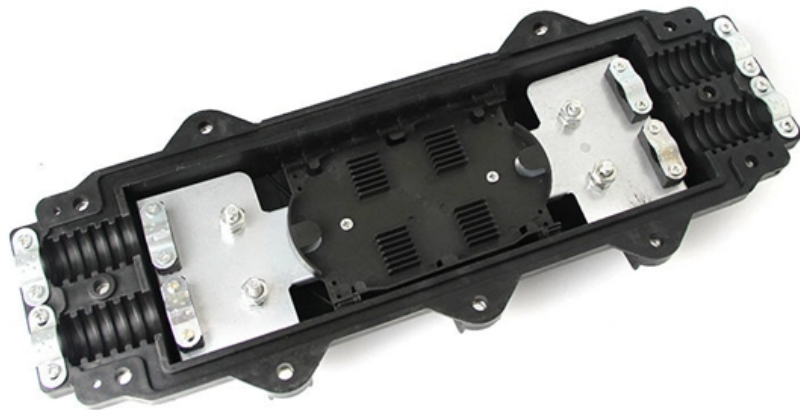




Adam Tas Corridor Energy

Power module optocoupler chip





Power module optocoupler chip



High Performance Optocouplers

This design delivers excellent noise immunity, characterized by high common mode transient immunity and power supply rejection specifications, and allows these devices to operate in noisy industrial

DONGKER Optical Isolator Module, 12V Photoelectric

DONGKER has a variety of modules, including PWM Driver Module, Optocoupler Isolation Board, Temperature Humidity Sensor Module, Voltage to Current Module, etc., with high quality and high



Optocoupler Tutorial for Beginners

An optocoupler (or opto-isolator) is a component that transfer signals between circuits using light. In this guide, you'll learn how they work and how you

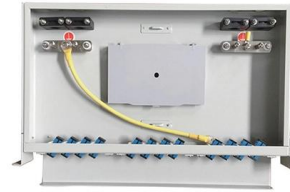


Application Note 5401

An IPM (smart, intelligent or integrated power module) combines power IGBTs (insulated gate bipolar transis-tors) and gate drivers into a single



compact package.



How to Use an Optocoupler to Pass Signals Between

How to Use an Optocoupler to Pass Signals Between Controllers at Different Voltages: This tutorial makes use of the 4N25 optocoupler chip to allow for



What is Optocoupler and How it works?

What is Optocoupler and How It Works As we have already learnt about transistors, an ideal transistor will not allow any current to pass through it if



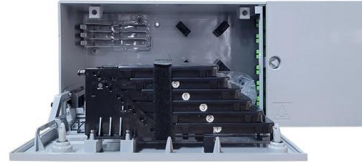
How to Build an Optocoupler Circuit

How to Build an Optocoupler Circuit In this project, we will show how to connect an optocoupler chip to a circuit. An optocoupler or optoisolator chip is a chip that



Isolating Circuits From Your Arduino With Optocouplers

Isolating Circuits From Your Arduino With Optocouplers: A Optocoupler also called a photocoupler, optical isolator or opto-isolator is a small chip that transfers signals



Understanding Phototransistor Optocouplers

In order to design a reliable application with optocouplers, it is important to understand and consider not only its main parameters, but also its

Using Opto Couplers

The main purpose of an optocoupler interface is to completely isolate the input circuit from the output circuit, which normally means there will be two completely



Optokoppler und Zubehör günstig kaufen , reichelt elektronik

Übersicht über hochwertige Optokoppler bei reichelt elektronik günstig kaufen bei reichelt elektronik Viele Marken Schnelle Lieferung günstige Preise Jetzt online bestellen!



Optocouplers 101: A Comprehensive Guide for PCB

Power Consumption: The input LED requires a specific current (often 5-10mA) to operate. Factor this into your power budget, especially in low-power

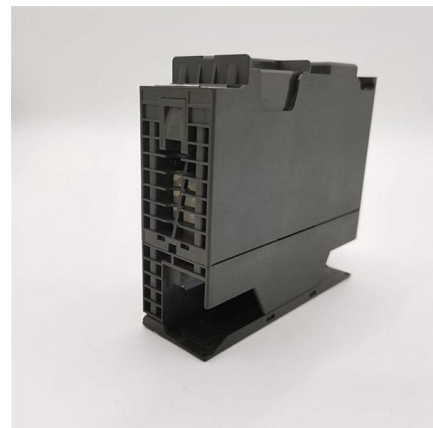


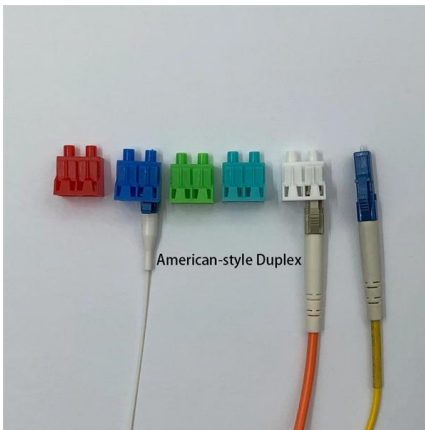
Optocoupler Circuits, Working, Characteristics, Interfacing

Optocoupler Circuits, Working, Characteristics, Interfacing Last Updated on March 15, 2025 by Swagatam 51 Comments OPTOCOUPPLERS OR

Activity: Optocouplers: [Analog Devices Wiki]

An optocoupler, or optical isolator, is an electronic device designed to transfer electrical signals by light across an electrical isolation barrier between its input





Isolators , DigiKey

Optocouplers are ideal when electrical isolation is required between control and power stages. For example, in industrial environments where PLCs or

Optocouplers and silicon-based galvanic isolation technology how do

Communication within an optocoupler occurs when an applied CMOS logic input generates an input-side current, which then creates a proportional LED output for transmission through the molding



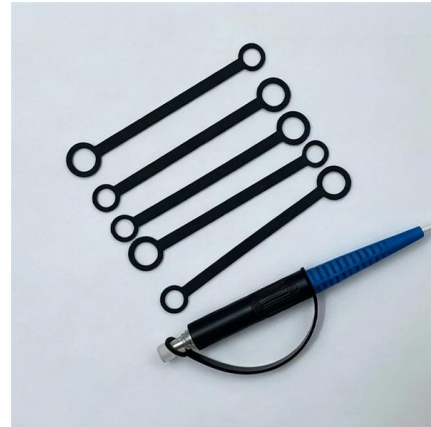
Optocoupler Isolation Module

Optocoupler isolation module with 4 channels to optically isolate circuits. This can be used, for example, to switch a high-voltage circuit with a 5V micro-controller.



Relay Modules and Optocoupler Modules , WAGO

From relay sockets to pluggable relay and optocoupler modules - WAGO delivers versatile, high-performance solutions for every application. They're perfectly



Optocoupler & Optocoupler-Solid State Relay

We also offer solid state relay-optocoupler modules that include bridge rectifiers, Darlingtons transistors, and Zener diodes. Find your solution in our Integrated



Optocoupler & Optocoupler-Solid State Relay

Optocouplers use LEDs and phototransistors to close circuits. This ensures optical isolation of integrated circuit components, making optocouplers good choices for



Optocoupler , Explore Our Workshop , Jameco Electronics

By providing a bridge between different voltage levels, optocouplers enable precise control over high-power applications without direct electrical contact. Explore



Optokoppler kaufen

Optokoppler in Top-Qualität bei Conrad Große Auswahl Zuverlässiger Versand Exzellenter Service & faire Preise Jetzt bestellen!



Optocoupler & Optocoupler-Solid State Relay

Available with 6 to 16 pins Configured as surface mount or thru hole devices Optical and on-chip galvanic isolation Solid state relay-optocoupler modules allow

IoT AC Dimmer using TRIAC & ESP32 WebServer

After soldering all these, you can solder the ESP32 raw chip. The final stage would be soldering all the through-hole components like Optocoupler IC,



Everything You Need to Know About Optocouplers in

Have you ever heard the word isolation, especially in electronics? As you might guess, isolation is a key factor when it comes to optocouplers. Isolation



Contact Us

For datasheets, pricing, or custom telecom energy solutions, please visit:
<https://koskolong.co.za>