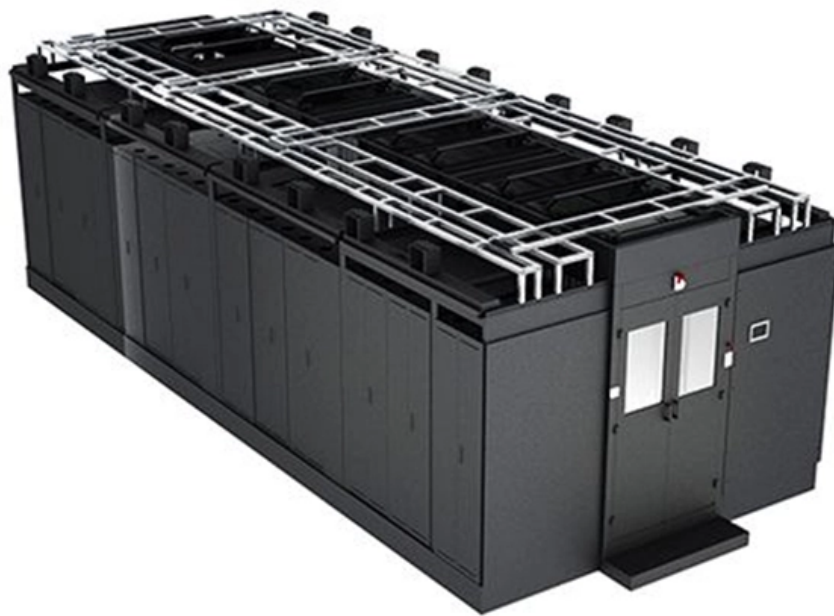




Adam Tas Corridor Energy

Power supply voltage for active beam splitter





Overview

Output voltages should be less than 200V in 10 seconds when interlock opens or "zero output" signal is sent via interface. For detailed questions regarding the performance characteristics and limitations of this product in your intended application, please click [Contact Us](#) and we will respond promptly. Mini-Circuits is a global leader in the design and manufacturing of RF, IF, and microwave components from DC to 86GHz. The supply provides high voltage for the electron beam emitter, filament power and closed-loop emission current control. Typical applications include multituner digital set-top boxes, cable splitter modules, multituners/digital cable ready (DCR) televisions, and home gateways where traditional.



Power supply voltage for active beam splitter

4 Ways Active Power Splitter, 2.4



Mini-Circuits is a global leader in the design and manufacturing of RF, IF, and microwave components from DC to 86GHz.

Development of all power supplies with a new design utilized for NBI-2

One of the main target features for the NBI-2 system is the variation of the beam energy/power into the plasma. Therefore, all of the power supplies are designed to realize real-time



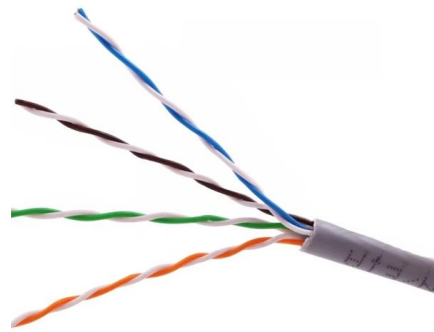
Amazon : Bawofu Active PoE Power Over Ethernet

Input Power Voltage: Power Over Ethernet
Splitter Adapter for Security Camera CCTV
Surveillance DC44-57V from poe switch or poe
injector, deliver power up



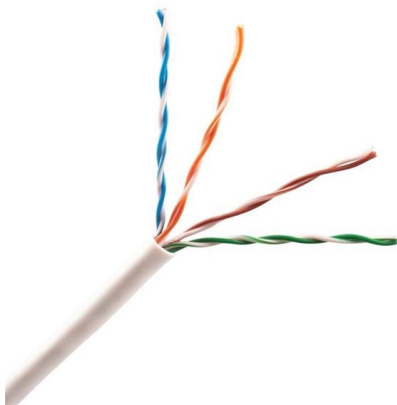
MEO Engineering Company, Inc.

Integrated High Voltage Power Supplies Broad
range of integrated positive and negative
polarity high-voltage power supplies, custom-



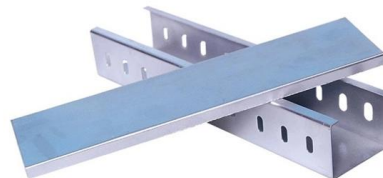
Polarization_Maintaining_Beam_Splitter_Optical_Circulator_Hybrid

ACP's Polarization Maintaining Beam Splitter/Optical Circulator (PBSC) combines the functions of a PM beam splitter and a PM circulator. It offers very low insertion loss and very high reliability.



Polarization Beam Combiner and Splitter , Fiber-Optic

Polarization Beam Combiner/Splitter Newport's F-PBC Series Polarization Beam Combiner/Splitters can be used to combine light from two PM input fibers into a



Electron-Beam Power Supplies

The Excelitas E-Gun High-Voltage Power Supply is a highly regulated power supply designed for use in an electron-beam system. The supply provides high voltage





What is a Beam Splitter?

A beam splitter or power splitter is an optical device that can split an incident light beam e.g. a laser beam into two or sometimes more beams, which may or may not have the same optical



FIBX Focused Ion Beam Power Supply

Spellman's FIBX power supply is an integrated multiple output high voltage power supply specifically designed for focused ion beam. Typical applications include transmission and scanning electron

Your Go-to Guide to Optical Splitter

The optical splitter is an optical power distribution device that splits one optical signal into multiple optical fiber signals to achieve multichannel transmission.



What Is an Optical Splitter?

Fiber optic splitter, also referred to as optical splitter, fiber splitter or beam splitter, is an integrated waveguide optical power distribution device that



Voltage rail splitters and virtual grounds for batteries and

Rail splitters were initially developed to provide dual voltage rails in battery-operated systems for components such as ADCs and sensors. More



ADA4304-4 Datasheet and Product Info , Analog Devices

The ADA4304-3/ADA4304-4 are 75 Ω active splitters for use in applications where a lossless signal split is required.

How Do Polarizing Beam Splitters Work?

How Polarizing Beam Splitter Works There are several types of beam splitters for many various applications in the world today, but this short read will concern itself



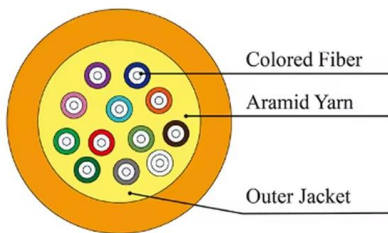


Electron-Beam-Process

Spellman high voltage power supplies come standard with Low ripple outputs, high temperature stability, standard digital interface options to choose from and most importantly, fast arc recovery to minimize

Beam splitter

A beam splitter or beamsplitter is an optical device that splits a beam of light into a transmitted and a reflected beam. It is a crucial part of many optical experimental

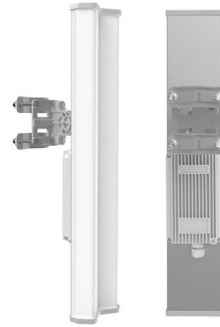


Understanding Power Splitters

Not so, fortunately with power splitters. The key parameters are influenced in the same direction during the design stage. A well-designed power

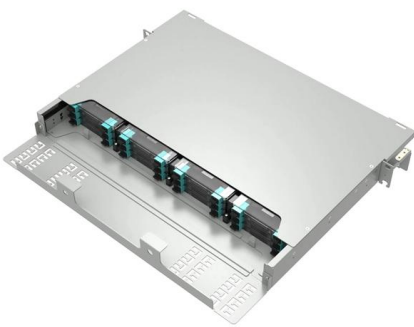
Active vs Passive Splitter -- Full Comparison , TTI Fiber

Understand the key differences between active and passive fiber optic splitters -- power, signal loss, cost, and when to use each type.



Active (Amplified-Zero Loss) L-Band Splitters

Active L-Band Splitter General Description: The LS 2150 series of active (unity gain or loss) L-band (950-2150 MHz) splitters permit simple splitting of RF signals to multiple destinations. Configurations



Electron-Beam-Process

Electron Beam Process Spellman provides modern high voltage, high power platforms to address multiple ebeam applications that require high duty cycles in rigorous environments 24/7. Spellman



Genvolt E-Beam High Voltage Power Supply For

It covers power from 100W to 2kW and voltage from 60kV to 225kV. Each unit has an inbuilt DC filament power supply and grid bias. The current of the filament and





Telemark ST Power Supply

The Telemark ST High Voltage Electron Beam Power Supply is a constant voltage, high frequency, switching power supply intended to deliver power to a single Electron Beam (EB) source which uses



APS3625 5-Way Active Splitter with One-Port Bypass 50 MHz to 1000

a single +3.3 Volt supply, the active splitter design is implemented using the GaAs MESFET process. The small surface mount QFN packaging makes this device ideal for use in home gateways

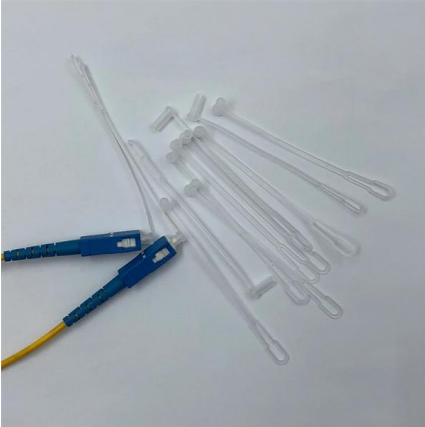
Beam Splitter

A beam splitter is defined as an optical device that effects a linear transformation of fields presented at two input ports, producing output beams that are related to the input fields in a characteristic manner



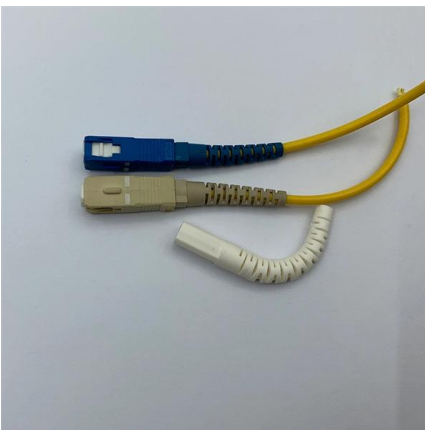
EB-04 Electron Beam Power Supply

The Model EB-04-20 is a negative-polarity Electron-Beam power supply designed for operation in Scanning Electron Microscope (SEM) with Schottky Field Emission (SFE) electron source and



Genvolt E-Beam High Voltage Power Supply For

The EB04 series e-beam power supply equipment for electron beam welding machines. Covers power from 100W to 2kW & voltage from 60kV to 225kV.



Covering the Basics of Beamsplitters -- Firebird Optics

What are Beamsplitters? Beamsplitters (also known as beam splitters or power splitters) are an optical component used to split an incident beam of

Contact Us

For datasheets, pricing, or custom telecom energy solutions, please visit:
<https://koskolong.co.za>