



Adam Tas Corridor Energy

Precautions for tightening small busbar terminals





Overview

To minimise the risk of loose connections in our electrical installations, all terminations should be tightened to the correct torque setting with a calibrated and approved torque screwdriver. It is recommended to utilize these torque values for the installations that are covered in this guide. One persistent belief is that copper busbar joints must fully overlap—matching the entire width of the bar—to ensure electrical safety and low temperature rise. This assumption is widespread in workshops, on job sites, and even during procurement reviews. Medium-voltage switchgear busbar joints operate at currents from 630 A to 4,000 A. A joint running 60°C over ambient at 1,600 A consumes roughly 400 W, enough to visibly glow under. Supposedly, someone once asked Abraham Lincoln, "How long should a man's legs be?"

" His answer: "Long enough to reach from his body to the ground.



Precautions for tightening small busbar terminals



L& T TS Manual

Each vertical panel is divided into distinct zones for busbars, droppers, auxiliary busbars, unit compartment, power cabling and control terminals Figure 2. The unit compartments houses main

Busbar connections best practices guide for reliable electrical

This guide explains how proper busbar torque specification, contact resistance, and international standards ensure safe, efficient performance in modern electrical enclosures--with



Busbar Jointing and Torque Guidelines , PDF , Screw

The document provides specifications for electrical switchgear assembly, including: 1) Tables listing recommended bar widths, lengths of overlap, bolt sizes, hole

Electrical Termination Tightness

Overview: During electrical installation work, maintenance and inspection & test, conductors are regularly terminated and/or re-terminated.



This gives rise to the risk of an incorrectly terminated



Design and installation of low voltage busbar trunking

Cable jointer not required. Busbar trunking systems may be dismantled and re-used in other areas. Busbar trunking systems provide a better



Proper torque specs and cleaning busbar and lug connections

Id get the torque value from the manufacture A quick search shows these MAXIMUM torques. Depends on bolt hardness and size, and the notes say 'lightly oiled threads' which I'm not



Achieving (and maintaining) electrical connection tightness

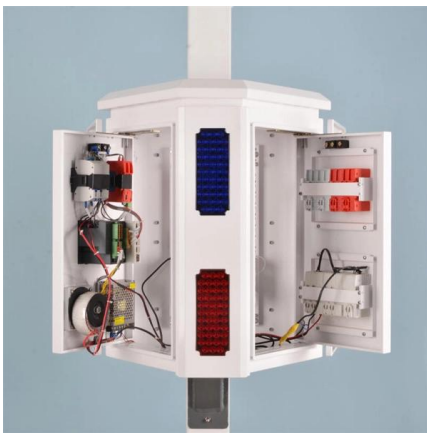
When a termination is given a tightening torque limit by the manufacturer, work to that limit, using a properly calibrated torque tool (wrench or screwdriver). Avoid con-fusing "pound-inches" with "pound





Standard Tightening Torques

Failure to follow these instructions can result in injury or equipment damage. The elastic washers placed on the external sides of the connections and busbars help ensure for distribution of stress induced by



Proper torque specs and cleaning busbar and lug connections

I have 4 stud M8 (5/16") Bus bars which connects 4/0 and 3/0 copper lugs from the LiFePo4 batteries (2 5KwH) and Inverters 2 6 Kw split phase off-grid). I wanted to know what can I

How are bus bars connected?

Learn about the different methods of connecting bus bars and how they are used in electrical systems. Get insights into the importance of proper bus



Four very important precautions for the installation of

This article deals with four significant precautions you should take - grouping conductors in parallel, short circuits, magnetic effects, operating current,



Achieving (and maintaining) electrical connection tightness

For five years, the magazine had been advocating the practice for "all current-carrying electrical terminals and joints," to achieve "a precisely determined value of contact pressure." Either



Busbar Presentation2.pdf

The document discusses busbars, which are the backbone of low voltage switchgear assemblies. It covers topics such as busbar material selection criteria, sizing

AIS manual

The Busbar compartment holds the busbar for connectivity between the switchgear and epoxy coated connection (Busbar Bushing) that is connected to VCB. The busbar extends from one switchgear





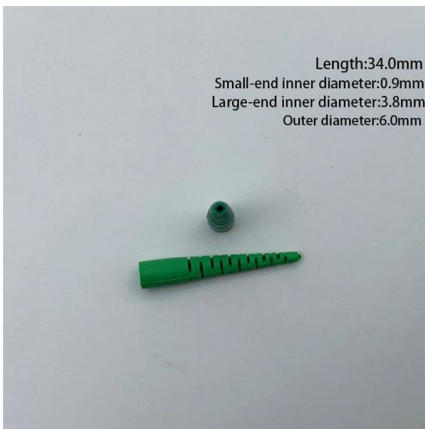
Busbars / Terminal rails

Busbars / Terminal rails Busbars / Terminal rails
Busbars In switchgears and controls, it may be necessary to bring the neutral conductor and the protective conductor together at a central point.



Optimizing Busbars for Advanced Applications

Conductor selection Busbars are ideal for the high-power applications that are commonplace in EVs. OEMs first started using busbars in EV battery packs as interconnects for battery modules. To

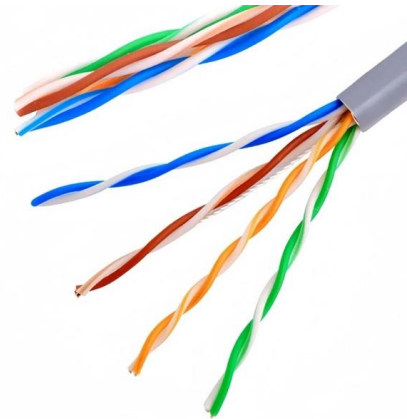


The Essential Guide to Electrical Terminal Bus Bars

Provide an in-depth look at the role, types, and applications of electrical terminal bus bars in power distribution systems. Learn how these vital

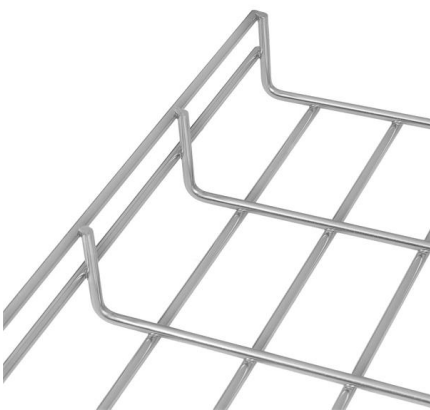
8US Busbar Systems

8US busbar systems are used for mounting current-limiting devices (protective devices), such as fuse switch disconnectors, circuit breakers and complete load feeders, directly onto busbars. 8US busbar



Electrical Termination Tightness

To minimise the risk of loose connections in our electrical installations, all terminations should be tightened to the correct torque setting with a calibrated and approved torque screwdriver. This



Four very important precautions for the installation of

Energy transport via cables and busbars First, to be clear, there are dozen of concerns and precautions you should be aware of when we talk about



What is the Tightening Torque on the Masterpact NT

Correct clamping of busbars depends amongst other things, on the tightening torques used for the nuts and bolts. Over-tightening may have the



How to Do Busbar Inspection and Maintenance on Ships?

Inspection of busbars in main and emergency switchboards on ships is important to prevent accidents caused due to electrical faults such as short circuits, fire etc. Learn how busbar



What is the Tightening Torque on the Masterpact NT

For connecting busbars (Cu ETP-NFA51-100) to the circuit breaker, the tightening torques to be used are shown in the table below. These values are

Busbar Bolted Joint Best Practices: Torque & Prevention

Busbar connections fail gradually. A properly torqued joint with clean contact surfaces carries rated current at 30-40°C above ambient. That same



Method for tightening terminal blocks

The best way to prevent any contact damage and loose connections is to avoid torquing the terminal screws while the plugs are attached to the pin headers. If available, use a torque screwdriver to



Shaping and connecting rigid busbars in low voltage switchgear

Busbars - machining, bending and shaping The busbars constitute the real "backbone" of every low voltage switchgear. The main busbar and branch busbars supply and distribute the



Contact Us

For datasheets, pricing, or custom telecom energy solutions, please visit:
<https://koskolong.co.za>