



**Adam Tas Corridor Energy**

# **Precautions for using electrical distribution boxes on construction sites**

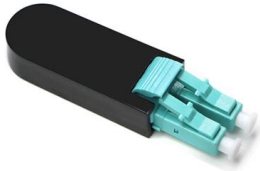




## Precautions for using electrical distribution boxes on construction s

---

### How To Maximize Worksite Safety When Using Power Distribution Boxes



Power distribution boxes are designed to be rugged, durable, and dependable in even the most challenging situations and outdoor environments. It's important to make sure you review all

### Precautions when using the distribution box-Shanghai IPKIS Power

(2) The installation positions of each distribution box and switch box of the construction power distribution system should be reasonable. The main distribution box should be as close as



### Best Practices for Installing Temporary Electrical Systems on

Installing temporary electrical systems for construction is crucial not only for operational continuity but also for ensuring safety on site. It requires careful planning and adherence to strict standards to

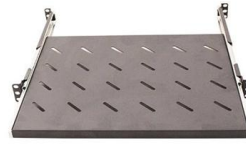


### Temporary Electrical Installations for Construction Sites

Temporary electrical installations are a crucial part of construction sites, ensuring that workers



have the necessary power to use tools and machinery. But, it's not



Webit Cabling

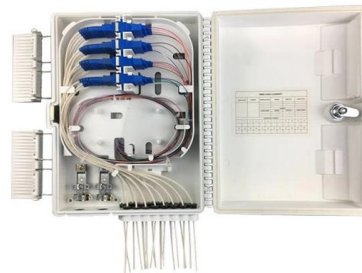


## Safety Guidelines for Temporary Power Distribution

Learn about the essential safety guidelines for temporary power distribution to protect employees from electrical hazards.

## Temporary electrical wiring for construction sites

work requires electrical power for many purposes. However, exposure to weather, frequent relocation, rough use and other conditions not normally encountered with conventional wiring systems



## Electrical Safety Tips: How to Reduce Electric Shock

Electrical hazards on construction sites refer to the several electrical risks that workers face and need to take precautions against. These hazards can



## Electrical Safety Guidance for Working on Construction

Electrical Safety on Construction Sites: Full Guidance on Common Electrical Safety Signs, PPE, Considerations for Workers and Further Resources.



## Temporary electrical installations on construction and

Electrical site distribution equipment All units for the distribution of electricity are to comply with BS 4363 Specification for distribution assemblies for

## Electrical Safety in Construction Areas

This article covers the key electrical hazards, safe work practices, and essential control measures required to keep workers safe and ensure



## Construction Electrical Safety

Any time an employee is using electrical equipment they should be monitoring its use and maintenance. If there is any potential danger to electrical equipment should be taken out of service immediately



## Essential Guidelines for Safe Temporary Electrical

This article aims to provide a comprehensive overview of the essential guidelines for safe temporary electrical installations on construction sites, focusing on Best



## Electrical safety on small construction sites

This guide provides information about electrical supply and safety on small construction sites. It is for a person conducting a business or undertaking

## Temporary Electrical Supply HSE Procedure For

Below procedure will help you to establish a safe standard for the installation of temporary and permanent electrical fixtures/appliances on project sites.





## Temporary Power Safety on Construction Sites: Best

Through a real-world project scenario, we explore how structured connectors, IP67 plug systems, and modular distribution cabinets create safer,

## Electrical Safety Tips for Construction Workers

However, construction sites are always among the most dangerous places to work, and electrical hazards in construction sites



## Electrical Safety in Construction.cdr

Electrical Safety Precautions: o Inspect Tools and Equipment: Before using any electrical tool or equipment, inspect it for damage, such as frayed wires, cracked insulation, or missing grounding

## 9 Must-Follow Electrical Safety Tips for Construction Sites

Electrical safety on construction sites is essential for keeping everyone safe and reducing the risk of injuries. The following are essential tips to



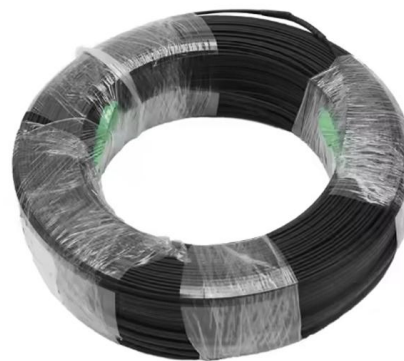
## Electrical Safety in Construction

Introduction Electrical Safety in Construction refers to practices and precautions that ensure the safe use of electricity on construction sites. It is a crucial aspect of Health, Safety, and Environment (HSE)



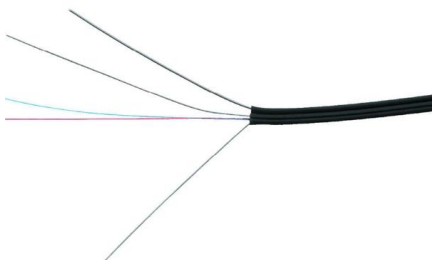
## Precautions While Using a Distribution Board

A distribution board, also known as a breaker panel or electrical panel, is a crucial component of any electrical system. It serves as a centralized hub for distributing electricity



## Problems and Precautions in the Operation of Distribution Boxes

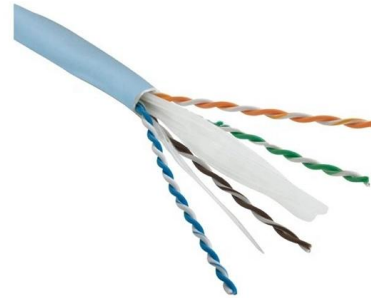
With the implementation of urban and rural power grid construction and renovation projects, the widespread use of distribution boxes, and the continuous increase in social electricity consumption,





## Temporary electrical wiring for construction sites

Temporary for construction Construction work requires electrical power for many purposes. However, exposure to weather, frequent relocation, rough use and other conditions not normally encountered

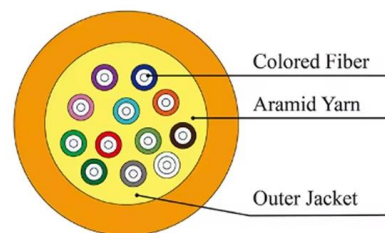


## Electricity in construction

HSE and other organisations have produced guidance on electrical safety that is suitable for a wide range of industries and technical competencies. Most of the information produced by the HSE is

## 8 Electrical Safety Tips for Construction Site Workers

Explore Electrical Safety Tips for Construction Site Workers to minimize risks, protect employees, and maintain a secure work environment.



## Summary of key points for construction and installation of distribution

The construction and installation points of distribution boxes and switch boxes are summarized as follows: 1. Select qualified products that meet national standards and safety requirements.



## Understanding Electrical Safety: Precautions and

First things first, we need to know what dangers we're dealing with. Common electrical hazards on construction sites include: Overhead Power Lines:



## A Guide To Electrical Safety On Construction Sites

Master electrical safety on construction sites with this essential UK guide. Learn to identify hazards, comply with regulations, and protect your team.

## Cautions and Requirements for Installation of

Distribution box is a low-voltage distribution device which assembles switchgear, measuring instruments, protective appliances and auxiliary equipment in a closed





## **Temporary Power Safety on Construction Sites: Best**

Loose wiring, exposed connectors, and unstable electrical connections can cause shocks, equipment failures, or costly downtime. This article examines

## **Contact Us**

---

For datasheets, pricing, or custom telecom energy solutions, please visit:  
<https://koskolong.co.za>