



Adam Tas Corridor Energy

Purpose of single-reel optical cable inspection





Overview

Single reel inspection work includes: checking, counting, appearance inspection and measurement of the specifications and quantity of optical cables and connecting equipment transported to the site, and measuring the main optoelectronic characteristics. As we all know, in order to ensure the quality of optical cables and ensure that the optical cables can transmit communication models normally after installation, single reel inspection and reel matching must be carried out before the optical cables are laid, and strict inspections must be carried. Verify Cable Reel Storage and Protection is as per Manufacturer's Recommendation. Fiber Optic Testing Testing is used to evaluate the performance of fiber optic components, cable plants and systems. No part of this book may be reproduced or utilized in any form or means, electronic or mechanical, including photocopying, recording, or by any information storage and retrieval system, without permission optical fiber to a distant receiver. The trucking company is responsible for any damage that happens to the cable from the point they pick up from the shipper and until you sign the bill of lading.



Purpose of single-reel optical cable inspection

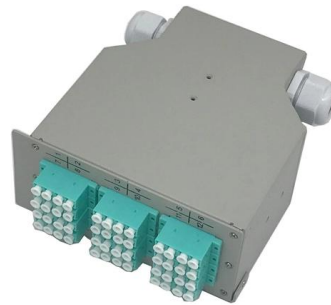


Single Mode Fiber Optic Cable Material Selection & Receiving

Verify Cable Reel Storage and Protection is as per Manufacturer's Recommendation. Verify all equipment and components received comply with the project PO specification and shall conform to

FI-500 FiberInspector(TM) Micro Fiber Optic Scope Camera

A fiber optic camera (also called a fiber optic scope or fiber optic inspection scope) is a specialized device designed to inspect fiber optic end faces. It magnifies and



Handbook Optical fibres, cables and systems

The simultaneous availability of compact sources and of low-loss optical fibres led to a worldwide effort for developing optical fibre communication systems. The real research phase of fibre-optic

FIBER TESTING BEST PRACTICES

Introduction With the introduction of low loss fiber optic components such as connectors and LC/MPO cassettes, loss budgets (test limits) are



becoming increasingly smaller. As a result, installers are



Guidelines Corning Recommended Fiber Optic Test

n-optical. Optical documentation includes link attenuation, component loss, and distance readings (fro an OTDR). Non-optical documentation includes cable route diagrams, splice plans, connector



Standard for Installing and Testing Fiber Optics

Never look directly into the end of any optical fiber unless you are certain that no light is present in the fiber. The light used for signal transmission in fiber optics is generally invisible to the human eye but



How to Test Fiber Cable Quality in Telecom Projects

Testing fiber cable quality is a mandatory engineering process, not an optional best practice. Quality verification ensures that optical fibers meet





The FOA Reference For Fiber Optics -Outside Plant

The following items are key considerations in preparation for installing the fiber optic cable when the construction is ready for cable placement. Optical fiber cable



Fiber Optic Cable Testing Methods ,Fluke Networks

Fiber Optic Cable Testing Methods Fiber optic networks are the backbone of modern telecommunications, providing high-speed data transmission over long distances with minimal loss.

fiber optic cable reel

The Purpose of Fiber Optic Cable Reels At the most basic level, a fiber optic cable reel serves as a storage and deployment system for fiber optic



The FOA Reference For Fiber Optics

If the fiber is old or suspected of damage, an actual loss test as described above may be necessary. Continuity Testing Often continuity testing is considered adequate,



TestTroubleshoot

Once a fiber optic cable plant, network, system or link is installed, it needs to be tested for four reasons: to insure the fiber optic cable plant was properly installed to specified industry standards.

Home -The Fiber Optic Association

After the cable arrives at the warehouse, prior to installation, its verification is required. This includes a visual inspection of the external appearance of packaging and the cable to determine required



Field Test Procedure for Optical Fibre Link Measurements

After fiber optic cables are installed, spliced and terminated, they must be tested. For every fiber optic cable plant, you need to test for continuity and polarity, end-to-end insertion loss and then

Several Steps For On-site Cable Reel Testing

Single reel inspection work includes: checking, counting, appearance inspection and measurement of the specifications and quantity of optical cables



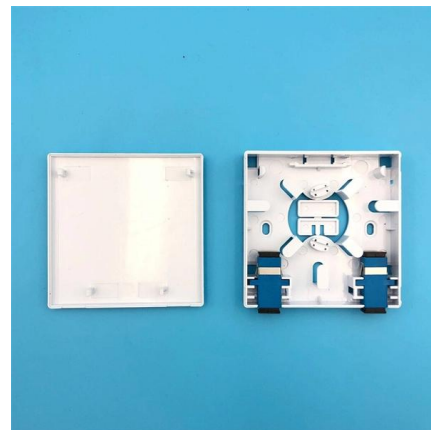
The FOA Reference For Fiber Optics

For every fiber optic cable plant, you need to test for continuity and polarity, end-to-end insertion loss and then troubleshoot any problems.



Everything you need to know about Fiber Optic Testing

Contents After the cables are installed and terminated, it's time for testing. For every fiber optic cable plant, you will need to test for continuity, end-to-end loss and



OTDR Testing Guide for Fiber Optic Cable Inspection

OTDR testing guide for fiber optics. Learn OTDR basics, benefits, and how to troubleshoot fiber networks.





Testing The Installed Fiber Optic Cable Plant

The test conditions should be similar to how the actual cable plant will be used when communications equipment is connected (see drawing below.) For insertion loss



The FOA Reference For Fiber Optics

Of course the fiber in the reference cables must match the type in the cables being tested and the connectors must be compatible. The condition of the connectors

Reference Guide to Fiber Optic Testing

Prior to installation, fiber inspections are performed to ensure that the fiber cables received from the manufacturer conform to the required specifications (length, attenuation, etc.) and have not been



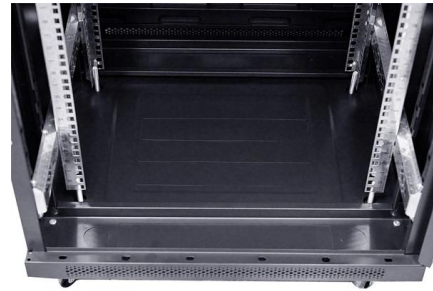
Spool (Reel) Testing

The simplest of the tests is a continuity test. You want to make sure the strands will pass a light all the way through the cable. You can do this with a VFL or a optical flashlight.



Fiber Optic System Testing Tutorial

It is measured by the optical fiber (and cable) manufacturer but can also be field-tested and verified. However, individual fiber attenuation is not a requirement for evaluating overall system



Inspection: General Questions

Q: What is the best magnification power for a fiber optic scope? A: Usually, 100x to 400x is considered optimal for viewing fiber end faces, with lower power scopes, 100 - 200x, suitable for multimode

OptiFiber® Pro OTDR Fiber Optic Cable Testing Tool

Fluke Networks OptiFiber® Pro OTDR built for enterprise fiber optic cabling certification testing. It supports copper certification, fiber optic loss, OTDR testing



FIP-500

Fastest and most reliable fiber inspection in the industry for single-fiber and multi-fiber connectors.



Contact Us

For datasheets, pricing, or custom telecom energy solutions, please visit:
<https://koskolong.co.za>