



Adam Tas Corridor Energy

QSFP28 optical module NRZ for five Central Asian countries

Application





QSFP28 optical module NRZ for five Central Asian countries



100GBASE-SL4 QSFP28 4 x 25G NRZ 850nm 30m

100GBASE-SL4 QSFP28 Optical Transceiver Module (MMF, 850nm, 30m, MTP/MPO, DOM) The QSFP28 Optical Transceiver Module is designed for use

QSFP, QSFP+, and QSFP28: What You Need to Know

If you're looking for the most advanced optical module package on the market, look no further than QSFP. QSFP+ and QSFP28 are the two latest



Generic Compatible 100GBASE-SR4 and 112GBASE

Generic Compatible 100GBASE-SR4 and 112GBASE-OTU4 QSFP28 Dual Rate 4 x 25G NRZ 850nm 100m DOM MPO-12/UPC MMF Optical Transceiver Module

Cisco Compatible 100GBASE-BX80-U QSFP28 BiDi 4 x 25G NRZ

Cisco Compatible 100GBASE-BX80 QSFP28 Optical Transceiver Module (SMF, 1270nm-



TX/1310nm-RX, 80km, LC, DOM) The Cisco compatible QSFP28 transceiver is a quad small form-factor



100G-QSFP28-AI and Data Center Networking

These products feature four channels of 25G NRZ electrical signals and four channels of 25G NRZ optical signals, a duplex LC connector, a distance of up to

Introduction and Applications of QSFP28 Optical Modules

The QSFP28 SR4 optical module complies with the IEEE 802.3bm standard for 100G Ethernet. It features 4 independent transmit and receive channels, with each channel supporting a



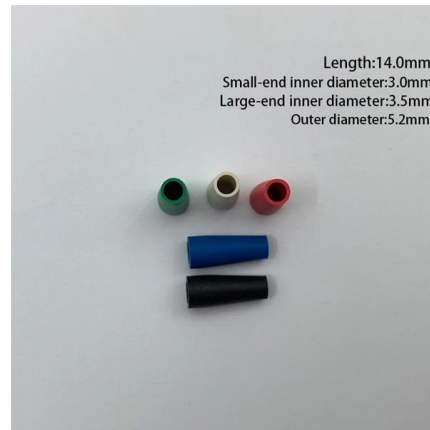
Intel® Ethernet QSFP28 Optic

The QSFP28 SR4 transceiver is a high-performing module for SR optical links over OM4 MMF, and is ideal for short-range, multi-lane data communication, and interconnects applications.



Design and Implementation Scheme of QSFP28 Optical Transceiver

Section 3 proposes the hardware and firmware design scheme of the QSFP28 optical transceiver based on the analyzed requirements. Section 4 analyzes the test bed construction and test results for



100GBASE-ZR4 QSFP28 4 x 25G NRZ 1310nm 80km

Operating with low power and supporting standard QSFP28 ports, it provides a

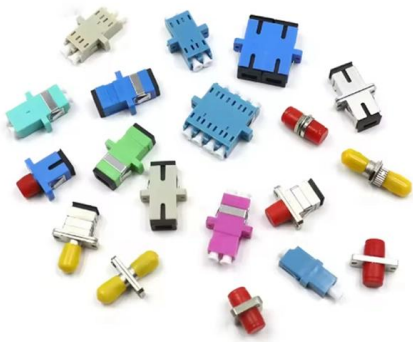
100GBASE-4WDM-40 QSFP28 4 x 25G NRZ 1310nm

100GBASE-4WDM-40 QSFP28 Optical Transceiver Module (Industrial, SMF, 1310nm, 40km, LC, DOM) The 100GBASE-4WDM-40 QSFP28 transceiver



QSFP28 optical transceivers , Smartoptics

Download the overview datasheet for QSFP28 transceivers, or browse all our transceivers, AOC and DAC cable assemblies. At Smartoptics, we believe



Design and Implementation Scheme of QSFP28 Optical

A quad, small form-factor pluggable 28 Gbps optical transceiver design scheme is proposed. It is capable of transmitting 50 Gbps of data up to a



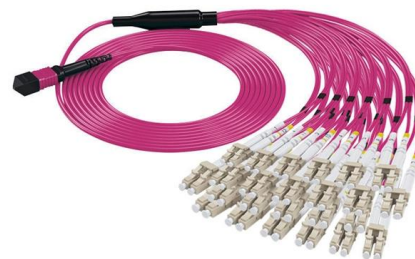
Generic Compatible 100GBASE-ER4 and 112G OTU4

The 100GBASE-ER4 and 112G OTU4 QSFP28 Dual Rate Optical Transceiver Module is designed for use in 100GBASE Ethernet and 4x28G OTN client



40/100GBASE-SM4 SWDM4 QSFP28 Dual Rate 4 x

40/100GBASE-SM4 SWDM4 QSFP28 Dual Rate Optical Transceiver Module (Dual Rate, MMF, 850/880/910/940nm, 100m, LC, DOM) The 40/100GBASE-SM4





100GBASE-LR4 and 112GBASE-OTU4 QSFP28 Dual

The 100GBASE-LR4 and 112GBASE-OTU4 QSFP28 Dual Rate Optical Transceiver Module is designed for use in 100GBASE Ethernet and 4x28G OTN client

Generic Compatible 100GBASE-SR4 QSFP28 4 x 25G

The 100GBASE-SR4 QSFP28 Optical Transceiver Module is designed for use in 100GBASE Ethernet throughput up to 100m over OM4 multimode fiber (MMF)



100G QSFP28 Single : Optical Transceiver Module , NEC

The NEC's 100G QSFP28 optical transceiver that enables high-speed data transmission of 100Gb/s. We offer a diverse range of options that support

100G QSFP ZR4 S Optical Module Overview

This product family includes QSFP28 modules covering transmission distances of 100 m, 500 m, 2 km, 10 km, 25 km, and 40 km. Now, with the QSFP-100G-ZR4-S, customers can get full



QSFP28-50G-ER Optical Transceiver Module

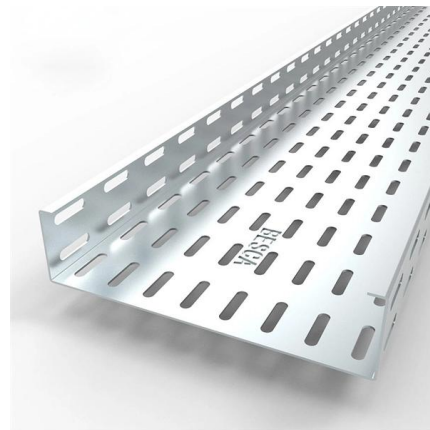
TARLUZ 50GBase-ER QSFP28 transceiver module is designed for 50 Gigabit Ethernet, it transmits over single mode fiber up to 40km. This 50G QSFP28



- IP65/IP55 OUTDOOR CABINET
- OUTDOOR CABINET WITH AIR CONDITIONER
- OUTDOOR ENERGY STORAGE CABINET
- 19 INCH

Extreme Compatible 100GBASE-PSM4 QSFP28 4 x

Extreme Compatible 100GBASE-PSM4 QSFP28 Optical Transceiver Module (SMF, 1310nm, 500m, MTP/MPO, DOM) The Extreme Compatible QSFP28 Optical



100GBASE-ZR4 QSFP28 4 x 25G NRZ 1310nm 80km

100GBASE-ZR4 QSFP28 Optical Transceiver Module (SMF, 1310nm, 80km, LC, DOM) The QSFP28 optical transceiver module is designed for use in 100GBASE



Generic Compatible 100GBASE-SR4 QSFP28 4 x 25G

The 100GBASE-SR4 QSFP28 Optical Transceiver Module is designed for use in 100GBASE Ethernet throughput up to 70m over OM3 and 100m over OM4



100G QSFP28 Optical Transceiver Modules , AscentOptics

Ascentoptics provides a wide range of QSFP28 series products, including SR4 100m over multimode fiber, PSM4 for 500M transmission over single-mode fiber, and CWDM4, LR4, ER4, and ZR4, which

QSFP28 Transceiver: Complete 100G Connectivity Guide (2026)

QSFP28 transceiver guide covering module types, pricing, compatibility, and deployment. Learn how to choose, deploy, and troubleshoot 100G QSFP28 optics.



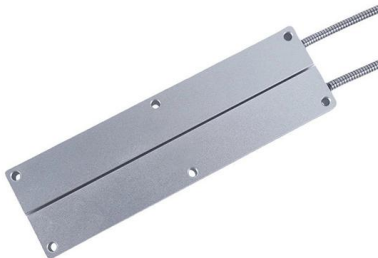
100GBASE-BX80-U QSFP28 BiDi 4 x 25G NRZ 1270nm-TX/1310nm

It operates on 1270 nm (TX) / 1310 nm (RX) wavelengths and uses a standard LC connector. The module integrates cooled 4 x 25 Gb/s LAN-WDM NRZ EML lasers, ensuring stable and reliable



100G QSFP28 Optical Transceiver Modules

FS 100G QSFP28 module solutions provide various high-density, low-power 100 Gigabit Ethernet connectivity options for data centre, high-performance computing networks, enterprise



HW QSFP-100G-CWDM4 Compatible 100GBASE

Search now HW QSFP-100G-CWDM4 Compatible 100GBASE-CWDM4 QSFP28 Optical Transceiver Module (SMF, 1271nm, 1291nm, 1311nm and 1331nm, 2km,

Intel® Ethernet QSFP28 Optic

Intel® Ethernet QSFP28 Optics are an excellent choice for fiber systems in high-speed communications equipment. Both short range and long-range transceiver modules are available for maximum





Cisco QSFP28 100G ZR Digital Coherent Optics Module Data Sheet

Cisco ® QSFP28 100G ZR extends 100GbE coherent links from QSFP28 ports reaching up to 80km over dark fiber and up to 300km over amplified Dense Wave Division Multiplexing

Contact Us

For datasheets, pricing, or custom telecom energy solutions, please visit:
<https://koskolong.co.za>