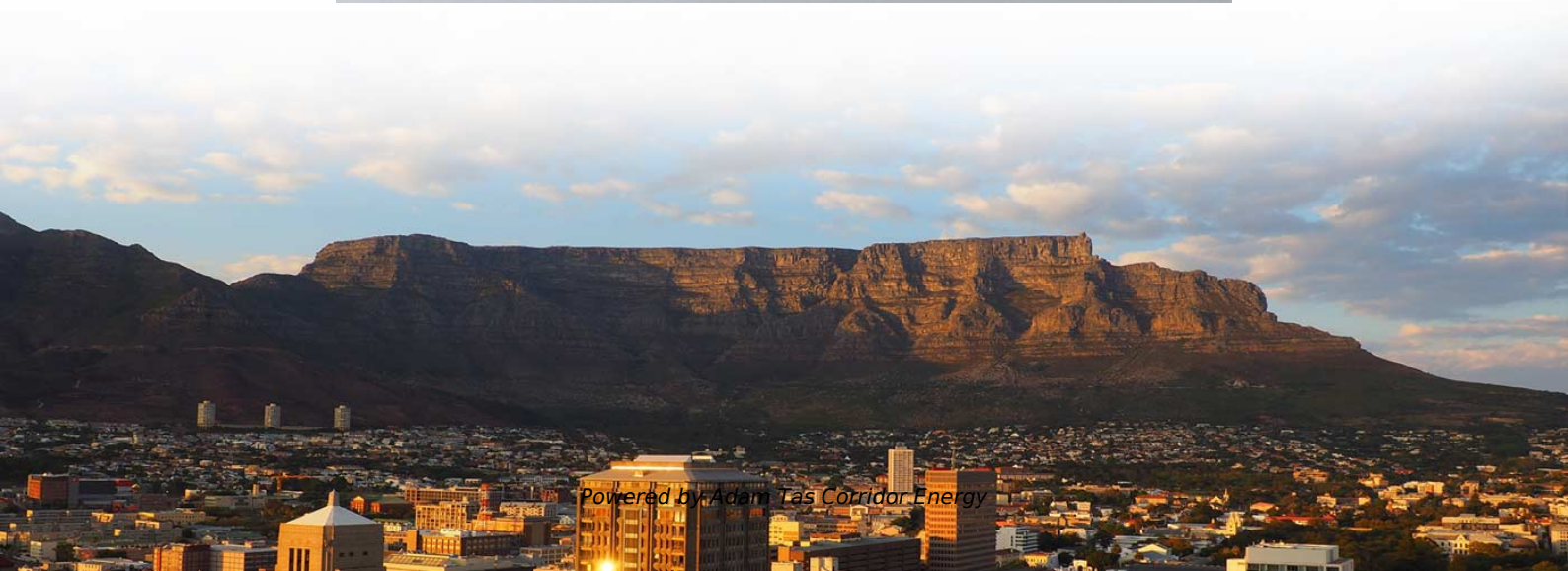
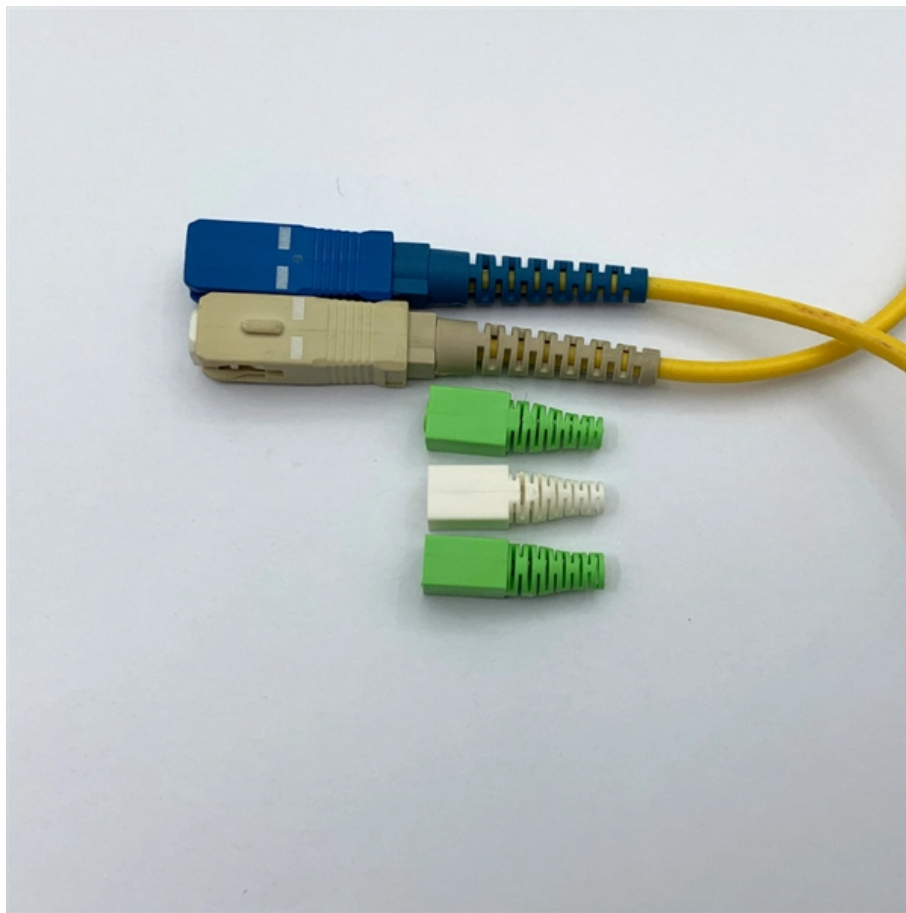




**Adam Tas Corridor Energy**

# **Quality Requirements for Seismic Bracing of Cable Trays**





## Quality Requirements for Seismic Bracing of Cable Trays

---



### Performance-based optimum seismic design of cable tray system

The seismic performance levels of cable tray systems are presented according to current seismic design codes. A performance-based optimum seismic design procedure for cable tray

### How to Get Quick and Accurate Cable Tray Pricing

Learn how to get quick and accurate cable tray pricing for your projects. This guide covers new builds, renovations, and custom systems.



### Rev 7 to Procedure SAG.CP3, "Seismic Design Criteria for Cable Tray

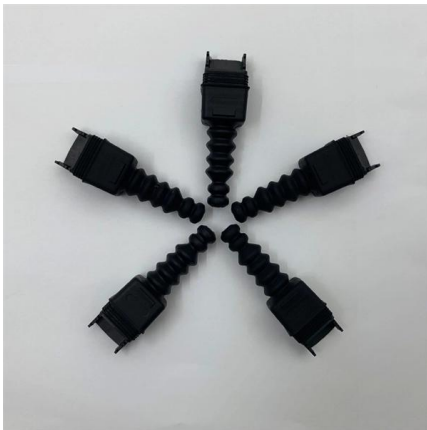
A cable tray hanger is classified as a \_ seismic Category I structure, and therefore, it shall be adequately designed for the effect of the postulated seismic event combined with other applicable and'

### Understanding Seismic Support for Electrical Installations

In conclusion, the specified requirements for an electrical seismic support scheme are critical for



maintaining system integrity in the event of an earthquake. By understanding and implementing the



### **SEISMIC BRACING OF A DISTRIBUTED CABLE TRAY SYSTEM**

An innovative bracing system was designed to provide lateral bracing for the cable tray system. The bracing system was designed to meet building code requirements in addition to the owner's design

### **Cable Tray and Conduit System Seismic Evaluation Guidelines**

Guidelines are presented here for conducting in-plant seismic ruggedness review of conduit, cable trays, and their support systems. The in-plant review has two purposes.



### **Rev 7 to Procedure SAG.CP3, "Seismic Design Criteria for Cable Tray"**

The design requirements for seismic Category I structure are delineated in Regulatory Guide 1.29. This document provides the seismic design guideline for cable tray hangers of Comanche Peak Steam



## Seismic Bracing Systems for Cable Trays Catalog

Explore seismic bracing solutions for cable trays. Catalog details wire rope/cable systems, specs, design for earthquake protection.

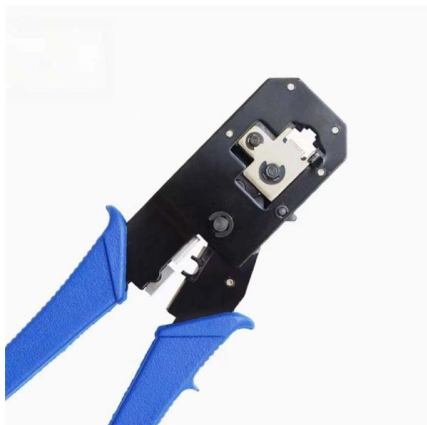


## Understanding the Seismic Resistance of Cable Trays

This article discusses the importance of seismic resistance for cable trays, detailing when seismic braces are necessary, the factors that affect seismic

## EARTHQUAKE PROTECTION

Suspended systems such as piping, equipment and ductwork need seismic braces to keep them from swaying during an earthquake. Seismic braces can be flexible using aircraft quality cables, or rigid



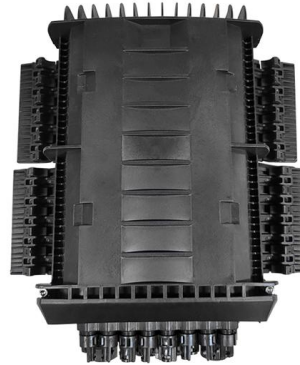
## Cable Tray Checklist for High-Seismicity Projects

The right tray type should be selected based on the expected cable load, support spacing, bracing method, and required retention performance--not on ordinary installation habit alone.



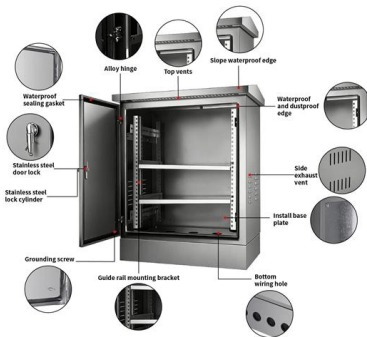
## Seismic Bracing Ensures Stability and Safety of Cable

Seismic Bracing - Enhancing System Stability and Seismic Resistance Seismic bracing, typically made of high-strength metal, is key component specifically



## Appendix 3F Cable Trays and Cable Tray Supports

This appendix provides the design criteria for seismic Category I cable trays and their supports. Seismic Category II cable trays and their supports are also designed utilizing the design criteria of this appendix.



## Seismic Bracing Systems

Seismic bracing systems, are developed to prevent possible damages in the building installation, especially during natural disasters



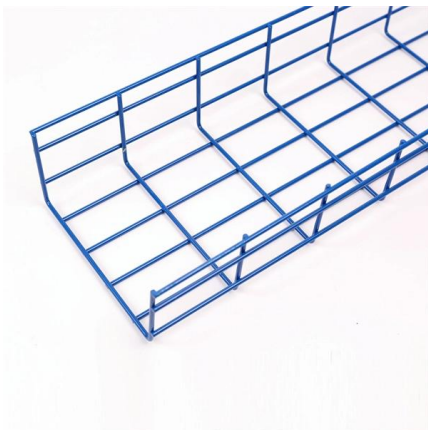
## Westinghouse AP1000 Design Control Document Rev. 19

The AP1000 cable tray system design requires no sprayed-on material for fire protection. Cable ties are provided at spacing greater than 4 feet, thereby permitting cable movement within the trays. The



## Vogtle Electric Generating Plant (VEGP) Units 3 and 4 Updated

Cable Trays and Cable Tray Supports This appendix provides the design criteria for seismic Category I cable trays and their supports. Seismic Category II cable trays and their supports are also designed



## KINETICS(TM) Seismic & Wind Design Manual Section

D9.0 - Electrical Distribution Systems Title Seismic Forces Acting On Cable Trays & Conduit Basic Primer for the restraint of Cable Trays & Conduit Pros and Cons of Struts versus Cables

## Seismic analysis and design of electrical cable trays and support

Most cable trays in nuclear power plants are classified as seismic category I components. Current safety requirements dictate that all such components be adequately designed in order to



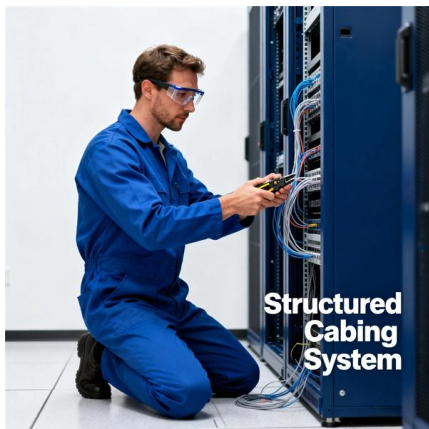


## SEISMIC BRACING OF A DISTRIBUTED CABLE TRAY SYSTEM

Traditional system for bracing cable trays using diagonal bracing extending up to the roof would have been impractical due to the extensive amount of cable trays, the lightweight framing of the roof, and

## Seismic design and qualification of cable trays in nuclear power plants

Cable trays are light equipment components. They consist of steel ladder type cable trays and a support system. In case of horizontal cable trays, the trays are supported by cantilevers

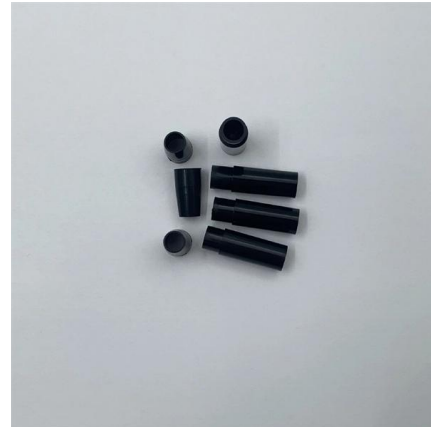


## Installing Seismic Restraints for Electrical Equipment

Seismic restraint devices include vibration isolation systems, cable or strut suspension systems, roof attachment systems, and steel shapes. An electrical danger instruction chart is provided (page 160)

## Cable Tray and Conduit System Seismic Evaluation Guidelines

A number of shake table tests on portions of cable tray and conduit systems confirm these observations from past earthquakes and demonstrate that typical configurations perform well under repeated high-



### Specification

The contractor shall provide pre-engineered seismic restraint systems to meet total design lateral force requirements for support and restraint of piping, conduit, cable trays and other similar systems and

### Seismic and cable tray solution flyer

Our team of experts can help you select the best cable tray series for your application, as well as designing your seismic bracing layout to ensure it meets applicable building codes and standards.



### Why do 150N/m Cable Trays Require Seismic Bracing?

Not all cable trays require seismic bracing. Smaller trays (e.g., 200mm) that contain only a few control or lightweight cables will typically have a total weight below 150N/m.



## Performance-based optimum seismic design of cable tray system

A performance-based optimum seismic design procedure for cable tray systems is given and verified by three studied cases.



## What are the seismic design considerations for cable trays?

By carefully considering the material selection, component sizing, connection details, dynamic response, installation, and support, we can design cable tray systems

## Contact Us

---

For datasheets, pricing, or custom telecom energy solutions, please visit:  
<https://koskolong.co.za>