



Adam Tas Corridor Energy

RRU optical module capacity





RRU optical module capacity



Which Optical Modules Are Commonly Used In 4G Base

In this blog, ETU-LINK will talk about 4G base stations and common types of optical modules. The base station can be divided into two modules: the RRU for

1RU G-Series High-Density Optical Fiber Enclosure

These 1RU High-Density Optical Fiber Enclosures ensure flexible and future-proofed fiber optic hardware solutions for fast, reliable connectivity for servers and switches in data centers, local area



Gamma632 Indoor RRU Data Sheet-draft

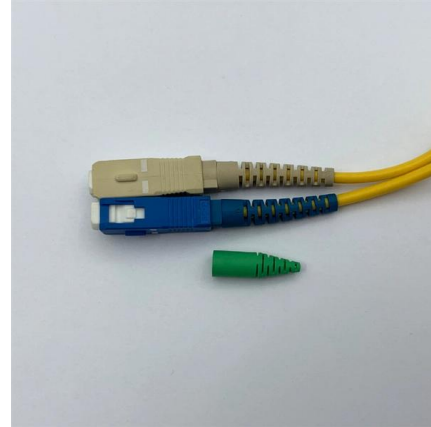
The Gamma632 is a 4G& 5G dual-mode Remote Radio Unit (RRU) product independently developed by Baicells with independent intellectual property rights. The product can work in multiple bands of LTE

Gamma632 Indoor RRU Data Sheet-draft

It can help operators enhance indoor coverage, improve network capacity and cell edge rate,



and meet the requirements of indoor wireless network capacity and coverage very well.



What is RRU and BBU

RRU and BBU are crucial components in base station construction, enabling a distributed architecture that improves efficiency.



Changes in RRU5909& RRU5309& RRU5309w& RRU3959a Hardware

Purpose This document provides reference for planning and deploying a DC blade RRU5909, RRU5309, RRU5309w and RRU3959a (referred to as RRU in this document). RRU is short for remote radio



HUAWEI RRU3268 DESCRIPTION Pdf Download

View and Download Huawei RRU3268 description online. RRU3268 radio pdf manual download.





RRU-Remote Radio Unit: Function, Concept, Details

The working, concept and function of Radio remote Unit RRU is to connect user equipment's with network using available frequency resources



A Comprehensive Guide to Remote Radio Units (RRUs)

Discover the essential components, functions, and benefits of Remote Radio Units (RRUs) in the telecom industry. Learn how RRUs improve network

RRU PCB Manufacturing: Core Solution for 5G Networks

Explore the crucial role of RRU in 4G and 5G networks. Discover Highleap's high-precision RRU PCB solutions that drive efficiency and connectivity.



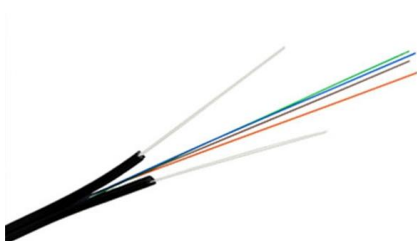
RRU5905/RRU5905w Technical Description

The RRU5905/RRU5905w adopts a dual-transmitter and dual-receiver design, which further improves the output power and carrier capacity. The software version of



RRU5527t Hardware Overview , PDF , Fiber Optic

It converges and deconverges CPRI data to reduce the required CPRI optical fibers between a BBU and RRUs. The RMU3900A is supported in V100R012C00 and



Ericsson RBS 3418 Product Description

Main Unit RRU Dark fiber network Optical fiber Optical fiber Figure 11. The RBS 3418 connected to a dark fiber network 221 01-FGC 101 066 Rev D 2007-01-23 & copy;

What is a Remote Radio Head (RRH)?

A Remote Radio Head (RRH) or Remote radio unit (RRU) is the RF circuitry of a base station enclosed in a small outdoor module. The RRH performs





Comba Telecom

Disaggregation: open Interface not only between BBU and RRU, but also the Layer within the BBU and RRU Engineered with Multi-TRX radio technology, the RRU

High-Level 5G Architecture Explained: CU, DU, and

Understand the high-level 5G architecture with CU, DU, and RRU components, including the role of F1 interface and lower-layer splits in modern



Radio Access Network Architecture , Springer Nature Link

The baseband processing capability is typically dimensioned to support three or six MIMO-based 1 sectors. Within these shelves, there are also controllers for X2, S1, and fiber-optic



Remote Radio Unit RRU9000

It uses optical fiber to pull the RF module in the base station to the remote RF unit, and put it on the site determined by the network planning, thus saving a large number of machine rooms needed in the

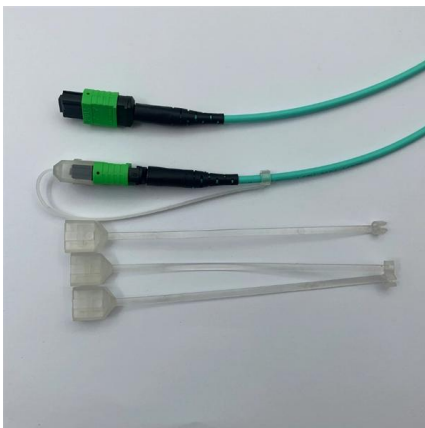


Comba Telecom

Engineered with Multi-TRX radio technology, the RRU allows 4G/5G capacity upgrade to 2T4R, 4T4R or 8T8R for both indoor and outdoor solutions depending

HISILICON Optical Modules in the field of communication base stations

In 4G network, the optical modules used to connect bbu and rru are mainly Gigabit to 10 Gigabit optical modules; in 5G network, the interfaces between bbu and rru are such as cpri



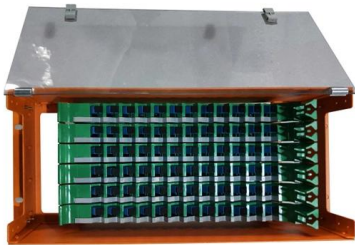
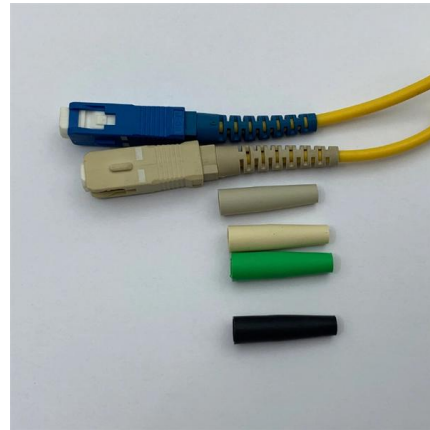
RRU5517t Hardware Description

Explore the Huawei RRU5517t Hardware Description. This guide covers RRU introduction, functions, technical specifications, ports, indicators, cables, and auxiliary devices for SRAN17.1 and later versions.



5G Remote Radio Head (RRH) Explained:

It also lists vendors or manufacturers of 5G RRH units. The Remote Radio Head (RRH) architecture consists of a baseband unit (BBU) and a remote radio unit



RRU & BBU Fiber Cable Installation Guide , PDF

RRU-BBU Optical Fiber Cable Distribution Guide (GCUW) - Free download as PDF File (.pdf), Text File (.txt) or view presentation slides online. This document

DBS5900 Distributed Base Stations -- Huawei Enterprise

The DBS5900 adopts a modular structure, with the baseband unit BBU and remote radio unit RRU deployed separately. The DBS5900 has the characteristics of



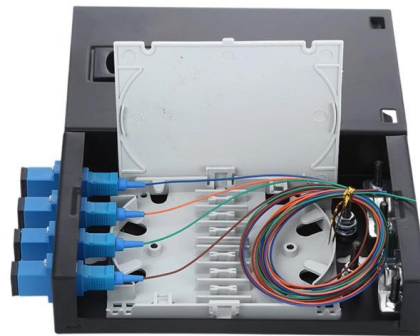
4RU G-Series High-Density Optical Fiber Enclosure

These 4RU High-Density Optical Fiber Enclosures ensure flexible and future-proofed fiber optic hardware solutions for fast, reliable connectivity for servers and



RRU Installation and Hardware Guide

The document provides instructions for installing RRU, DBS, BTS and TMA equipment and their associated cables. It describes the appearance and



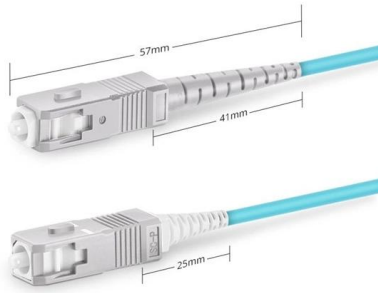
RRU Cables: Bridging the Gap in Wireless Infrastructure

This article aims to shed light on how RRU cables, including products like fiber of fiber optic cables and micromodule fiber cable, are vital in bridging the existing gaps in wireless

What is RRU in Telecom?

RXF and SMP-MAX connectors can also be used in RRU applications. RXF is an optical, ruggedized connector that provides secure and sealed connections. SMP





Simplex SC UPC

Understanding RRU in Telecommunications

Additionally, the RRU unit establishes a connection to the base station through a bidirectional fiber optic link. A common public radio interface (CPRI) is

Contact Us

For datasheets, pricing, or custom telecom energy solutions, please visit:
<https://koskolong.co.za>