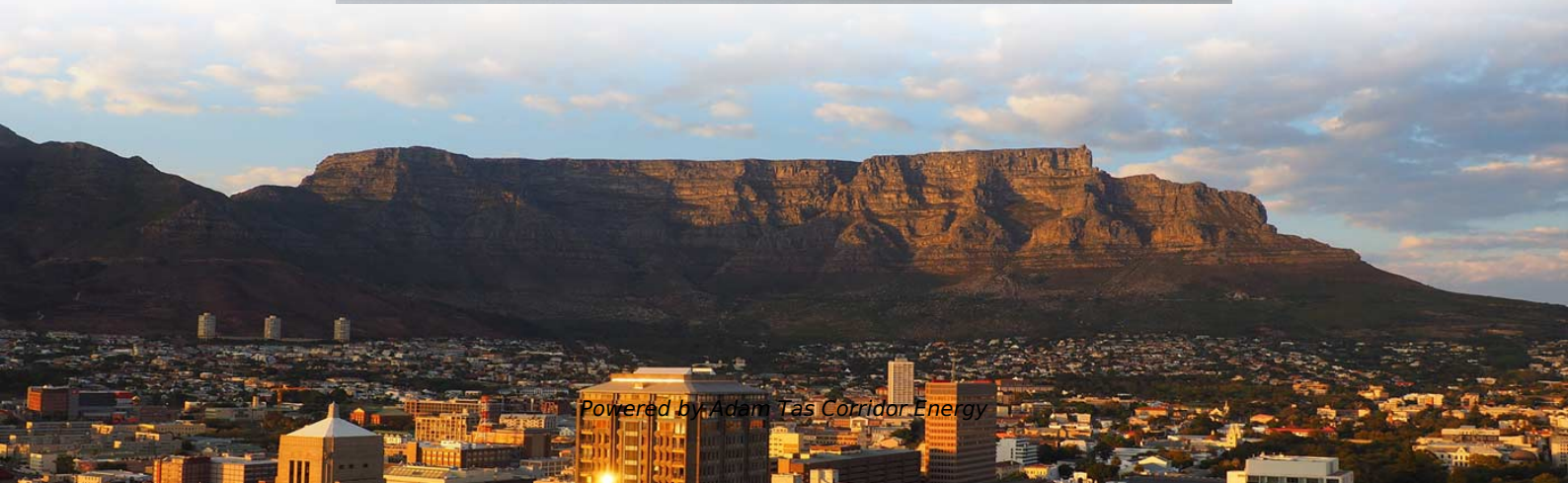




Adam Tas Corridor Energy

RRU optical module transmission and reception abnormality





Overview

Use an optical power meter to check whether the transmit optical power of the optical module is normal. After combining the RRU log analysis and the alarm of the optical module, the radio frequency maintenance link is triggered by the power-off of the RRU board, as shown in the following screenshot. The cause of the RRU startup alarm record is 00 00, which represents the board is powered off. Customers in the use of optical modules will more or less encounter a variety of failure problems, such as optical module model selection is correct, the use of jumper is correct and some common problems, customers have the ability to judge and have a clear solution, but for some of the use of. This document describes routine maintenance procedures for an RRU3252/RRU3256 (referred to as RRU in this document), such as equipment preventive maintenance and power-on and power-off operations.



RRU optical module transmission and reception abnormality



Understanding the Radio Remote Unit (RRU): The Backbone of

Signal Transmission and Reception The RRU is responsible for transmitting and receiving signals between the base station and wireless devices. It converts data into radio frequency (RF) signals for

Remote radio head

A remote radio head (RRH), also called a remote radio unit (RRU) in wireless networks, is a remote radio transceiver that connects to an operator radio control panel via electrical or wireless interface.



Optical module common faults and solutions

In this article, we will focus on teaching you how to troubleshoot and solve the common three categories of optical module failure. First, the transmission class of the optical module fault

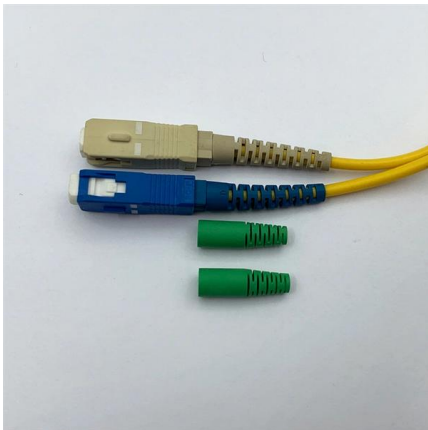


Radio Frequency Remote Unit (RRU) Key Component for Wireless

The Radio Frequency Remote Unit (RRU) is a vital device that converts baseband signals into radio



frequency signals and amplifies their power. Collaborating with BBU, it enables distributed base

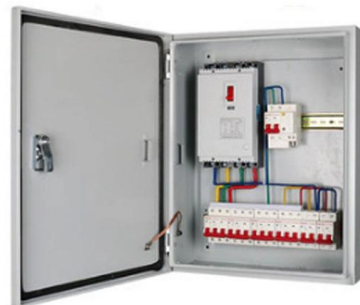


Troubleshooting Your Optical Transceiver: A

Optical transceivers play a crucial role in modern data communication networks, enabling the transmission and reception of optical signals across fiber

Passive WDM in 4G/5G forward transmission

1?Brief description of passive wavelength division forward transmission scheme Passive WDM uses WDM technology to combine the



How Do I Ensure that the Transmit Power and Receive Power of an

Ensure that the transmit and receive power values of the two optical modules are in the normal ranges. Otherwise, traffic forwarding on the optical interfaces may be abnormal or the optical modules may



RRU

CoMP involves coordinating the transmission and reception of signals across multiple RRUs to improve coverage and capacity.



RRU Cables: Bridging the Gap in Wireless Infrastructure

RRUs, often positioned in strategic locations, are essential for the effective transmission and reception of wireless signals. RRU cables, therefore, become a critical component in this setup.

RRU (remote RU)

RRU stands for Remote Radio Unit, also known as Remote Radio Head (RRH). It is a key component in modern wireless communication systems,



Remote radio unit (rru) and base band unit (bbu)

A remote radio unit (RRU) in a radio base station system can include a cyclic prefix (CP) module having a CP adder for downlink channel processing includes a CP remover for uplink channel processing.



Difference Between AAU, RRU, and BBU

AAU, RRU, and BBU are key components in a telecom network, particularly in modern wireless communication systems like 4G and 5G. Here's a

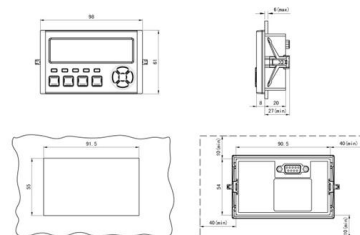


Huawei Enterprise Support Community

We're sorry but web site doesn't work properly without JavaScript enabled. Please enable it to continue. Loading

How to do if Transmit or Receive Power Is Abnormal on Optical Port of

To rectify the fault, use optical modules from the same vendor. Perform a short fiber loopback test. If the fault cannot be located, replace the optical module or fiber.





The UE Cannot Access the Cells Due to the Optical Module

Therefore, it is suspected that this problem is caused by delay in RRUs or BBUs. RRU engineers check the negotiation rates of the optical modules in the eight cells.



RRU3252/RRU3256 Hardware Maintenance Guide

It takes about 5 minutes to replace an optical module on the RRU, which involves removing fiber optic cables and a faulty optical module, installing a new optical module and the fiber optic cable, and



Optical Module Common Failure Of Optical Power

When the transmit optical power exceeds the nominal working range, it may cause the optical module to work abnormally, thus affecting the network data



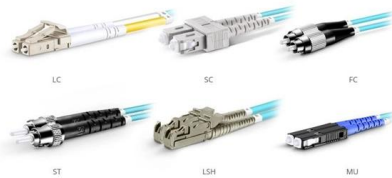
Which Optical Modules Are Commonly Used In 4G Base

In this blog, ETU-LINK will talk about 4G base stations and common types of optical modules. The base station can be divided into two modules: the RRU for



What is remote radio unit (RRU)?

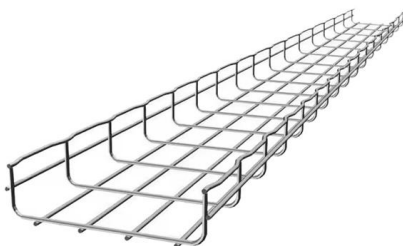
remote radio unit (RRU) A Remote Radio Unit (RRU), also known as a Remote Radio Head (RRH), is responsible for the transmission and reception of radio signals, connecting wireless devices to the



OM3 Fiber Patch Cable Family

Troubleshooting Guidelines for Optical Modules

Remove and reinstall the optical module. If the fault persists, replace the optical module with a normal one of the same type to check whether the optical module is faulty. If the fault persists, collect log



What is the function of rru in telecommunication

In the world of telecommunications, the Remote Radio Unit (RRU) plays a crucial role in enabling the seamless transmission of data and voice



Optical Module Common Failure Of Optical Power

When the received optical power exceeds the nominal working range, it may cause the optical module to work abnormally, thus affecting the network data



Understanding Remote Radio Units (RRU)

RRU, or Remote Radio Unit, is a distributed frequency unit that connects mobile devices to a cellular network via fiber optic links. It performs functions like

RRU-Remote Radio Unit: Function, Concept, Details

In this article, we will explain the concept, function and details of RRU- Remote Radio Unit which is used in telecom and telecommunication field as a



What is the function of the Remote Radio Unit (RRU) in

The Remote Radio Unit (RRU) is a critical component in the deployment of 5G networks, including those by Ericsson. Its primary function is to



Huawei BBU CPRI Port Troubleshooting & Arrangements

As a result, the timing loop fails. 2-The user has run a command that block the CPRI port. 3-If the optical transmission is used, the optical module on the port of the



Huawei BBU CPRI Port Troubleshooting & Arrangements

In CPRI MUX, the services of the peer mode are interrupted when the local mode is a converging party and the faulty port provides the convergence function. In ring

Understanding RRU in Telecommunications

1. RRU stands for Radio Remote Unit and is the distributed frequency unit that connects to an operator's network and user equipment like cell phones. It is





Analyzing Abnormal Situations During Installation and Use of Optical

As core components of optical communication systems, the proper installation and use of optical modules directly impacts network stability. This article systematically identifies common

Contact Us

For datasheets, pricing, or custom telecom energy solutions, please visit:
<https://koskolong.co.za>