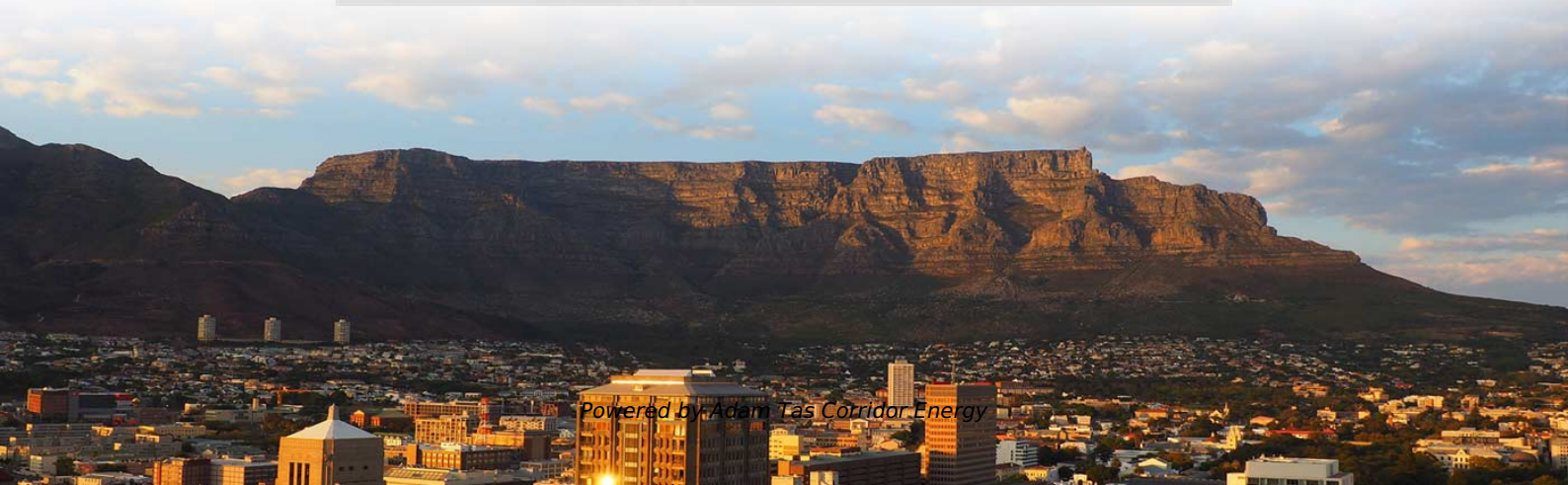




Adam Tas Corridor Energy

Reasons for not using cable trays when laying cables in factory buildings





Overview

incorrect installation procedures in instrumentation cable trays can cause signal problems, make maintenance more frequent, create safety risks, and even waste a lot of time and money on projects. This comprehensive guide investigates the most frequent wire management challenges faced in real-world setups and demonstrates how the correct cable tray accessories may address them. It also offers future-ready ideas, troubleshooting guidance, and useful suggestions to guarantee your cable systems. When completely installed, without damage either to conductors or structural system use maintain spacing or to keep cables in place when the tray is bent the minimum bend radius for cables as they exit the bottom of the cable tray. Even though cable trays are important, existing systems often face some common problems: Not Enough Load-Bearing Capacity: Older designs might not handle the growing number of cables needed for modern industrial equipment. Route Planning and Layout Principles Coordinate with Building Structure: Cable tray routing should align with architectural design, avoiding unnecessary.



Reasons for not using cable trays when laying cables in factory buil



Common Mistakes to Avoid When Installing Cable Trays

Cable trays should not be suspended unsupported in the air over distances. The most common error that appears all too frequently is installation of supports spaced too far apart, which allows the tray to

Technical Guidelines for Cable Tray Installation and

Cable tray installation must comply with specific technical standards to ensure electrical safety, system reliability, and long-term maintainability. This document



Best Practices for Installing Cables in Trays

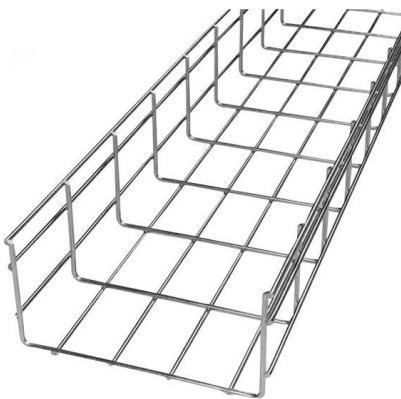
Quick Installation Checklist (Key Steps) Cable tray cable installation generally follows these steps: Inspect cables before

Cable Trays for Modern Infrastructure , Ajay Industrial

Cable trays are the backbone of cable management in today's complex infrastructure.



These systems are essential for supporting, organizing, and



Cable Tray Systems: Requirements and Best Practices

Verify that cables are properly secured with suitable ties or clamps and that identification labels remain legible. Remove abandoned or out-of-service cables where possible to free space and

How to Fix Common Cable Management Issues using

This comprehensive guide investigates the most frequent wire management challenges faced in real-world setups and demonstrates how the



Cable Tray Technical Guide A practical guide to product selection and

Cable tray is considered to be a system. It must provide continuous support for cables, and the electrical continuity of the cable tray system must be maintained.



Electrical Cable Tray Manufacturing Use: Enhancing Cable

Learn how electrical cable tray use in manufacturing enhances durability, organization, and safety for efficient cable management in industrial settings.



Cable Trays Pros & Cons: Do You Know How to Use

In this article, we'll give you the lowdown on cable trays, including what's to like and what's to loathe, as well as how to optimize your cable trays for

Optimising Industrial Plant Cable Tray Systems: A

A well-designed cable tray system is vital for keeping your factory running smoothly and safely. This guide cuts through the noise, offering



What are Cable Trays & Different Types of Cable Trays

Learn what cable trays are & explore the various types, benefits, and purposes. Gain insights into how electrical cable trays can revolutionize your



Precautions for Cable Tray Installation

Cable Tray Installation Guide The correct installation of cable trays is crucial for establishing a reliable and efficient cable system. It ensures that cables are



FactSheet

FactSheet Electrical Safety Hazards of Overloading Cable Trays According to the 2005 National Electrical Code® (NEC), a cable tray system is " unit or assembly of units or sections and

Cable trays are structural components of a facility's electrical system

Cables in these trays are easy to mark, find, and remove. If the cable tray system is not managed properly and overloading, mixing of cable classifications, improper grounding, and other Code non



What is Cable Tray and How it is used in Industrial

What is Cable Tray? In electrical cabling, a cable tray is a metallic structure used to handle insulated electrical power distribution, control, and



Avoiding Mistakes in Instrumentation Cable Tray

This document lists the most typical mistakes that EPC teams should not make while installing instrumentation cable trays to make sure the plant runs



Do You Really Need a Cable Tray? Here's How to Decide

Blog Do You Really Need a Cable Tray? Here's How to Decide Cable trays are a popular option for managing cables in various types of buildings and



Wall Mount Cabinet Server Racks



Cost-Effective Solutions: The Advantages of Cable Trays

This article examines the reasons behind the popularity of cable trays as a cost-effective method for organising wiring systems and discusses their benefit.



Cable Tray Systems: Requirements and Best Practices

Cable tray systems are structural components used to support insulated conductors and control, instrumentation, and communication cables. They are typically installed overhead, along

Common Issues in Steel Cable Tray Installations

Whether installed as stainless steel cable trays, these components offer durable and flexible solutions for routing cables safely. However, improper





Cable Tray SHIB NAL

It is important to note that although NEC Table 392.3(A) states that "other factory-assembled, multi-conductor control, signal, or power cables that are specifically approved for installation in cable trays"



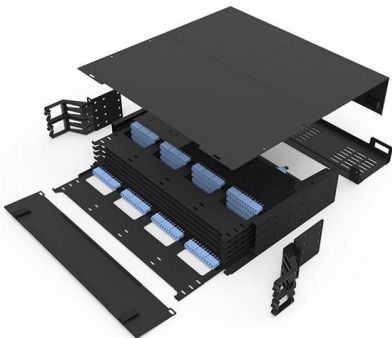
Installation Of Cable In Cable Trays: NEC, Safety

Cable tray layout must take into consideration the design limits of the cable. To minimize damage and verify integrity after installation, follow the practices



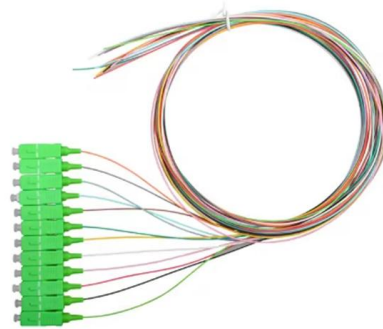
How Cable Trays Keep Industrial Operations Running Smoothly

Cable trays improve safety in industrial environments by organizing and securing electrical cables, reducing the risk of tripping hazards, preventing cable damage, facilitating



Types of Cable Trays - Purpose, Advantages,

Cable tray systems are alternatives to wire ways and electrical conduit, which completely enclose cables. Cable trays are capable of supporting all types of



6 Benefits of Installing a Cable Tray System in Your

Fortunately, the solution is clear: cable tray system. Cable tray systems are becoming increasingly essential and non-negotiable in today's

The Role of Cable Trays in Commercial Buildings

The use of cable trays in commercial buildings offers numerous benefits: **Enhanced Organisation**: Cable trays provide a structured pathway for cables, reducing clutter and making it



Contact Us

For datasheets, pricing, or custom telecom energy solutions, please visit:
<https://koskolong.co.za>