



Adam Tas Corridor Energy

Reduce losses in beam splitters





Overview

Additionally, employing high-quality coatings and materials that minimize absorption and reflection losses can significantly reduce attenuation. Regular maintenance and cleaning of optical components can also prevent additional losses due to surface contamination. Signal attenuation refers to the reduction in the intensity of a light beam as it passes through a medium or a device. Throughout, there is an interplay between information theoretic concepts such as entropy and physical considerations such as quantum system design, noise, and. In order to minimize this error, a very high-quality substrate with a root mean square (RMS) error of 2 nm must first be utilized. The library includes research papers, conference proceedings, technical articles, and book chapters that cover both theoretical and.



Reduce losses in beam splitters



DTS0095

Both 1XN and 2XN splitters can be constructed in this fashion with as many as eight or more outputs, with both low return losses and low insertion losses. This design is extremely flexible, allowing one to

Equalities and inequalities from entanglement, loss, and beam splitters

For a pure state interfering with vacuum on a beam splitter, the reduced system of the input mode is equivalent to the input state subject to loss, r T. Thus studies of entanglement and loss are



Transmission and Reflection by Beamsplitters

In addition to the task of dividing light, beamsplitters can be employed to recombine two separate light beams or images into a single path. This interactive tutorial

How to Select a Beamsplitter

Cube Beamsplitters: A cube beamsplitter is composed of a prism with a partially-reflecting coating bonded to a second prism, and typically



divides a beam based on power or polarization.



How beam splitters affect signal attenuation and polarization

When a beam splitter divides the incoming light, some of the energy is inevitably lost, leading to a decrease in signal strength. The material and coating of a beam splitter significantly

Beam Splitters - optical power splitter, beamsplitter, thin

What are Beam Splitters? A beam splitter (or beamsplitter, power splitter) is an optical device which can split an incident light beam (e.g. a laser beam) into two



Beam splitters

Additionally, the library addresses challenges in optimizing beam splitter performance, such as minimizing losses, handling high power levels, and maintaining polarization properties.



How Beamsplitters Work: Principles and Applications

High-precision applications require coatings designed to minimize these polarization-dependent losses, ensuring the two resulting beams maintain identical spectral and polarization profiles.



Study of high power CBC fiber laser systems with non-equal splitting

High power coherent beam combination (CBC) with non-equal splitting ratio beam splitters (BS) is studied. A BS-based two-channel CBC laser system has

Beam Splitters: Types, Applications, and Selection

Beam splitters are an essential component in modern optics. They play a critical role in many fields, including scientific research, medical imaging,



The Buyer's Guide to Beam Splitters , Blue Ridge Optics

Neglecting polarization effects can lead to unwanted losses, reduced accuracy, and inconsistent results. Therefore, understanding and accounting for the polarization of your light source



Transmission and Reflection by Beamsplitters

Transmission and Reflection by Beamsplitters - Java Tutorial A beamsplitter is a common optical component that partially transmits and partially reflects an



How to Calculate Splitter Loss in Optical Fiber

Calculating splitter loss in optical fibers is essential for designing efficient optical networks. Understanding the types of splitters, their impact on network performance, and how to measure their

High extinction ratio and low loss polarization

A polarization beam splitter (PBS) with a high extinction ratio that is based on multimode interference (MMI) is proposed and experimentally





Understanding Optical Splitter Loss

Understanding splitter ratios and insertion loss is fundamental to building a reliable fibre optic network. The key takeaway is that every split



1075KWHH ESS

BROADBAND BEAM SPLITTER WITH LOW WAVEFRONT ERROR

Through the optimization of the process, it was possible to significantly reduce the losses of the beam splitter. The deposition of the filter had to be performed with the highest precision as, due to the



How to Calculate Splitter Loss in Optical Fiber

These measurements help in verifying the actual splitter loss against the theoretical values, crucial for troubleshooting and network maintenance. Section 5: Additional Losses in Fiber



Beam Splitter , Precision, Applications & Design Principles

Explore the precision, applications, and design principles of beam splitters, essential for advancements in scientific research and technology.



Beam Splitting

4 Beam modulations 4.1 Beam splitters
Metasurfaces are a solution to the existing problems of conventional beam splitters composed of natural materials [14, 206-212] which impose a relatively

How Does a Beam Splitter Work?

Beam splitters are designed with coatings optimized for specific wavelengths or broad spectral bands, such as visible, ultraviolet, or infrared light. Using a beam splitter outside its specified wavelength



Polarizing Beamsplitters , MEETOPTICS Academy

A beamsplitter is an optical component designed to separate collimated light into two distinct beampaths with a specific ratio of transmissions. A polarizing beamsplitter



Beam Splitters - optical power splitter, beamsplitter, thin

The optical losses vary significantly between different types of devices. For example, beam splitters with metallic coatings exhibit relatively high losses, whereas

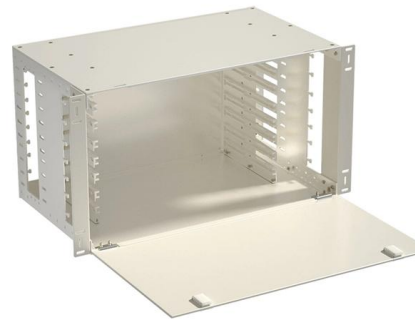


Beam Splitter Input-Output Relations

Beam Splitter Input-Output Relations The beam splitter has played numerous roles in many aspects of optics. For example, in quantum information the beam splitter plays essential roles in teleportation,

Beamsplitters: A Guide for Designers , Optics

Nonpolarizing plate beamsplitters Nonpolarizing plate beamsplitters have been designed for use in situations in which the polarization characteristics of the



Design and Implementation of Ultra-Compact Grating-Based 2x2 Beam

This work provides insights into the design and fabrication issues relating to the ultra-compact grating-based beam splitter. It reveals the necessary approach to be taken in optimizing the beam splitter for



Overcoming Polarization-Dependent Loss (PDL) with Polarization Beam

Polarization-dependent loss presents significant challenges in modern optical communication systems, particularly in high-speed networks where signal integrity is paramount. The



Equalities and inequalities from entanglement, loss, and beam splitters

The paper is structured as follows. In Section I, we review the basic notions of beam splitters and entanglement, loss channels, quasiprobability distributions and the QCS as a nonclassicality measure.

Low loss silicon nitride based multimode interference beam splitter in

Design and simulation process for a multimode interference (MMI) device based on a silicon nitride platform presented. The objective is to achieve a low-loss MMI model as a beam





Optimizing Optical Systems with PBS

Polarizing Beam Splitters (PBS) are crucial components in various optical systems, enabling the manipulation of light based on its polarization state. By integrating PBS into optical

Contact Us

For datasheets, pricing, or custom telecom energy solutions, please visit:
<https://koskolong.co.za>