



**Adam Tas Corridor Energy**

# **Relationship between single-mode fiber diameter and velocity**





## Relationship between single-mode fiber diameter and velocity

---



### Mode Field Diameter (MFD) Matters When Coupling into

As light propagates down a single mode fiber, the beam maintains a cross sectional profile that is nearly Gaussian in shape. The mode field diameter

### WORLD WIDE WEB JOURNAL Home

O'Reilly & Associates, Inc. 103A Morris St.  
Sebastopol, CA United States



### Single Mode Fibers

Single-mode fibre (also referred to as fundamental or mono-mode fibre) will permit only one mode to propagate and, as such, cannot suffer mode delay differences.

### Dispersion in Single-Mode Fibers



This equation provides an order-of-magnitude estimate of the bit rate-distance product BL offered by single-mode fibers. In the next two sections the wavelength

GAIN AN IN - DEPTH UNDERSTANDING OF



- ① LED DISPLAY PANEL
- ② PROTECTOR OPERATION BUTTONS
- ③ NEUTRAL WIRE OUTPUT TERMINAL
- ④ LIVE WIRE OUTPUT TERMINAL
- ⑤ WORKING CURRENT AND VOLTAGE INSTRUCTIONS
- ⑥ FLAME - RETARDANT SHELL

## Single-mode optical fiber

Single-mode fibers are therefore better at retaining the fidelity of each light pulse over longer distances than multi-mode fibers. For these reasons, single-mode fibers



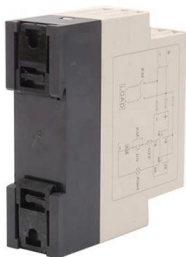
## Tutorial Passive Fiber Optics, Part 4: Multimode Fibers

Figure 1: A single-mode fiber (left) has a core which is very small compared with the cladding, whereas a multimode fiber (right) can have a large core. Multimode



## Singlemode vs Multimode Optical Fibre

Singlemode fibre generally comes with a relatively narrow diameter, through which only one mode will propagate typically in 1310 or 1550nm band wavelength and carries higher bandwidth than





## Optimizing Single-mode Fiber Core Diameter for Efficiency

Explore the significance of core diameter in single-mode fiber for high-performance data transmission. Learn how core diameter impacts efficiency and

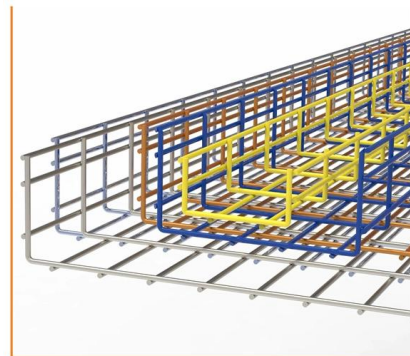


### Ch. 2 final2

2.1 FIBER DISPERSION When one considers an optical fiber, the first parameter of interest is the value of dispersion. This is simply because different types of optical fibers have different dispersions. For a

## Single Mode Fibers

12.4 Single Mode Optical Fibers If the core diameter is reduced sufficiently, fibers will support only light traveling collinearly with the axis (known as the LP 01 mode), thereby eliminating modal dispersion.



## Lecture 4

Given the parameters  $n_1$ ,  $n_2$  and a fixed wavelength, a fiber is single mode if the core radius  $a$  is smaller than a given value (of the order of 10  $\mu\text{m}$  at 1550 nm)



## Dispersion in Single-Mode Fibers

Dispersion in Single-Mode Fibers We have seen that intermodal dispersion in multimode fibers leads to considerable broadening of short optical pulses (- 10



## VIAMI Reference Guide to Fiber Optic Testing Vol

Types of Fiber 6

## Single-Mode Fiber and Multiple-Mode Fiber

Mode indicates the transmission path of optical signals that enter a fiber at a certain angular velocity. A fiber supports as many transmission modes as its diameter allows. Fibers are classified into single





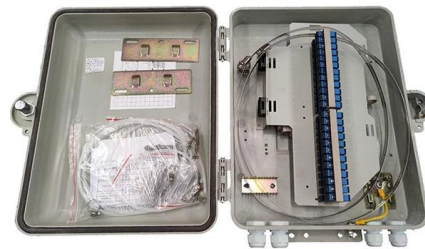
## Lecture 4

Modes in Step Index Fibers Definition: Modes are light intensity profiles (patterns) that propagate down the fiber maintaining their transversal field shape



### Single Mode vs. Multi Mode Fiber: Key Differences

Explore the differences between single mode and multi mode fiber optics. Understand their dimensions, transmission rates, attenuation, applications, and



???

The differences between single mode vs multimode fiber lie in the core diameter, wavelength, bandwidth, color sheath, distance, and cost. Read the complete

### Single-Mode Fiber Optics

In this paper we summarize the fundamentals of nonlinear refractive index change (RIC) in single-mode ytterbium-doped optical fibers induced by optical pulses at 980 nm and derive the

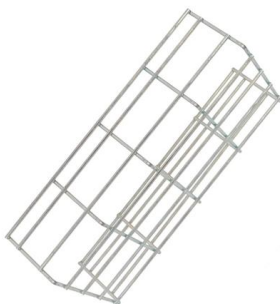
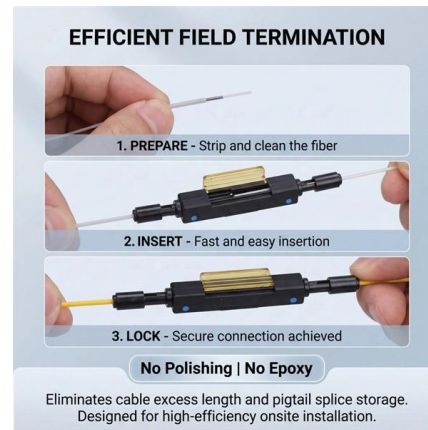


## MODE FIELD DIAMETER OF A SINGLE-MODE FIBER Aim

Knowledge of MFD is very useful in estimating joint loss between two single-mode fibers, coupling efficiency, cutoff wavelength, backscattering characteristics, microbending losses, and even

## Unlocking Single Mode Fibers

The core diameter of a single mode fiber is typically around 8-10 microns, which is much smaller than the core diameter of multimode fibers. This small core diameter allows single mode



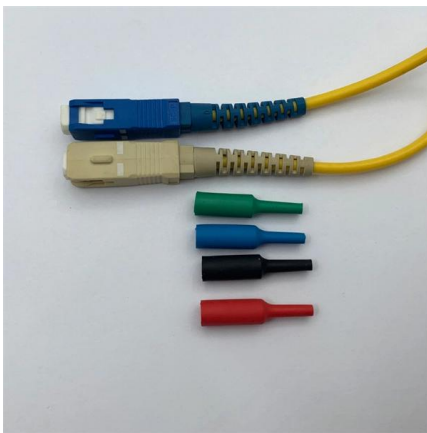
## Fiber Optic Cable Types - Multimode and Single Mode

Single Mode cable has a much smaller core (8-9um) than multimode cable and uses a single path (mode) to carry the light. The main difference between single mode OS1 and OS2 is cable



## Relationship Between Fiber and Yarn Strength , Request PDF

The relationship between yarn strength and fiber strength is not simple (Pan et al. 2001). The failure of a yarn made by spinning staple fibers is normally due to fiber slippage and not fibers

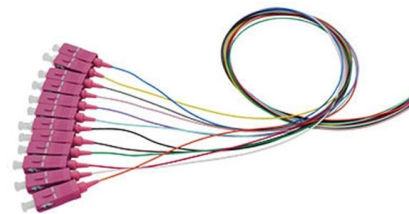


## Chapter 6 Propagation of Light and Modes in Optical Fibers

Propagation of Light and Modes in Optical Fibers  
Distance transfer of electromagnetic energy (i.e., energy transfer between remote points in space) in the spectral range of optical frequencies (light)

## The Number of Modes in an Optical Fiber Defined by

By understanding the relationship between core diameter, wavelength, and the number of modes, engineers can design optical communication systems



## The Advantages of Single-Mode Fiber in Telecommunications

The primary technical distinctions between single-mode and multimode fiber optic cables begin with their core diameters. Single-mode fiber optic cables feature a significantly smaller core



## Unlocking Single Mode Fibers

Explore the world of single mode fibers and their impact on optical properties of materials, enhancing performance in various applications.



## Fiber-Optic Mode Theory

Fiber-Optic Mode Theory This chapter describes optical-fiber mode theory, presenting theoretical analyses and deriving formulas for the fluctuation equation, vector modes, normalized cutoff

## Mode Radius - diameter, spot size, Gaussian beam,

How can one estimate the mode radius for a step-index fiber? What is the difference between mode field area and effective mode area? Why is the mode field





## Contact Us

---

For datasheets, pricing, or custom telecom energy solutions, please visit:  
<https://koskolong.co.za>