



**Adam Tas Corridor Energy**

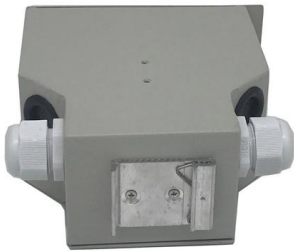
# **Relay Protection Commissioning Operation**





## Relay Protection Commissioning Operation

---



### Commissioning tests of protection relays at site

PDF file

### Microsoft PowerPoint - RelayTesting Lecture.pptx - IEEE

When testing relays on energized equipment, safety precautions must be observed. Wear appropriate PPE and use safety gear as required. Check that you are only exposed to

### Protection Relay Testing and Commissioning

Commissioning tests are done to show that a particular protection configuration has been correctly used prior to setting to work.



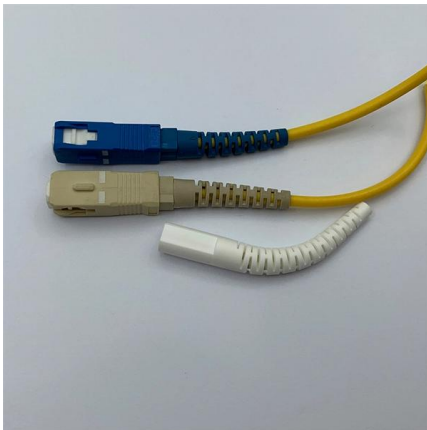
### INSTALLATION AND MAINTENANCE GUIDELINE FOR PROTECTIVE RELAY

Thorough installation testing and a preventive maintenance program verify the integrity of these protective relay systems. Comprehensive commissioning tests of new protection systems is a crucial



## Commissioning of Protective Relay Systems

Commissioning of Protective Relay Systems Karl Zimmerman, Schweitzer Engineering Laboratories, Inc. Abstract--Performing tests on individual relays is a common practice for relay engineers and



## Commissioning of Protective Relay Systems

Certainty in commissioning protective relaying systems is, perhaps, the most difficult part of implementing new technologies. However, there are many tools and approaches we can use to

## Relay Protection Engineer: Relay Testing and Commissioning

Relay testing is the process of verifying that protective relays are calibrated correctly and functioning accurately. Commissioning, on the other hand, is the final stage that confirms the entire integration of



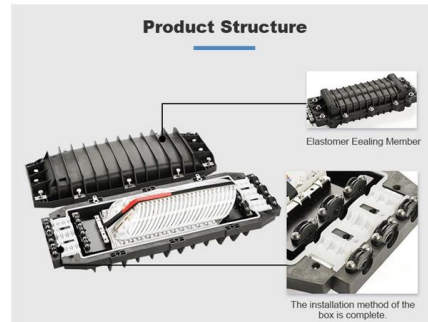
## IEEE PSRC, WG I-25 May 10, 2017 Commissioning Testing of Protection

ne protection schemes is considered the most complex of all relay testing. The complexity of the relays employed, the complexity of settings necessary to verify optimum performance, the use of various



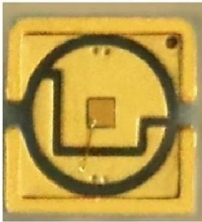
## Testing & Commissioning Protective Schemes

The purpose of the commissioning tests is to ensure that connections are correct, that the performance of current transformers and relays agrees with



## Relay Maintenance and Testing

ERS relay technicians understand the critical nature of working with an active protection scheme and the impact testing and maintenance has on critical system operation.



## testing & commissioning of the protection relays

This portable test kit offers a comprehensive range of testing capabilities, such as injecting signals, simulating fault conditions, and assessing relay responses, to



## Installation and commissioning

Protection relays are not only intended for protecting the main application, but should also fulfill requirements regarding control, measurement and communication, for instance.



## Operation, maintenance, and field test procedures for

Operation, maintenance, and field test procedures for protective relays and associated circuits (photo credit: Omicron) The protection circuits



## Installing and Maintaining Protective Relay Systems

Ensuring that protection systems operate reliably is crucial, and a good preventive maintenance program ensures that protection and relay systems function properly without causing additional problems.

## Relay Protection Engineer: Relay Testing and Commissioning

Relay Testing & Commissioning Mastery  
Optimizing Relay Testing and Commissioning in Electric Power Systems  
The modern electric power transmission, control, and distribution network demands



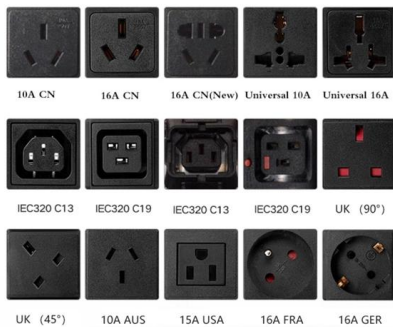


## Protection Relay Testing Overview

This document discusses testing procedures for protection relays, including type tests, routine factory production tests, commissioning tests, and periodic

### Commissioning of protection relays using test equipment and software

Commissioning and maintenance With numerical protection relays commissioning and maintenance has become far less complicated as a result of the information provided by the devices



## Protection Relay Testing and Commissioning

PROTECTION RELAY TESTING AND COMMISSIONING The testing and verification of protection devices and arrangements introduces a number of issues. This happens because the main function

### (PDF) -Relay testing and commissioning

Commissioning tests verify installation correctness and correct relay functionality before system operation begins. Secondary and primary injection



## Protective Relay Commissioning Guide

This document discusses commissioning and maintenance of protective relays. It recommends secondary injection testing with relays isolated as the preferred test



## Commissioning of Protective Relay Systems

Performing tests on individual relays is a common practice for relay engineers and technicians. Most utilities have a wide variety of test plans and practices. However, properly



## Testing & Commissioning Protective Schemes

Generally protective equipment testing may be divided into three stages: Factory tests. Commissioning tests. Periodic maintenance tests. Factory





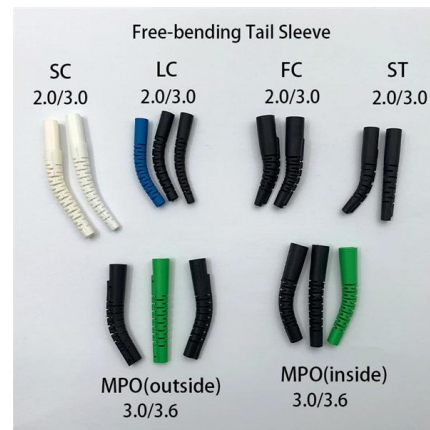
## Protection relays

Protection relays Numerical relays are based on the use of microprocessors. The first numerical relays were released in 1985. A big difference between conventional



## Commissioning of Protective Relay Systems

Commissioning of Protective Relay Systems Karl Zimmerman, Schweitzer Engineering Laboratories, Inc. Abstract--Performing tests on individual relays is a common practice for relay



## Practical Power System and Protective Relays Commissioning

The book explains the theory of power system components in a simple, clear method that also shows how to apply different commissioning tests for different protective relays.



## GE MiCOM P741 Relay for Reliable Busbar Protection

The GE MiCOM P741 Relay represents a significant step forward in busbar protection technology. Its low-impedance differential protection principle, sub-cycle operating speed, and



## Contact Us

---

For datasheets, pricing, or custom telecom energy solutions, please visit:  
<https://koskolong.co.za>