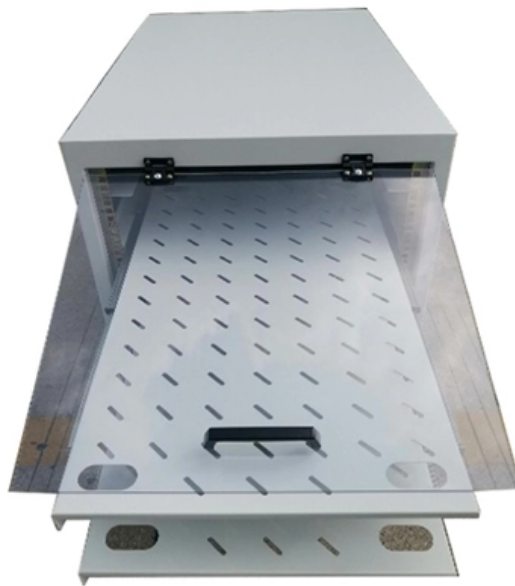




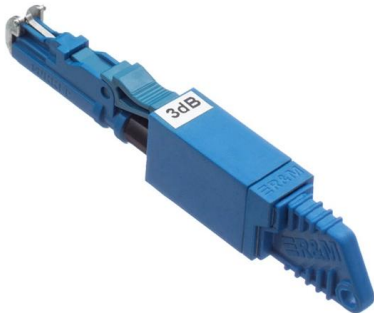
Adam Tas Corridor Energy

Relay Protection Concept and Price





Relay Protection Concept and Price

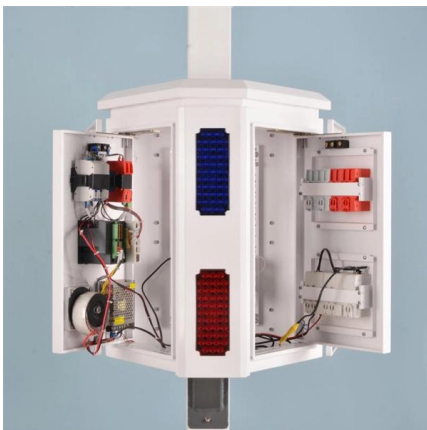


What is Protection Relay?

A protection relay is a crucial component of electrical systems that safeguard infrastructure, employees, and equipment from electric problems and

Protective Relay , Fundamental Requirements of

A Protective Relay is a device that detects the fault and initiates the operation of the circuit breaker to isolate the defective element from the rest of the system.



SIPROTEC Protection Relays , Siemens

Siemens' universal protection relays portfolio includes products such as SIPROTEC 7SX800 and 7SX85 to provide flexibility and cost savings. Our

Merz Price Differential Protection for Generators

Biased Differential scheme (Merz-Price Scheme) for protection of Generators: This is most



commonly used protection scheme for the alternator stator windings. The



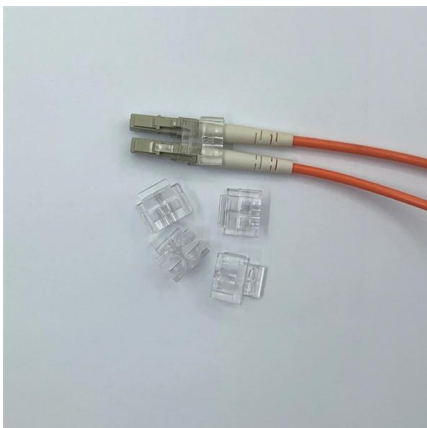
Relay control and protection guides

Protection Relays The relay is a well known and widely used component. Applications range from classic panel built control systems to modern



Introduction to Protective Relaying , Electric Power

Introduction to Protective Relaying What are Protective Relays, or Protection Relays? Protective relays are used in industrial power generation and supply



Protective Relay Market Report: Size, Growth, Trends

Protective Relay Market size was valued at USD 3.1 Billion in 2024 and is expected to reach USD 4.8 Billion by 2032, growing at a CAGR of 6.1% The report provides



Protection Relay : Circuit, Working, Types, Codes & Its

Relays are generally available in different types like reed, protective, thermal, electromagnetism, reed, Buchholz relay, Solid-state, and many more.



Protective relay

Distance relays, also known as impedance relay, differ in principle from other forms of protection in that their performance is not governed by the magnitude of the

Protective Relay: Working, Types, and Applications

Learn about protective relays, their working principle, types, and applications in power systems. Discover how relays protect transformers,



ST ANNES COLLEGE OF ENGINEERING AND TECHNOLOGY

The protective systems include circuit breakers and protective relays, to isolate the faulty section of the power system from the healthy ones.



Relay Protection: Scheme Design And Coordination

Relay protection is the discipline of designing schemes that detect faults, coordinate relays, and isolate equipment without outages. It emphasizes selectivity, coordination, fault response, and system



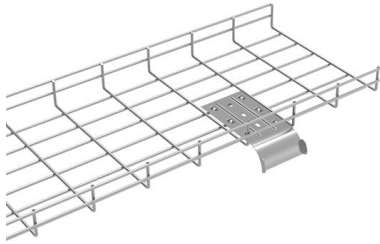
Protective relay

Electromechanical protective relays at a hydroelectric generating plant. The relays are in round glass cases. The rectangular devices are test connection blocks,

doi: 10.1007/978-3-319-20919-7_3

Rules for protecting a network using overcurrent relays. Requirements for instrumentation (number and locations of instrument transformers) and switching apparatus (number and locations of circuit





A Brief Comparison of Motor Protection Relay Price

Motor protection relay price by phase The price of motor protection relays is influenced by the type of phase. The single-phase motor protection

Understanding Protection Relays: Importance and

Discover the importance of protection relays in safeguarding electrical equipment. Learn about types like single-phase, three-phase, voltage, and



Basic Theories of Power System Relay Protection

This chapter first introduces the basic theories of power system relay protection, summarizes the functions and basic requirements of relay protection, and illustrates the basic

Societal and technology trend report

Next, this framework is applied to two representative line-protection schemes - line distance protection and line differential protection - for quantitative evaluation under PEDG conditions.



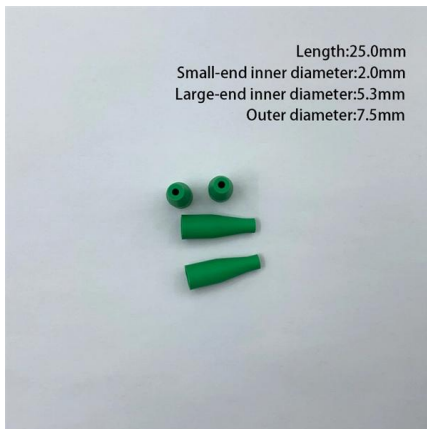


Types of Electrical Protection Relays or Protective Relays

Protective relays can be categorized based on their operating mechanisms into electromagnetic relay, static, and mechanical types.

Fundamentals of Distance Protection

Distance protection is a very extensive aspect of power system protection. This article offers the reader a simple overview of distance protection fundamentals.



Protection relays

Protection relays Numerical relays are based on the use of microprocessors. The first numerical relays were released in 1985. A big difference between conventional

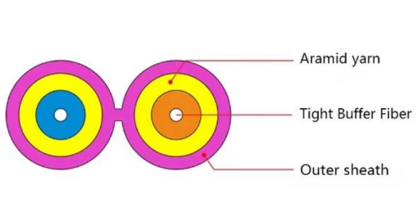
Protective Relaying Principles and Applications

Protective Relaying Principles and Applications
The article provides an overview of protective relaying principles and their applications for high-voltage power system



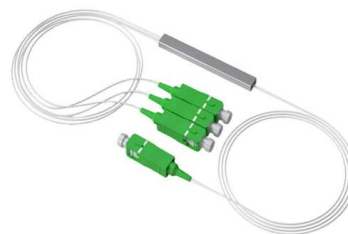
(PDF) A review on protective relays' developments and

inverse time current relays came into practice and the concept of directional discrimination of faults was incorporated in these protective relays (Singh,



What is a Protective Relay? Principle, Advantages,

A protective relay is an electrical component that is designed to trip a circuit breaker when a fault is encountered or identified.



Basic protection relay knowledge

A fast and selective arc fault mitigation for air-insulated LV & MV switchgear and Relion protection and control relays and sensor technology protect staff and plant facilities for many years.



Types of Electrical Protection Relays or Protective Relays

? Key learnings: Protective Relay Definition: A protective relay is an automatic device that senses abnormal conditions in electrical circuits and



Basic Types of Protection Relays and Their Operation

Protective relays are the building blocks used to develop protection systems. Digital relays held an enormous advantage over any of their predecessors with the new ability to add

Protective Relay Market Size, Share, Trends , Growth, 2034

The protective relay market is transitioning from traditional standalone protection systems to integrated, networked, and intelligent protection architectures, aligning with the global trends



The basics of power system protection that every

Introduction to relay protection Protection is the branch of electric power engineering concerned with the principles of design and operation of



Mesh door/glass door optional



Sp-601 glass door



Sp-602 mesh door

Contact Us

For datasheets, pricing, or custom telecom energy solutions, please visit:
<https://koskolong.co.za>