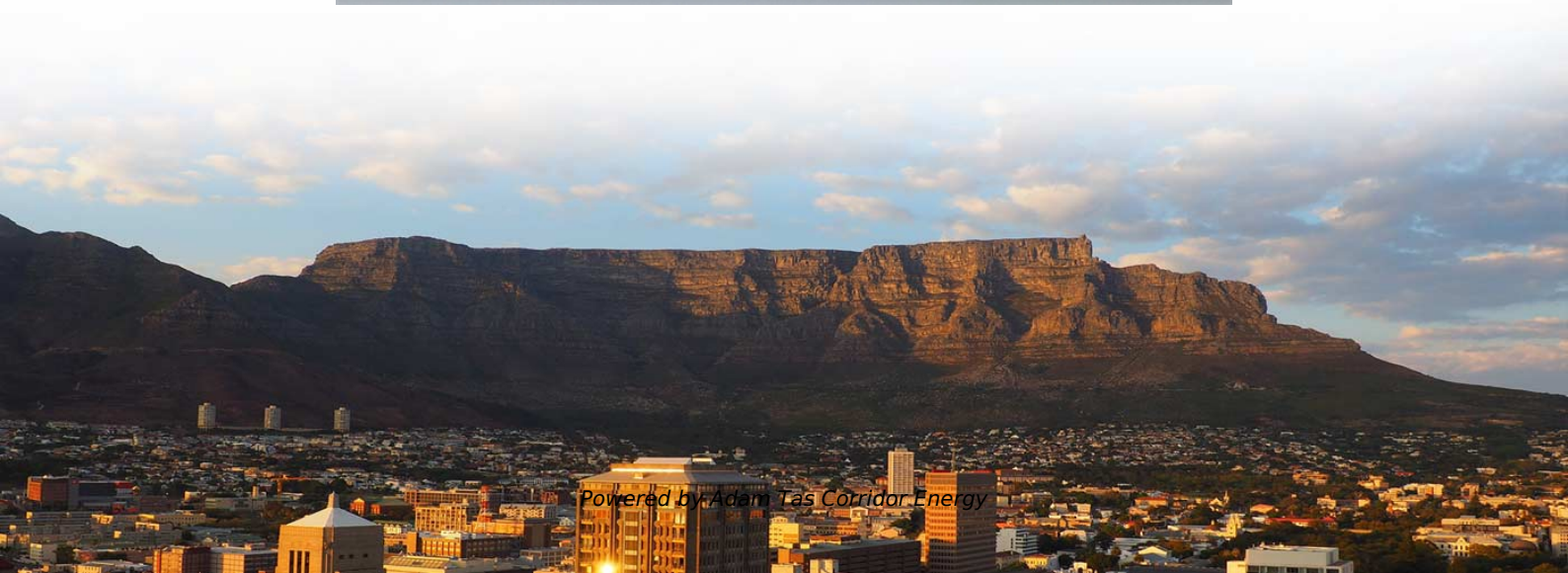




**Adam Tas Corridor Energy**

# **Relay protection extension and time delay**





## Relay protection extension and time delay

---



### Considerations and Benefits of Using Five Zones for Distance Protection

ated and distinct zones for pilot protection and step-distance schemes. This inherently increases the performance, security, and d l zones, many pilot protection schemes are still applied traditionally.

### The fundamentals of protection relay co-ordination and

Among the various possible methods used to achieve correct relay co-ordination are those using either time or overcurrent, or a combination of both.



### Understanding Time Delay Relays , Tameson

Time delay relays provide precise control over the timing of operations. Learn how they work, their types, and wiring diagrams in this article.

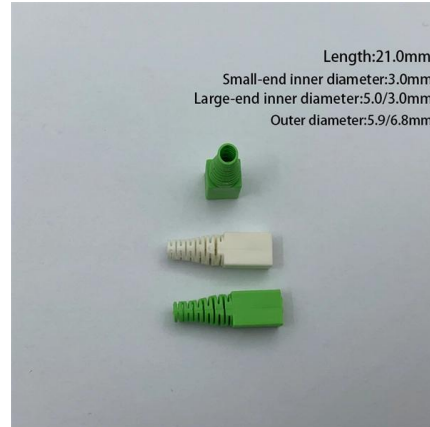


### Power System Protective Relays: Principles & Practices

Protective relays and devices have been developed over 100 years ago to provide

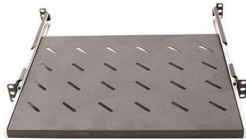


"lastline"of defense for the electrical systems. They are intended to quickly identify a fault and isolate it so the balance of



## Time Delay Relays: Types, Functions, and Applications

Discover the essentials of Time Delay Relays. Learn how they work, types, applications, wiring, and troubleshooting tips for optimal performance.



Webit Cabling

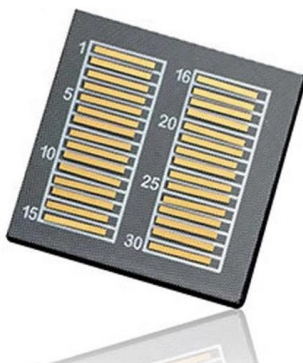
## Fundamentals of Distance Protection

Distance protection is a very extensive aspect of power system protection. This article offers the reader a simple overview of distance protection fundamentals.



## Time Delay Relays Explained

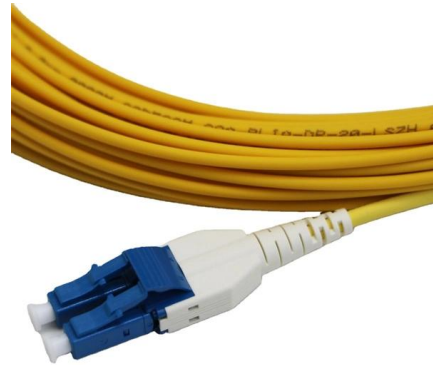
Time Delay Relay Time delay relays are simply control relays with a time delay function built in. They control an event, by energising the secondary





## Relay Coordination Principles , Delgado Relay Protection Reference

Relay coordination is a critical aspect of power system protection that aims to ensure the reliable operation of protective devices in the event of a fault. It involves setting the operating

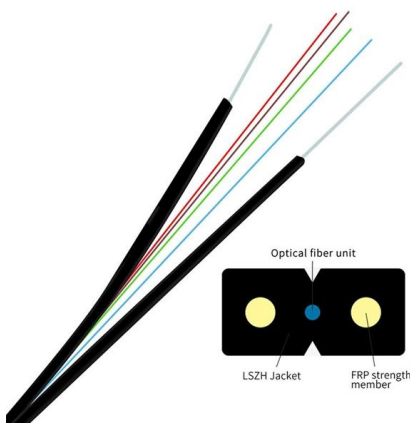


## Protective Device Settings , Delgado Relay Protection Reference

Protective device settings are the values at which the devices are configured to respond when certain conditions arise. These settings determine the characteristics of the device's behavior,

## Time Grading of Distance Relay , Methods , Requirements

Zone 2 operates with a time delay and covers the remainder of the protected feeder and backs up the protection on the next feeder for about 40% of that feeder. After



## Pickup Time and Time Delay in Electrical Protection

This article details the fundamental concepts of Pickup Time and Time Delay within electrical protection systems, their significance, practical application, calculation



## What to Know About Protective Relays , EC& M

Time delay can be added to this type of relay by means of a bellows, dashpot, or a clockwork escapement mechanism. However, timing accuracy is considerably less precise than that of



## Principles and Characteristics of Distance Protection

Distance protection, in its basic form, is a non-unit system of protection offering considerable economic and technical advantages. Unlike

## Time Delay Relays: Complete Guide to Types,

Explore the complete guide on time delay relays including types, functions, and applications in various industries. Learn about their operation,



## HVAC Time Delay Relay: Compressor Protection Guide

Prevent costly compressor failure with HVAC time delay relays. Learn how "off-delay" logic stops short-cycling, correct wiring installation, and VIOX



## over voltage protection

6I am a software engineer with a small amount of experience in electrical engineering that has been tasked with designing an embedded OS for a IDMT relay (uni project). However, I don't understand



## State-of-the-art in the industrial implementation of protective relay

The paper summarizes the operating principles of relay applications, the available measurements used by relays and the protection schemes for various faults that occur frequently in

## Distance Protection Relay Settings (Zone 1, Zone 2, Zone 3)

Distance relays measure impedance ( $Z = V/I$ ) to detect faults. The settings are based on: Line impedance (primary & secondary values).





## Inverse Time Over Current (TOC/IDMT) Relay Trip Time Calculator

The Inverse Time Over Current (TOC/IDMT) relay trip time calculator calculates the protection trip time according to IEC 60255 and IEEE C37.112-1996 protection curves.

## Considerations and Benefits of Using Five Zones for Distance Protection

In the case of electromechanical relays, the same distance zones were applied for both the pilot protection scheme and the time-delayed step-distance scheme. This approach was applied because



## Basic protection relay knowledge

Power system stability means also ability to maintain acceptable voltage. Stability may be lost due to too long clearing time of faults ( too long operate times of protection ) Problem with selectivity can also



## Preparation of Papers in a Two-Column Format

This article illustrates two different techniques namely standalone testing and real-time hardware-in-the-loop testing used for protection relays performance verification. Both techniques are evaluated for



## Distance Protection Schemes: Working Principles,

Below is an overview of several key distance protection schemes, starting with the Zone 1 extension approach and moving through the various

### Distance relay Zone of Protection

The zone 1 elements are usually set with no intentional time delay so that tripping of faults within zone 1 will be as fast as possible. The time delay of zone 2 and zone



**5-INCH COLOR TOUCHSCREEN**  
Intuitive operation, easily accessible with just one touch



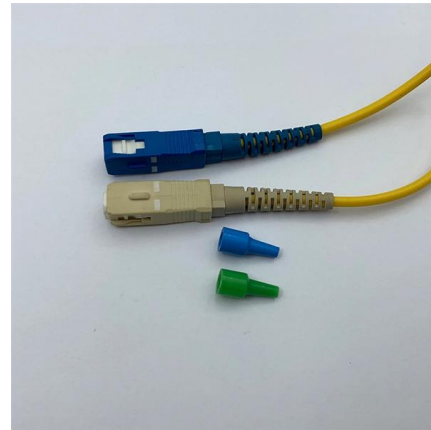
### Distance relay Zone of Protection

Zone Element Time Delays in Distance relay The zone 1 elements are usually set with no intentional time delay so that tripping of faults within zone 1 will be as fast



## Distribution Automation Handbook

Because the protection areas of the interlocking-based protection concept are not overlapping and because they do not reach into the protection area of the next relays in the protection chain, a



**doi: 10.1007/978-3-319-20919-7\_3**

To improve the protection and shorten the average clearing time, one may use relays with the delay depending on the fault current magnitude, thus on fault location.

## Time Delay Relays: Working, Types, and Applications

Learn about time delay relays, their working principle, types, and applications in automation, motor control, and safety systems. A complete guide



## Contact Us

---

For datasheets, pricing, or custom telecom energy solutions, please visit:  
<https://koskolong.co.za>