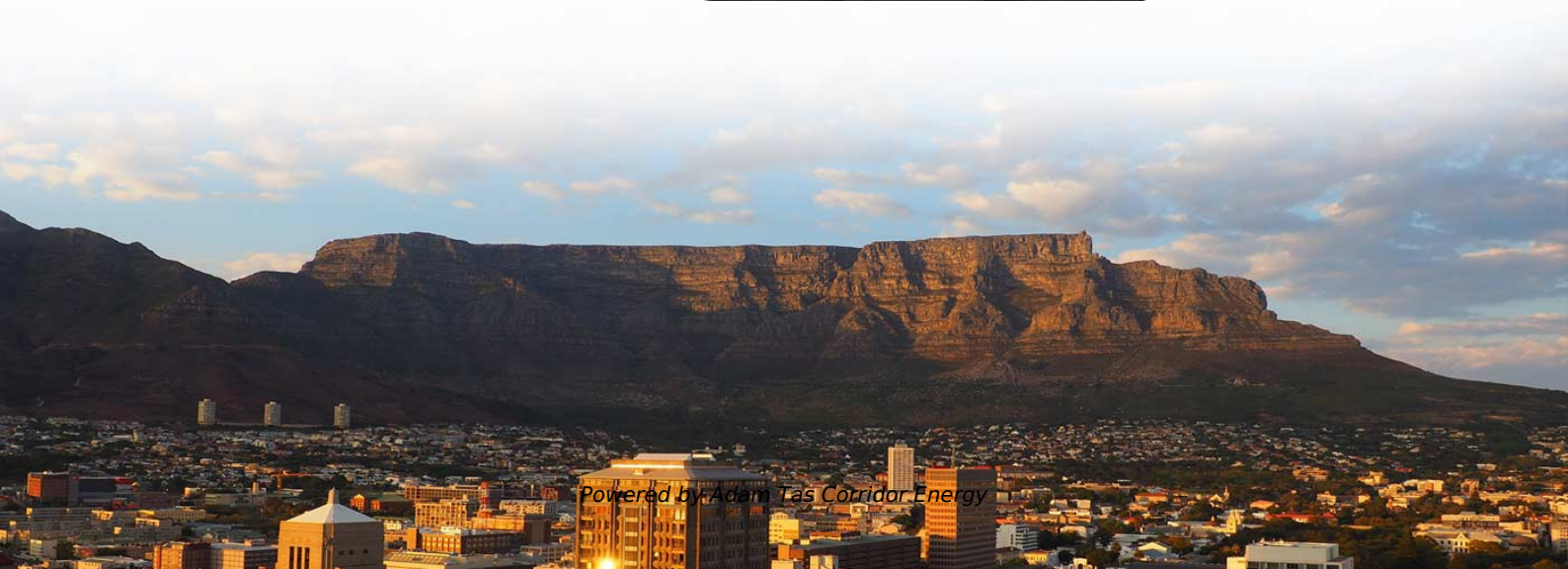




Adam Tas Corridor Energy

Remaining power in the primary distribution box





Remaining power in the primary distribution box



How It Works: Electric Transmission & Distribution and Protective

How It Works: Electric Transmission & Distribution and Protective Measures The electricity supply chain consists of three primary segments: generation, where electricity is produced; transmission, which

primary distribution system

A typical power distribution feeder provides power for both primary and secondary circuits. In primary system circuits, three-phase, four-wire, multigrounded



Understanding Distribution Boxes: Your Guide to Power

Whether you are a professional electrician, a facility manager, or even a homeowner trying to better understand the electrical system of your



Explore Power Distribution Box Types and Functions

Power distribution boxes are used in commercial and residential buildings and are part of the



electrical system, also known as switchboards.



Atlantic International University

Hier sollte eine Beschreibung angezeigt werden, diese Seite lässt dies jedoch nicht zu.

A Definitive Guide To Distribution Boxes

The distribution box acts as the center of power distribution, distributing electricity to all connected devices. A distribution box, also known as a distribution board, panel board, breaker



Power Distribution Board: Uses, Role & How its Work

Learn about power distribution boards: their uses, role, and how they work to manage electrical power distribution efficiently and safely in various setups.



The Ultimate Guide to Distribution Box Types

In any electrical system, the distribution box is the heart and brain, a critical component that safely manages and distributes power from the main source to



The Primary and Secondary distribution in electrical

Understanding the fundamental distinction between Primary and Secondary distribution in electrical systems is pivotal for designing efficient and

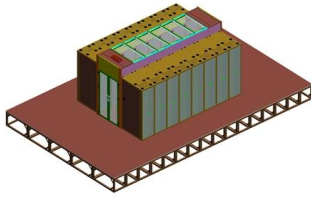
Distribution Boxes: Types and Functions

A distribution boxes acts as the load center and main distributor of electrical power within a building. Also called a distribution board, panel board,



Distribution Automation Handbook

In primary distribution substations, the main protective device for the installed equipment against overvoltages is the zinc oxide cap-less surge arresters. The selection of suitable surge arrester



What is a Distribution Box? - A Comprehensive Guide

A distribution box organizes and controls power flow, ensuring safety and efficiency in electrical systems.



Ordering information

MQ	1	2	3	4	5	6
Model	SP200	SP202	SP204	SP206	SP210	SP214
Product name	Patch Panel	Patch Panel	Patch Panel	Patch Panel	Patch Panel	Patch Panel
Illustration						
MQ	1	2	4	1	2	4
Maximum number of cores	144	288	576	144	288	576
Product size (including modules and adapters)	482.0*507*64 mm	482.0*507*81 mm	482.0*507*177 mm	482.0*507*64 mm	482.0*507*81 mm	482.0*507*177 mm
Standard color code	RAL9005	RAL9005	RAL9005	RAL9005	RAL9005	RAL9005
Inventory	✓	✓	✓	✓	✓	✓

Power Distribution Boxes Explained Simply

It's often called a PDU, distro, or distribution panel. You can think of it as the hub of your electrical system. Instead of sending all power directly to each

Primary and secondary power distribution systems

Primary distribution systems Primary distribution systems consist of feeders that deliver power from distribution substations to distribution





Electrical Power Distribution System:

Electrical power is the most widely used form of energy because it can be transmitted and distributed far more easily than other forms, such as

The Complete Guide to Distribution Box: Installation, Types & More

Blog The Complete Guide to Distribution Box: Installation, Types & More By Admin Aug 2, 2025
No Comments # distribution box Introduction
Electrical systems power our homes, offices, and



The Meaning and Function of Primary, Secondary, and Tertiary

This structure ensures effective power management, safety, and reliability in complex electrical systems, particularly on construction sites or large-scale projects.



What does a power distribution box do ?

The main function of the distribution box is to receive power and distribute it to various circuits. It can protect circuits, regulate voltage, and isolate and control

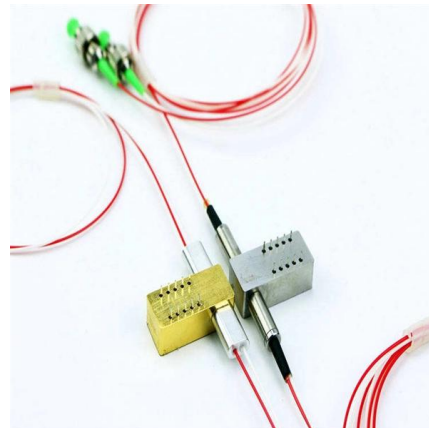


What Is a Distribution Box?

Distribution boxes work by distributing electrical power. They receive electrical power from the main power line -- or another primary power line -- and

Power Distribution Box Essentials: Functions, Types

A power distribution box electrical captures electricity from the primary power supply and allocates it securely to different electrical circuits in a building



Single Phase Distribution Box Definition and Main Parts

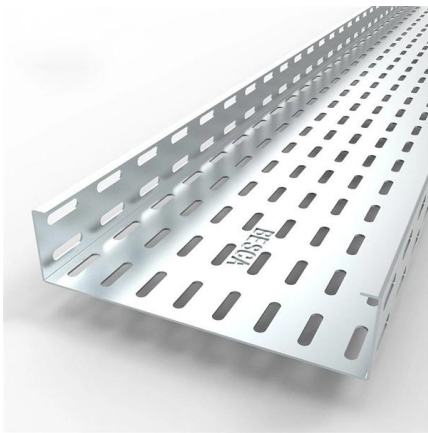
A single phase distribution box controls and protects home or office circuits. Learn its definition, main parts, and how it ensures electrical safety.





Distribution Boards

Distribution boards, often referred to as electrical panels or breaker boxes, serve as the nerve center of any electrical system. Here we explore the crucial parts of a distribution board and gain insights into



Distribution Box Guide: Types, Components & Solutions

The primary function of a distribution box is to route electricity from the main supply to different circuits throughout a building. This ensures that all

Distribution Boxes Explained: Types, Functions, and

Learn about distribution boxes, their types, functions, and safety features to ensure efficient and secure electrical power distribution in any building.



Distribution Box and Selection Guide

Different settings have distinct electrical requirements: Residential: Homes typically require single-phase power and a Distribution Box with fewer



Distribution Boxes Types - The Complete Guide

The power distribution boxes deliver electricity from the main electrical main to other circuits. Several distribution boxes are designed for specific use in



The Meaning and Function of Primary, Secondary, and Tertiary

Follows the principle of "one machine, one switch, one RCD, one box, one lock," ensuring no single switch controls multiple devices. This explanation aims to clarify the roles and functions of

Understanding Distribution Boxes: A Comprehensive Guide

A distribution box, also known as a power distribution box or electrical distribution box, is used to distribute electrical power safely to multiple





Contact Us

For datasheets, pricing, or custom telecom energy solutions, please visit:
<https://koskolong.co.za>