



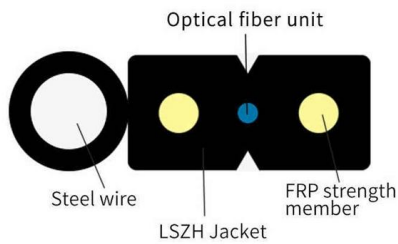
Adam Tas Corridor Energy

Remote Monitoring Type of 5G Base Station Cabinet Power Distribution System





Remote Monitoring Type of 5G Base Station Cabinet Power Distribution



5G Base Station Power Supply with Battery & DC Distribution

This 5G base station power supply system integrates battery backup, DC power distribution, and advanced control modules to ensure reliable energy support for critical telecom infrastructure.

Collaborative optimization of distribution network and 5G base stations

Afterward, a collaborative optimal operation model of power distribution and communication networks is designed to fully explore the operation flexibility of 5G base stations, and



5g base station

A 5G base station is a complex system that combines advanced antenna technologies, digital signal processing, and network architecture to provide high-speed, low-latency wireless

The "Nerve Endings" of Smart PDUs in Telecom

Imagine the Smart Power Distribution Unit as the nerve endings inside your 5G telecom cabinet.



These advanced systems sense and respond to



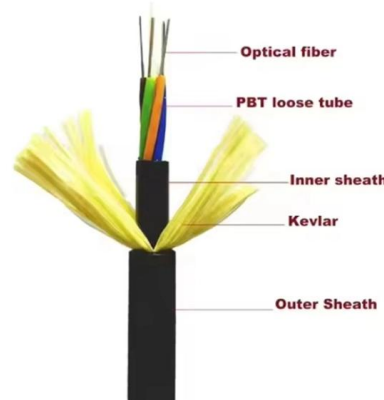
Strategy of 5G Base Station Energy Storage Participating in the Power

Firstly, the potential ability of energy storage in base station is analyzed from the structure and energy flow. Then, the framework of 5G base station participating in power system frequency regulation is



Optimal energy-saving operation strategy of 5G base station with

To further explore the energy-saving potential of 5 G base stations, this paper proposes an energy-saving operation model for 5 G base stations that incorporates communication caching and



Optimization Control Strategy for Base Stations Based on

On the basis of ensuring smooth user communication and normal operation of base stations, it realizes orderly regulation of energy storage for large-scale base stations, participates in auxiliary peak





Hybrid Control Strategy for 5G Base Station Virtual

With the rapid development of the digital new infrastructure industry, the energy demand for communication base stations in smart grid systems is



Energy-efficiency schemes for base stations in 5G heterogeneous

In today's 5G era, the energy efficiency (EE) of cellular base stations is crucial for sustainable communication. Recognizing this, Mobile Network Operators are actively prioritizing EE for both

Selecting the Right Supplies for Powering 5G Base

It includes everything needed to power 5G base station components, including software design and simulation tools like LTpowerCAD and LTspice. These tools



Compact Outdoor Cabinet for 5G & 4G Base Stations

Space-saving outdoor cabinet designed for 5G and 4G base station equipment. Provides reliable protection and easy deployment in telecom networks.



An optimal dispatch strategy for 5G base stations

Therefore, this paper proposes an optimal dispatch strategy for 5G BSs equipped with BSCs. Firstly, a joint dispatch framework is established, where the idle capacity of batteries in 5G BS



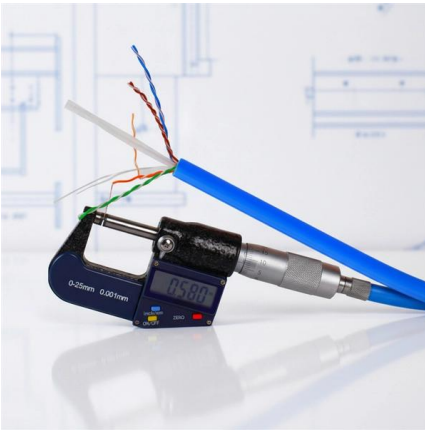
What is 5G base station architecture?

The higher the frequency, the more data it transmits. 5G core network architecture operates on different frequency bands, but it's the higher frequencies

Electric Load Profile of 5G Base Station in Distribution Systems Based

Abstract This paper proposes an electric load demand model of the 5th generation (5G) base station (BS) in a distribution system based on data flow analysis.



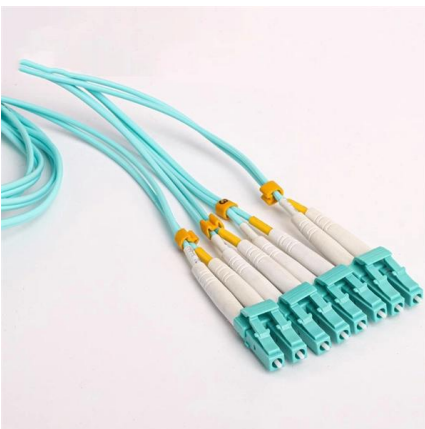


5G Edge Intelligence-based Refined Power Distribution Monitoring

The operating environment of electric meter boxes is very complex and contains various emergencies such as power theft and fire. When emergency occurs, it is urgent to dispatch

5g base station architecture

5G base station architecture is characterized by its flexibility, virtualization, and the ability to support diverse services through network slicing. The separation of CU and DU, along with the

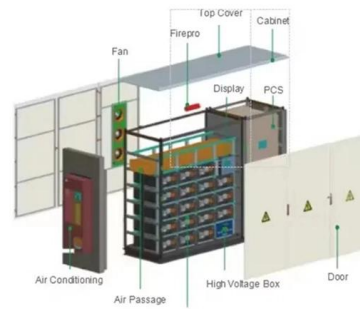


Simplifying Your 5G Base Transceiver Station

With a large number of wireless base stations and remote units deployed globally, improved power amplifier efficiency can significantly reduce

Complete Guide to 5G Base Station Construction , Key Steps,

Core Functionality: Often referred to as the "core" of the power system, this device handles AC/DC distribution, rectification, filtering, and remote monitoring.



Telecom and Cell Tower Monitoring and Management

AggreGate is an all-in-one solution for centralized monitoring of a cell tower infrastructure. A tower management solution offers remote control, monitoring

All-Optical Backplane	Many-Degree WSS	Digital Optical Layer
<ul style="list-style-type: none"> → Zero fiber connections at the optical layer, dense layer of equipment design, and stable routing for 20 years → Innovative multi-level dualproof and optical port alignment technologies, ensuring high reliability 	<ul style="list-style-type: none"> → 32 degrees, non-blocking flexible grooming → Cost-effective, OX-free, high reliability, 3x wavelength dropping efficiency compared with traditional boards 	<ul style="list-style-type: none"> → Use of OFDM pilot tone and high-precision wavelength monitoring technologies to evaluate the fiber quality, wavelength resource, and performance of the OXC system, achieving digital OAM

A Voltage-Level Optimization Method for DC Remote

The optimal voltage level for different supply distances is discussed, and the effectiveness of the model is verified through examples, providing



Energy Management of Base Station in 5G and B5G: Revisited

Since mmWave base stations (gNodeB) are typically capable of radiating up to 200-400 meters in urban locality. Therefore, high density of these stations is required for actual 5G deployment, that leads to





5G Base Station Power Upgrade: Custom Rectifier Module Solutions

Upgrade 5G base station power in outdoor, indoor, and shared cabinets with custom rectifier module solutions for efficient, scalable, and reliable performance.



Energy Management of Base Station in 5G and B5G: Revisited

Due to infrastructural limitations, non-standalone mode deployment of 5G is preferred as compared to standalone mode. To achieve low latency, higher throughput, larger capacity, higher reliability, and

5G Antenna Distribution in Substations Considering

This paper takes the Pareto optimal solution of signals received by in-station monitoring equipment, and points points the 5G base station antenna in the substation based on MOPSO



Bivocom Base Station Monitoring: Solutions for 5G

Base station monitoring is critical for network reliability. However, operators face significant challenges: rising energy costs, thermal risks from high



Equipment Needed to Build a 5G Base Station

Monitoring devices such as cameras and sensors used to monitor and maintain the operational status of base station equipment in real time.
Note:



Electric Load Profile of 5G Base Station in Distribution Systems Based

This paper proposes an electric load demand model of the 5th generation (5G) base station (BS) in a distribution system based on data flow analysis. First, the electric load model of a 5G BS is

Base Station Microgrid Energy Management in 5G Networks

The 5G BSs powered by microgrids with energy storage and renewable generation can significantly reduce the carbon emissions and operational costs. The base station microgrid energy management





Optimal configuration of 5G base station energy storage considering

A multi-base station cooperative system composed of 5G acer stations was considered as the research object, and the outer goal was to maximize the net profit over the complete life cycle of

Contact Us

For datasheets, pricing, or custom telecom energy solutions, please visit:
<https://koskolong.co.za>