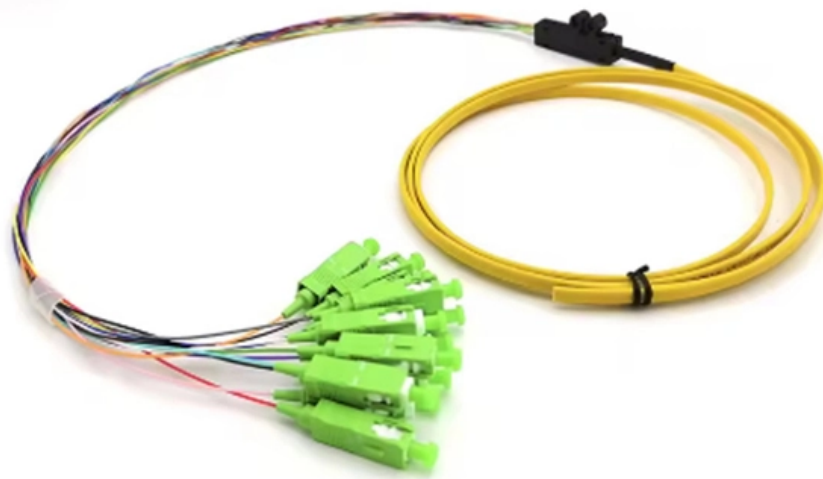




**Adam Tas Corridor Energy**

# **Replacing the switch inside the distribution box**





## Replacing the switch inside the distribution box

---



### **Distribution Box Installation: A Complete Guide to Safe**

The distribution box, often referred to as a breaker box, fuse box, or electrical panel, is a critical component of any electrical system. It acts as the central hub for

### **How to Replace a Breaker Box , Homeowner's Guide to**

A circuit breaker box is responsible for distributing electricity safely throughout your home. We show you how to replace a breaker box and stay safe.



### **How to Repair or Replace a Damaged Electrical Box**

Restore the structural integrity of your electrical system. Learn safe diagnosis, non-invasive repair methods, complete box replacement



### **How to Wire a Light Switch**

It's important to know the basics of how these switches control your electricity, especially if you're planning to complete any DIY electrical



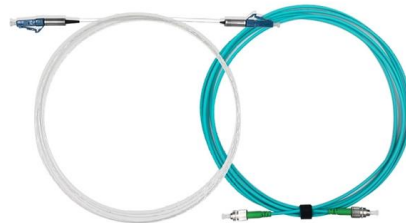
### **Guide to replacing components inside the distribution box**

Most D-boxes are made from durable concrete, tough plastic, or fiberglass - materials chosen to withstand decades buried in corrosive soil. Inside, you'll find inlet and outlet ports, leveling



### **How To Replace Switch Box**

This article will guide you through the process of replacing a switch box in a safe and efficient manner. Before beginning the replacement process, it



### **How to Replace an Electrical Breaker Panel**

5.5 Reinstall the old or new breakers to service those same cables into their proper slot inside the new panel box and reinsert the cables into the



## The Best Solution to Install Components Inside The

What is the trickiest installation problem of components inside the distribution box? When we were installing circuit breakers and switches under

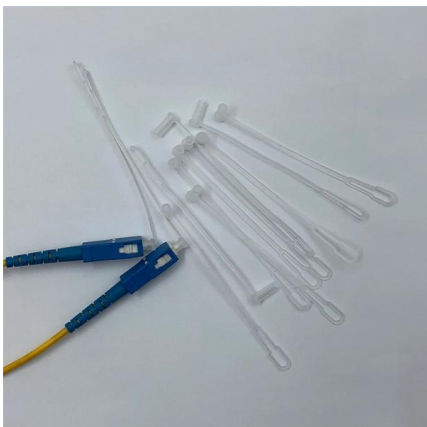
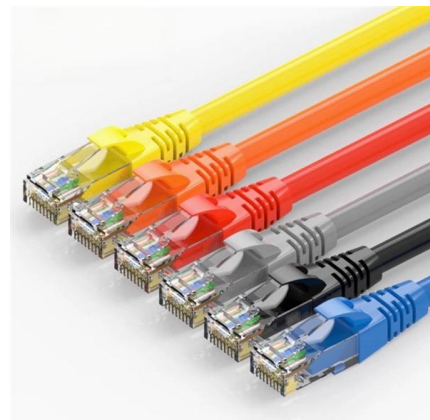


## Understanding Distribution Boxes: A Comprehensive Guide

A distribution box, also known as a power distribution box or electrical distribution box, is used to distribute electrical power safely to multiple

## Can You Replace a Breaker Box By Yourself? (Here's

Replacing your breaker box is a pretty big job, but if you're willing to learn about the electricity in your home and how to match up the circuits to the breaker box, you



## Electrical Panels: Replacement Signs, Maintenance,

The electrical panel--also called a circuit breaker box or service panel--is the central distribution point that connects the primary outside wire to



## how to replace electrical switch box\_switchgear\_Switchboard\_circuit

The following are the detailed steps and precautions for replacing an electrical switch box, which are applicable to home DIY scenarios:

I. Preparation WorkTools and Materials -  
\*\*Tools\*\*: Screwdriver



## How to Install and Wire a Switch Box: A Step-by-Step

This article provides a detailed guide on how to wire a switch box correctly, including the different types of switches and their connections. Whether you are a beginner

## How to Replace an Electrical Box

Previous owners added a heat fan switch and the box size no longer met code. I demonstrate full replacement with a deeper box.



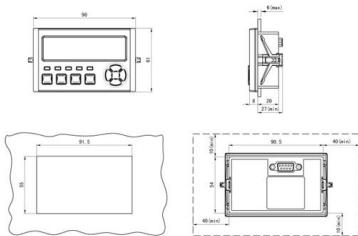
## How to Replace a Defective Electrical Switch or Outlet

Remove the outlet or switch cover plate. Traditional outlet plates usually have one screw per outlet (but some - including GFCIs - have two) and switch plates two per switch. There may be multiple switches or outlets in one box, but you can replace just one if needed. If you need to replace more than



## Distribution Box Wiring Steps

?Wiring and Binding? ?Wiring Direction?: Wiring between the main circuit breaker and each branch circuit breaker in the box generally goes on the left, and



## Step-by-Step Guide: Changing a Switch Made Easy!

Use a screwdriver to remove the switch plate cover, then unscrew the switch from the electrical box. Disconnect the wires from the old switch and connect them to the new switch,

## How to Replace an Electrical Outlet: A Beginner's Guide

Electrical outlets can get chipped or cracked over time. Improve the function and aesthetics by learning how to change an electrical outlet.





## Distribution box

In this article, you will learn everything you need to know about installing, expanding or replacing a distribution box - from the legal basis to practical implementation.

## how to change electrical box\_switchgear\_Switchboard\_circuit breaker

To replace an electrical box (such as a power distribution box or a meter box), the corresponding solution should be selected according to the type and scenario.



## How to Replace Your Old Junction Box: A Step-by-Step

Press the wires inside the junction box. Screw the cover plate into the box. Step 7: Restore Power Go back to your circuit breaker panel and flip the

## How to Wire changeover switch & distribution board (DB) , Step by step

In this video, I'll show you **\*\*how to wire a changeover switch and distribution board (DB)\*\*** step by step. and how to wire changeover switch, changeover swit



### The Best Solution to Install Components Inside The

The trickiest part of installing inner components of a distribution box is that the components' heights are irregular. E-Abel's flexible mounting bracket can



### How to Replace a Septic Distribution Box

The distribution box of the septic tank system is used to evenly distribute the wastewater from the septic system to the dispersal field. Over time,



### What is an Electrical Distribution Box? A

Components Inside an Electrical Distribution Box  
Opening up an electrical distribution box might look like stepping into a maze of wires, switches,



## how to replace electrical switch box\_switchgear\_Switchboard\_circuit

- **\*\*Install the switch/socket\*\***: Align the wire terminals with the screw holes of the switch, tighten them to fix it, and ensure that the switch panel fits closely to the wall.



## Explore Power Distribution Box Types and Functions

Power distribution boxes are used in commercial and residential buildings and are part of the electrical system, also known as switchboards.



## Distribution box

Yet the distribution box is a highly complex component that not only ensures safe power distribution, but is also responsible for protection in an emergency. In this article, you will learn everything you need



## DB Box (Distribution Board Box) Installation

DB Box Installation & Replacement: Enhancing Electrical Safety in Singapore Homes In Singapore, ensuring the safety of electrical systems within homes is



## Contact Us

---

For datasheets, pricing, or custom telecom energy solutions, please visit:  
<https://koskolong.co.za>