



Adam Tas Corridor Energy

Requirements for Identification of Lines in Primary Distribution Boxes





Requirements for Identification of Lines in Primary Distribution Box

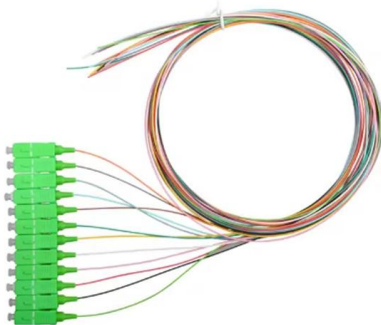
Strategies for electrical labeling and documentation

These requirements include both a hazard classification as well as technical information for energy calculation and the level of PPE required. These standards also refer to UL 969 for label



COMPONENTS OF DISTRIBUTION SYSTEM

In general, the distribution system is the electrical system between the sub-station fed by the transmission system and the consumers meters. It generally consists of feeders, distributors and the



IDENTIFICATION FOR ELECTRICAL SYSTEMS

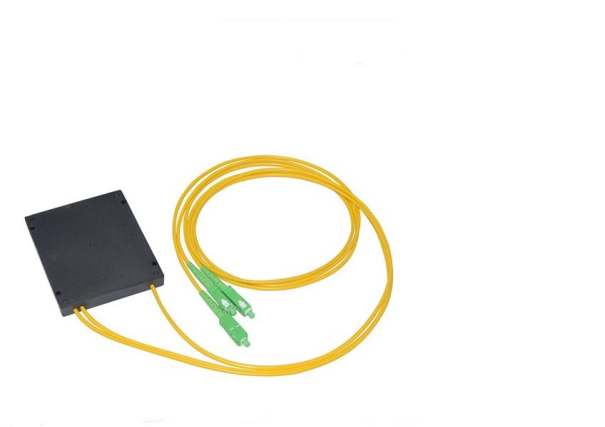
Provide adhesive marking labels on the outside cover of all junction, pull, outlet and connection boxes that identify voltage and all contained circuits. Provide labels for all Wiring Devices indicating the

Design requirements and standards for low voltage

Regularly inspect and maintain your distribution box to catch issues early and ensure safe



operation. Design requirements for low voltage distribution



SECTION 260553

The identification shall be made with clear self-adhesive tape with black 10-point letters. Apply the tape at the top of the device plate. Receptacles specified or noted on the drawings to be engraved, shall

Safety requirements of distribution box

The distribution box has the characteristics of small size, simple installation, special technical performance, fixed location, unique configuration function, not limited by



TransGrid Substation Design Standards

This document outlines TransGrid's primary design standard for substations. It provides requirements for drawing and documentation, high voltage design, high



Primary Guide

Customer primary service installations that do not meet BC Hydro requirements may be connected and maintained under a special provision through a distribution operating order.



A Definitive Guide To Distribution Boxes

Power distribution boxes are beneficial because they eliminate the requirement for each output device to be connected directly to the power source. As a result, there's no reason to utilize

Electrical

All control-wire terminations are to be identified by tubular sleeve heat shrink-type markers to agree with wire marking identification on manufacturer's equipment drawings.



Getting important labelling right leaves a lasting impression

Getting important labelling right leaves a lasting impression What you leave behind after an installation speaks volumes. While electrical labelling is most importantly



The Meaning and Function of Primary, Secondary, and Tertiary

The terms primary, secondary, and tertiary distribution boxes are relative. Let's make an example for clarity: A newly constructed residential area introduces a 10kV power line to a substation. From the



Distribution Boxes Types - The Complete Guide

The power distribution boxes deliver electricity from the main electrical main to other circuits. Several distribution boxes are designed for specific use in

Size determination, installation method and wiring mode

The distribution box is the central hub of the home circuit and the general control of our daily power consumption. It is an indispensable electrical equipment. If there



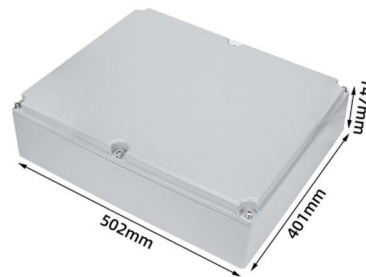


Guideline

This Standard covers all labelling to be secured to distribution primary equipment on Horizon Power's distribution network and represents the minimum requirements applicable to all labels applied to the

The installation requirements for the distribution box

Learn how to install a distribution box safely and correctly. Covers wiring, placement, standards, and expert tips for a compliant setup.



Distribution Automation Handbook

In primary distribution substations, the main protective device for the installed equipment against overvoltages is the zinc oxide cap-less surge arresters. The selection of suitable surge arrester

Circuit Numbering and Labeling for Electrical Equipment

LLNL-MI-823076 This standard describes requirements for numbering and labeling of real property electrical distribution equipment, circuits, and site lighting at Lawrence Livermore National Laboratory.



Electrical Identification

The following guidelines should apply in almost all cases for panels with an Amp rating greater than 200. For those items which cannot be produced from these guidelines, then further guidance should be



The basics of primary distribution circuits (substation

Primary-loop systems are sometimes used on distribution systems for areas needing high reliability (meaning limited long-duration interruptions). In the



How to Install a Cable Distribution Box Safely and

Cable distribution box can be customized according to special application requirements, such as in high temperature, high humidity, corrosive or





Primary and secondary power distribution systems

Primary distribution systems Primary distribution systems consist of feeders that deliver power from distribution substations to distribution

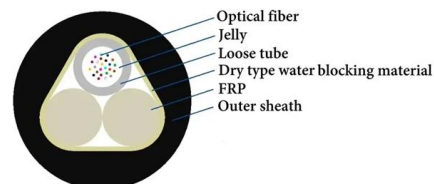


Strategies for electrical labeling and documentation

Electrical equipment must be correctly labeled and documented. Follow these strategies to achieve enhanced safety and documentation. Learning objectives Understand codes, standards, and

Distribution Boxes: Types and Functions

Learn what an electrical distribution box (DB/distribution board) is, its main components (MCB/RCCB/RCBO, SPD, busbar) and common types.



Power Distribution Boxes Explained Simply

Learn what a power distribution box is, how it works, key components, types, and why it's vital for safe and efficient electrical systems.



Primary and secondary power distribution systems

Rural areas with low-density loads are usually served by overhead primary lines that are mounted on poles and contain distribution transformers,



Wiring regulations: what are the labelling requirements?

So, while you could create and print on-site, for convenience, using earlier electronic labellers would still require more time and effort compared to

Understanding Circuit Breaker Wiring Configurations in

Correct wiring methods for circuit breakers within distribution boxes are fundamental to ensuring electrical safety and compliance with established codes.





Contact Us

For datasheets, pricing, or custom telecom energy solutions, please visit:
<https://koskolong.co.za>