



**Adam Tas Corridor Energy**

# **Requirements for Safety-Regulated Distribution Boxes**





## Overview

---

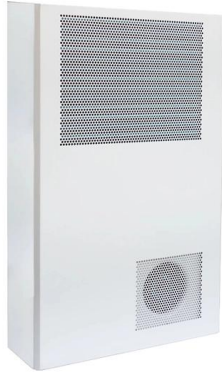
Ensure safe placement: install in dry, accessible areas with good ventilation and at appropriate height (typically ~1. Design requirements for low voltage distribution boxes cover NEC, IEC, and safety standards to ensure reliable, compliant electrical installations. The distribution box has the characteristics of small size, simple installation, special technical performance, fixed location, unique configuration function, not limited by the site, relatively common application, stable and reliable operation, high space utilization, less land occupation and. But what exactly does it take for these critical components to earn international certification?

Let's unpack the requirements that transform ordinary electrical.



## Requirements for Safety-Regulated Distribution Boxes

---



### Key Material Requirements for Distribution Box

Learn the key material requirements for distribution box, Discover how the right materials ensure long-lasting performance and safety.

### Installation requirements for distribution boxes

Distribution boxes shall be made of non-combustible materials; open distribution boards may be installed in production places and offices with low electric shock risk; enclosed cabinets shall



### Explosion-Proof Distribution Boxes: Special Installation Requirements

Seven workers vanished after a deafening blast tore through a California fireworks facility last July - a chilling reminder of why explosion-proof electrical equipment installation isn't just regulation, it's life

### The installation requirements for the distribution box

Learn how to install a distribution box safely and correctly. Covers wiring, placement, standards,



and expert tips for a compliant setup.



### **Hse alert 14 2017 electrical distribution boxes , DOCX**

HSE Alert #14 emphasizes the need for compliance with electrical distribution box standards across all projects by January 31, 2018. Key requirements include



### **Design requirements and standards for low voltage**

You need to understand the main standards and codes that guide the safe design and use of low voltage distribution boxes. These rules help you meet



### **Latest Requirements for Distribution Box Installation under the US**

The Heart of Your Electrical System Think of your home's distribution box as the Grand Central Station of your electrical system. Just like travelers need clear pathways and safety





## Safety requirements for distribution box

2? The manufacture and installation of distribution box and switch box shall meet the following requirements: (1) The distribution box shall be made of iron plate or other fire-proof insulating



## Distribution Boxes Explained: Types, Functions, and

Learn about distribution boxes, their types, functions, and safety features to ensure efficient and secure electrical power distribution in any building.

### 1910.303

Except for underground box covers that weigh over 45.4 kg (100 lb), doors and covers of enclosures used solely as pull boxes, splice boxes, or junction boxes shall be locked, bolted, or screwed on.



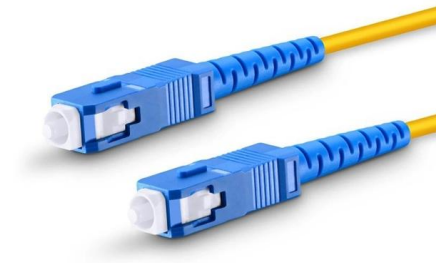
## How to Install a Cable Distribution Box Safely and

In modern electrical systems, cable distribution boxes (also known as electrical distribution boxes or distribution boxes) play a crucial role as the key



## Guardians of Safety: A Comprehensive Guide to

Stringent electrical codes and regulations govern the design and installation of electrical boxes. This commitment to compliance ensures that power distribution



## Installation Standards and Safety Precautions for Distribution Boxes

Switch box shall be distributed by the final sub-distribution box. 2. The power distribution box and switch box must be rainproof and dustproof. 3. When the construction site stops working for

## Using the Safety Distribution 'R' Box

Discover EU rules on the restriction of hazardous substances in electrical and electronic equipment (RoHS in EEE).





## 1915.181

De-energizing the circuit shall be accomplished by opening the circuit breaker, opening the switch, or removing the fuse, whichever method is appropriate. The circuit breaker, switch, or fuse location

## Requirements And Specifications For Installation Of

The installation requirements and specifications of Distribution box involve many aspects, including site selection, fixing method, wiring specifications



## Safety requirements for distribution box

Power and lighting shall be set separately. 2? The manufacture and installation of distribution box and switch box shall meet the following requirements: (1) The distribution box shall be made of iron plate

## Understanding Distribution Boxes: A Comprehensive Guide

Distribution box What Is a Distribution Box Used For A distribution box is used to receive electrical power from a main supply and distribute it to



### **Safety requirements of distribution box**

The distribution box and switch box shall be made of steel plate (thickness 1.2-2.0mm) or flame-retardant insulation material. The distribution box is the control



WebiTelecomms Cabling

### **Enclosures and Distribution boxes , Sonderhoff**

The lifelines of highly automated industrial production for electrical distribution and for the control and safety technology of manufacturing plants come together in



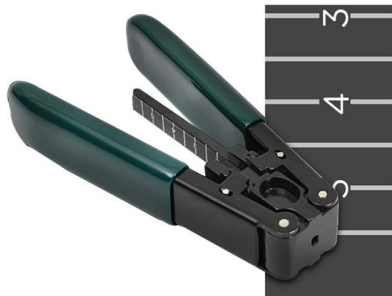
### **How To Maximize Worksite Safety When Using Power Distribution Boxes**

Power distribution boxes are designed to be rugged, durable, and dependable in even the most challenging situations and outdoor environments. Safety Standards for Temporary Power



## Requirements for internal components of distribution boxes for

Let's unpack the requirements that transform ordinary electrical cabinets into globally compliant safety guardians. In our interconnected world, electricity follows the same physical laws whether you're in



## Technical Requirements for Distribution Box in Electrical Industry

16. The distribution box system drawings are shown in the attached drawings. The above is the technical requirements of distribution box. On the premise of ensuring safety, the distribution box is still

## The Provision of First Aid Boxes at the Workplace

We continue to receive enquiries relating to the provision of first aid boxes at work. Regulation 3 (1) ; (2) and (3) of the General Safety Regulations to



## Medicines: packaging, labelling and patient information

How to package medicines for sale and what information you must provide to consumers and healthcare professionals.



## Contact Us

---

For datasheets, pricing, or custom telecom energy solutions, please visit:  
<https://koskolong.co.za>