



Adam Tas Corridor Energy

Requirements for Vertical Installation of Cable Trays in Basements



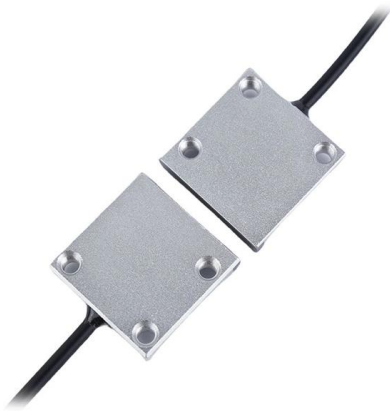


Overview

Cable Types: Only use conductors rated for open-air environments, such as Tray Rated (Type TC) or Metal-Clad (Type MC) cables. These systems, made from metal or plastic, are open structures designed to support electrical conductors, ensuring proper organization and safety. You should consider it as a series of instructions that make the buildings resistant to. The Cable Tray ng standards, performance standards, test standards and application in this document have been tested extensively by competent professional engineers completely installed, without damage either to conductors or. Article Summary: A compliant cable tray installation requires a thorough understanding of NEC Article 392, proper structural support, and precise installation techniques.



Requirements for Vertical Installation of Cable Trays in Basements

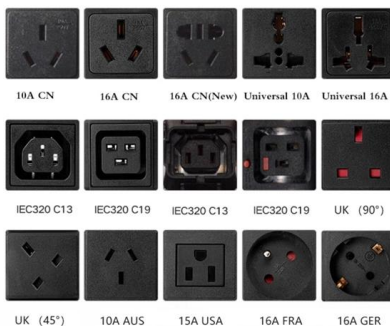
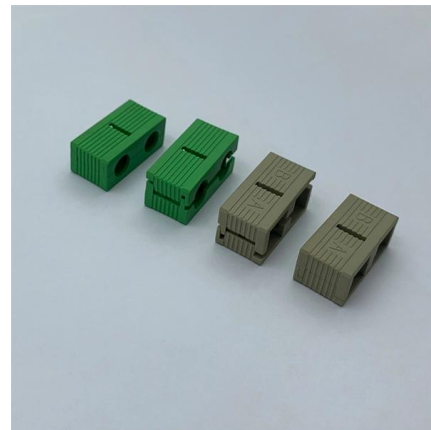


NEC Article 392: Cable Tray Systems

It provides rules for acceptable wiring methods that can be installed in cable trays, including conditions for use. It addresses uses permitted and not permitted for

Safely Installing, Maintaining and Inspecting Cable Trays

Review the proper methods for safely installing, maintaining and inspecting electrical cable trays; Provide information regarding the hazards of overloaded cable trays;



Installation Procedure for 1200mm Wide Cable Tray in Basement

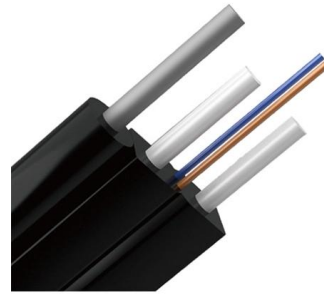
Adhering to IS 1255:1983, the following step-by-step procedure ensures proper installation of a 1200mm wide cable tray in a basement setting.

Cable Tray Technical Guide A practical guide to product selection and

A practical guide to product selection and



installation This guide for engineers and installers has been developed by ABB as a practical reference regarding cable tray characteristics, installation, and



GENERAL INFORMATION

In vertical installations, the weight of the suspended cable creates a tensile load on itself and is the factor, from a cable perspective, that limits the height of vertical installation for a tight buffer cable.

CABLE TRAY INSTALLATION PROCEDURE

5. Cable tray installation shall preferably be installed flat in buildings or operating structures. Tray shall run as far as possible under flooring and walkways. Only in



Best practice guide to cable ladder and cable tray

Cable ladder and cable tray systems The following recommendations are intended to be a practical guide to ensure the safe and proper installation of





GUIDE CABLE TRAYS TECHNICAL

Specifies requirements for metal cable trays and associated fittings designed for use in accordance with the rules of Canadian Electrical Code, Part I and the National Electrical Code®

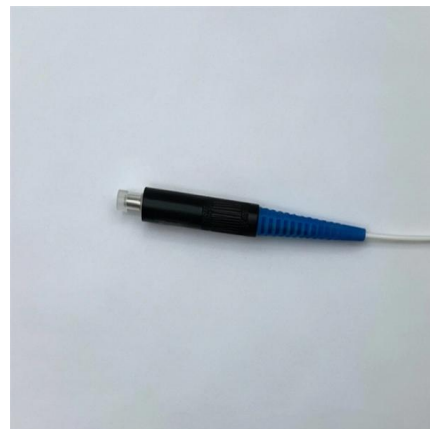


Cable Tray Installation Method Statement

Below is the detailed cable tray installation method statement not only for cable tray but also applicable for GI ladder and trunking for indoor and outdoor applications

12-SDMS-06

Carbon steel cable trays intended for installation in corrosive or highly corrosive environments with severe alkaline and acidic conditions shall be hot-dip galvanized zinc after fabrication.



CABLE TRAYS GENERAL INFORMATION AND

Cable tray systems are to be installed so they are accessible. If possible 300mm minimum should be left above or between installed systems to allow for cable



NEC Article 392 Guide: Ensuring Compliance for Cable

Master NEC Article 392 with our comprehensive guide. Learn essential cable tray requirements for installation, grounding, and fill capacity to



Technical Guidelines for Cable Tray Installation and

Cable tray installation must comply with specific technical standards to ensure electrical safety, system reliability, and long-term maintainability. This document

Cable Tray Technical Guide A practical guide to product selection and

This guide for engineers and installers has been developed by ABB as a practical reference regarding cable tray characteristics, installation, and requirements.



Beama Best Practice Guide , Installation Of The System , Cable

Cable ladders, cable trays and their supports should be strong enough to meet the load requirements of the cable management system including cables and any future cable additions and any other

A Guide to Installing and Supporting Electrical Cable Trays

This guide covers the critical steps, from selecting the right electrical cable tray and performing accurate cable fill calculations to managing a safe cable pull through



FAQ , Cable Tray Institute

For vertical installations, the cables may hang away from the cable tray if not tied down. Although this section of the NEC does not require cable tie down in horizontal, it may be necessary to meet other





What is a Vertical Cable Tray?

What is a vertical cable tray? This guide explains its types (ladder, solid-bottom), benefits for safety & organization, and key applications in data



Master Cable Tray Installation: A Professional Step-by

Learn how to install cable trays for large-scale projects with our professional, step-by-step guide covering industry standards, safety protocols,

Cable Tray Installation Rules (NEC 392) - Electrical Trader

The 2026 NEC introduced an important update: cable trays must have at least 12 inches of clear vertical space above them to allow for installation and maintenance access.



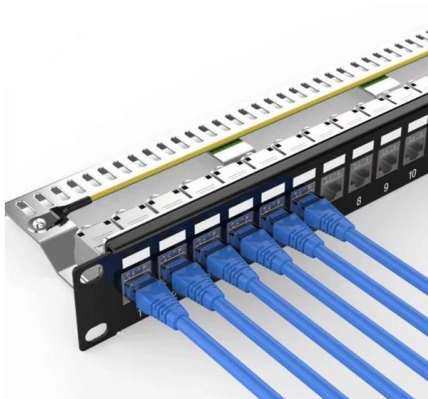
Cable Tray Spacing Standards for Installation and Safety

Proper installation can significantly reduce electromagnetic interference, prevent fire hazards, and improve overall efficiency. This article



Codes and Standards , Cable Tray Institute

The Cable Tray Institute is making available the current edition of this practical guide for the proper installation of aluminum or steel cable tray systems. These guidelines will be useful to engineers,



Vertical & Overhead Installation of Cable Trays and Wire Mesh

Yes, wire mesh baskets and cable trays can be installed vertically or overhead, and they absolutely should be in many cabling projects. Whether routing Cat 6 cables in a tight riser space or

Method Statement installation of Cable Trays and Ladders

This method statement covers the site installation of the cable tray & ladders and the requirements of checks to be carried out.





Contact Us

For datasheets, pricing, or custom telecom energy solutions, please visit:
<https://koskolong.co.za>