



Adam Tas Corridor Energy

Requirements for power line laying in communication equipment rooms





Overview

These guidelines cover the clearances from the power conductors, the requirements for insulation, earthing and bonding, and the protective procedures to avoid interference and damage from the electromagnetic fields generated by the nearby power conductors and lightning. Clearances depend on the total count of station cables, both in the front and rear of all equipment racks or other enclosures. The Telecommunications Design Guidelines are for all planned building projects, either new builds or renovations to existing builds, on the U of A campus. Stakeholders such as Facilities Management, the PMO, architects and engineers that design physical pathways for the telecommunications cables. Before beginning equipment operations, the employer must: (1) Identify the work zone by either: (i) Demarcating boundaries (such as with flags, or a device such as a range limit device or range control warning device) and prohibiting the operator from operating the equipment past those boundaries.



Requirements for power line laying in communication equipment ro

Telecommunication Room (TR) Requirements & Standards v3.2

A typical telecommunication room (TR) will have one 4-post rack for electronic equipment, one 2-post rack for the cabling, and a vertical manager in-between. Racks must have square holes for mounting.



Telecommunications Guidelines

At the Main Equipment Room (MER) serving a building, electrical power requirements for the room are dependent upon the equipment load and should be coordinated with

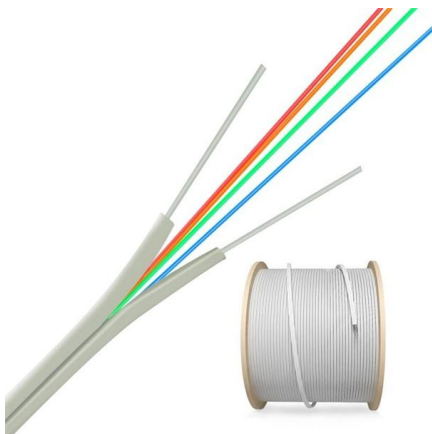


Table of Contents

Identify and label each Equipment Room and Telecommunication Room with a unique identifier derived from the University's Design Document Standards. The labels shall be permanent and consistent

D60 -Communications Equipment Room

The Communications Equipment room Facilities Standard establishes a series of guidelines for



specifying this particular item on any construction project at the University.



MTP MPO SC-Type Fiber Adapter



ITU-T Rec. K.109 (11/2015) Installation of telecommunication

This Recommendation provides guidelines for the installation of telecommunication equipment and/or antennas on utility poles carrying power distribution lines. The power lines considered are those

Telecommunications Room Requirements , PDF

The document outlines requirements for telecommunications spaces including their location, size, doors, floors, walls, ceiling, electrical power, lighting, environmental



Standards for Telecommunication Rooms , Information

A grounding and bonding system, tying together all of the telecommunication rooms to the building ground must be installed. See TIA-607 Commercial Building



Communication Room Design , Cabinet room design

Communication Room Design When designing a communications room the space required needs to take into consideration, the current requirements and expected



Telecommunication Room (TR) Requirements & Standards v3.2

A minimum of two dedicated non-switched 3-wire 120 volt AC quad outlets are required for equipment power; each one on a separate branch circuit. Branch circuits for equipment power shall be protected

Telecommunications Design Standards

All electrical lights, electrical receptacles, card access systems, and HVAC units serving all Telecom Rooms, shall be supplied via emergency generator power during commercial power outages.



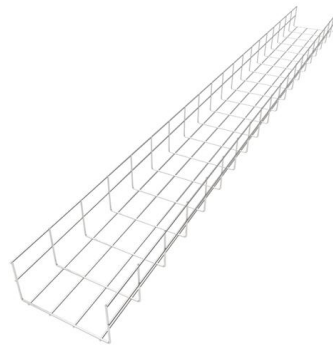
Requirements for the Design of ICT rooms

The following plan drawings are intended as examples or illustrations of how server rooms, equipment rooms, telecommunications rooms and bays may be furnished. Information about power supply can



Telecommunications Infrastructure Specifications

Room Use - The Construction Professionals will design and construct the Telecommunications Rooms to house only telecommunications and information technology functions



COMMUNICATION SITE BUILDING DESIGN AND INSTALLATION

The entry of antenna transmission lines into a communications building or room requires a weatherproof, commercially made port assembly specifically designed for this purpose.

Communication Rooms

Electrical rooms on upper floors should be located to allow efficient distribution. Size and locate rooms to allow equipment removal and maintenance. Electrical rooms





SECTION 271100 -- COMMUNICATIONS EQUIPMENT ROOM

Telecommunications Rooms shall be stacked vertically on each floor, where a Telecommunications Room on each floor is required. No plumbing, HVAC, or fire protection pipes,

eCFR :: 29 CFR 1926.1408 -

§ 1926.1408 Power line safety (up to 350 kV)--equipment operations. (a) Hazard assessments and precautions inside the work zone. Before beginning equipment operations, the employer must: (1)



ICT NETWORK STANDARDS

The Building Communications Room shall be responsible for supporting Campus switching and Routing equipment and distributes network connectivity throughout building via floor level general

SECTION 271100 -- COMMUNICATIONS EQUIPMENT ROOM

1.2 ELECTRICAL POWER The equipment to be installed in the room dictates what power receptacles must be provided and where. cifically for IT Equipment use must be dedicated



Guidelines for Grounding and Bonding Telecom

This standard specified requirements for a ground reference (ground busbar) in each telecommunications space, including the telecommunications entrance room (s),

Power line safety (up to 350 kV)--equipment operations.

Conduct a planning meeting with the operator and the other workers who will be in the area of the equipment or load to review the location of the power line (s), and the steps that will be implemented



STS 1000 Wiring Guidelines

Equipment rooms and telecommunications rooms must be large enough to house equipment, controllers, equipment racks, fiber optic equipment, and Service Provider lines.



SPECIFICATION 271100 COMMUNICATIONS CABINETS AND

This section includes the specifications for constructing and building out of Telecommunications Equipment Rooms (MDF/IDFs) to be used for supporting telecommunications



Section 271100

RCDD: Registered Communications Distribution Designer
Entrance Telecommunications Room (ETR): An enclosed architectural space for housing telecommunications equipment, cable terminations, and

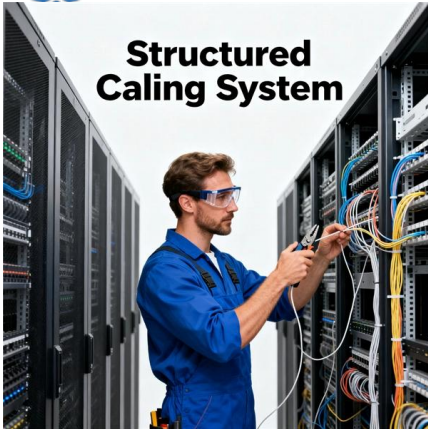
1910.268

In joint lines where the power voltage is greater than 750 volts but less than 34.5kV phase to phase (20 kV to ground), wet poles being placed, moved or removed shall be insulated with either a rubber



Specifications for Networking Standards

IT Services will work together with project members to agree a network design that includes the size, location and number of communication rooms (CR); and the required quantity, capacity of cabinets



27 11 00

The following electrical provisions are required for the Main Telecommunications Equipment Room (ER): A separate supply circuit serving the room shall be provided and terminated in its own electrical



IEEE 525-2007_accepted

Substation communications requires multi-conductor cables to transfer signals at low voltage and current levels between intelligent electronic devices (IEDs) at the substation and communication

Contact Us

For datasheets, pricing, or custom telecom energy solutions, please visit:
<https://koskolong.co.za>