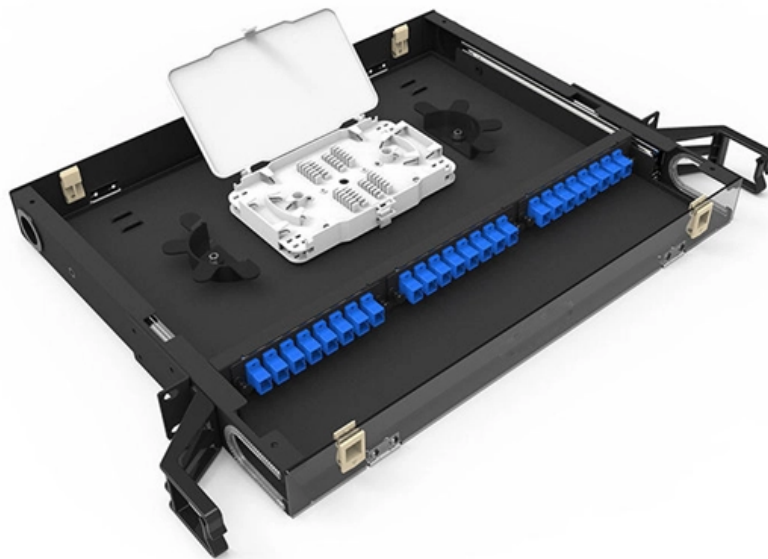




Adam Tas Corridor Energy

Requirements for repeated grounding of incoming distribution boxes



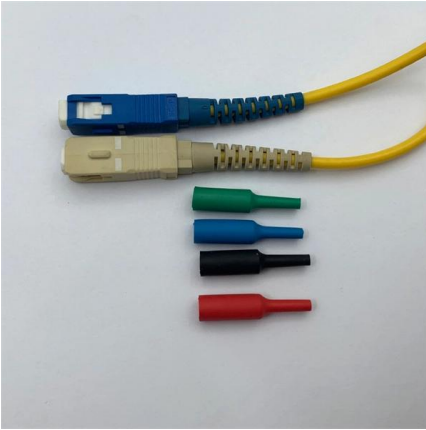


Overview

7 Provide conduit grounding bushings, bonded together and connected to the equipment enclosure on all incoming and outgoing conduits on distribution switchgear and switchboards, distribution panels and on all conduits over 1-1/4" diameter at all panelboards, pull. If you're working with electrical systems, you know that grounding isn't just some bureaucratic requirement—it's literally the difference between a safe, functional system and a potential disaster. Today, we're diving deep into the world of distribution box grounding, breaking down the standards. 26 mm² (10 AWG) ground wire must be used, and in all other markets a 6 mm² must be used. The recommended practices in this document are intended to provide explanations of how electrical systems operate.



Requirements for repeated grounding of incoming distribution boxes



System Grounding

Abstract: System grounding considerations affect many aspects of an electrical system. Knowledge of the various types of system grounding and performance characteristics is critical when designing or

Transmission Line Grounding Guide

Paragraph 96; Ground Resistance Requirements: "Grounding systems shall be designed to minimize hazard to personnel and shall have resistances to ground low enough to permit prompt operation of



Does the Distribution Box Door Need Grounding? Safety Standards FAQ

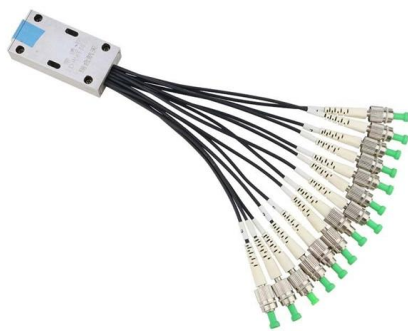
Without grounding, anyone touching it becomes the path to earth--and gets shocked (or worse). NEC 250.148 doesn't play favorites: The code mandates that all metallic parts of electrical boxes must

The Ultimate Guide to Protective Grounding Boxes

Learn about the benefits, types, and importance of protective grounding boxes in ensuring



electrical safety and preventing hazards.

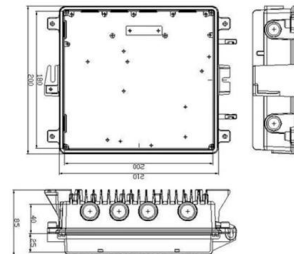


IEEE Recommended Practice for System Grounding of Industrial and

Abstract: Discussed in this recommended practice is the system grounding of industrial and commercial power systems. The recommended practices in this document are intended to provide explanations

GROUNDING OF UTILITY AND INDUSTRIAL DISTRIBUTION

Essentially this workshop is broken down into system grounding, protective grounding and surge/noise protection of power and electronics systems normally found in distribution networks.



DUKE UNIVERSITY CONSTRUCTION STANDARDS 1

Introduction Grounding is utilized within electrical distribution systems to provide an alternative, low- impedance path around the electrical system for short circuit current to flow during a line to ground



3003.1-2019

The basic reasons for grounding or not grounding the electrical system and the various types of system grounding, as well as the practices commonly used to ground electrical systems are



JLC Field Guide: Grounding

JLC Field Guide: Grounding The purpose of grounding is safety: A ground wire generates a short circuit and trips the circuit breaker or fuse when

DISTRIBUTION BOX

Each DISTRIBUTION BOX and controller must be grounded. On the US market, a 5.26 mm² (10 AWG) ground wire must be used, and in all other markets a 6 mm² must be used.



Grounding

1 Design Requirements Extend ground conductors from the ground system to all switchgear, transformers, unit substations, motor controllers, panelboards, control panel ground buses, and



Equipped with a removable **Mounting Plate** inside the enclosure, enabling customized drilling and secure component mounting.

Section 7: Grounding of Distribution Systems

Solid Grounding. The solid grounding system shall be used for automatic clearing of ground faults. Use only on secondary systems or where impedance of transformers is included in the zero sequence



Grounding Methods and Best Practices for High Voltage Transmission

With the rise of new utility projects due to the "electrification of everything" initiative, there is an increasing dependence on utilities for the safe and reliable distribution of power. Routine

Distribution System Grounding , part of Electric Power and Energy

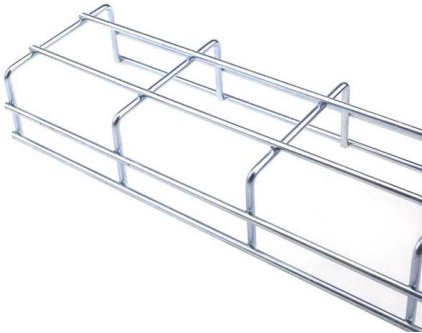
Good system grounding provides the path for normal load and fault currents while maintaining load and controls temporary overvoltages. Good equipment grounding ensures personnel safety. Neutral





GROUNDING AND BONDING FOR ELECTRICAL SYSTEMS

The designer will evaluate the sizing of the grounding system and the need for an isolated or bonding ground system separate from the building grounding system.



Grounding Electrical Distribution Systems , part of Grounding

The first concern and the most important reason for proper grounding techniques are to protect people from the effects of ground-faults and lightning. Creating an effective ground-fault current path to



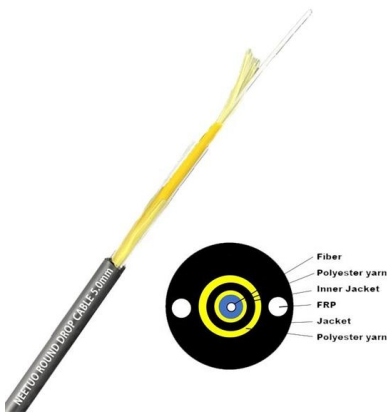
Grounding system construction: key points for grounding distribution

Grounding Distribution Boxes: Where Theory Meets Sweaty Palms The Dirty Secrets of "Quick Fix" Installations Picture this scene: An electrician rushes through a distribution box



The installation requirements for the distribution box

A distribution box is the heart of any electrical system. It takes the incoming power and safely distributes it to different circuits throughout your



GROUNDING OF UTILITY AND INDUSTRIAL DISTRIBUTION

In this workshop, we will demystify the concepts of grounding as applicable to utility networks and industrial plant distribution systems as well as their associated control equipment.

Grounding System Installation Standards for Distribution Boxes and

Whether you're a seasoned pro or just starting out, this comprehensive guide will give you practical insights into proper grounding techniques, with a special focus on how selecting quality materials



The Basics of Grounding and Bonding

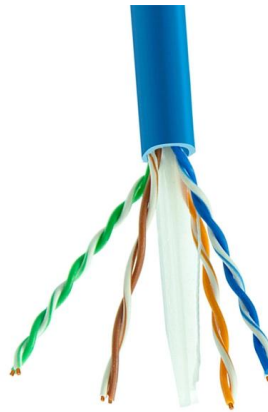
In ungrounded systems, the same actions are required except for electrical system grounding. When these NEC requirements are implemented, an effective ground





Industrial Automation Wiring and Grounding Guidelines

Purpose This publication gives you general guidelines for installing an Allen-Bradley industrial automation system that may include programmable controllers, industrial computers, operator



Electric system ground system inspection

Electrical ground system inspection procedures & checklists. This document discusses procedures the inspection of the grounding system components of a building electrical system when performed by

How to Design System Grounding in Low Voltage Electrical Systems

Quantities that can be calculated are subject to increasing requirements in factories and buildings. Also, the control and monitoring equipment in buildings (electrical power distribution management



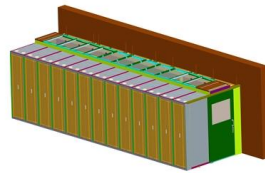
Grounding Practices in Power Distribution Systems

It is absolutely necessary to implement efficient grounding in distribution systems in order to guarantee the safety, dependability, and performance of the electrical



Single & Three Phase Grounding

The grounding of three-phase circuits at the facility of a user of electric power may have a different appearance from that of the utility's grounding practices. In any



Contact Us

For datasheets, pricing, or custom telecom energy solutions, please visit:
<https://koskolong.co.za>