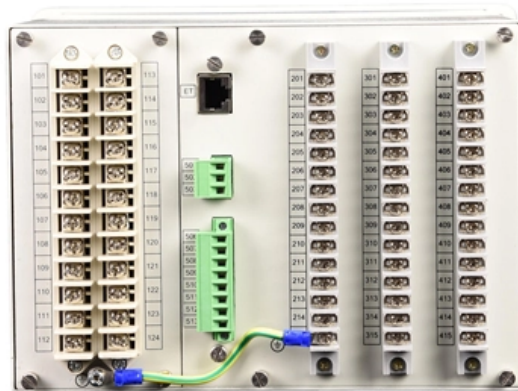




Adam Tas Corridor Energy

Requirements for the installation height of communication towers





Overview

This height increases the mean free airspace between the top of the tower and average bird flight height, even in weather conditions with reduced cloud ceiling; Guy Wires. Building new towers or collocating antennas on existing structures requires compliance with the Commission's rules for environmental review. Telecommunications towers, also known as cell towers or mobile phone masts, are essential for enabling wireless communication services. Pursuant to the OSH Act, employers must comply with safety and health standards and regulations issued and enforced either by OSHA or by an OSHA-approved state plan. In addition, the Act's General Duty Clause, Section 5(a) (1), requires employers to provide their employees with a workplace free.



Requirements for the installation height of communication towers

REINFORCED VIRGIN PVC TRUNKING

Superior Crush Resistance



PUBLIC CONSULTATION ON GUIDELINES FOR THE DEPLOYMENT OF COMMUNICATIONS

Guyed wires must not be over tightened in the installation of guy towers in order to avoid excessive tension which may cause alignment problems, cable rupture and permanent wrapping of tower

FWS Guidelines for Communication Towers_4.9.2018-rfl

Given the height, structural engineering needs (i.e., guy wires), and obstruction lighting requirements, communication towers may cause direct and indirect bird mortality through:



OSHA-2014-0018 Communication Tower Safety Request for Information

Comments module to assist OSHA with RFI

Design Criteria and Installation of Communication Towers

This article is about Design Criteria and Installation of Communication Towers for



telecommunication Engineers, supervisors and technical and reference from International Standards



Communication Tower Safety: Preventing falls and other

Some common communication tower hazards include falls from great heights, electrical hazards, dangers associated with hoisting personnel and equipment

National Communications Authority

"Guyed Tower" "Infrastructure " "LUSPA " ' Monopole "Non-electronic Infrastructure" "Operator/ 'Passive Infrastructure Sharing " ' Roof Mount Towers ' "Self Supporting / Lattice Towers 'Site ' ' Sway "



Telecommunications Mast Installation Guide , PDF

This document outlines technical specifications for the installation of telecommunications masts and towers. It discusses general principles such as



Tower Installation -- CommStructures

Tower Installation: Planning and Preparation
Before starting the tower installation process, our team will carefully plan and prepare for the project. This includes obtaining all



What is a communication tower? Benefits & Installation

Telecommunication towers are the lifelines of telecommunication that exist today in modern societies. They are mega-establishments that help in the relay of wireless

Eurocode Telecom Tower Design: Complete Guide to

It gives clear technical guidelines on structural stability, calculation of loads, and safety requirements of telecom towers. This blog will take a deep look



Communication Towers

In order to erect or maintain communication towers, employees regularly climb towers, using fixed ladders, support structures or step bolts, from 100 feet to heights in excess of 1000 or 2000 feet.

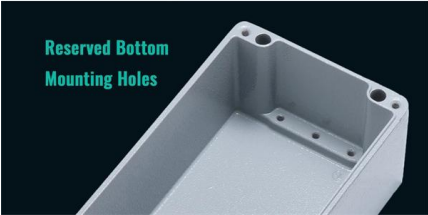


Recommended Best Practices for Communication Tower Design,

Given the height, structural engineering needs (i.e., guy wires), and obstruction lighting requirements, communication towers may cause direct and indirect bird mortality through:



IP65 / IP67 Sealing Design



Reserved Bottom Mounting Holes

What Are the Requirements for a Telecom Tower?

Learn the key requirements for a telecom tower, including zoning regulations, safety approvals, structural standards, and compliance needed for tower construction.

Height and Load-Bearing Capacity: The tower's height must be sufficient to provide adequate coverage for the intended area, and it should be able to support the





Guidelines for the location, siting and design of telecommunications

Design and operation of a telecommunications facility should accord with the licensing requirements of the Australian Communications Authority, with physical isolation and control of public access to

Communication Tower Best Practices

Tower owners should meet or exceed the standards established in recognized consensus standards governing the construction and maintenance of communication towers, including TIA-222-G,



Design Considerations For Height In Angle Steel

When designing the height of an angle steel communication tower, a comprehensive approach is required to balance technical, structural, regulatory,

MTSFB 001-2009

MTSFB 001:2009 Copyright 2009 Malaysian Technical Standards Forum Bhd



A Guide to Understanding Telecom Tower Safety Standards

The installation of a large satellite dish on a tower, as seen with satellite-linked communication towers, adds a significant load. The standards provide guidance on how to account



Telecommunication Tower Reinforced Concrete Foundation

Telecommunication Tower Reinforced Concrete Foundation Telecom (Telecommunications) towers are a generic description of radio masts and towers built primarily to hold telecommunications antennas.



Telecom tower Requirements_R2

Ø The tower shall be designed to withstand the wind load at the designated tower location. Ø Detailed structural drawings, sway and wind load calculations shall be submitted for necessary approval prior





Communication Tower Best Practices

The business structure of the communication tower industry presents additional challenges to ensuring employee safety. When carriers own their own towers and directly employ the employees who build



Tower Foreman

Tower Foreman- Las Vegas, NV Tower Foreman Position Summary: Alamon, Inc., a Montana-based employee-owned company since 1975, provides installation services to the utilities, energy, and

Recommended Best Practices for Communication Tower Design,

For some towers, the FAA can permit an Aircraft Detection Lighting System (ADLS), which maintains a communication tower of any height to be unlit until the ADLS radars detect nearby aircraft, at which



Contact Us

For datasheets, pricing, or custom telecom energy solutions, please visit:
<https://koskolong.co.za>