



Adam Tas Corridor Energy

SAN switch fiber optic network card





SAN switch fiber optic network card



SAN Fundamentals: How Fibre Channel SANs Are Built, Secured

What Is a Storage Area Network? Within this document, the term Storage Area Network (SAN) is used to describe a Fibre Channel network over which SCSI-FCP (SCSI over Fibre Channel) protocols run.

What is Fiber Channel Switching?

Fiber Channel Switching: Using intelligent switches to direct and manage data traffic via fiber channels. Fibre Channel: This is a different spelling



What is a Fibre Channel switch? , Definition from

A Fibre Channel (FC) switch is a networking device that's compatible with the FC protocol and designed for use in a dedicated storage area network

Fibre Channel Switch , SAN FC Switches , Lenovo US

Fibre Channel adapters, or "Fibre Channel host bus adapters" (HBAs), physically connect servers



to your Fibre network switch and SAN. Similar to



CCNA - What is a SAN?

A fiber-optic cable at one end connects to the server's HBA and the other end connects to the SAN switch. By using SAN switches all devices connected can



Fibre Channel

The Fibre Channel SAN connects servers to storage via Fibre Channel switches. The goal of Fibre Channel is to create a storage area network (SAN) to connect



What is Fibre Channel SAN and How Does It Work?

Fibre Channel Storage Area Network (SAN) is a high-speed network technology that provides reliable and efficient connectivity between servers and





Using ESXi with Fibre Channel SAN

ESXi supports Fibre Channel (FC), a storage protocol that the SAN uses to transfer data traffic from hosts to shared storage. This section provides introductory information about how to use ESXi with

- ✓ Slow Axis Aligned (0°) - for standard sensing applications
- ✓ Fast Axis Aligned (90°) - for special modulation applications
- ✓ 45° Axis Aligned - for depolarizer applications



What is a SAN Switch? How It Works and Compares to

Learn how a Fibre Channel or Ethernet SAN switch connects servers and shared pools of storage devices and directs the movement of storage traffic.

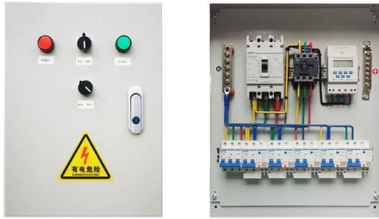
Fibre Channel Switch , SAN FC Switches , Lenovo US

Fibre network switches use fibre optic cables to connect to storage devices, physical servers and other devices within your SAN or LAN. You can



Details of the differences between fiber-optic network

These two methods need to be heavy on the data block package unpacking operation, so the high-performance SAN system is the need to install a



Cisco Storage Area Networking Solutions

Discover how smarter storage from Cisco Storage Area Networking helps keep your data secure, accessible, and always available.



Fiber Optical Switch: Definition and Operation

A fiber optical switch, also known as a fiber channel switch or a SAN (Storage Area Network) switch, is a high-speed network transmission relay



Storage Area Networks (SAN) Solutions , IBM

A next-generation switch for high-speed Fibre Channel connectivity from the server rack to the SAN core. A unique port expansion module provides a flexible, cost-effective port upgrade option.





Application Of 8G SFP+ FC Optical Module In SAN

Next, ETU-LINK will introduce how to use 8G SFP+ FC optical modules to build a SAN storage network. The composition of a SAN network is mainly composed of

SAN Interconnect Components

Fibre Channel switches are an essential component in storage networking for connecting servers and storage devices in a Storage Area



The difference between fiber network card and HBA

FC network card: also commonly called fiber channel network card, stand for Fiber Channel HBA. The transmission protocol is a Fibre Channel

MDS 9124V 64-Gbps 24-Port Fibre Channel Switch Data Sheet

Cisco MDS 9124V 64-Gbps 24-Port Fibre Channel switch brings the latest high-performance, low-latency Fibre Channel Storage Area Network (SAN) technology to market. Along



Reliable, scalable and affordable FC SAN storage

By installing a Fibre Channel card in your QNAP NAS, you can easily add the NAS to an existing SAN environment at an affordable price point. Common Fibre



Modernize your SAN with Cisco MDS 64G Fibre Channel

To learn more, visit [64G Fibre Channel Done Right](#) Unlock the full value of your Storage Area Networking solution Cisco MDS 9000 series switches simplify



Chapter 2: Understanding How a SAN Works , GlobalSpec

In the context of a storage area network (SAN), the fabric typically refers to the detailed makeup of the network, such as cards and attached devices. The most common SAN fabrics include Fibre Channel



What is a storage area network (SAN)?

A storage area network (SAN) is a dedicated high-speed network that makes storage devices accessible to servers by attaching storage directly to an operating

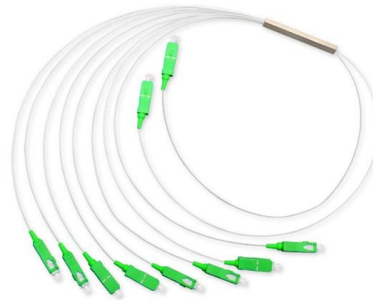


Understanding Fibre Channel , Junos OS , Juniper Networks

An FC fabric is a switched network topology that interconnects FC devices using FC switches, usually to create a SAN. An FC switch is a Layer 3 network switch that is compatible with the FC protocol,

Reliable, scalable and affordable FC SAN storage

By using a QNAP NAS with Fibre Channel connectivity, your NAS can be easily added to your existing SAN environment at an affordable price point. This allows



Fiber Channel SFP: A Complete Guide for Storage Networks

Learn what a Fiber Channel SFP is, how it works, common FC SFP types, speeds, and how to choose the right one for SAN and storage networks.



Cisco Nexus 9000 Series NX-OS SAN Switching

Configure SAN port Channel using Fibre Channel ports from different port groups. Ensure that one SAN port channel is not connected to different sets



QNAP Fibre Channel Expansion Card , QNAPWorks

Common Fibre Channel SAN (Storage Area Networks) are closed network environments, and their devices are often expensive while lacking deployment



Contact Us

For datasheets, pricing, or custom telecom energy solutions, please visit:
<https://koskolong.co.za>