



**Adam Tas Corridor Energy**

# **Safety markings for circuit breakers in distribution boxes**





## Overview

---

22, every circuit breaker and switch must be clearly labeled to indicate its purpose (e. , "Main Disconnect," "AC Unit," or "Lighting - Floor 2"). Yet, one of the most overlooked steps in electrical safety and convenience is correctly labeling each circuit breaker. Effective industrial electrical panel identification helps workers identify critical circuit information, understand safety risks, and quickly find components and locations for servicing and safe operations.



## Safety markings for circuit breakers in distribution boxes

---



### How to Read a Breaker Box and Understand the Labels

The essential guide to reading your breaker box. Understand safety protocols, interpret circuit labels, and manage your home's power system.

### The Complete Guide to Electrical Panel Labeling:

It's not just recommended--it's required by electrical codes nationwide. What Is Electrical Panel Labeling? Electrical panel labeling refers to



### Electrical Panel Labeling Standards: Easy Guide

When designing your labels, ensure the labels identify the circuit or equipment

### Distribution Boards

Distribution boards, often referred to as electrical panels or breaker boxes, serve as the nerve center of any electrical system. Here we explore



the crucial parts of a distribution board and gain insights into



### What are the Requirements for Labeling Circuit Breakers?

When thinking about labeling circuit breakers, most people assume that the only reason to do it is to make sure you can tell what breakers go to what part of the facility. The reality is, however, that there



### Distribution Box Guide: Types, Components & Solutions

It ensures that circuits are safe, organized, and easy to manage. A properly installed electrical distribution box is important for safety. It also allows



### Comprehensive Handbook for Circuit Breaker Labels

Unlock Electrical Safety: Explore Our Essential Guide To Circuit Breaker Labels And Master The Art Of Decoding Circuit Breaker Labels Without





## Decoding the Breaker Box Schematic: A

Learn about the breaker box schematic and how it is used to diagram the electrical connections and components in a circuit breaker panel.

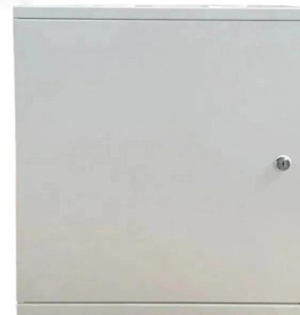


## Size configuration of multiple circuit breakers in the

Choose the right size and setup for multiple circuit breakers in your distribution box to ensure safety, code compliance, and room for future upgrades.

## The Complete Guide to Distribution Box: Installation, Types & More

Regular testing helps identify failing breakers before they compromise safety. How do I choose the right size distribution box? Size selection depends on the number of circuits needed,



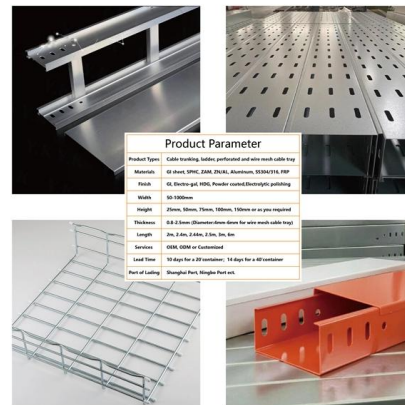
## The Complete Guide to Electrical Panel Labeling: Safety, Code

Electrical panel labeling refers to the systematic identification of each circuit breaker or fuse in your electrical distribution panel with clear, descriptive text that indicates what electrical loads



## Re: Marking of Electrical Equipment

Electrical Equipment Did You Know? Proper labelling at all distribution points, circuit breakers, fuses and switches is required during installation, as well as whenever .



## Electrical Panel Labeling: Clear & Simple Compliance

Learn electrical panel labeling standards, requirements & best ways to label an electrical panel for safety, compliance, and easy identification.



## How To Read a Circuit Breaker Panel

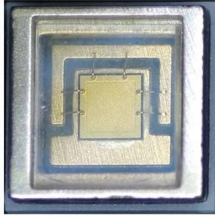
Learn how to read a circuit breaker panel and decode the labeling to understand the functions of each component in a circuit breaker panel.





## Complete Guide For Distribution Boxes Types

These boxes house various circuit breakers, protective devices, and sometimes meters, which collectively manage and distribute electricity to different circuits



## How to Read a Breaker Box: A Beginner's Guide to Electrical Safety

How to Read a Breaker Box? To read a breaker box, start by locating the main breaker, which controls electricity distribution to the building and is typically at the top or bottom of the panel.



## Molded Case Circuit Breaker - Marking and Application

A guide to the certification, listing, and classification of molded case circuit breakers. Includes sample marks, ratings, and special markings.



## Distribution Boxes: Types and Functions

A distribution boxes acts as the load center and main distributor of electrical power within a building. Also called a distribution board, panel board,





## OSHA Training Toolbox Talk: Basic Electrical Safety [Reference 1910

So the first order of business is for us all to take a look at all of the electrical disconnecting means, breakers, and similar devices in our work areas to make sure that all of them that should be marked

## Electrical Equipment Labeling: Safety Guide , Highland

Properly labeling electrical equipment such as circuit breakers, switches, junction boxes, and machines helps ensure safety and efficient operation.



## Electrical Panel Clearance And Marking Requirements

Key requirements include: Identification of Purpose: Under NEC 110.22, every circuit breaker and switch must be clearly labeled to indicate its purpose (e.g., "Main Disconnect," "AC Unit," or "Lighting -

## What are the Requirements for Labeling Circuit Breakers?

For safety and OSHA compliance, it's important that your panels are easy to find and clearly labeled. This instructive guide gives you tips and tricks for smart and safe panel labeling.



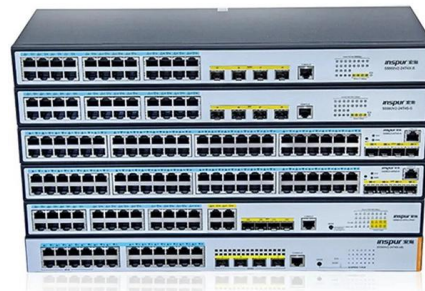
## Breaker Box Labeling: Step-by-Step Safety & Efficiency

Master breaker box labeling for safer electrical systems. Follow our expert step-by-step guide for efficient troubleshooting and maintenance.



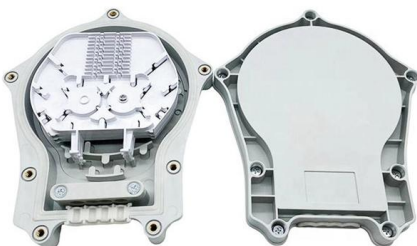
## How to Read and Interpret Your Distribution Box Labels

Understand your distribution box labels to identify circuits, improve safety, and troubleshoot electrical issues in your home with confidence.



## A Definitive Guide To Distribution Boxes

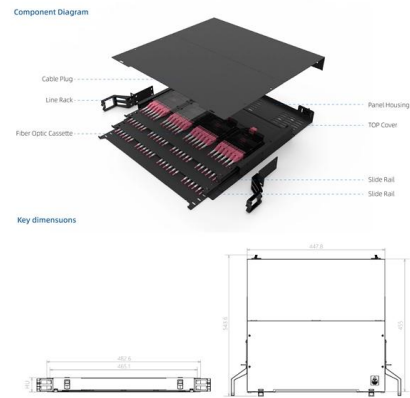
The distribution box acts as the center of power distribution, distributing electricity to all connected devices. A distribution box, also known as a distribution board, panel board, breaker





## How to Label a Circuit Breaker

Learn how to properly label circuit breakers for safety and efficiency. Follow our step-by-step guide to create clear, descriptive labels that make it easy



## Contact Us

---

For datasheets, pricing, or custom telecom energy solutions, please visit:  
<https://koskolong.co.za>